

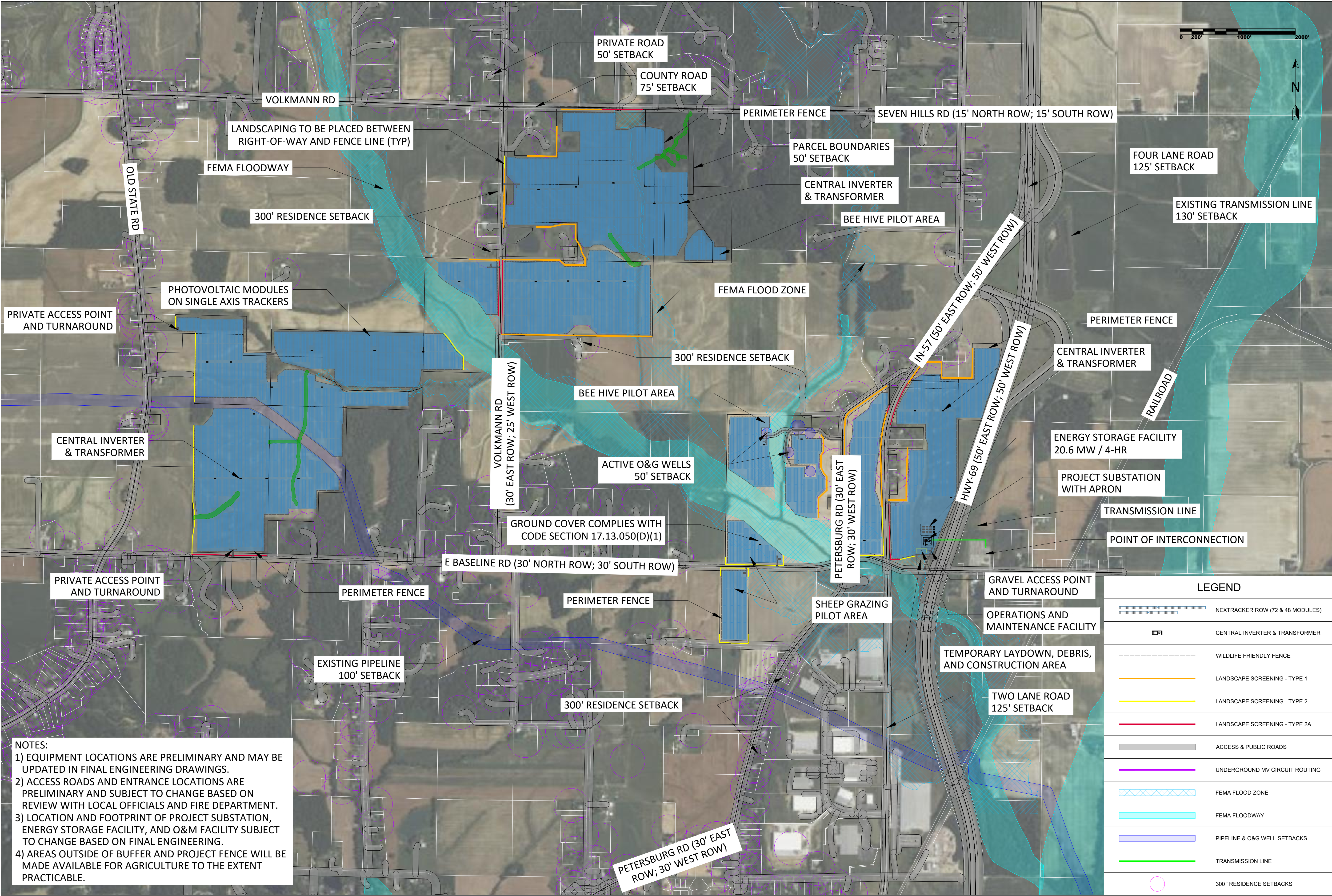
REPRODUCTION, DISCLOSURE, OR USE WITHOUT SPECIFIC WRITTEN AUTHORIZATION IS STRICTLY FORBIDDEN

PROJECT NUMBER:
IN-2022-XXXX

SHEET TITLE:
SITE PLAN
NOT FOR CONSTRUCTION

BLUEGRASS CREEK SOLAR SPECIAL USE AREA AND PARCELS VANDERBURGH COUNTY, IN			
#	REVISION	DATE	ID
1.1	SITE PLAN - APC REVIEW (V1.1)	5/27/2025	RE
1.2	UPDATED SITE PLAN ANNOTATIONS, DETAILS (V1.2)	6/2/2025	RE
1.3	UPDATED SITE PLAN EXCLUSIONS, ANNOTATIONS, DETAILS (V1.3)	6/16/2025	RE

PROJECT DETAILS	
LATITUDE	38.122627
LONGITUDE	-87.475851
INTERCON. VOLTAGE	69 KV
LEASED AREA	878.1 ACRES
FENCED AREA	604.0 ACRES
FENCE LENGTH	88,408 LF
WIND LOAD	105 MPH ASCE 7-10
SNOW LOAD	15 PSF ASCE 7-10
DC CAPACITY	153,581.4 KW
AC CAPACITY	100,000.0 KW
DC:AC RATIO	1.536
STRUCTURE	NEXTRACKER (72 & 48 MODS/ROW)
TRACKER ROWS	(2,989 X 72); (894 X 48)
AZIMUTH	180 DEGREES
GCR	40.0%
MODULE	Q.PEAK DUO XL-G11
MODULE CAPACITY	595W
MODULE QUANTITY	258,120
STRING SIZE	24
INVERTER	SUNGROW SG4400UD-MV-US
INVERTER CAPACITY	4,400 KVA @ 40C
INVERTER QUANTITY	28



NOTES:
1) EQUIPMENT LOCATIONS ARE PRELIMINARY AND MAY BE UPDATED IN FINAL ENGINEERING DRAWINGS.
2) ACCESS ROADS AND ENTRANCE LOCATIONS ARE PRELIMINARY AND SUBJECT TO CHANGE BASED ON REVIEW WITH LOCAL OFFICIALS AND FIRE DEPARTMENT.
3) LOCATION AND FOOTPRINT OF PROJECT SUBSTATION, ENERGY STORAGE FACILITY, AND O&M FACILITY SUBJECT TO CHANGE BASED ON FINAL ENGINEERING.
4) AREAS OUTSIDE OF BUFFER AND PROJECT FENCE WILL BE MADE AVAILABLE FOR AGRICULTURE TO THE EXTENT PRACTICABLE.



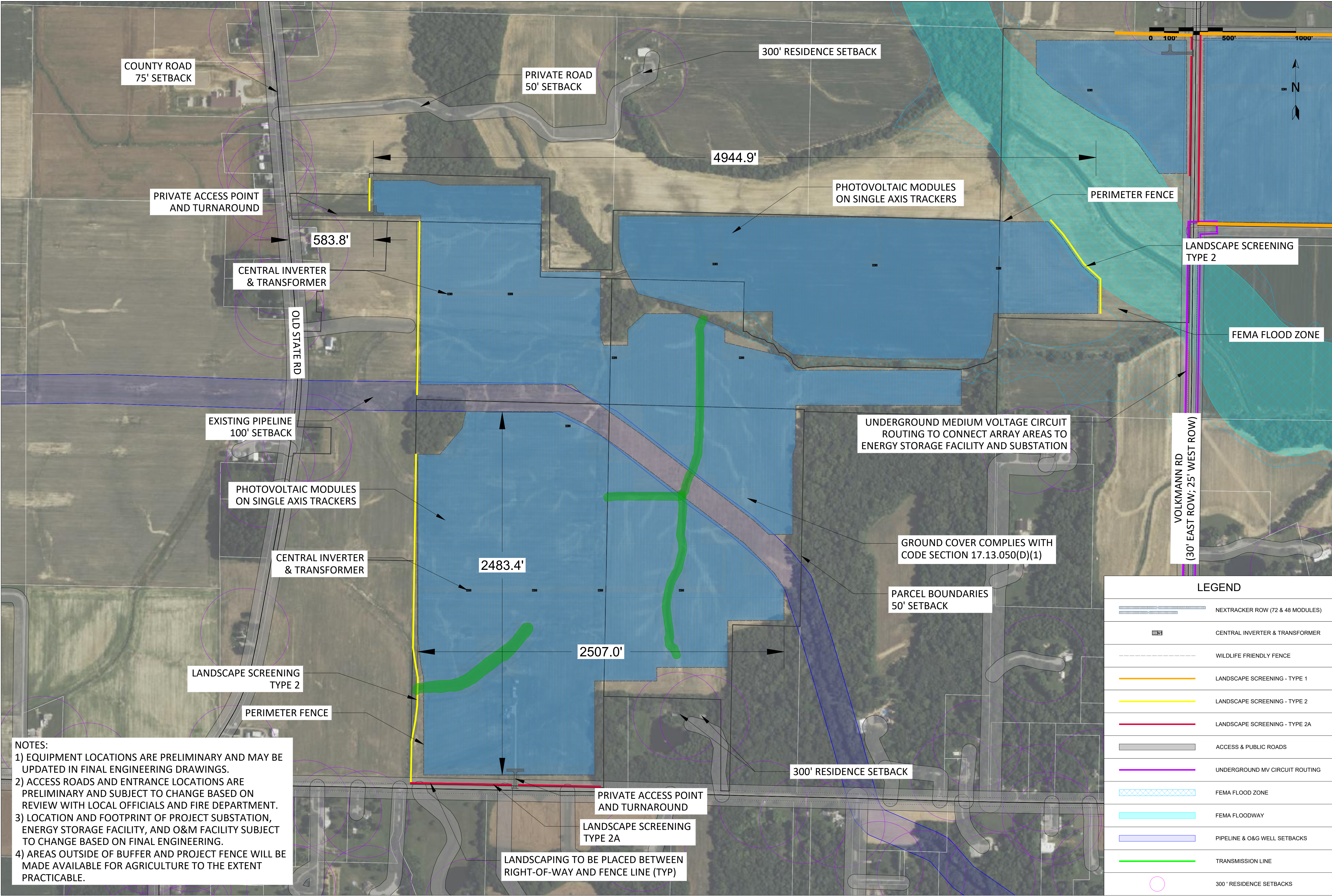
REPRODUCTION, DISCLOSURE, OR USE WITHOUT SPECIFIC WRITTEN AUTHORIZATION IS STRICTLY FORBIDDEN

PROJECT NUMBER:
IN-2022-XXXX

SHEET TITLE:
SITE PLAN
NOT FOR CONSTRUCTION

		REVISION			
		#	DATE	ID	RE
BLUEGRASS CREEK SOLAR COMPLETE SITE PLAN AND FACILITIES VANDERBURGH COUNTY, IN		1.1	5/27/2025	RE	
		1.2	6/27/2025	RE	
		1.3	6/16/2025	RE	

PROJECT DETAILS	
LATITUDE	38.122627
LONGITUDE	-87.475851
INTERCON. VOLTAGE	69 KV
LEASED AREA	878.1 ACRES
FENCED AREA	604.0 ACRES
FENCE LENGTH	88,408 LF
WIND LOAD	105 MPH ASCE 7-10
SNOW LOAD	15 PSF ASCE 7-10
DC CAPACITY	153,581.4 KW
AC CAPACITY	100,000.0 KW
DC:AC RATIO	1.536
STRUCTURE	NEXTRACKER (72 & 48 MODS/ROW)
TRACKER ROWS	(2,989 X 72); (894 X 48)
AZIMUTH	180 DEGREES
GCR	40.0%
MODULE	Q.PEAK DUO XL-G11
MODULE CAPACITY	595W
MODULE QUANTITY	258,120
STRING SIZE	24
INVERTER	SUNGROW SG4400UD-MV-US
INVERTER CAPACITY	4,400 KVA @ 40C
INVERTER QUANTITY	28



REPRODUCTION, DISCLOSURE, OR USE WITHOUT SPECIFIC WRITTEN AUTHORIZATION IS STRICTLY FORBIDDEN

PROJECT NUMBER:
IN-2022-XXXX

SHEET TITLE:
SITE PLAN - WEST
NOT FOR CONSTRUCTION

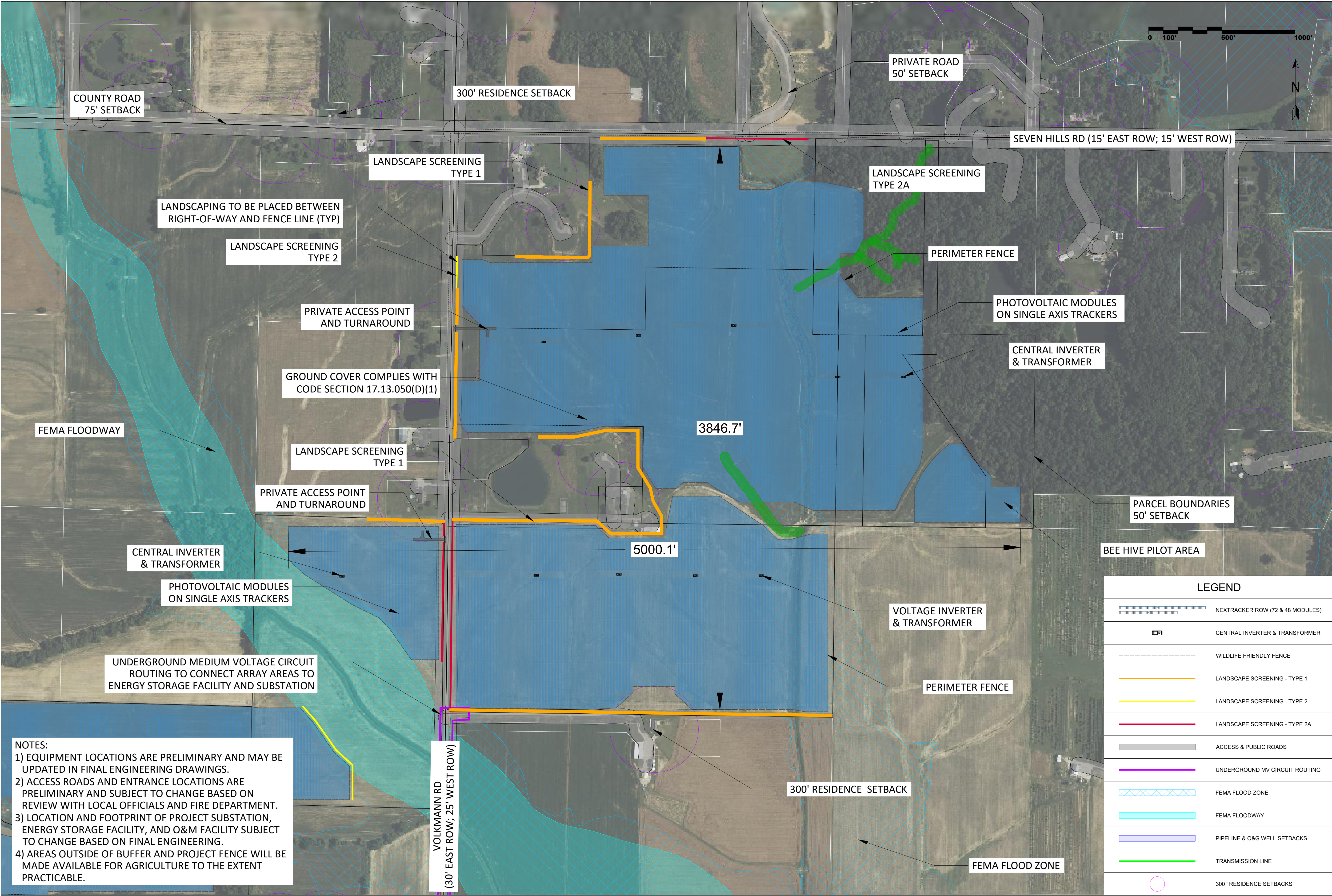
BLUEGRASS CREEK SOLAR SITE PLAN (WEST SIDE) VANDERBURGH COUNTY, IN				#	REVISION	DATE	ID
				1.1	SITE PLAN - APC REVIEW (V1.1)	5/27/2025	RE
				1.2	UPDATED SITE PLAN ANNOTATIONS, DETAILS (V1.2)	6/2/2025	RE
				1.3	UPDATED SITE PLAN EXCLUSIONS, ANNOTATIONS, DETAILS (V1.3)	6/16/2025	RE

PROJECT DETAILS

LATITUDE	38.122627
LONGITUDE	-87.475851
INTERCON. VOLTAGE	69 KV
LEASED AREA	878.1 ACRES
FENCED AREA	604.0 ACRES
FENCE LENGTH	88,408 LF
WIND LOAD	105 MPH ASCE 7-10
SNOW LOAD	15 PSF ASCE 7-10
DC CAPACITY	153,581.4 KW
AC CAPACITY	100,000.0 KW
DC:AC RATIO	1.536
STRUCTURE	NEXTRACKER (72 & 48 MODS/ROW)
TRACKER ROWS	(2,989 X 72); (894 X 48)
AZIMUTH	180 DEGREES
GCR	40.0%
MODULE	Q.PEAK DUO XL-G11
MODULE CAPACITY	595W
MODULE QUANTITY	258,120
STRING SIZE	24
INVERTER	SUNGROW SG4400UD-MV-US
INVERTER CAPACITY	4,400 KVA @ 40C
INVERTER QUANTITY	28

NOTES:
1) EQUIPMENT LOCATIONS ARE PRELIMINARY AND MAY BE UPDATED IN FINAL ENGINEERING DRAWINGS.
2) ACCESS ROADS AND ENTRANCE LOCATIONS ARE PRELIMINARY AND SUBJECT TO CHANGE BASED ON REVIEW WITH LOCAL OFFICIALS AND FIRE DEPARTMENT.
3) LOCATION AND FOOTPRINT OF PROJECT SUBSTATION, ENERGY STORAGE FACILITY, AND O&M FACILITY SUBJECT TO CHANGE BASED ON FINAL ENGINEERING.
4) AREAS OUTSIDE OF BUFFER AND PROJECT FENCE WILL BE MADE AVAILABLE FOR AGRICULTURE TO THE EXTENT PRACTICABLE.

LEGEND	
	NEXTRACKER ROW (72 & 48 MODULES)
	CENTRAL INVERTER & TRANSFORMER
	WILDLIFE FRIENDLY FENCE
	LANDSCAPE SCREENING - TYPE 1
	LANDSCAPE SCREENING - TYPE 2
	LANDSCAPE SCREENING - TYPE 2A
	ACCESS & PUBLIC ROADS
	UNDERGROUND MV CIRCUIT ROUTING
	FEMA FLOOD ZONE
	FEMA FLOODWAY
	PIPELINE & O&G WELL SETBACKS
	TRANSMISSION LINE
	300' RESIDENCE SETBACKS



REPRODUCTION, DISCLOSURE, OR USE WITHOUT SPECIFIC WRITTEN AUTHORIZATION IS STRICTLY FORBIDDEN

PROJECT NUMBER:
IN-2022-XXXX

SHEET TITLE:
SITE PLAN - NORTH
NOT FOR CONSTRUCTION

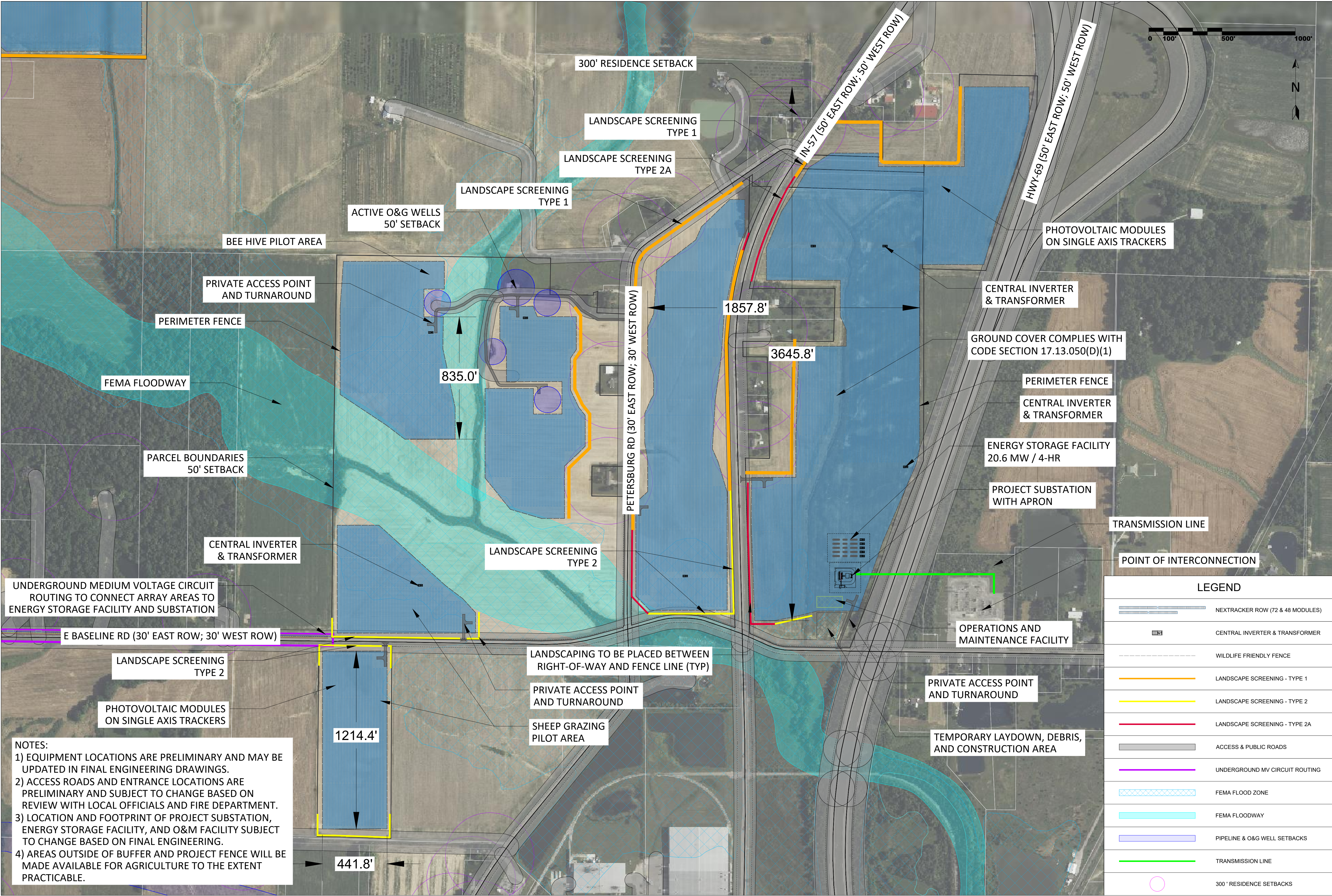
BLUEGRASS CREEK SOLAR SITE PLAN (NORTH SIDE) VANDERBURGH COUNTY, IN				#	REVISION	DATE	ID
				1.1	SITE PLAN - APC REVIEW (V1.1)	5/27/2025	RE
				1.2	UPDATED SITE PLAN ANNOTATIONS, DETAILS (V1.2)	6/2/2025	RE
				1.3	UPDATED SITE PLAN EXCLUSIONS, ANNOTATIONS, DETAILS (V1.3)	6/16/2025	RE

PROJECT DETAILS

LATITUDE	38.122627
LONGITUDE	-87.475851
INTERCON. VOLTAGE	69 KV
LEASED AREA	878.1 ACRES
FENCED AREA	604.0 ACRES
FENCE LENGTH	88,408 LF
WIND LOAD	105 MPH ASCE 7-10
SNOW LOAD	15 PSF ASCE 7-10
DC CAPACITY	153,581.4 KW
AC CAPACITY	100,000.0 KW
DC:AC RATIO	1.536
STRUCTURE	NEXTRACKER (72 & 48 MODS/ROW)
TRACKER ROWS	(2,989 X 72); (894 X 48)
AZIMUTH	180 DEGREES
GCR	40.0%
MODULE	Q.PEAK DUO XL-G11
MODULE CAPACITY	595W
MODULE QUANTITY	258,120
STRING SIZE	24
INVERTER	SUNGROW SG4400UD-MV-US
INVERTER CAPACITY	4,400 KVA @ 40C
INVERTER QUANTITY	28

LEGEND	
	NEXTRACKER ROW (72 & 48 MODULES)
	CENTRAL INVERTER & TRANSFORMER
	WILDLIFE FRIENDLY FENCE
	LANDSCAPE SCREENING - TYPE 1
	LANDSCAPE SCREENING - TYPE 2
	LANDSCAPE SCREENING - TYPE 2A
	ACCESS & PUBLIC ROADS
	UNDERGROUND MV CIRCUIT ROUTING
	FEMA FLOOD ZONE
	FEMA FLOODWAY
	PIPELINE & O&G WELL SETBACKS
	TRANSMISSION LINE
	300' RESIDENCE SETBACKS

NOTES:
1) EQUIPMENT LOCATIONS ARE PRELIMINARY AND MAY BE UPDATED IN FINAL ENGINEERING DRAWINGS.
2) ACCESS ROADS AND ENTRANCE LOCATIONS ARE PRELIMINARY AND SUBJECT TO CHANGE BASED ON REVIEW WITH LOCAL OFFICIALS AND FIRE DEPARTMENT.
3) LOCATION AND FOOTPRINT OF PROJECT SUBSTATION, ENERGY STORAGE FACILITY, AND O&M FACILITY SUBJECT TO CHANGE BASED ON FINAL ENGINEERING.
4) AREAS OUTSIDE OF BUFFER AND PROJECT FENCE WILL BE MADE AVAILABLE FOR AGRICULTURE TO THE EXTENT PRACTICABLE.



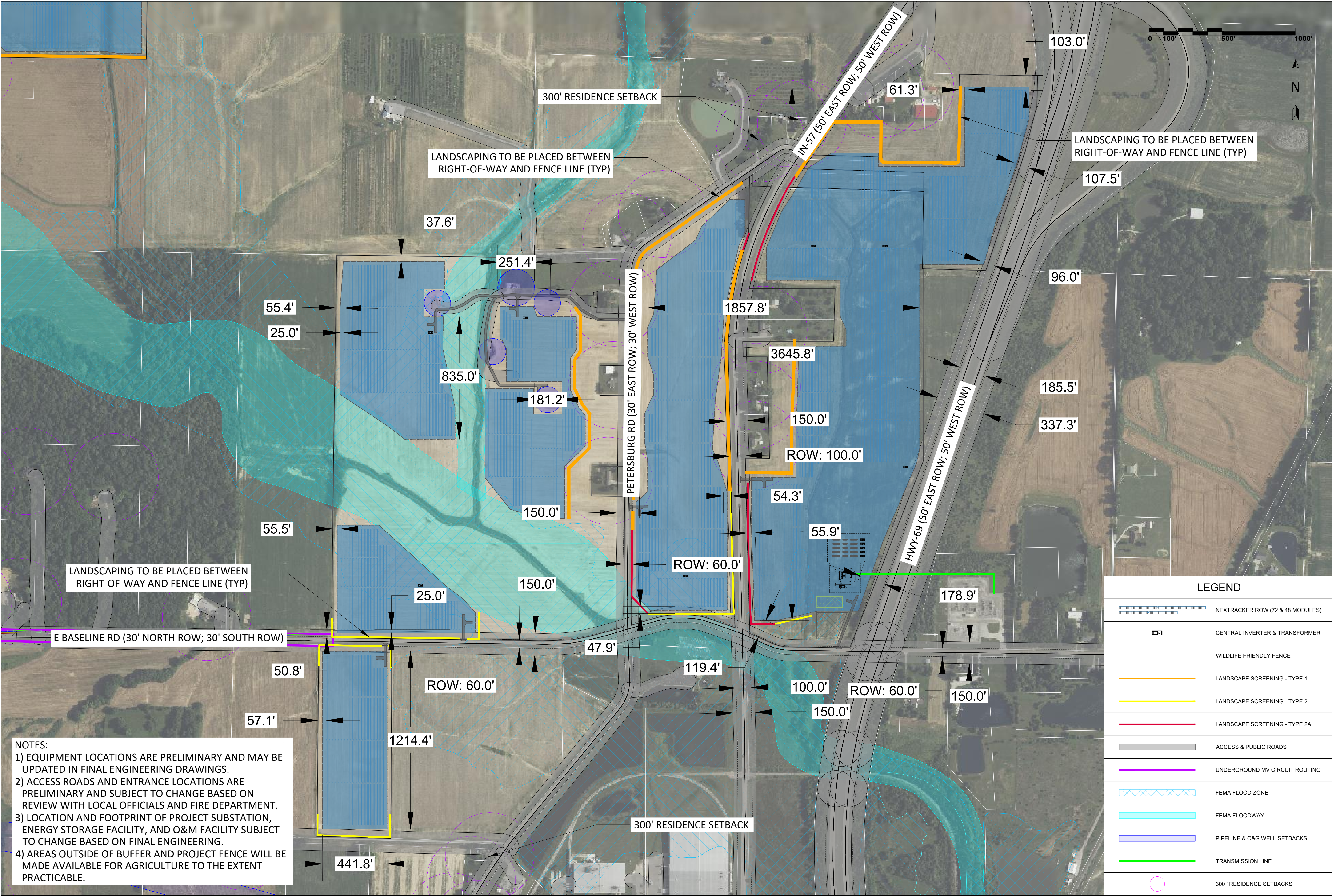
REPRODUCTION, DISCLOSURE, OR USE WITHOUT SPECIFIC WRITTEN AUTHORIZATION IS STRICTLY FORBIDDEN

PROJECT NUMBER:
IN-2022-XXXX

SHEET TITLE:
SITE PLAN - EAST
NOT FOR CONSTRUCTION

BLUEGRASS CREEK SOLAR SITE PLAN (EAST SIDE) VANDERBURGH COUNTY, IN		ID	
		DATE	RE
		5/27/2025	RE
		6/27/2025	RE
		REVISION	
		#	
		1.1	SITE PLAN - APC REVIEW (V1.1)
		1.2	UPDATED SITE PLAN ANNOTATIONS, DETAILS (V1.2)
		1.3	UPDATED SITE PLAN EXCLUSIONS, ANNOTATIONS, DETAILS (V1.3)

PROJECT DETAILS	
LATITUDE	38.122627
LONGITUDE	-87.475851
INTERCON. VOLTAGE	69 KV
LEASED AREA	878.1 ACRES
FENCED AREA	604.0 ACRES
FENCE LENGTH	88,408 LF
WIND LOAD	105 MPH ASCE 7-10
SNOW LOAD	15 PSF ASCE 7-10
DC CAPACITY	153,581.4 KW
AC CAPACITY	100,000.0 KW
DC:AC RATIO	1.536
STRUCTURE	NEXTRACKER (72 & 48 MODS/ROW)
TRACKER ROWS	(2,989 X 72); (894 X 48)
AZIMUTH	180 DEGREES
GCR	40.0%
MODULE	Q.PEAK DUO XL-G11
MODULE CAPACITY	595W
MODULE QUANTITY	258,120
STRING SIZE	24
INVERTER	SUNGROW SG4400UD-MV-US
INVERTER CAPACITY	4,400 KVA @ 40C
INVERTER QUANTITY	28



REPRODUCTION, DISCLOSURE, OR USE WITHOUT SPECIFIC WRITTEN AUTHORIZATION IS STRICTLY FORBIDDEN

PROJECT NUMBER:
IN-2022-XXXX

SHEET TITLE:
SITE PLAN - EAST
NOT FOR CONSTRUCTION

BLUEGRASS CREEK SOLAR EXEMPLARY DIMENSIONED SITE PLAN (EAST SIDE) VANDERBURGH COUNTY, IN				#	REVISION	DATE	ID
				1.1	SITE PLAN - APC REVIEW (V1.1)	5/27/2025	RE
				1.2	UPDATED SITE PLAN ANNOTATIONS, DETAILS (V1.2)	6/2/2025	RE
				1.3	UPDATED SITE PLAN EXCLUSIONS, ANNOTATIONS, DETAILS (V1.3)	6/16/2025	RE

PROJECT DETAILS

LATITUDE	38.122627
LONGITUDE	-87.475851
INTERCON. VOLTAGE	69 KV
LEASED AREA	878.1 ACRES
FENCED AREA	604.0 ACRES
FENCE LENGTH	88,408 LF
WIND LOAD	105 MPH ASCE 7-10
SNOW LOAD	15 PSF ASCE 7-10
DC CAPACITY	153,581.4 KW
AC CAPACITY	100,000.0 KW
DC:AC RATIO	1.536
STRUCTURE	NEXTRACKER (72 & 48 MODS/ROW)
TRACKER ROWS	(2,989 X 72); (894 X 48)
AZIMUTH	180 DEGREES
GCR	40.0%
MODULE	Q.PEAK DUO XL-G11
MODULE CAPACITY	595W
MODULE QUANTITY	258,120
STRING SIZE	24
INVERTER	SUNGROW SG4400UD-MV-US
INVERTER CAPACITY	4,400 KVA @ 40C
INVERTER QUANTITY	28

LEGEND

	NEXTRACKER ROW (72 & 48 MODULES)
	CENTRAL INVERTER & TRANSFORMER
	WILDLIFE FRIENDLY FENCE
	LANDSCAPE SCREENING - TYPE 1
	LANDSCAPE SCREENING - TYPE 2
	LANDSCAPE SCREENING - TYPE 2A
	ACCESS & PUBLIC ROADS
	UNDERGROUND MV CIRCUIT ROUTING
	FEMA FLOOD ZONE
	FEMA FLOODWAY
	PIPELINE & O&G WELL SETBACKS
	TRANSMISSION LINE
	300' RESIDENCE SETBACKS

NOTES:

- 1) EQUIPMENT LOCATIONS ARE PRELIMINARY AND MAY BE UPDATED IN FINAL ENGINEERING DRAWINGS.
- 2) ACCESS ROADS AND ENTRANCE LOCATIONS ARE PRELIMINARY AND SUBJECT TO CHANGE BASED ON REVIEW WITH LOCAL OFFICIALS AND FIRE DEPARTMENT.
- 3) LOCATION AND FOOTPRINT OF PROJECT SUBSTATION, ENERGY STORAGE FACILITY, AND O&M FACILITY SUBJECT TO CHANGE BASED ON FINAL ENGINEERING.
- 4) AREAS OUTSIDE OF BUFFER AND PROJECT FENCE WILL BE MADE AVAILABLE FOR AGRICULTURE TO THE EXTENT PRACTICABLE.

PERIMETER FENCING AND PRIVATE ACCESS ROAD DETAILS



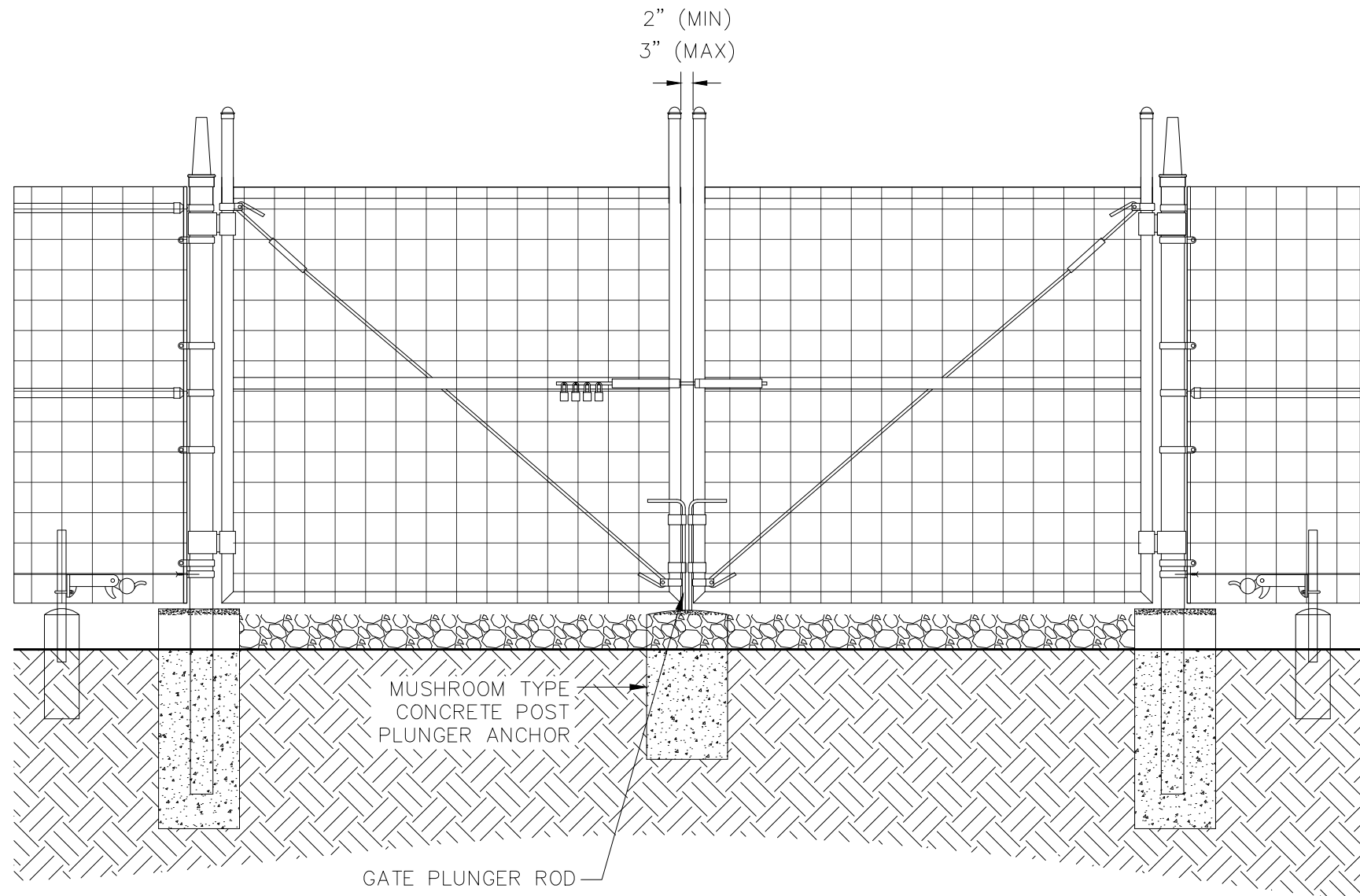
REPRODUCTION, DISCLOSURE, OR USE WITHOUT SPECIFIC WRITTEN AUTHORIZATION IS STRICTLY FORBIDDEN

PROJECT NUMBER:
IN-2022-XXXX

SHEET TITLE:
DETAILS
NOT FOR CONSTRUCTION

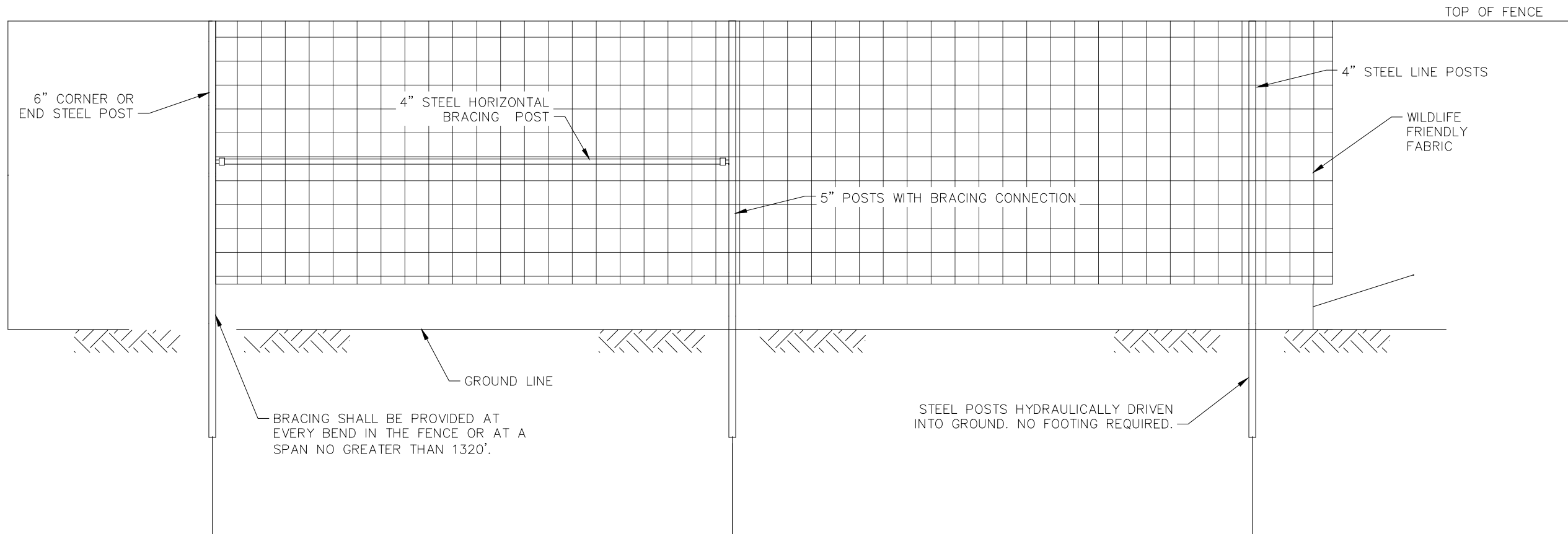
BLUEGRASS CREEK SOLAR
PERIMETER FENCING AND ACCESS ROAD DETAILS
VANDERBURGH COUNTY, IN

#	REVISION		DATE	ID
	DATE	RE		
1.1	5/27/2025	RE	5/27/2025	RE
1.2	6/27/2025	RE	6/27/2025	RE
1.3	6/16/2025	RE	6/16/2025	RE

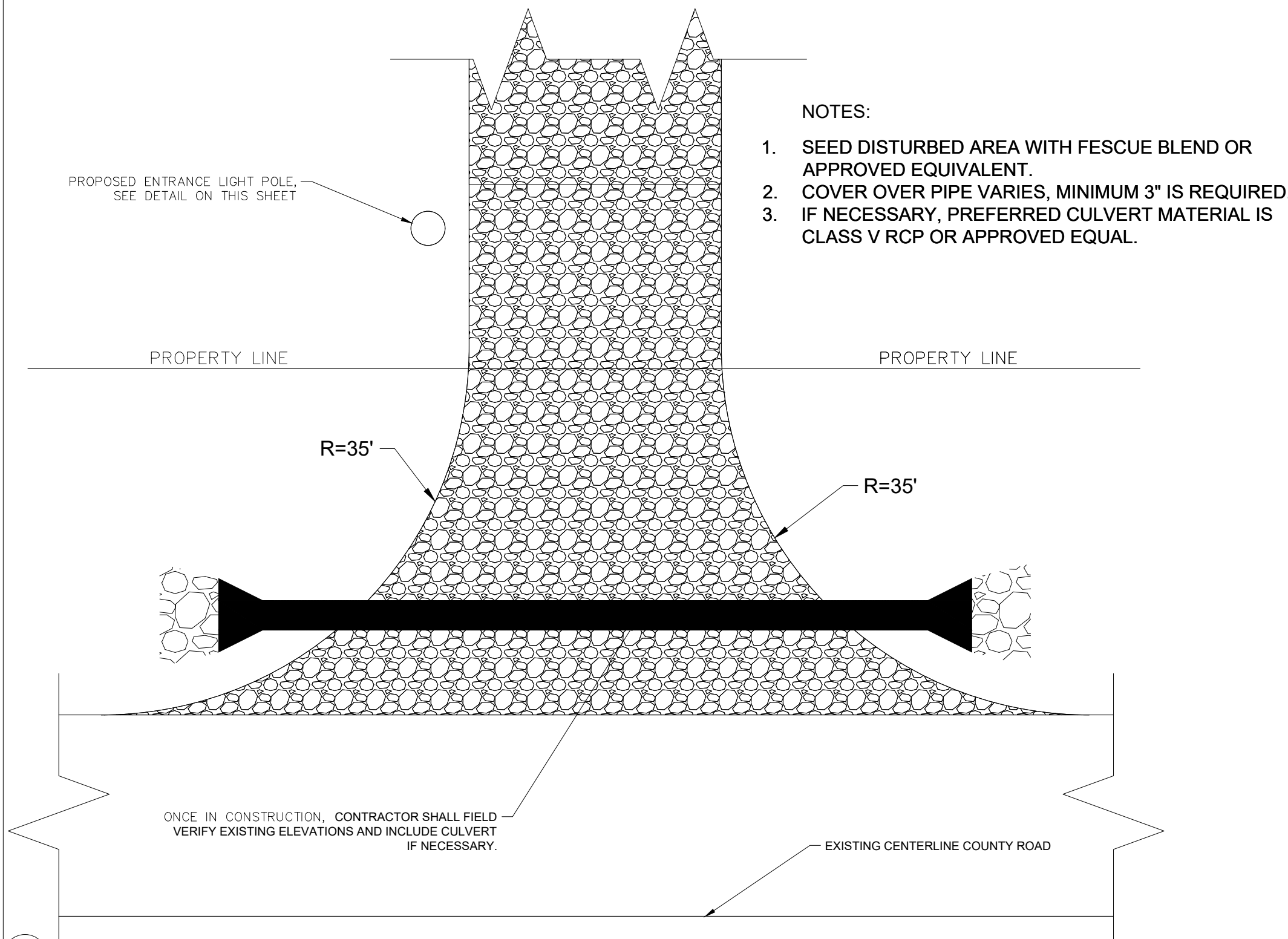


SCALE: NTS

2 WILDLIFE FRIENDLY FENCE DETAIL

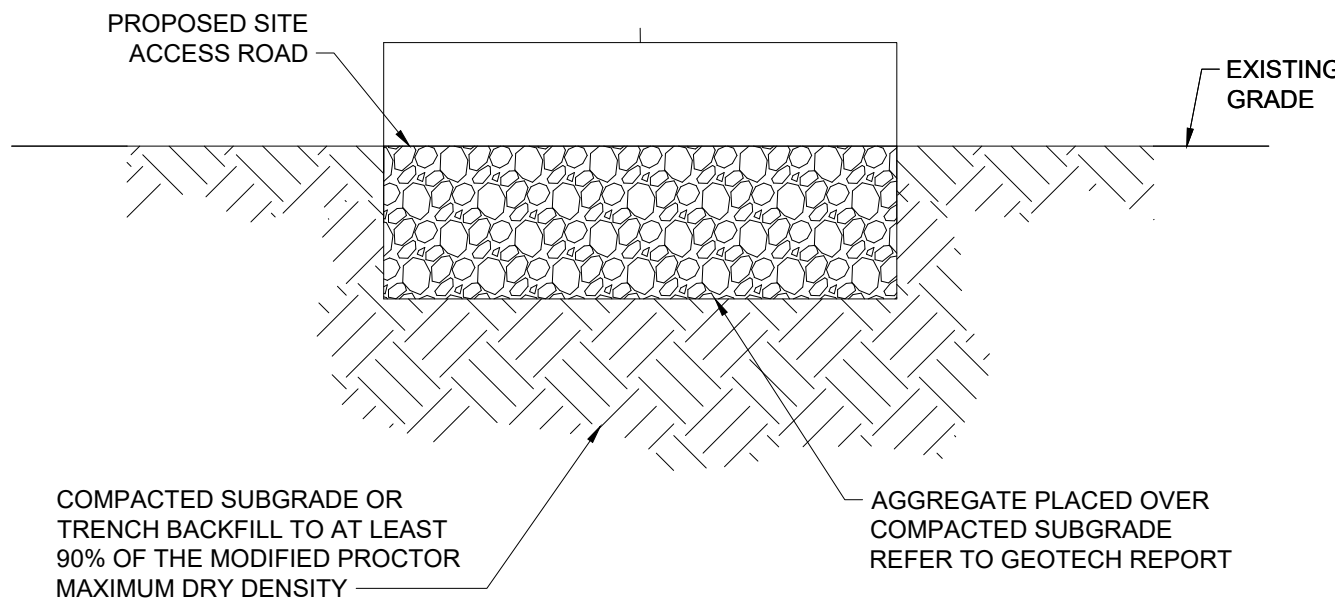


SCALE: NTS



SCALE: NTS

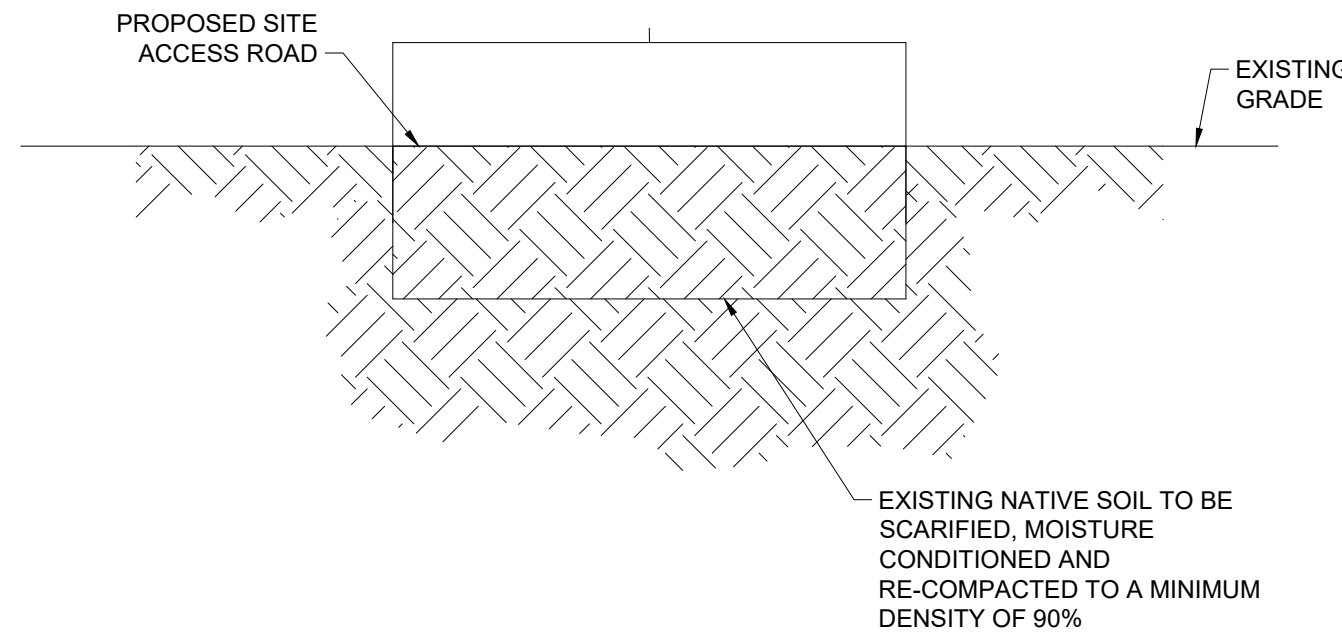
3 TYPICAL ACCESS ROAD ENTRANCE DETAIL



- NOTES:
1. REMOVE ALL GRASSES AND ORGANICS WITHIN ACCESS ROAD AREA.
 2. COMPACTION SHALL BE VERIFIED BY TESTING BY THE GEOTECHNICAL CONSULTANT.
 3. THICKNESS AND SUBGRADE PREP TO BE DETERMINED FROM GEOTECHNICAL REPORT.

SCALE: NTS

4 COMPACTED GRAVEL ROAD SECTION - ACCESS ROAD



- NOTES:
1. REMOVE ALL GRASSES AND ORGANICS WITHIN ACCESS ROAD AREA.
 2. COMPACTION SHALL BE VERIFIED BY TESTING BY THE GEOTECHNICAL CONSULTANT.
 3. THICKNESS AND SUBGRADE PREP TO BE DETERMINED FROM GEOTECHNICAL REPORT.

SCALE: 1"=50'

5 COMPACTED NATIVE ROAD SECTION - ACCESS ROAD

SINGLE AXIS SOLAR TRACKER & CENTRAL INVERTER DETAILS



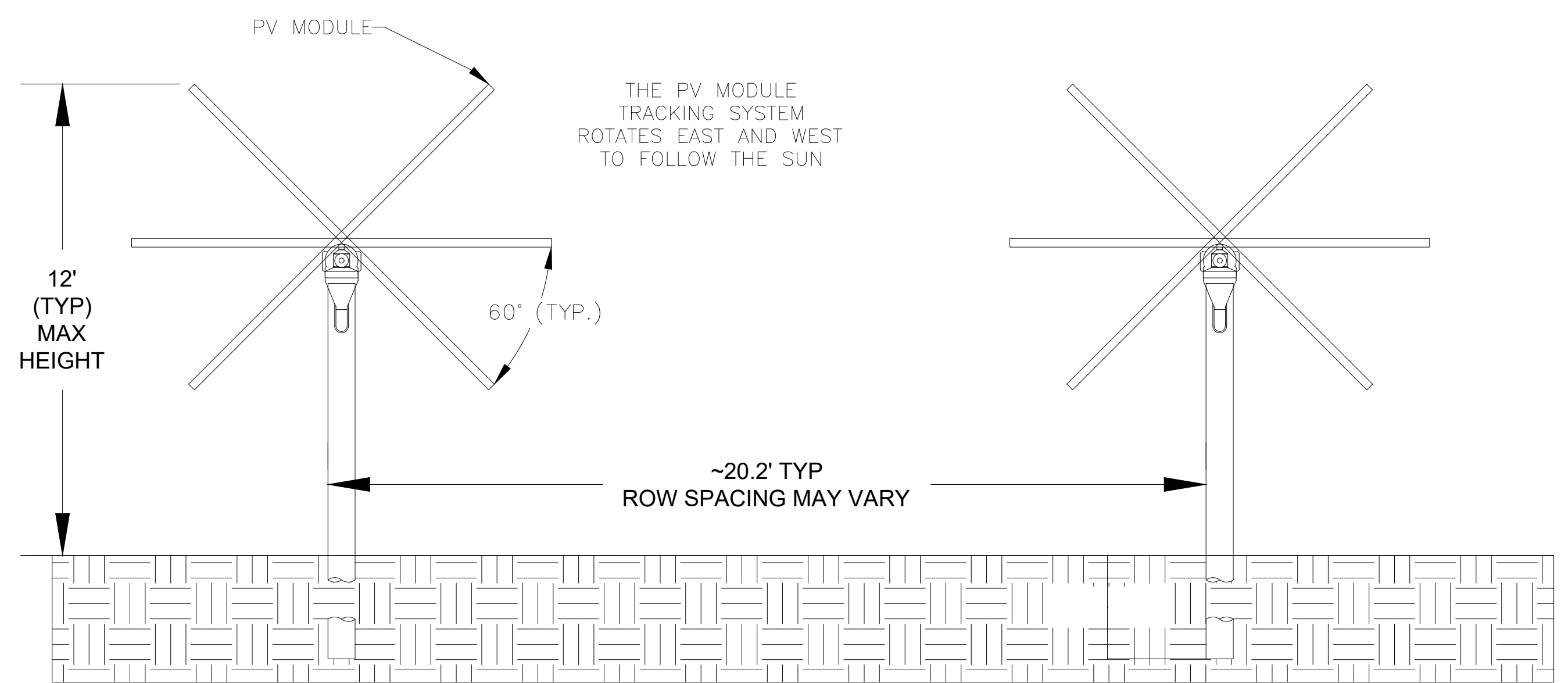
REPRODUCTION, DISCLOSURE, OR USE WITHOUT SPECIFIC WRITTEN AUTHORIZATION IS STRICTLY FORBIDDEN

PROJECT NUMBER:
IN-2022-XXXX

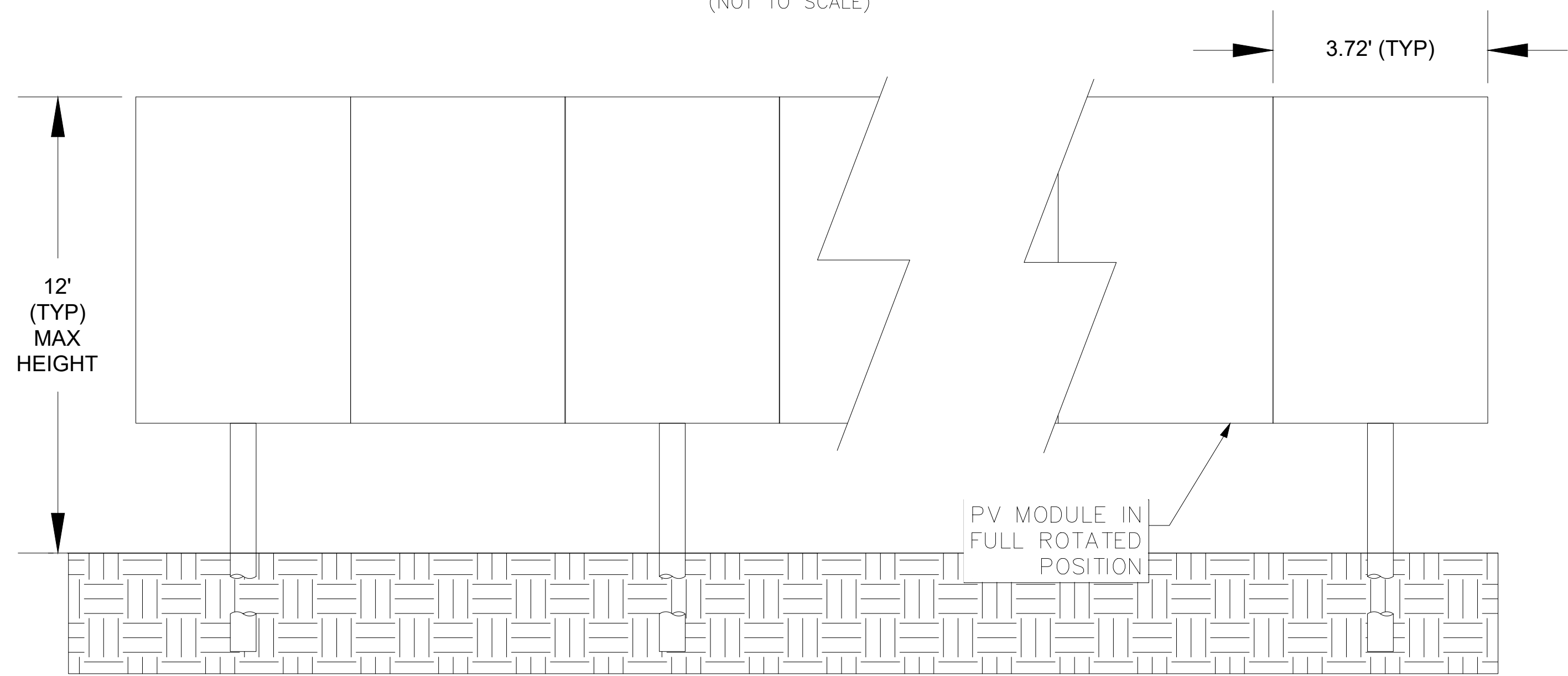
SHEET TITLE:
DETAILS
NOT FOR CONSTRUCTION

BLUEGRASS CREEK SOLAR
SINGLE AXIS SOLAR TRACKER AND CENTRAL INVERTER DETAILS
VANDERBURGH COUNTY, IN

#	REVISION			
	DATE	ID	RE	RE
1.1	5/27/2025			
1.2	6/2/2025			
1.3	6/16/2025			



SECTION VIEW
TYPICAL RACK SECTION
(NOT TO SCALE)

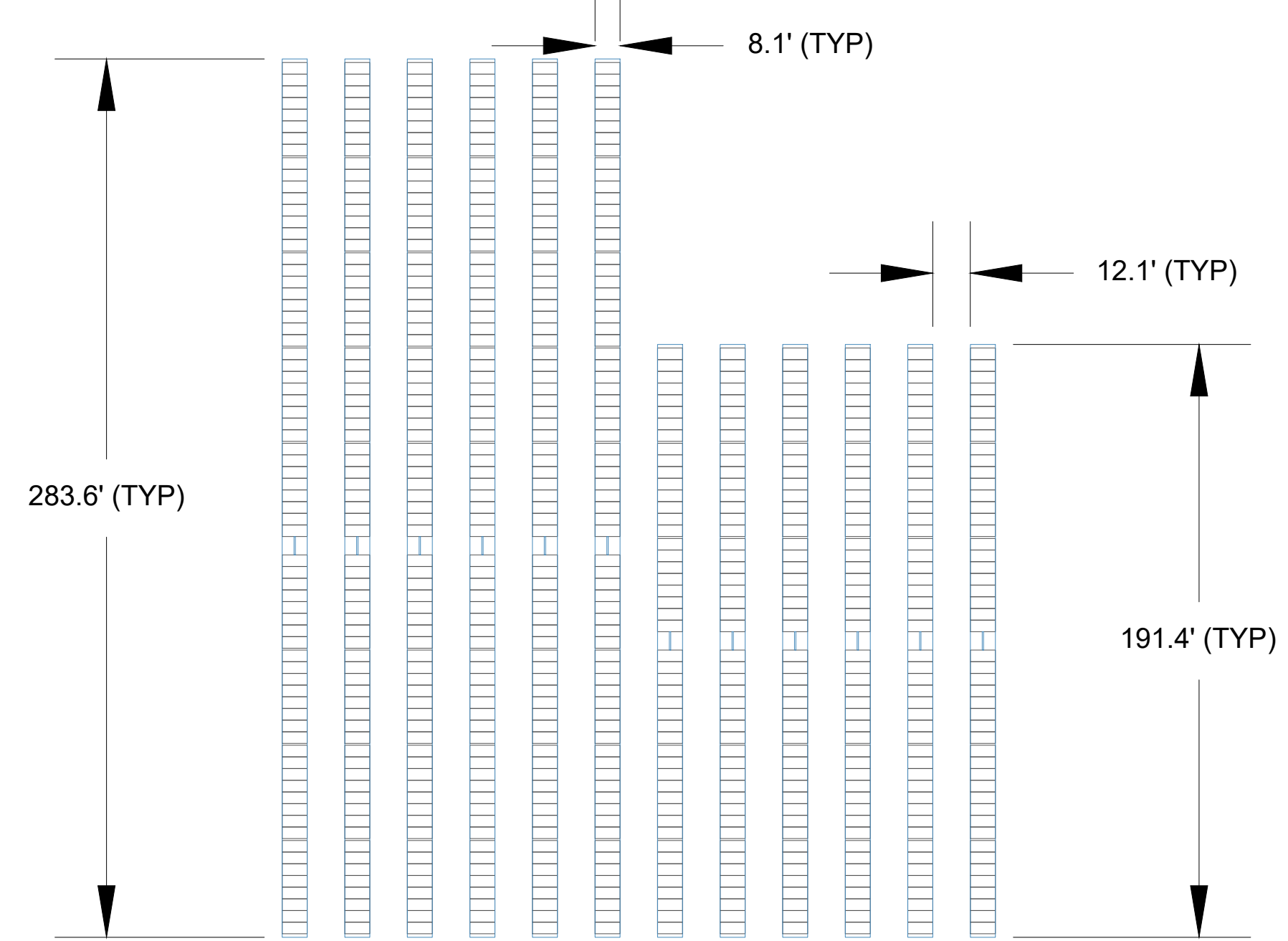


ELEVATION VIEW
TYPICAL RACK ELEVATION
(NOT TO SCALE)

DIMENSIONS SHOW ARE PRELIMINARY AND ARE SUBJECT TO CHANGE DURING FINAL ENGINEERING

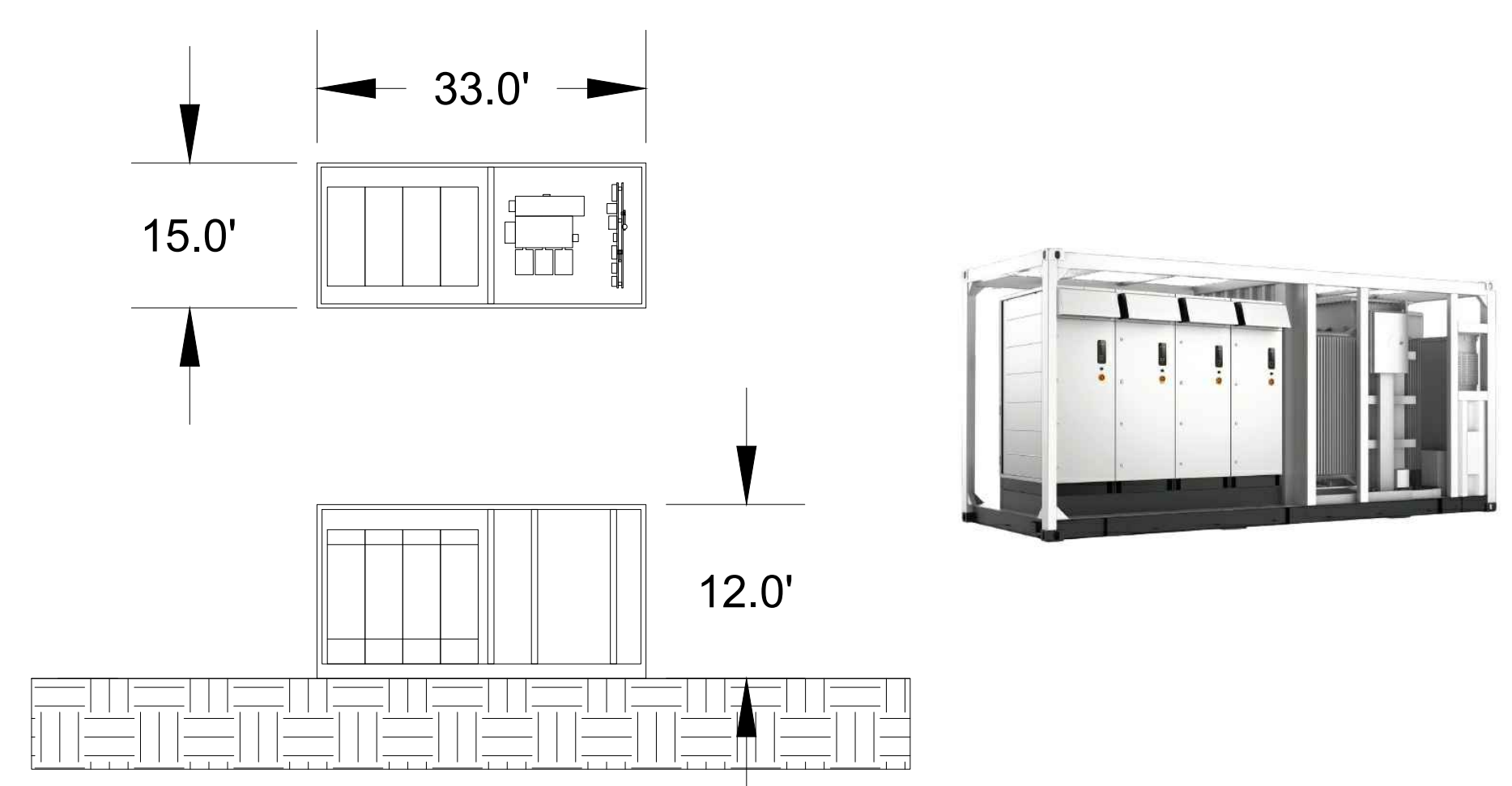
6 SINGLE AXIS TRACKER SOLAR ARRAY DETAIL

SCALE: NTS



- NOTES:
- THIS IS REPRESENTATIVE OF A FULL AND TWO-THIRDS LENGTH TRACKERS USED THROUGHOUT THE LAYOUT.
 - ALL DIMENSIONS AND LENGTHS ARE SUBJECT TO CHANGE PENDING FINAL ELECTRICAL ENGINEERING PLANS AND COORDINATION.

7 TRACKER TOP VIEW DETAIL - FULL AND TWO-THIRDS LENGTH



- NOTES:
- ALL DIMENSIONS AND LENGTHS ARE SUBJECT TO CHANGE PENDING FINAL ELECTRICAL ENGINEERING PLANS AND COORDINATION.

8 CENTRAL INVERTER & TRANSFORMER TOP AND PROFILE VIEW

SUBSTATION, FENCING, & MOTION ACTIVATED LIGHTING DETAILS



REPRODUCTION, DISCLOSURE, OR USE WITHOUT SPECIFIC WRITTEN AUTHORIZATION IS STRICTLY FORBIDDEN

PROJECT NUMBER:
IN-2022-XXXX

SHEET TITLE:
DETAILS
NOT FOR CONSTRUCTION

BLUEGRASS CREEK SOLAR
SUBSTATION, FENCING, & MOTION ACTIVATED LIGHTING DETAILS
VANDERBURGH COUNTY, IN

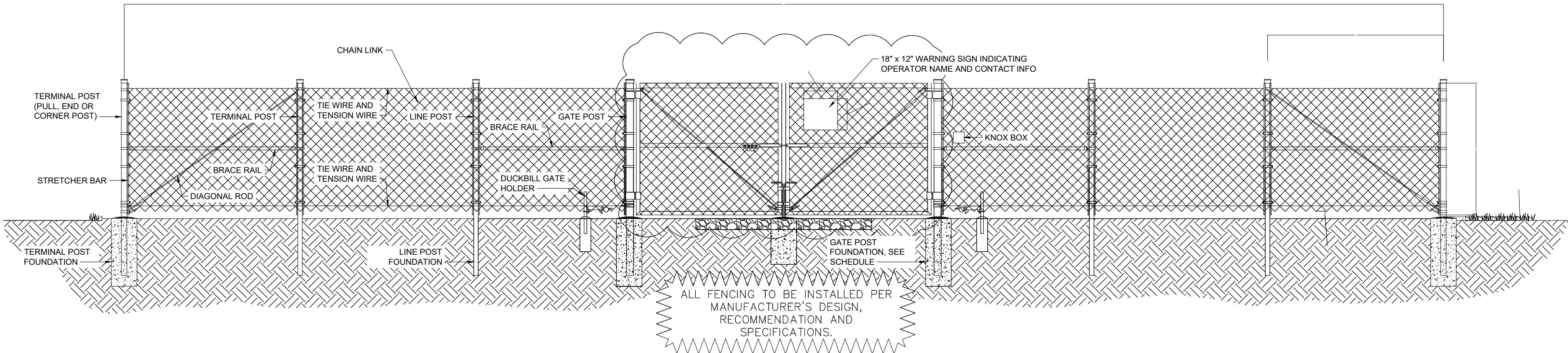
PUBLIC RIGHT OF WAY WIDTHS		
ROAD NAME	SIDE	ROW WIDTH FROM CENTERLINE
SEVEN HILLS RD	NORTH	15 FEET
SEVEN HILLS RD	SOUTH	15 FEET
SR 57	EAST	50 FEET
SR 57	WEST	50 FEET
BASILINE ROAD	NORTH	30 FEET
BASILINE ROAD	SOUTH	30 FEET
VOLKMAN ROAD	EAST	30 FEET
VOLKMAN ROAD	WEST	25 FEET
OLD PETERSBURG RD	EAST	30 FEET
OLD PETERSBURG RD	WEST	30 FEET
INTERSTATE I-69	EAST	50 FEET
INTERSTATE I-69	WEST	50 FEET

REQUIRED AND OBSERVED SETBACKS		
SETBACK FROM	REQUIRED SETBACK	OBSERVED SETBACK
PUBLIC ROAD ROW	40 FEET	40 TO 100 FEET
NON-PARTICIPATING HOUSES	250 FEET FROM PRINCIPAL RESIDENTIAL STRUCTURE	OVER 300 FEET
NON-PARTICIPATING PROPERTY LINE	50 FEET	50 FEET OR MORE

PROPOSED CURB CUT LOCATIONS		
ROAD NAME	SIDE	ROW WIDTH FROM CENTERLINE
SEVEN HILLS RD	NORTH	NONE
SEVEN HILLS RD	SOUTH	NONE
SR 57	EAST	1,090 FEET NORTH OF BASELINE ON 82-02-36-009-044.024-030, THE MCCUTCHAN LAND TRUST PROPERTY
BASELINE ROAD	NORTH	(1) 1,140 FEET WEST OF OLD PETERSBURG RD ON 82-02-35-009-044.027-030, WHEELER ENTERPRISES, L.P. PROPERTY
		(2) 1,140 FEET WEST OF OLD PETERSBURG RD ON 82-02-35-009-044.027-030, WHEELER ENTERPRISES, L.P. PROPERTY
		(3) 4,615 FEET WEST OF VOLKMAN ON 82-02-34-009-040.004-030, ALLEN KALLENBACH AND JACQUELINE KALLENBACH PROPERTY
BASILINE ROAD	SOUTH	1,650 FEET WEST OF OLD PETERSBURG RD ON 82-04-02-009-055.004-030 WHEELER ENTERPRISES, L.P. PROPERTY
VOLKMAN ROAD	EAST	1,345 FEET SOUTH OF SEVEN HILLS ON 82-02-35-009-024.003-030, CURRAN & ANN MILLER FAMILY LLC PROPERTY
VOLKMAN ROAD	WEST	2,810 FEET SOUTH OF SEVEN HILLS ON 82-02-34-009-041.003-030, CURRAN & ANN MILLER FAMILY LLC PROPERTY
OLD PETERSBURG RD	EAST	840 FEET NORTH OF BASELINE RD. ON 82-02-36-009-044.002-030, WHEELER ENTERPRISES, L.P. PROPERTY
OLD PETERSBURG RD	WEST	2,160 FEET NORTH OF BASELINE RD. ON 82-02-35-009-044.027-030, WHEELER ENTERPRISES, L.P. PROPERTY
OLD STATE RD	EAST	4,150 FEET SOUTH OF VOLKMAN ON 82-02-34-009-040.014-030, DARWIN P. MARTIN AND GERALDINE K. MARTIN PROPERTY
OLD STATE RD	WEST	NONE

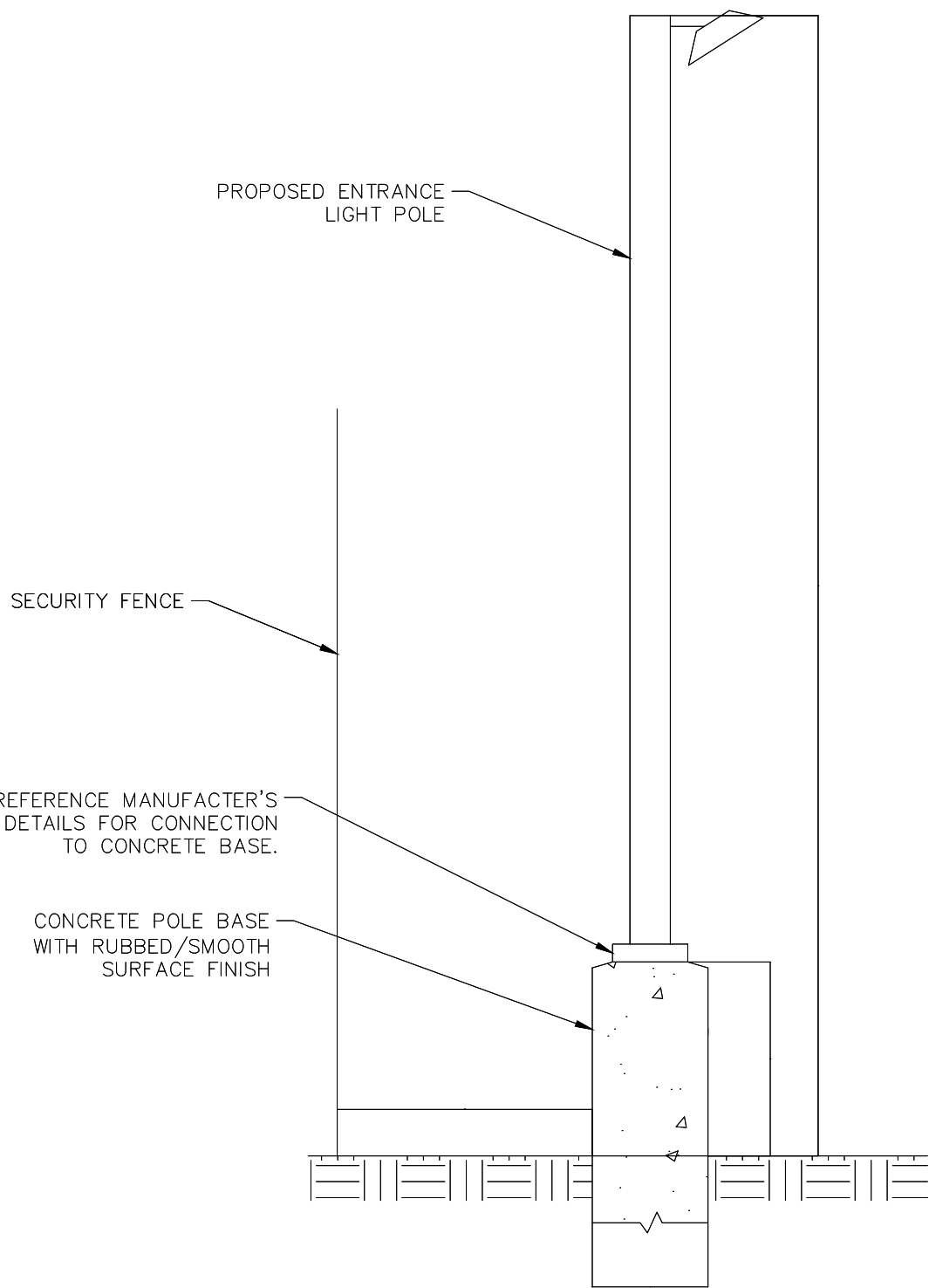
8 ROW, SETBACKS, CURB CUTS

SCALE: NTS



7 CHAINLINK FENCING DETAIL (SUBSTATION ONLY)

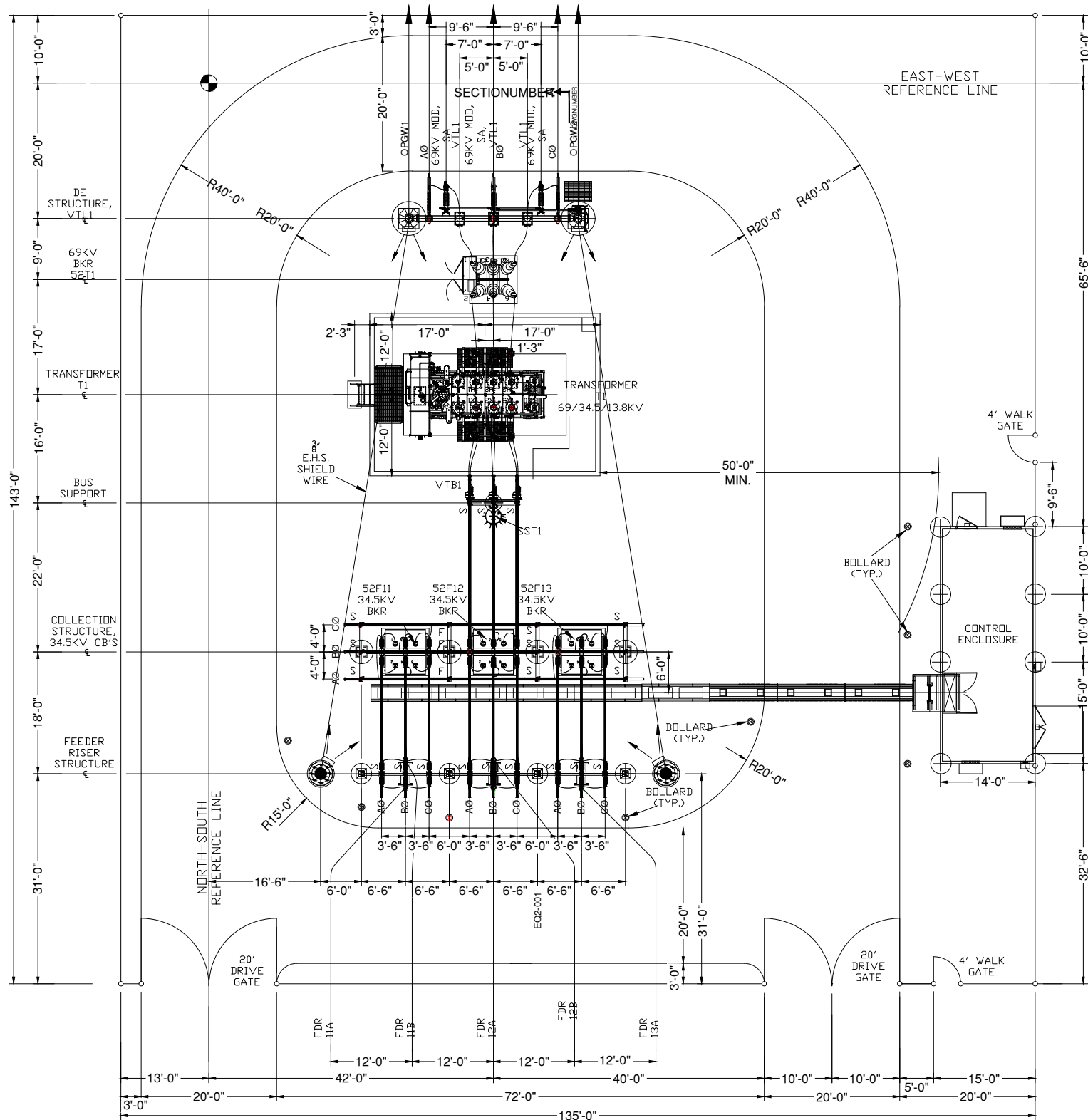
SCALE: NTS



- NOTES:
1. TYPICAL HEIGHT OF POLE WILL BE 10.0'.
 2. BRIGHTNESS OF LIGHT SHALL BE BETWEEN 1500 AND 3000 LUMENS.
 3. LIGHT POLE BASE SHALL BE PLACED APPROXIMATELY 3' INSIDE OF FENCE.

8 MOTION SENSOR LIGHT

SCALE: NTS



9 SUBSTATION DETAIL

SCALE: NTS

#	REVISION			
	DATE	ID	RE	RE
1.1	5/27/2025		RE	
1.2	6/27/2025		RE	
1.3	6/16/2025		RE	

SITE PLAN - APC REVIEW (V1.1)
UPDATED SITE PLAN ANNOTATIONS, DETAILS (V1.2)
UPDATED SITE PLAN EXCLUSIONS, ANNOTATIONS, DETAILS (V1.3)

BATTERY ENERGY STORAGE SYSTEM (BESS) DETAILS



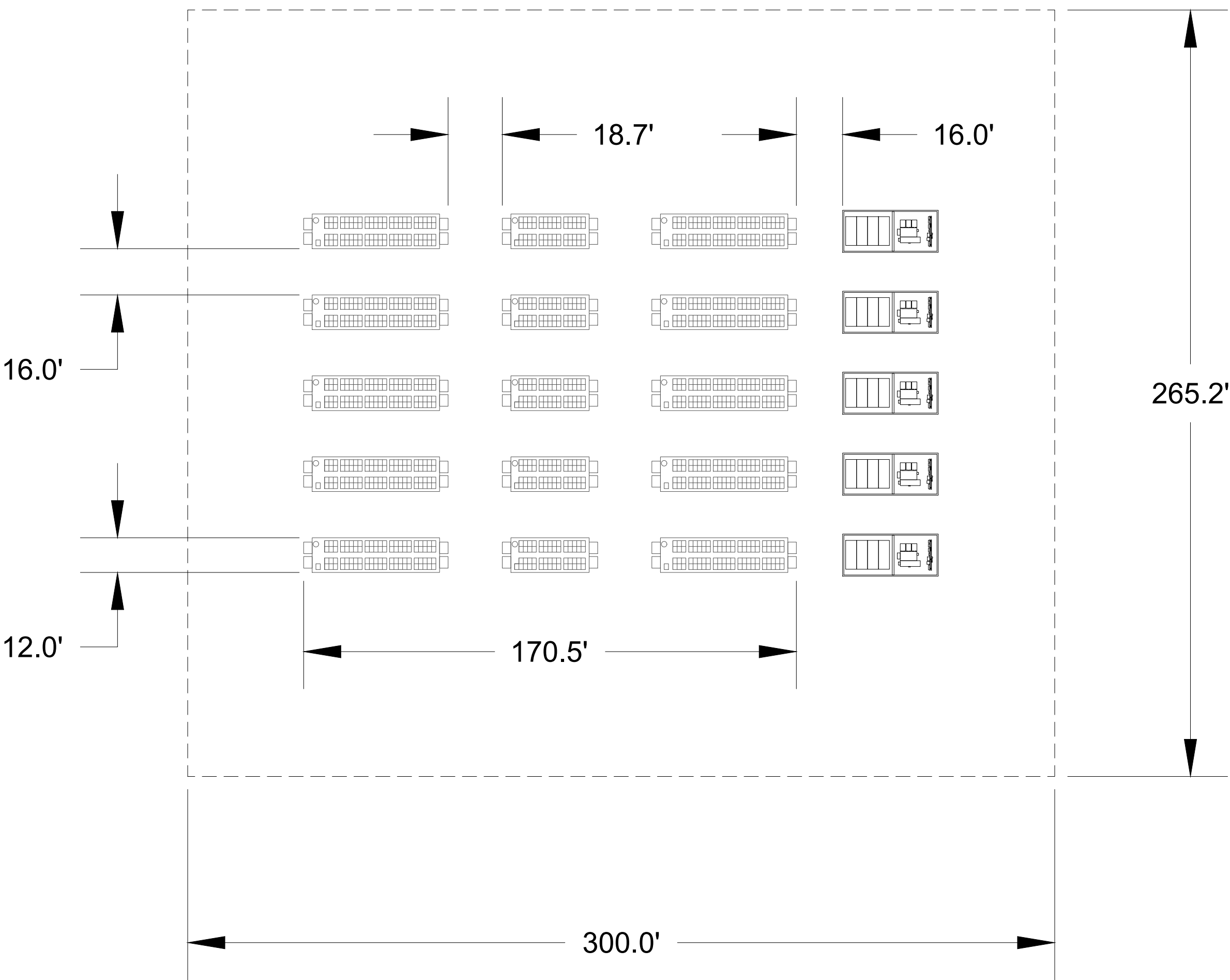
REPRODUCTION, DISCLOSURE, OR USE WITHOUT SPECIFIC WRITTEN AUTHORIZATION IS STRICTLY FORBIDDEN

PROJECT NUMBER:
IN-2022-XXXX

SHEET TITLE:
DETAILS
NOT FOR CONSTRUCTION

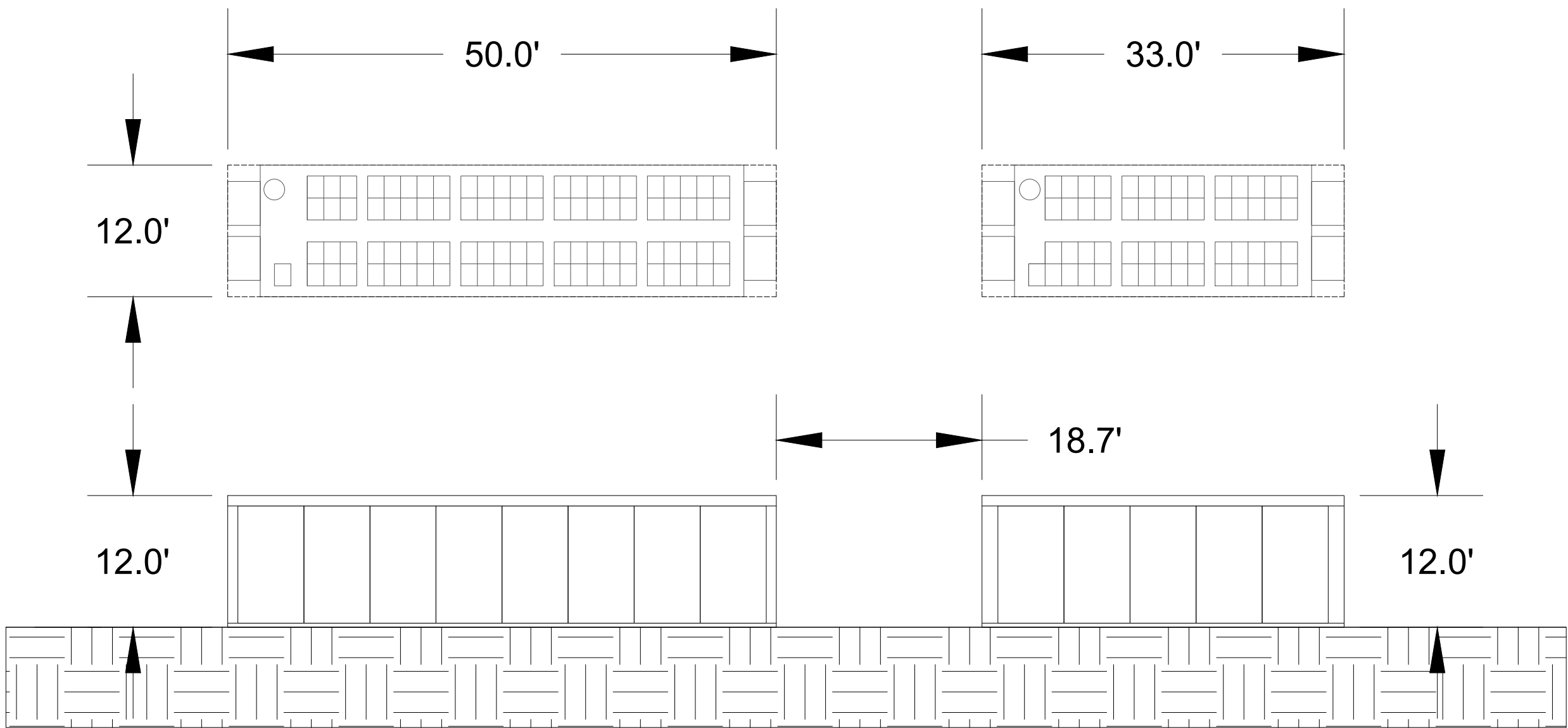
BLUEGRASS CREEK SOLAR
BATTERY ENERGY STORAGE SYSTEM (BESS) DETAILS
VANDERBURGH COUNTY, IN

#	REVISION		DATE	ID
	#	DESCRIPTION		
1.1		SITE PLAN - APC REVIEW (V1.1)	5/27/2025	RE
1.2		UPDATED SITE PLAN ANNOTATIONS, DETAILS (V1.2)	6/2/2025	RE
1.3		UPDATED SITE PLAN EXCLUSIONS, ANNOTATIONS, DETAILS (V1.3)	6/16/2025	RE



NOTES:
1. ALL DIMENSIONS AND LENGTHS ARE SUBJECT TO CHANGE PENDING FINAL ELECTRICAL ENGINEERING PLANS AND COORDINATION.

10 ENERGY STORAGE FACILITY DETAIL



NOTES:
1. ALL DIMENSIONS AND LENGTHS ARE SUBJECT TO CHANGE PENDING FINAL ELECTRICAL ENGINEERING PLANS AND COORDINATION.

11 ENERGY STORAGE FACILITY PROFILE VIEW

SCALE: NTS

CONCEPTUAL LANDSCAPE PLAN - PLANTING MODULES & SCHEDULES



REPRODUCTION, DISCLOSURE, OR USE WITHOUT SPECIFIC
WRITTEN AUTHORIZATION IS STRICTLY FORBIDDEN

PROJECT NUMBER:

IN-2022-XXXX

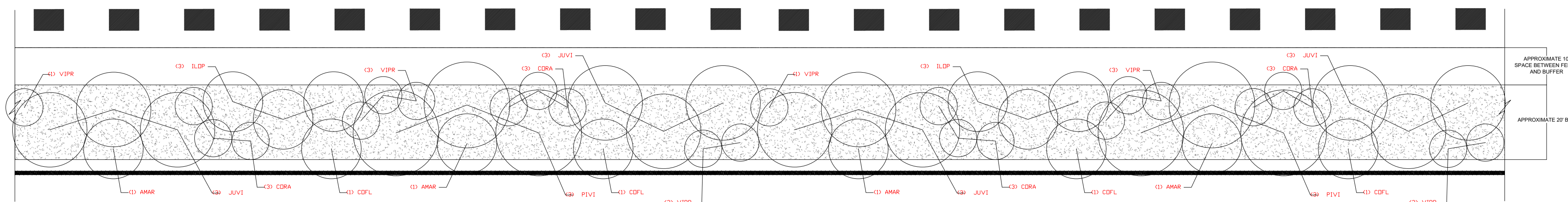
SHEET TITLE:

DETAILS

NOT FOR CONSTRUCTION

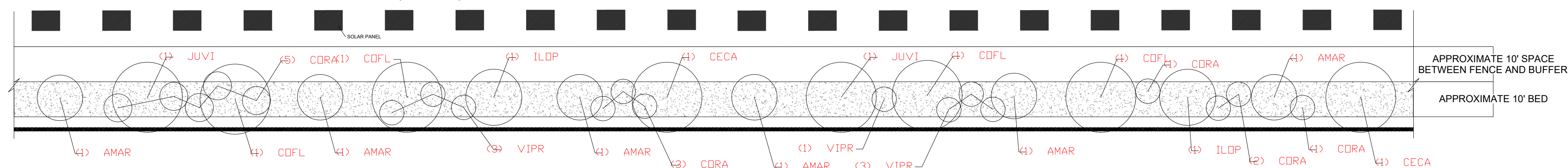
#	REVISION	ID	DATE
1.1	SITE PLAN - APC REVIEW (V1.1)		5/27/2025
1.2	UPDATED SITE PLAN ANNOTATIONS, DETAILS (V1.2)		6/2/2025
1.3	UPDATED SITE PLAN EXCLUSIONS, ANNOTATIONS, DETAILS (V1.3)		6/16/2025

TYPICAL 400' SECTION OF PROPERTY SCREENING (TYPE 1)



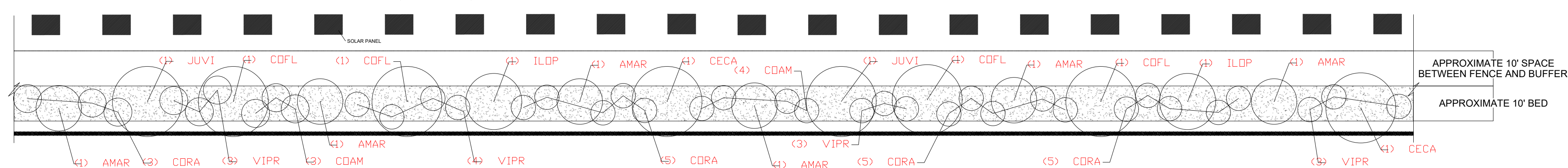
PROPERTY SCREENING (TYPE 1) +/- 17960 LF									
SYMBOL	BOTANICAL NAME	COMMON NAME	APPROXIMATE MATURE HEIGHT	APPROXIMATE MATURE SPREAD	CONTAINER TYPE	SPECIFICATION	QUANTITY PER 200' SEGMENT	ESTIMATED TOTAL QUANTITY	NOTES
AMAR	AMELANCHIER ARBOREA	DOWNY SERVICEBERRY	25'	20'	CONTAINER/B&B	MINIMUM 1.5" CAL.	2	180	-SPACE PLANTS AS SHOWN IN TYPICAL LAYOUT. -SPACING BASED ON 2/3 SIZE OF MATURE CANOPY. -INTENT IS TO LET THE CANOPIES GROW TOGETHER AND CREATE A SCREEN OF THE SOLAR EQUIPMENT. -SHRUBS SHALL BE LOCATED BETWEEN TREES AS SHOWN IN TYPICAL LAYOUT TO MINIMIZE SIGHTLINE TOWARDS THE PROJECT AREA.
COFL	CORNUS FLORIDA	FLOWERING DOGWOOD	30'	30'	CONTAINER/B&B	MINIMUM 1.5" CAL.	2	180	
CORA	CORNUS RACEMOSA	GRAY DOGWOOD	15'	15'	CONTAINER/B&B	MINIMUM 30" HEIGHT	6	540	
ILOP	ILEX OPACA	AMERICAN HOLLY	40'	25'	CONTAINER/B&B	MINIMUM 10'-12' HEIGHT	3	270	
JUVI	JUNIPERUS VIRGINIANA	EASTERN REDCEDAR	50'	30'	CONTAINER/B&B	MINIMUM 10'-12' HEIGHT	6	540	
PIVI	PINUS VIRGINIANA	VIRGINIA PINE	40'	35'	CONTAINER/B&B	MINIMUM 10'-12' HEIGHT	3	270	
VIPR	VIBURNUM PRUNIFOLIUM	BLACKHAW VIBURNUM	15'	10'	CONTAINER/B&B	MINIMUM 30" HEIGHT	6	540	
							TOTAL QUANTITY	2,520	

TYPICAL 400' SECTION OF STREET SCREENING (TYPE 2)



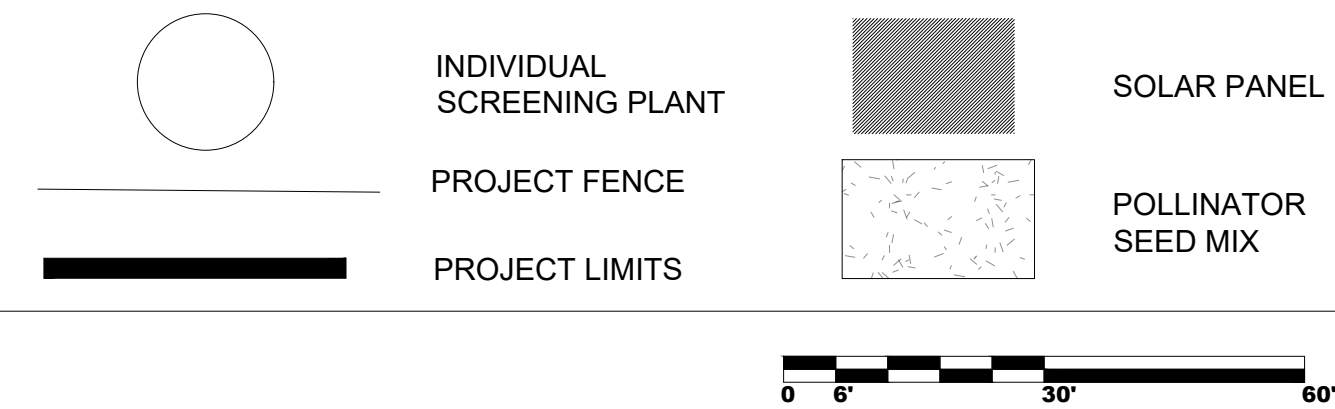
STREET SCREENING (TYPE 2): +/- 9130 LF									
SYMBOL	BOTANICAL NAME	COMMON NAME	APPROXIMATE MATURE HEIGHT	APPROXIMATE MATURE SPREAD	CONTAINER TYPE	SPECIFICATION	QUANTITY PER 400' SEGMENT	ESTIMATED TOTAL QUANTITY	NOTES
AMAR	AMELANCHIER ARBOREA	DOWNY SERVICEBERRY	25'	20'	CONTAINER/B&B	MINIMUM 1.5" CAL.	6	138	-SPACE PLANTS AS SHOWN IN TYPICAL LAYOUT. SMALL TREES AND EVERGREEN TREES SHALL BE SPACED AT 25' O.C. SPACING. SHRUBS SHALL BE LOCATED BETWEEN TREES AS SHOWN IN TYPICAL LAYOUT TO MINIMIZE SIGHTLINES TOWARDS THE PROJECT AREA.
CECA	CERCIS CANADENSIS	EASTERN REDBUD	30'	35'	CONTAINER/B&B	MINIMUM 1.5" CAL.	2	46	
COFL	CORNUS FLORIDA	FLOWERING DOGWOOD	30'	30'	CONTAINER/B&B	MINIMUM 1.5" CAL.	4	92	
CORA	CORNUS RACEMOSA	GRAY DOGWOOD	15'	15'	CONTAINER/B&B	MINIMUM 30" HEIGHT	12	276	
ILOP	ILEX OPACA	AMERICAN HOLLY	40'	25'	CONTAINER/B&B	MINIMUM 10'-12' HEIGHT	2	46	
JUVI	JUNIPERUS VIRGINIANA	EASTERN REDCEDAR	50'	30'	CONTAINER/B&B	MINIMUM 10'-12' HEIGHT	2	46	
VIPR	VIBURNUM PRUNIFOLIUM	BLACKHAW VIBURNUM	15'	10'	CONTAINER/B&B	MINIMUM 30" HEIGHT	7	161	
							TOTAL QUANTITY	805	

TYPICAL 400' SECTION OF STREET SCREENING (TYPE 2A)

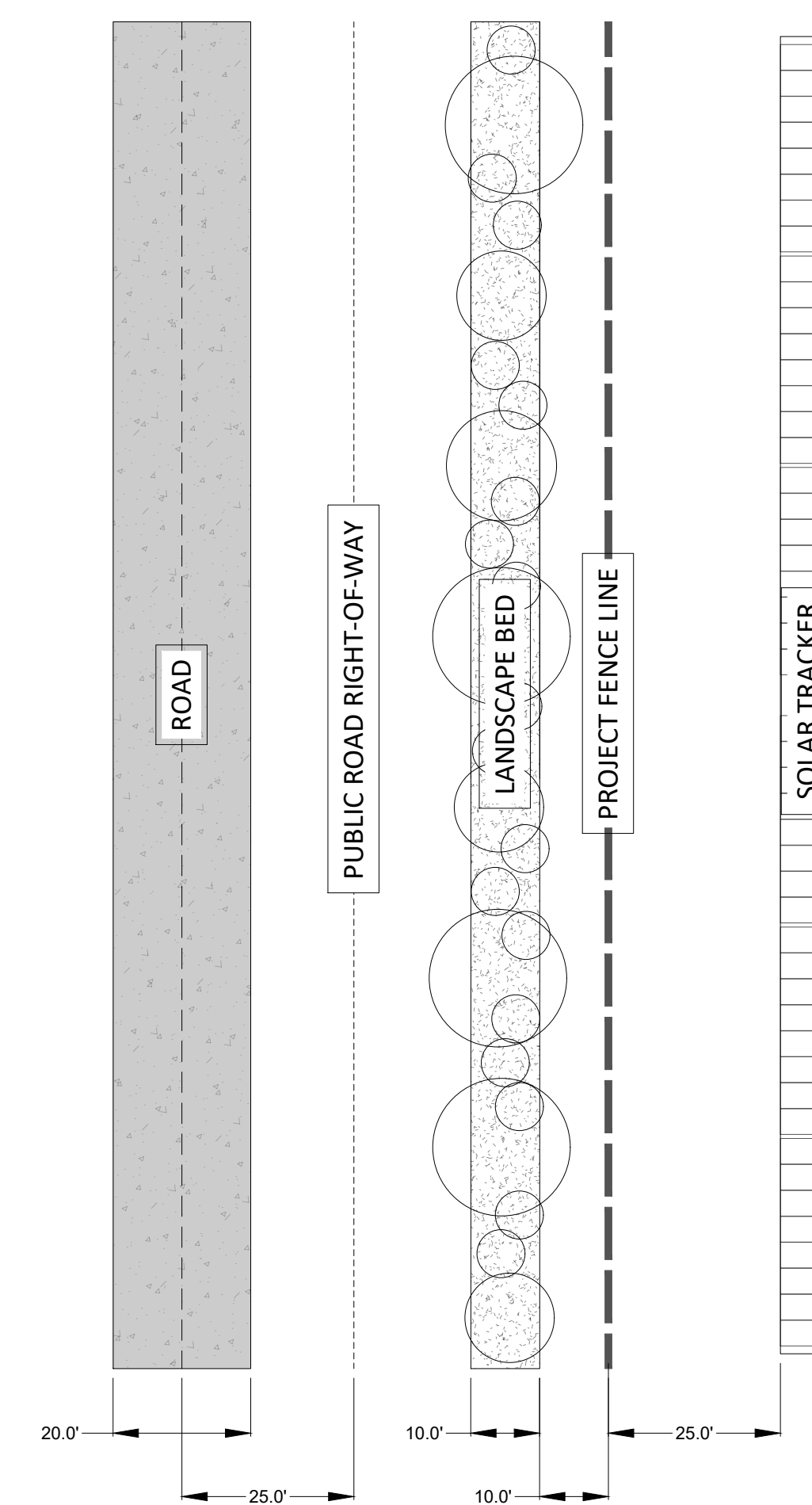


STREET SCREENING (TYPE 2A): +/- 6800 LF									
SYMBOL	BOTANICAL NAME	COMMON NAME	APPROXIMATE MATURE HEIGHT	APPROXIMATE MATURE SPREAD	CONTAINER TYPE	SPECIFICATION	QUANTITY PER 400' SEGMENT	ESTIMATED TOTAL QUANTITY	NOTES
AMAR	AMELANCHIER ARBOREA	DOWNY SERVICEBERRY	25'	20'	CONTAINER/B&B	MINIMUM 1.5' CAL.	6	102	-SPACE PLANTS AS SHOWN IN TYPICAL LAYOUT. -SMALL TREES AND EVERGREEN TREES SHALL BE SPACED AT 25' O.C. SPACING. SHRUBS SHALL BE LOCATED BETWEEN TREES AS SHOWN IN TYPICAL LAYOUT TO MINIMIZE SIGHTLINES TOWARDS THE PROJECT AREA.
CECA	CERCIS CANADENSIS	EASTERN REDBUD	30'	30'	CONTAINER/B&B	MINIMUM 1.5' CAL.	2	34	
COFL	CORNUS FLORIDA	FLOWERING DOGWOOD	30'	30'	CONTAINER/B&B	MINIMUM 1.5' CAL.	4	68	
CORA	CORNUS RACEMOSA	GRAY DOGWOOD	15'	15'	CONTAINER/B&B	MINIMUM 30" HEIGHT	18	306	
COAM	CORYLUS AMERICANA	AMERICAN HAZELNUT	12'	12'	CONTAINER/B&B	MINIMUM 30" HEIGHT	7	119	
ILOP	ILEX OPACA	AMERICAN HOLLY	40'	25'	CONTAINER/B&B	MINIMUM 10'-12' HEIGHT	2	34	
JUVI	JUNIPERUS VIRGINIANA	EASTERN REDCEDAR	50'	30'	CONTAINER/B&B	MINIMUM 10'-12' HEIGHT	2	34	
VIPR	VIBURNUM PRUNIFOLIUM	BLACKHAW VIBURNUM	15'	10'	CONTAINER/B&B	MINIMUM 30" HEIGHT	13	221	
							TOTAL QUANTITY	918	

LEGEND



EXAMPLE OF LANDSCAPE DIMENSIONS (TYP)



LANDSCAPING TO BE PLACED BETWEEN
RIGHT-OF-WAY AND FENCE LINE (TYP)

SCALE: NTS

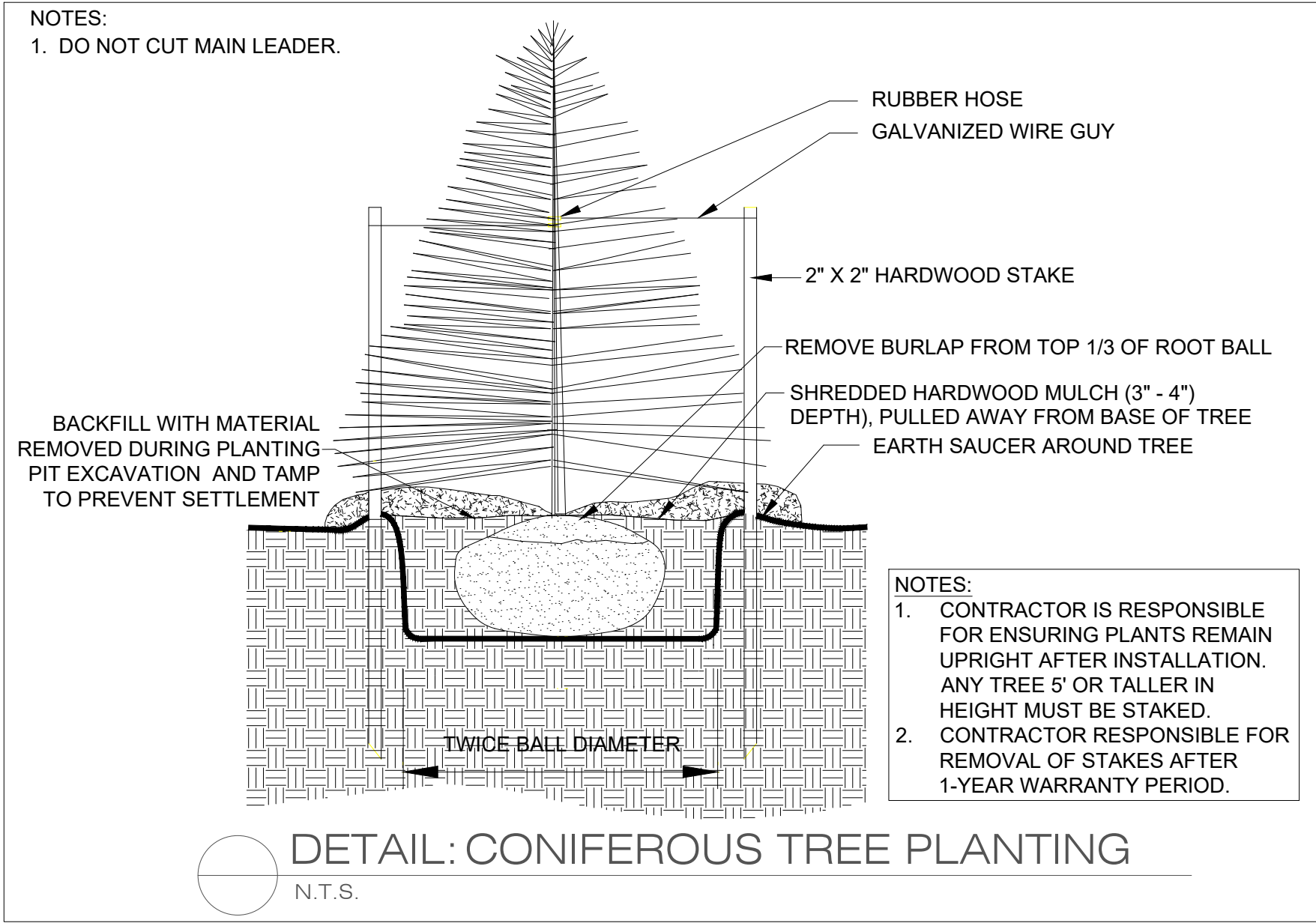
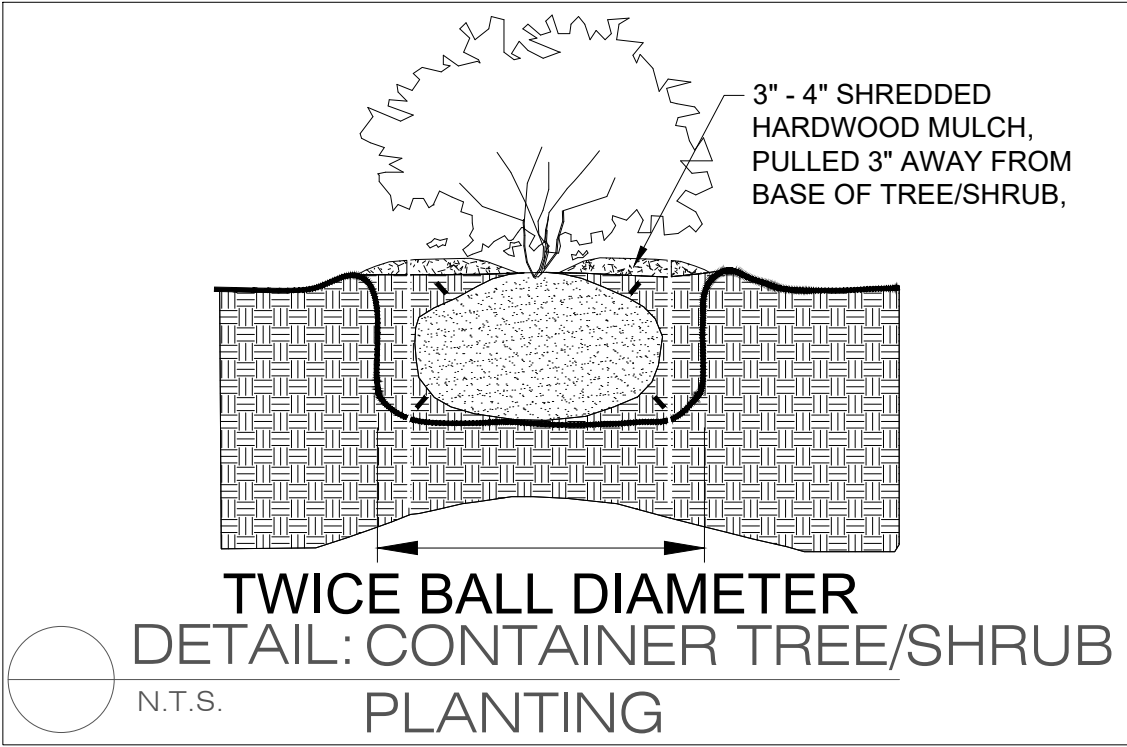
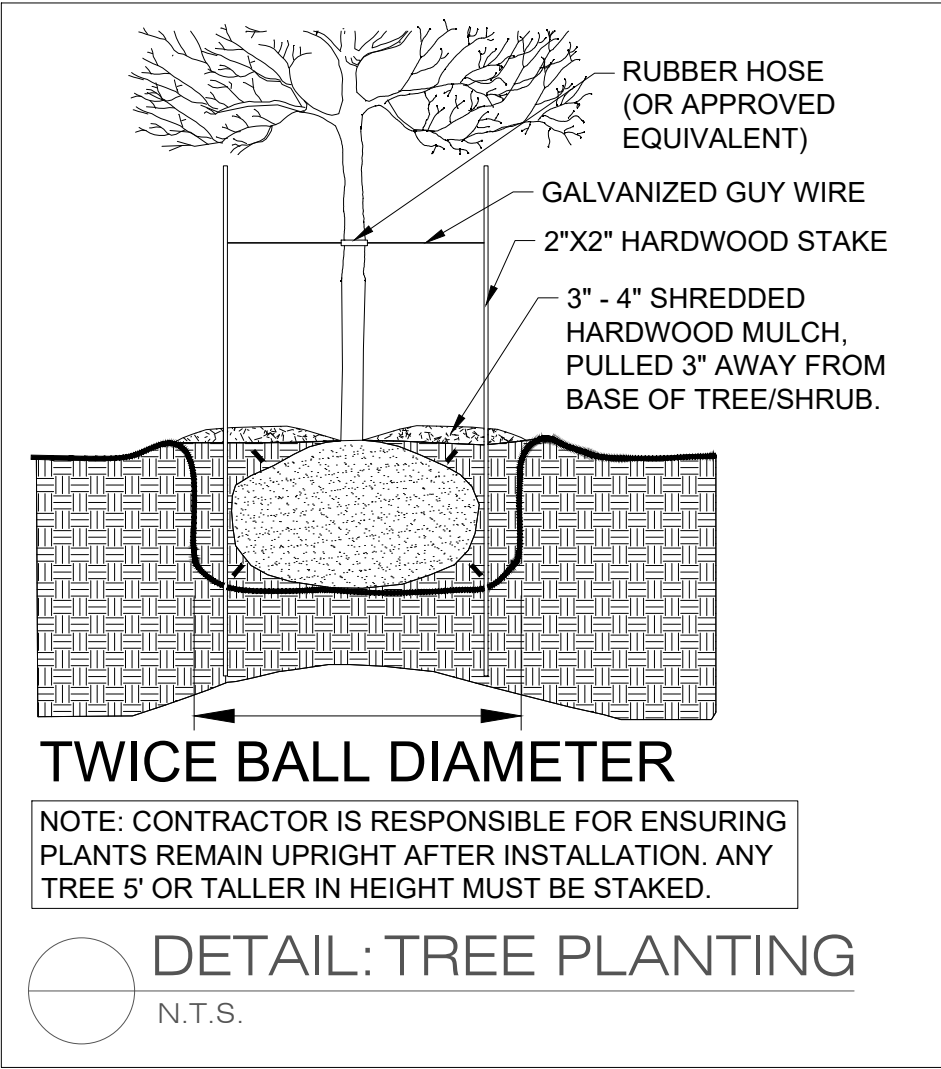
CONCEPTUAL LANDSCAPE PLAN - NOTES & DETAILS

VEGETATIVE SCREENING NOTES:
TREE INSTALLATION

1. THE CONTRACTOR SHALL BE RESPONSIBLE FOR LAYOUT OF ALL WORK COVERED UNDER THESE PLANS.
2. ALL PLANT MATERIAL, UNLESS OTHERWISE SPECIFIED, SHALL BE UNIFORMLY BRANCHED AND HAVE A VIGOROUS ROOT SYSTEM. PLANT MATERIAL SHALL BE HEALTHY, VIGOROUS, AND FREE FROM DEFECTS, DECAY, DISEASES, INSECT PEST EGGS, AND ALL FORMS OF INFESTATION. ALL PLANT MATERIAL SHALL BE FRESH, FREE FROM TRANSPLANT SHOCK OR VISIBLE WILT. PLANTS DEEMED UNHEALTHY SHALL BE REJECTED.
3. ALL PLANT MATERIAL SHALL MEET THE MINIMUM SPECIFICATIONS AND STANDARDS DESCRIBED IN THE CURRENT ISSUE OF "THE AMERICAN STANDARD FOR NURSERY STOCK," PUBLISHED BY THE AMERICAN ASSOCIATION OF NURSERYMEN, 1250 I STREET, N.W., SUITE 500, WASHINGTON, D.C. 20005.
4. ALL CONTAINER STOCK SHALL HAVE BEEN PROPAGATED IN A CONTAINER LONG ENOUGH FOR THE ROOT SYSTEM TO HAVE DEVELOPED SUFFICIENTLY TO HOLD ITS SOIL. CONTAINER STOCK WITH POORLY DEVELOPED ROOT SYSTEMS SHALL NOT BE ACCEPTED.
5. PLANTS SHALL BE PREPARED FOR SHIPMENT IN A MANNER THAT SHALL NOT CAUSE DAMAGE TO THE BARK, BUDS, BRANCHES, STEMS, OR OVERALL SHAPE OF THE STOCK. CONTAINER GROWN PLANTS SHALL BE TRANSPORTED IN THE CONTAINERS IN WHICH THEY HAVE BEEN GROWN.
6. PLANTS NOT INSTALLED ON THE DAY OF ARRIVAL AT THE SITE SHALL BE STORED AND PROTECTED BY THE CONTRACTOR. OUTSIDE STORAGE AREAS SHALL BE SHADED AND PROTECTED FROM THE WIND AND SUN. PLANTS STORED ON SITE SHALL BE PROTECTED FROM ANY DRYING AT ALL TIMES BY COVERING THE BALLS OR ROOTS WITH MOIST SAWDUST, WET BURLAP, WOOD CHIPS, SHREDDED BARK, PEAT MOSS, OR OTHER SIMILAR MULCHING MATERIAL.
7. PLANT SUBSTITUTIONS MAY BE MADE BASED ON AVAILABILITY BUT MUST BE OF SIMILAR SIZE AND LANDSCAPE (SCREENING) VALUE. ALL SUBSTITUTIONS MUST BE APPROVED BY THE OWNER OR OWNER'S REPRESENTATIVE.
8. THE CONTRACTOR SHALL VERIFY ALL DIMENSIONS IN THE FIELD.
9. NO PLANTING SHALL OCCUR WHEN THE SOIL IS FROZEN.

PLANTING SEQUENCE

1. DIG THE PLANTING HOLE A MINIMUM OF 2x WIDTH OF ROOTBALL. DO NOT DIG THE HOLE DEEPER THAN ROOT BALL DEPTH.
2. HOLES FOR INDIVIDUAL PLANTINGS SHALL BE EXCAVATED TO PRODUCE VERTICAL SIDES AND FLAT BOTTOMS. ALL PLANTING HOLES SHALL HAVE ROUGHED, SCARIFIED SIDES AND BOTTOMS.
3. THE CONTRACTOR SHALL APPLY AGRIFORM FOREST STARTER TABLETS, OR EQUIVALENT PRODUCT, TO EACH PLANT AS PER MANUFACTURER'S DIRECTIONS ON LABEL AT TIME OF PLANTING.
4. LIFT AND SET THE TREE BY ROOT BALL ONLY. DO NOT LIFT USING THE TREE TRUNK AND DO NOT USE TREE TRUNK AS A LEVER.
5. SET THE TOP OF THE ROOT BALL LEVEL WITH THE SOIL SURFACE OR SLIGHTLY HIGHER IF THE SOIL IS PRONE TO SETTLING.
6. BACKFILL WITH EXISTING SOIL THAT HAS BEEN WELL-TILLED OR BROKEN UP.
7. PRUNING SHALL BE LIMITED TO DEAD, DISEASED, OR BROKEN LIMBS ONLY AND SHALL BE IN ACCORDANCE WITH ANSI A300 SPECIFICATIONS.
8. REMOVE ANY TRUNK WRAP REMAINING AT TIME OF PLANTING. NO WRAPS SHALL BE PLACED ON TRUNK.
9. THE CONTRACTOR SHALL RESTORE AREAS DISTURBED BY THE INSTALLATION OF SHRUBS AND TREES.
10. ONLY INDIVIDUAL PLANTS OR CLUSTERS OF PLANS SHALL BE MULCHED. THE REMAINING BUFFERYARD SHALL BE SEEDED WITH NATIVE POLLINATOR FRIENDLY SPECIES UNLESS ALREADY ESTABLISHED WITH NATIVE HERBACEOUS VEGETATION.
11. CONTRACTOR SHALL PROVIDE A 100% REPLACEMENT WARRANTY OF ALL LANDSCAPE PLANTINGS FOR A PERIOD OF THREE YEARS.



REPRODUCTION, DISCLOSURE, OR USE WITHOUT SPECIFIC WRITTEN AUTHORIZATION IS STRICTLY FORBIDDEN

PROJECT NUMBER:
IN-2022-XXXX

SHEET TITLE:
DETAILS
NOT FOR CONSTRUCTION

#	REVISION			
	DATE	ID	RE	RE
1.1	5/27/2025			
1.2	6/2/2025			
1.3	6/16/2025			

BLUEGRASS CREEK SOLAR
CONCEPTUAL LANDSCAPE PLAN
NOTES AND DETAILS
VANDERBURGH COUNTY, IN

REVISION

SITE PLAN - APC REVIEW (V1.1)

UPDATED SITE PLAN ANNOTATIONS, DETAILS (V1.2)

UPDATED SITE PLAN EXCLUSIONS, ANNOTATIONS, DETAILS (V1.3)