
ADDENDUM

Project:	4th & Main Park 400 Main Street Evansville, IN 47708	Addendum No.:	002
		Date:	September 24, 2025
Owner:	Evansville Parks and Recreation 100 E Walnut Street Evansville, IN 47713	Project Number:	2404-183
		Contract for:	General

The original specifications and drawings dated September, 2025 for the project noted above are amended as noted in this Addendum Number 002. Receipt of this addendum and any subsequent addenda must be acknowledged on the final bid documents. This addendum consists of 5 item(s) and attachment(s).

1. Reminder: Sealed bids are due by 12 PM CDT on October 1, 2025, at location outlined in specifications.

Drawings.

1. Drawing sheet LA103, EROSION CONTROL PLAN: Add new drawing sheet LA103, EROSION CONTROL PLAN, attached to this Addendum.
2. Drawing sheet U101, SITE UTILITIES PLAN: Delete Drawing Sheet U101 in its entirety and replace with new drawing sheet U101, SITE UTILITIES PLAN, attached to this Addendum.
3. Drawing sheet U201, SITE UTILITY DETAILS: Delete Drawing Sheet U201 in its entirety and replace with new drawing sheet U201, SITE UTILITY DETAILS, attached to this Addendum.
4. Drawing sheet P1.2, FIRST FLOOR PLUMBING PLAN: Delete Drawing Sheet P1.2 in its entirety and replace with new drawing sheet P1.2, FIRST FLOOR PLUMBING PLAN, attached to this Addendum.
5. Drawing sheet P2.1, PLUMBING DETAILS AND SCHEDULES: Delete Drawing Sheet P2.1 in its entirety and replace with new drawing sheet P2.1, PLUMBING DETAILS AND SCHEDULES, attached to this Addendum.

Attachments: LA103, U101, U201, P1.2, P2.1

By: Matthew Maloney

CC:

Material Handling and Spill Prevention

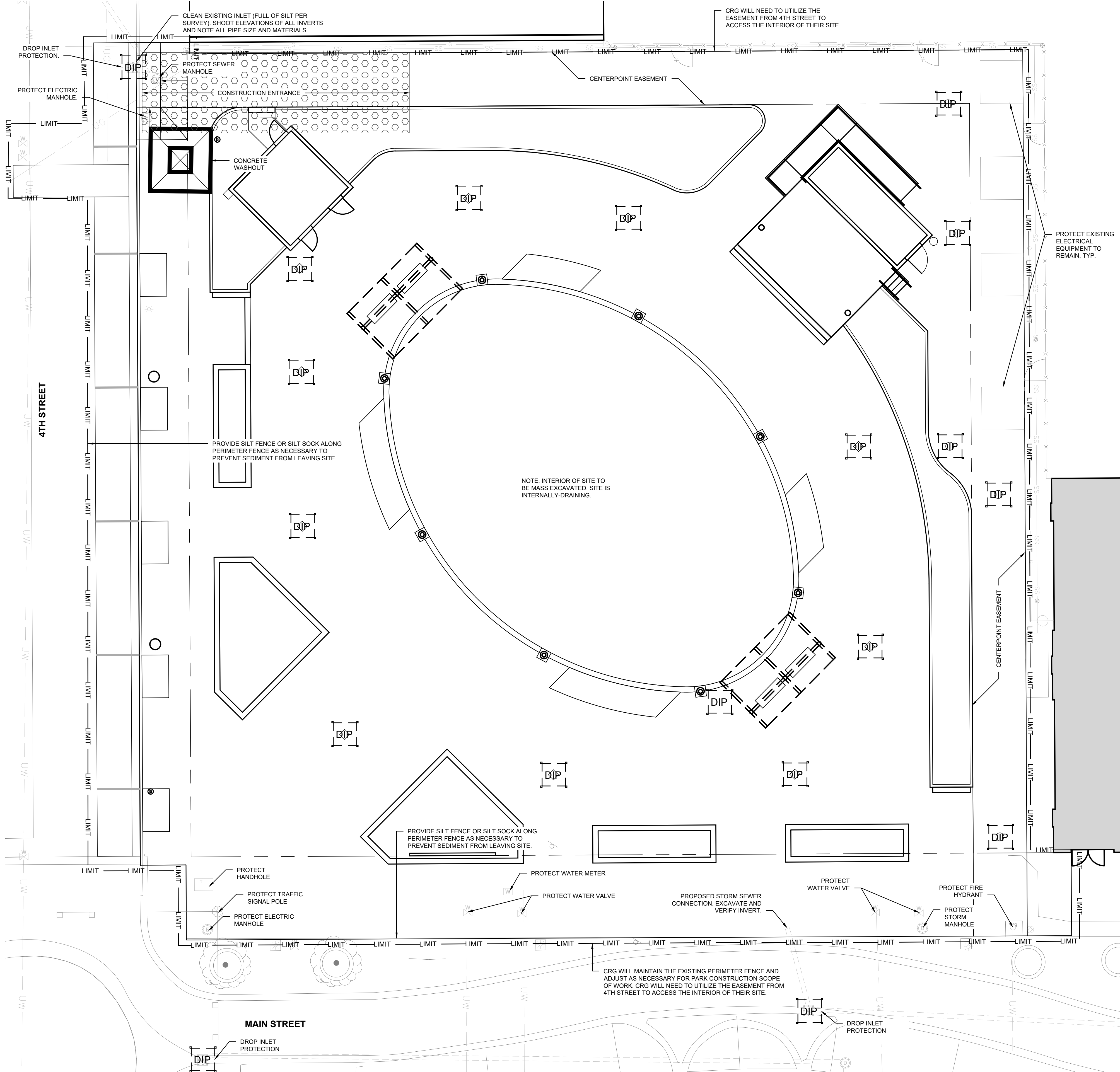
- 1.1 All fueling and servicing of vehicles on site will be conducted within the construction staging area. This area shall be contained with a row of staked straw bales around the perimeter. Secondary containment in the form of drip pans or drop cloths shall be used to contain any spills. The contractor shall maintain a supply of oil-absorbent material to clean up any small spills that may occur. Any spillage will be removed immediately. Used absorbent material shall be removed from the site and disposed of in accordance with the laws of the state of Indiana. Contaminated soils will be placed on heavy plastic and covered or placed into approved containers to prevent contact with storm water. All fuel tanks will be in the containment area. Oils, other vehicle fluids, paints, and solvents will be stored in the construction trailer. Any spill in excess of two gallons will be reported to a representative of the contractor.
- 1.2 If a release containing a hazardous substance in an amount equal to or in excess of a reporting quantity established under either 40 cfr 117 or 40 cfr 302 occurs during a 24-hour period, the contractor will immediately notify the permittee who shall then do the following: notify the National Response Center (NRC) (800-424-8802) and the Indiana State Emergency Management Agency (317-232-3986); as well as the Evansville Fire Department (812) 435-6235. Also, the engineer will prepare a revision to this document to identify measures to prevent the recurrence of such releases.
- 1.3 Concrete trucks will wash out at the designated area as shown on the erosion control plan. The contractor shall take care to insure that no waste materials are discharged into the storm sewers or waters of the state. Each contractor is responsible to provide litter control for trash generated by his/her crew. All trash, including but not limited to, solid waste, paint cans, oil cans, used oil and filters will be contained and disposed of by the contractor in accordance with the laws and regulations of the state of Indiana and the city of Evansville.
- 1.4 The contractor shall furnish and maintain sanitary waste facilities for this project. The facilities shall be cleaned as necessary and the waste materials shall be disposed of in accordance with the laws and regulations of the state of Indiana and the city of Evansville.

Erosion Control General Notes

1. The erosion and sediment control measures shown on the drawings are considered the minimum practices necessary for compliance with the NPDES general permit for stormwater discharges associated with construction activity as identified under articles 5 and 15 of title 327 of the Indiana administrative code. However, site conditions, construction methods, sequencing of work, and general practice may warrant variation and/or additions to the quantities and locations of measures as shown.
2. Erosion and sedimentation control devices shall be installed prior to the beginning of construction.
3. Stabilization measures shall be initiated as soon as practicable in portions of the site where construction activities have temporarily or permanently ceased, but in no case more than fourteen (14) days after work has ceased.
4. Provide silt fence and/or other control devices, as may be required, to control soil erosion during utility construction. All disturbed areas shall be cleaned, graded, and stabilized immediately after the utility installation.
5. Temporary soil stockpiles shall be constructed in a manner such that proper drainage of the site is not impeded. Stockpiles shall be contained within a perimeter control measure (i.e. silt fence, straw bale, or other barrier) to trap sediment. Stockpiles that will remain in excess of 6 months shall be temporarily seeded.
6. Erosion control and sedimentation control devices to be maintained during construction such that they function as intended. After completion of the project the contractor shall remove all devices where a good stand of grass or site improvements has been established and erosion is no longer evident. Removal of the remaining devices shall occur as other areas are established.
7. Erosion control measures shall be inspected every seven (7) days or after each rainfall occurrence that exceeds one-half (1/2) inch. Damage or ineffective devices shall be immediately repaired or replaced.
8. All areas disturbed by grading, excavation, and general construction shall be seeded, mulched, and restored in accordance with the specifications.
9. The contractor must take necessary action to minimize the tracking of mud onto paved roadways. The contractor shall daily remove mud/soil from the pavement, as may be required.
10. Unless otherwise shown, temporary control measures shall be removed upon satisfactory establishment of permanent vegetation.
11. Symbols for inlet protection measures and ditch checks are shown larger than actual size.
12. See sheet LA102 for proposed erosion and sediment control details.

General Construction Sequencing

- 1.1. Notify local review agency at least 48 hours in advance of commencing construction activities.
- 1.2. Flag or otherwise delineate and denote all construction limits.
- 1.3. Identify and protect all existing vegetation to remain.
- 1.4. Establish storage areas for potential pollutants such as fuels, oils, etc.
- 1.5. Establish parking areas for construction equipment, workers, visitors, etc. parking areas shall have temporary stone base to prevent vehicles from tracking mud, soil and sediment.
- 1.6. Arrange for the delivery of dumpsters and port-a-johns
- 1.7. Post required notices such as the NOI.
- 1.8. Contractor shall install a stone construction entrance or similar device prior to the start of earthwork as necessary to prevent soil from being tracked or washed into existing roadways.
- 1.9. Contractor shall install all required construction fences, silt fences, and inlet protections for existing inlets prior to the start of any earth moving or stripping operations.
- 1.10. Land alterations which strip the land of vegetation shall be done in a way that will minimize erosion. Whenever feasible, natural vegetation shall be retained and protected. As grading is done, install silt wraps, silt fences, and other runoff control measures at appropriate locations to keep sediment contained on site.
- 1.11. All disturbed areas shall be seeded and straw mulched, as shown on the plans, immediately after completion of grading activity. For larger projects, this seeding should be complete in phases as the different areas of the site are completed.
- 1.12. Temporary concrete washout area shall be installed after rough grading activities, but prior to any concrete activity occurs on site.
- 1.13. Permanent and final vegetation or structural stormwater pollution prevention devices shall be installed as soon as possible.
- 1.14. If construction activity in any area is to cease for more than seven days, the disturbed areas shall be temporarily seeded.
- 1.15. Contractor shall maintain stormwater pollution prevention measures and devices from the beginning of the construction until such a time that soil is stabilized.
- 1.16. Contractor shall remove and dispose of the temporary stormwater pollution prevention devices once the risk of onsite erosion and the siltation of the streets and storm sewers no longer exist.
- 1.17. These general procedures may not cover all situations: refer to stormwater pollution prevention plans for specific notes and additional details.
- 1.18. Stormwater pollution prevention is to comply with construction stormwater general permit.
- 1.19. The contractor shall control the pollution of air with dust and particulate matter by watering the site at least three times a day, or more, depending on atmospheric conditions, during construction activities that would generate the pollution.
- 1.20. Once the entire site is stabilized coordinate final inspections with the appropriate agencies. File the notice of termination (not) with IDEM when project is complete.



4TH AND MAIN PARK



IFB-508-06-2025
DOWNTOWN
EVANSVILLE, INDIANA

HAFER
architects • designers • engineers

21 SE Third Street,
Suite 800
Evansville, IN 47708
T: 812.422.4187
F: 812.421.6776
www.hafersign.com

In association with:

URBAN PLANNING/LANDSCAPE ARCHITECTURE/CIVIL ENGINEERING

REA **RUNDELL**
ERNSTBERGER
ASSOCIATES

618 E. Market St. Indianapolis, IN. 46202

STRUCTURAL ENGINEERING

JQOL
QUALITY OF LIFE™

8440 Allison Pointe Blvd Suite 425 Indianapolis, IN. 46250



Revisions:

#	Description	Date
01	ADDENDUM #4 NEW SHEET	09/24/2025

Designed By: LW/PA
Drawn By: LW/TJ
Checked By: PA

The drawings, specifications and other documents, including those in electronic form prepared by Hafer for this project are instruments of Service, and may be used solely with respect to this project. The documents may not be reproduced or modified by a third party without first obtaining the express written consent of Hafer. Authorized use of electronic media or file does not guarantee that these files contain complete and accurate information. In order to insure the accuracy of the information contained and that no changes or modifications have been made, these files must be compared to the project's contract documents with stamped and sealed certification and applicable approved modifications.

Sheet title:

**EROSION CONTROL
PLAN**

Architect's Project No:

Date:

2024-183

September 2025

Drawing No:

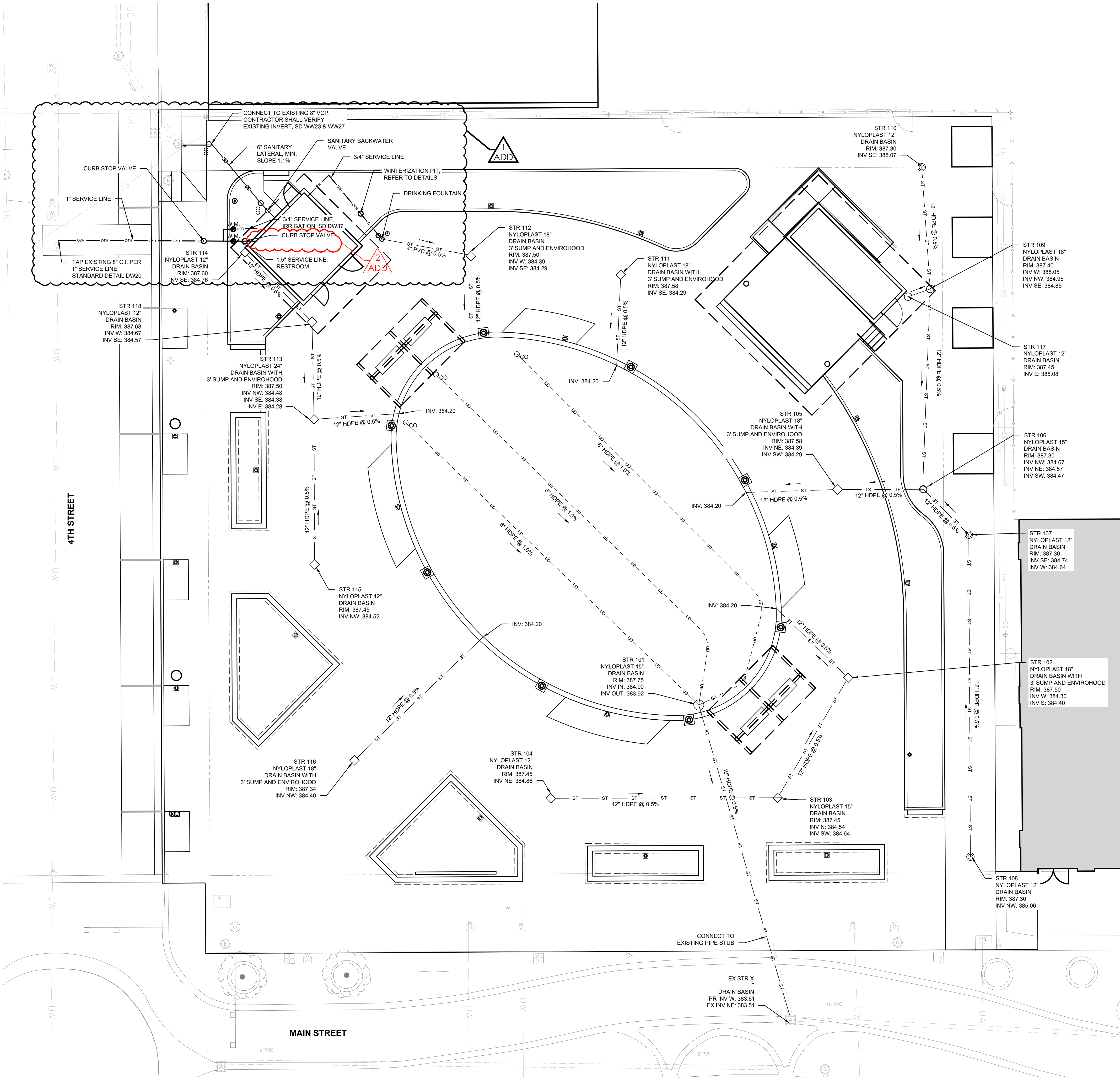
LA103

GENERAL UTILITY NOTES:

- THE UTILITIES SHOWN HEREIN HAVE BEEN LOCATED FROM FIELD SURVEY INFORMATION AND RECORD DRAWINGS. THE ENGINEER MAKES NO GUARANTEE THAT THE UTILITIES SHOWN COMPRISE ALL SUCH UTILITIES IN THE AREA, EITHER IN SERVICE OR ABANDONED. FURTHERMORE, THE ENGINEER DOES NOT WARRANT THAT THE UTILITIES SHOWN ARE IN THE EXACT LOCATION INDICATED, ALTHOUGH HE DOES CERTIFY THAT THEY ARE LOCATED AS ACCURATELY AS POSSIBLE FROM THE INFORMATION AVAILABLE.
- THE CONTRACTOR SHALL BE RESPONSIBLE FOR OBTAINING, OR VERIFYING, THAT ALL PERMITS AND APPROVALS ARE OBTAINED FROM THE RESPECTIVE CITY, COUNTY, AND STATE AGENCIES PRIOR TO STARTING CONSTRUCTION.
- IT SHALL BE THE CONTRACTOR'S RESPONSIBILITY TO DETERMINE THE EXACT LOCATION OF ALL EXISTING UTILITIES IN THE VICINITY OF THE CONSTRUCTION AREA PRIOR TO STARTING CONSTRUCTION.
- IT SHALL BE THE CONTRACTOR'S RESPONSIBILITY TO NOTIFY AND COORDINATE WITH LOCAL AND PRIVATE UTILITIES FOR NECESSARY UTILITY RELOCATIONS.
- IT SHALL BE THE CONTRACTOR'S RESPONSIBILITY TO MAINTAIN QUALITY CONTROL THROUGHOUT THE PROJECT. FAILURE TO DO SO MAY RESULT IN REMOVAL AND REPLACEMENT OF THE DEFECTIVE WORK.
- IT IS ESSENTIAL THAT THE WORK TO BE DONE IN CONJUNCTION WITH THIS PROJECT SHALL BE INSTALLED ACCORDING TO THESE SPECIFICATIONS. IT IS NECESSARY TO OBTAIN APPROVAL AND ACCEPTANCE BY THE CITY THAT CONSTRUCTION WAS DONE IN COMPLIANCE WITH THESE PLANS AND SPECIFICATIONS.
- ALL QUANTITIES GIVEN ON THE PRINTS, VERBALLY, OR IN THE SCOPE OF WORK SECTION ARE ESTIMATES AND SHALL BE CONFIRMED BY THE BIDDING CONTRACTOR.
- OCCUPATIONAL SAFETY AND HEALTH ADMINISTRATION (OSHA) STANDARDS FOR EXCAVATION, FINAL RULE 29 CFR, PART 1926, SUBPART "P" APPLIES TO ALL EXCAVATIONS EXCEEDING FIVE (5) FEET IN DEPTH.
- ACTUAL FIELD LOCATIONS OF ALL THE EXISTING UTILITIES ARE THE RESPONSIBILITY OF THE CONTRACTOR AND MUST BE LOCATED EITHER BY THE REPRESENTATIVE OF THE LOCAL UTILITY COMPANY OR BY A PRIVATE UNDERGROUND UTILITY LOCATION COMPANY PRIOR TO THE START OF EXCAVATING. VERIFY MINIMUM COVER REQUIREMENTS BY THE UTILITY CONTRACTOR OR CONTRACTORS, OR AGENCIES, WHICHEVER UTILITY COMPANY OR AGENCIES, THAT HAS JURISDICTION, SO NOT TO CAUSE DAMAGE.
- IT IS THE RESPONSIBILITY OF THE CONTRACTOR TO NOTIFY ALL THE UTILITY COMPANIES AND DEPARTMENTS 72 HOURS BEFORE CONSTRUCTION IS TO START TO VERIFY ANY UTILITIES THAT MAY BE PRESENT ON THE SITE. ALL VERIFICATIONS, LOCATIONS, SIZES, AND DEPTHS SHALL BE MADE BY THE APPROPRIATE UTILITY COMPANIES OR DEPARTMENTS. WHEN EXCAVATING AROUND OR OVER EXISTING UTILITIES, THE CONTRACTOR MUST NOTIFY THE UTILITY COMPANY SO A REPRESENTATIVE OF THE UTILITY COMPANY CAN BE PRESENT DURING THE EXCAVATION TO INSTRUCT AND OBSERVE DURING THE EXCAVATION.
- PIPE LENGTHS SHOWN ARE MEASURED FROM CENTER-TO-CENTER OF STRUCTURES ROUNDED TO THE NEAREST FOOT.
- WHERE GRADE MODIFICATIONS (CUT OR FILL) ARE SHOWN ADJACENT TO EXISTING VALVE BOX COVERS AND MANHOLE CASTINGS, THE VALVE BOX COVERS AND MANHOLE CASTINGS SHALL BE ADJUSTED FLUSH WITH THE PROPOSED GRADE.
- PAVEMENTS, WALKS, CURBS, AND OTHER SURFACE IMPROVEMENTS REQUIRING REMOVAL FOR INSTALLATION OF UNDERGROUND UTILITIES SHALL BE RESTORED TO THEIR PRESENT CONDITIONS UNLESS OTHERWISE SHOWN.
- THE CONTRACTOR SHALL MAINTAIN ALL FLOWS AND UTILITY CONNECTIONS TO EXISTING BUILDINGS, STRUCTURES, AND FACILITIES WITHOUT INTERRUPTION UNLESS UNTIL AUTHORIZED TO DISCONNECT BY THE OWNER, UTILITY COMPANY, AND/OR GOVERNING AUTHORITY. THE CONTRACTOR SHALL INSTALL AS NECESSARY TEMPORARY SITE LIGHTING, GAS, SANITARY, WATER, STORM, ELECTRIC, TELEPHONE, AND CABLE SERVICES TO SERVICE BUILDINGS INDICATED TO REMAIN OPEN.
- THE CONTRACTOR SHALL PROVIDE ALL BENDS, FITTINGS, ADAPTERS, ETCETERA AS REQUIRED FOR PIPE CONNECTIONS TO FACILITY STUB OUTS.
- CAP STUBS AND PROVIDE FIELD MARKERS.
- SANITARY BACKWATER VALVE SHALL BE RECTORSEAL 97026 CLEAN CHECK 6" PVE EXTENDABLE BACKWATER VALVE OR APPROVED EQUAL.
- ALL PROPOSED STORM SEWER AND DRAINAGE APPURTENANCES SHALL BE IN CONFORMANCE WITH EVANSVILLE WATER AND SEWER UTILITY (EWSU) STANDARD DETAILS AND CHAPTER 13.04 OF THE VANDERBURGH COUNTY DRAINAGE ORDINANCE. DISCREPANCIES BETWEEN THE PLANS AND EWSU STANDARD DETAILS OR THE VANDERBURGH COUNTY ORDINANCE SHALL NOT ALLEVIATE THE CONTRACTOR FROM ADHERING TO THE REQUIREMENTS AS SET FORTH IN THE STANDARD DETAILS AND ORDINANCE.

CIVIL PLAN SYMBOLS AND ABBREVIATIONS:

BC	BOTTOM OF CURB	MEG	MATCH EXISTING GRADE
TC	TOP OF CURB	RIM	RIM ELEVATION
EX	EXISTING	FFE	FINISH FLOOR ELEVATION
PR	PROPOSED		
— HD —	WATER LINE	— ST —	STORM SEWER
— SAN —	SANITARY SEWER	— UGE —	UNDERGROUND ELECTRIC
— UD —	UNDERDRAIN	— OW —	OVERHEAD WIRE
— UT —	UNDERGROUND COMMUNICATION LINE	— GAS —	GAS LINE
● (724.50)	EXISTING SPOT ELEVATION (VERIFY)	— 781 —	EXISTING CONTOUR LINE
— 781.80 —	PROPOSED SPOT ELEVATION	● 781	PROPOSED CONTOUR LINE
1.0%	PROPOSED SLOPE	— GB —	GRADE BREAK
WM	WATER METER	— X ST —	ABANDON STORM LINE
WV	WATER VALVE	— ST —	STORM STRUCTURE
CO	CLEANOUT	— DI —	AREA DRAIN, INLET
SA	SANITARY MANHOLE		



4TH AND MAIN PARK



IFB-508-06-2025
DOWNTOWN
EVANSVILLE, INDIANA

HAFER
architects • designers • engineers

21 SE Third Street,
Suite 800
Evansville, IN 47708
T: 812.422.4187
F: 812.421.6776
www.hafersdesign.com

In association with:

URBAN PLANNING/LANDSCAPE ARCHITECTURE/CIVIL ENGINEERING

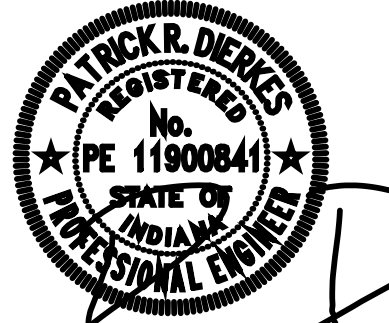
REA RUNDELL
ERNSTBERGER
ASSOCIATES

618 E. Market St. Indianapolis, IN. 46202

STRUCTURAL ENGINEERING

JQOL
QUALITY OF LIFE™

8440 Allison Pointe Blvd Suite 425 Indianapolis, IN. 46250



Revisions:

#	Description	Date
01	ADDENDUM # 01	09/19/2025
02	ADDENDUM # 02	09/24/2025

Designed By: LW/PA	Drawn By: LW/TJ	Checked By: PA
-----------------------	--------------------	-------------------

The drawings, specifications and other documents, including those in electronic form prepared by Hafer for this project are instruments of Service, and may be used solely with respect to this project. The documents may not be reproduced or modified by a third party without first obtaining the express written consent of Hafer. Authorized use of electronic media or file does not guarantee that these files contain complete and accurate information. In order to insure the accuracy of the information contained and that no changes or modifications have been made, these files must be compared to the project's contract documents with stamped and sealed certification and applicable approved modifications.

Sheet title:

SITE UTILITIES PLAN

Architect's Project No: Date:

2024-183 September 2025

Drawing No:

U101



0' 5' 10' 20'
SCALE: 1" = 10'



IFB-508-06-2025
DOWNTOWN
EVANSVILLE, INDIANA

21 SE Third Street,
Suite 600
Evansville, IN 47708
T: 812.422.4187
F: 812.421.6776
www.hafersdesign.com

HAFER
architects • designers • engineers

In association with:

URBAN PLANNING/LANDSCAPE ARCHITECTURE/CIVIL ENGINEERING

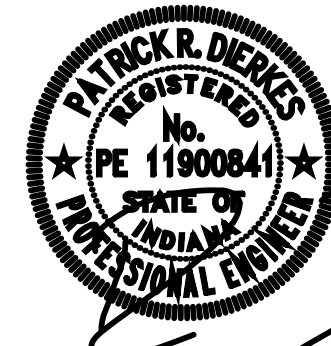
REA **RUNDELL**
ERNSTBERGER
ASSOCIATES

618 E. Market St. Indianapolis, IN. 46202

STRUCTURAL ENGINEERING

JQOL
QUALITY OF LIFE™

8440 Allison Points Blvd Suite 425 Indianapolis, IN. 46250



Revisions:

#	Description	Date
01	ADDENDUM # 01	09/19/2025
02	ADDENDUM # 02	09/24/2025

Designed By: LW/PA Drawn By: LW/TJ Checked By: PA

The drawings, specifications and other documents, including those in electronic form prepared by Hafer for this project are instruments of Service, and may be used solely with respect to this project. The documents may not be reproduced or modified by a third party without first obtaining the express written consent of Hafer. Authorized use of electronic media or file does not guarantee that these files contain complete and accurate information. In order to insure the accuracy of the information contained and that no changes or modifications have been made, these files must be compared to the project's contract documents with stamped and sealed certification and approved modification.

Sheet title:

**SITE UTILITY
DETAILS**

Architect's Project No:

Date:

2024-183

September 2025

Drawing No:

U201

EWSU WATER SERVICES - GENERAL NOTES:

- Contractor shall comply with all local, state and federal codes, ordinances, rules, regulations, orders and other legal requirements of municipal authorities which bear on the performance of the work, which may not be recognized on the approved plan set.
- The contractor is cautioned that the location and / or elevation of existing utilities, as shown on these plans, is based on records of various utility companies, and where possible measurements taken in the field. The information is not to be relied on as being exact or complete. The contractor must contact the appropriate utility company at least 48 hours before any excavation to request exact field location of utilities. Contractor shall locate existing utilities and establish elevations and clearances with proposed improvements prior to initiating construction. Indiana underground utility locate service (IUPSS) phone: 811.
- Material specifications shall be in conformance with applicable portions of the IDEM standard specifications, (latest edition) unless specifically stated otherwise on these plans, contract documents, or EVSU Water and Sewer Manual.
- All water service taps shall be witnessed by an EVSU Inspector. The contractor is to provide a minimum of 48-hour notice to Inspector (812-708-0502) before construction commences.
- Minimum of 18 inch vertical and 10 feet horizontal clearance to be maintained between water lines and sewer lines. Minimum separation between any water services shall be four feet, as measured from outside of pipe to outside of pipe.
- Any required easement shall be recorded and provided prior to start of construction.
- Taps shall be installed at the approved plan locations. Any desired location changes shall be approved by the EVSU utility inspector. Taps are not to be made within four feet of any other tap or fitting. No taps shall be made within two feet of any pipe joint.
- No services to be installed within eight feet of any side property line. All service lines from main to property line valve or meter shall run perpendicular to the main. Deflections of service line shall only occur after the EVSU property line valve or meter.
- For Gate Valve operating nuts that are going to be deeper than five feet, Contractor shall provide stainless steel extensions.
- Any water use for interior fire protection or irrigation purposes shall be identified to EVSU prior to implementation for verification of proper Backflow Prevention.
- (PROJECT SPECIFIC) Owner/Developer/Applicant/Contractor shall secure a Street Cut permit through the City of Evansville Engineer's office (812-436-4973) for the work to be performed in the public road or alley right-of-way.
- CALL BEFORE YOU DIG - BURIED LINE LOCATION - CALL 811.

EWSU WATER SERVICES - PROJECT SPECIFIC NOTES:

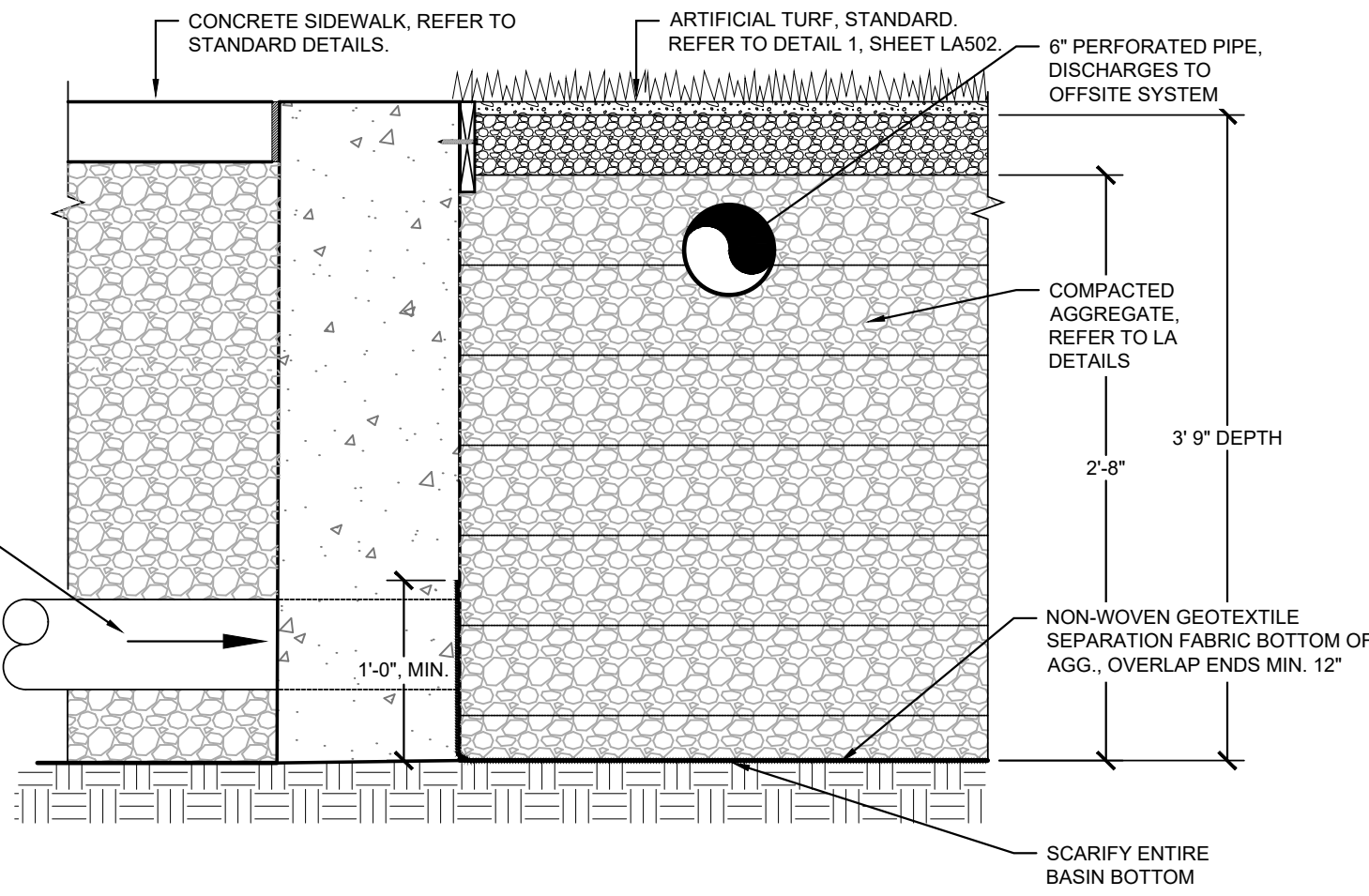
- (Notification to Start Job) Notify Inspector (812-708-0506) with the Evansville Water and Sewer Utility 48 Hours prior to start of any service construction. Coordinate with EVSU Inspector for all EVSU system interactions. All taps shall be witnessed by the Utility.
- Disclose all of the uses for the proposed 1" domestic service. Backflow protection is required for all Cross Connections. Cross Connection is any physical arrangement whereby a public water supply is connected, directly or indirectly, with any secondary water supply system, sewer, drain, conduit, pool, storage reservoir, plumbing fixture, or other device which contains or may contain any water, contaminated liquid, or other waste of unknown or unsafe quality that could impart a contaminant or pollutant to the drinking water as a result of backflow caused by backpressure or back siphonage.
- Owner/Developer/Applicant/Contractor shall secure a Construction Permit or Street Cut Permit through the City of Evansville Engineer's office (812-436-4973) for the work to be performed in the public road or alley right-of-way.
- CALL BEFORE YOU DIG - BURIED LINE LOCATION - CALL 811.

EWSU SANITARY SEWER TAP/CONNECTION - GENERAL NOTES:

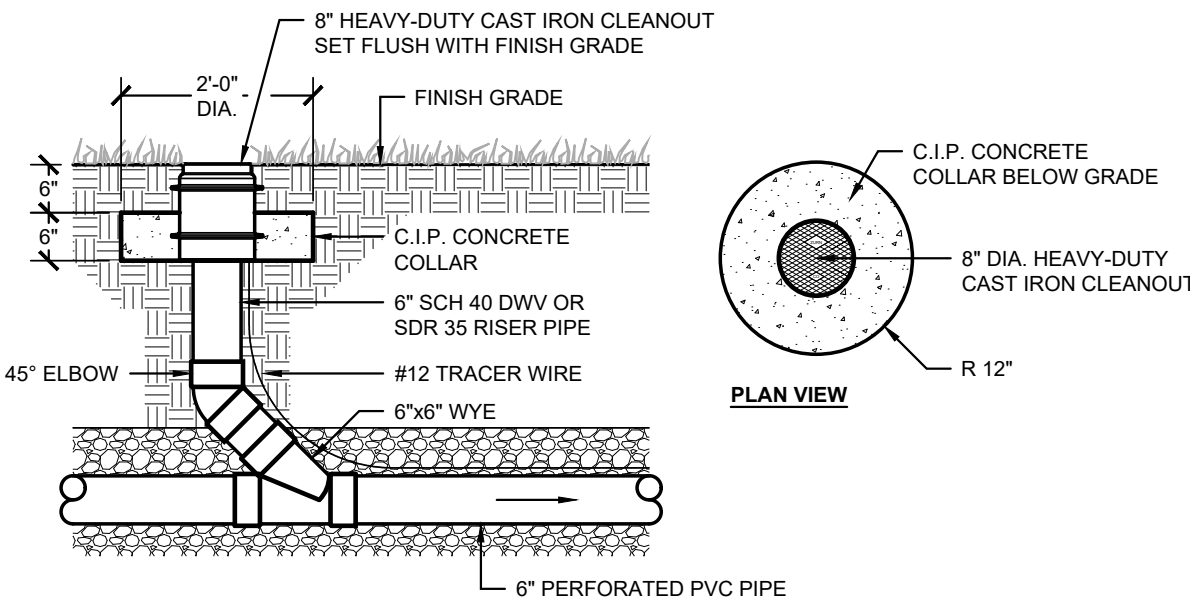
- The Licensed Contractor Plumber (Contractor) shall comply with all local, state and federal codes, ordinances, rules, regulations, orders and other legal requirements of municipal authorities which bear on the performance of the work, which may not be recognized on the approved plan set.
- The Contractor is cautioned that the location and/or elevation of existing utilities, as shown on these plans, is based on records of various utility companies, and where possible measurements taken in the field. The information is not to be relied on as being exact or complete. The Contractor must contact the appropriate utility company at least 48 hours before any excavation to request exact field location of utilities. Contractor shall locate existing utilities and establish elevations and clearances with proposed improvements prior to initiating construction. Indiana underground utility locate service (IUPSS) phone: 811.
- Material specifications shall be in conformance with applicable portions of the IDEM standard specifications, (latest edition) unless specifically stated otherwise on these plans, contract documents, or EVSU water and sewer manual.
- All sanitary sewer tap/connections shall be witnessed by an EVSU Inspector. The Contractor is to provide a minimum of 48 hour notice to Len VII (812-305-7514) before construction commences.
- Minimum of 18 inch vertical and 10 feet horizontal clearance to be maintained between water lines and sewer lines. Minimum depth of cover for sanitary sewer laterals is 3 feet to top of pipe.
- Any required easement shall be recorded and provided prior to start of construction.
- Taps shall be installed at the approved plan locations. Any desired location changes shall be approved by the EVSU Utility Inspector. Taps not to be made within 6 feet of any other tap. No taps or laterals to be made within 3 feet of any property line. No taps or laterals to be made within 6 feet of any utility pole or component.
- Bypass pumping and/or other methods may be necessary to complete the tapping of the existing sanitary sewers. The Contractor is responsible for adhering to the Evansville Sewer Overflow Response Plan (SORP) as it has to do with sewer overflow responsibilities.
- (PROJECT SPECIFIC) Owner/Developer/Applicant/Contractor shall secure a Construction or Road Cut Permit through the City of Evansville engineer's office (812-436-4973) for the work to be performed in the public road or alley right-of-way.

EWSU SANITARY SEWER TAP/CONNECTION - PROJECT SPECIFIC NOTES:

- (Notification to Start Job) Notify Len VII (812-305-7514) with the Evansville Water and Sewer Utility 48 Hours prior to start of any sewer tap or connection construction. All tap/connections shall be witnessed by the Utility.
- Contractor to excavate for the existing 8" VCP main. The Contractor shall be prepared with video inspection capabilities for the EVSU Inspector to assess the viability of reuse of the main. If reusable, then install an EWSU cleanout (Detail WW-23) just behind the public sidewalk. If NOT reusable, then remove the lateral connection per Inspector's instructions and install new lateral connections/tap.
- Provide building finish floor elevations. If lowest plumbing rim elevations are not one foot above the upstream MH rim, provide sanitary backflow preventer on the private plumbing.
- Contractor may install horizontal bends, fittings, or transition sizes and materials only upstream from the EWSU cleanout, per plumbing code.
- Owner/Developer/Applicant/Contractor shall secure permits from the City of Evansville Engineer's office (812-436-4973) for the work to be performed in the public road or alley right-of-way.
- CALL BEFORE YOU DIG - BURIED LINE LOCATION - CALL 811.

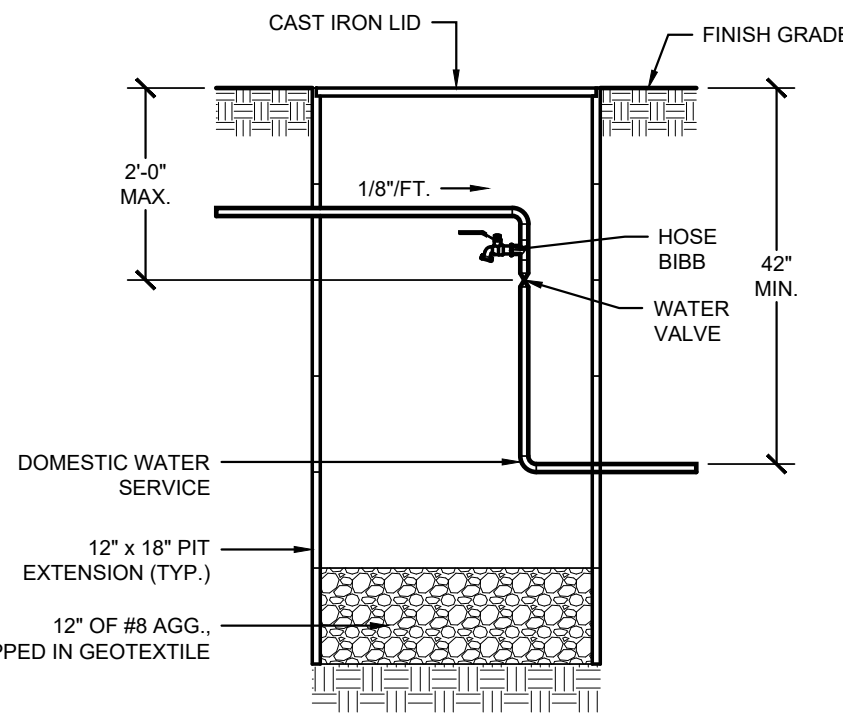


1 ARTIFICIAL TURF DETENTION AND DRAINAGE DETAIL
SCALE: 1" = 1'-0"

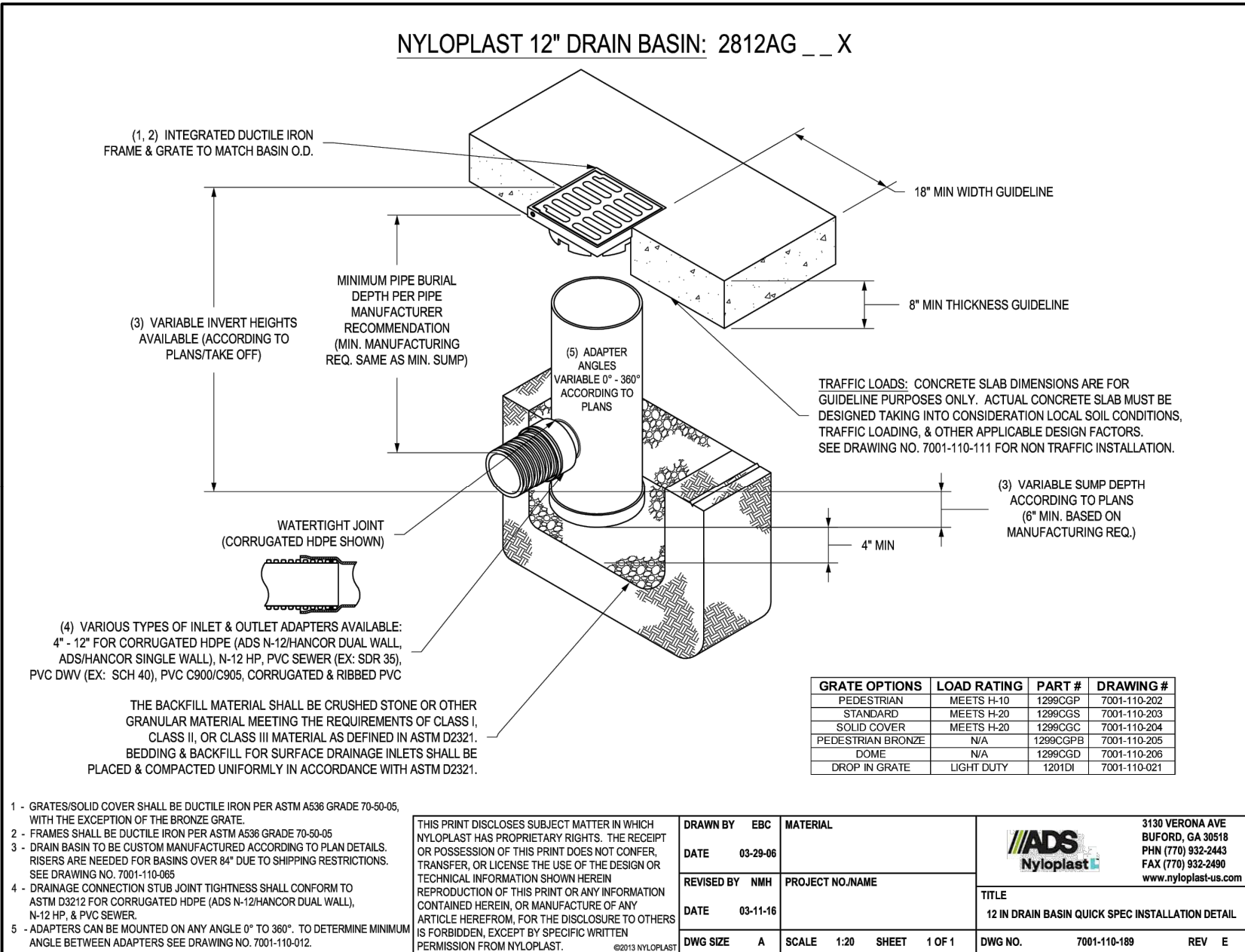


CLEANOUT IS REQUIRED AT EACH BEND THAT IS GREATER THAN 45-DEGREES.

2 SINGLE CLEANOUT, PERFORATED PIPE
SCALE: 1/2" = 1'-0"



4 DRINKING FOUNTAIN WINTERIZATION PIT DETAIL
NOT TO SCALE



GRATE OPTIONS	LOAD RATING	PART #	DRAWING #
PEDESTRIAN	MEETS F-20	1200CGR	7001-110-201
STANDARD	MEETS F-20	1200CGR	7001-110-201
SOLID COVER	MEETS F-20	1200CGR	7001-110-201
PEDESTRIAN SLOPE	N/A	1200CGR	7001-110-201
DRIP IN GRATE	LIGHT DUTY	1201GR	7001-110-201

TRAFFIC LOADS: CONCRETE SLAB DIMENSIONS ARE FOR GUIDELINE PURPOSES ONLY. ACTUAL CONCRETE SLAB MUST BE DESIGNED TAKING INTO CONSIDERATION LOCAL SOIL CONDITIONS, TRAFFIC LOADING, & OTHER APPLICABLE DESIGN FACTORS. SEE DRAWING NO. 7001-110-111 FOR NON TRAFFIC INSTALLATION.

THE BACKFILL MATERIAL SHALL BE CRUSHED STONE OR OTHER GRANULAR MATERIAL MEETING THE REQUIREMENTS OF CLASS I, CLASS II, OR CLASS III MATERIAL AS DEFINED IN ASTM D2221. BEDDING & BACKFILL FOR SURFACE DRAINAGE INLETS SHALL BE PLACED & COMPACTED UNIFORMLY IN ACCORDANCE WITH ASTM D2221.

1 - GRATES/SOLID COVER SHALL BE DUCTILE IRON PER ASTM A536 GRADE 70-60-15, WITH THE EXCEPTION OF THE BRONZE GRATE.

2 - FRAMES SHALL BE DUCTILE IRON PER ASTM A536 GRADE 70-60-15.

3 - DRAIN BASIN TO BE CUSTOM MANUFACTURED ACCORDING TO PLAN DETAILS. REINFORCING IS REQUIRED FOR BASINS OVER 8" DUE TO SHIPPING RESTRICTIONS. SEE DRAWING NO. 7001-110-100.

4 - DRAINAGE CONNECTION STUB JOINT THICKNESS SHALL CONFORM TO ASTM D2221 FOR CORRUGATED HDPE (ADS N-12/HANCOR DUAL WALL, N-12 HP, & PVC SEWER EX. SDR 35).

5 - ADAPTERS CAN BE MOUNTED ON ANY ANGLE 0° TO 90°. TO DETERMINE MINIMUM ANGLE BETWEEN ADAPTERS SEE DRAWING NO. 7001-110-111.

THIS PRINT DISCLOSES SUBJECT MATTER IN WHICH NYLOPLAST HAS PROPRIETARY RIGHTS. THE RECIPT OR POSSESSION OF THIS PRINT DOES NOT CONFER, TRANSFER, OR LICENSE THE USE OF THE DESIGN OR TECHNICAL INFORMATION SHOWN HEREIN. REPRODUCTION OF THIS PRINT OR ANY INFORMATION CONTAINED HEREIN, OR MANUFACTURE OF ANY ARTICLE HEREFROM FOR THE DISCLOSURE TO OTHERS, IS FORBIDDEN, EXCEPT BY SPECIFIC WRITTEN PERMISSION FROM NYLOPLAST.

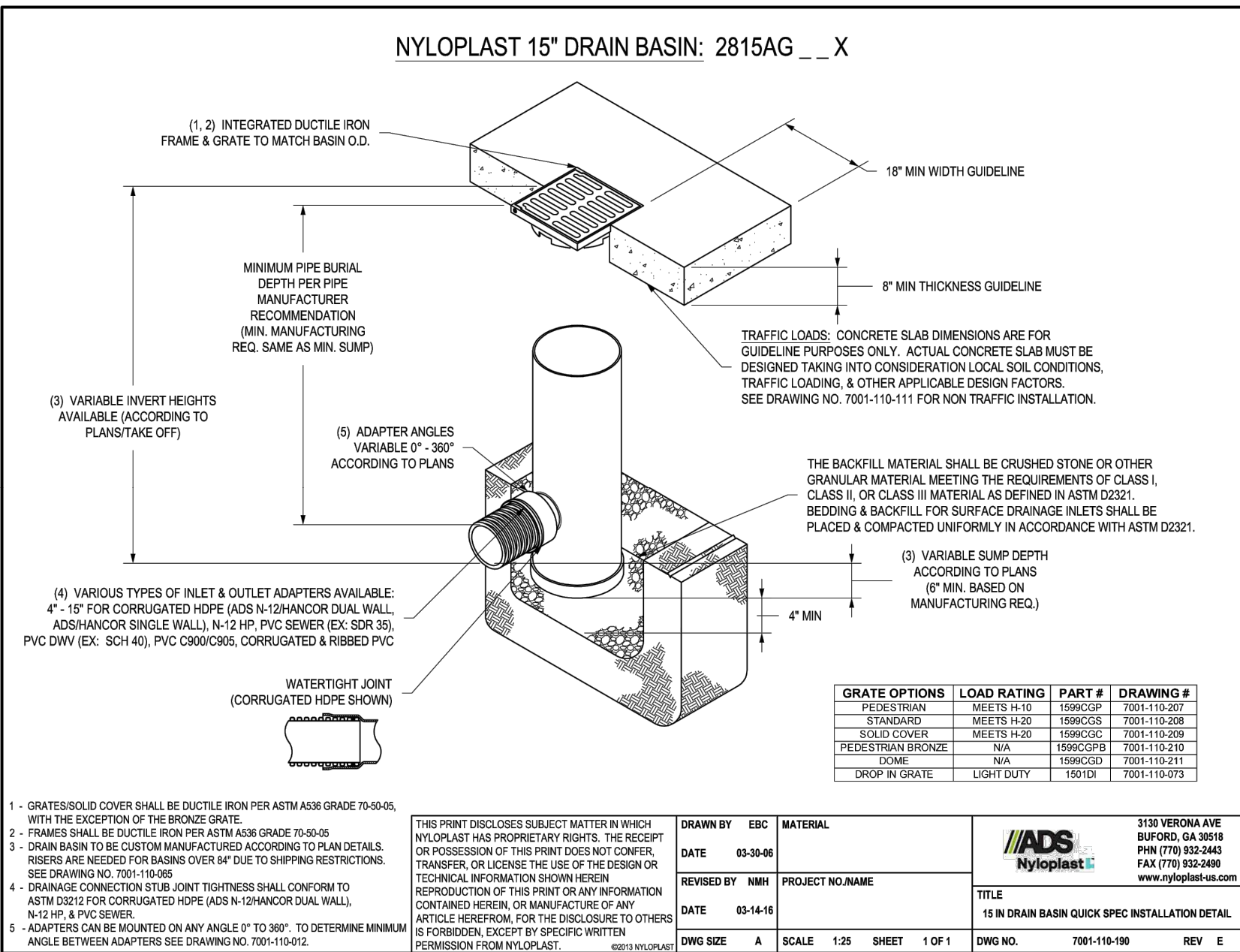
DRAWN BY: EBC DATE: 03-24-24 MATERIAL: NYLOPLAST

REVISED BY: MNH PROJECT NO: NAME

DATE: 03-14-24

DWG SIZE: A SCALE: 1:20 SHEET: 1 OF 1 DWG NO.: 7001-110-100 REV: E

TITLE: 12 IN DRAIN BASIN QUICK SPEC INSTALLATION DETAIL



GRATE OPTIONS	LOAD RATING	PART #	DRAWING #
PEDESTRIAN	MEETS F-20	1500CGR	7001-110-201
STANDARD	MEETS F-20	1500CGR	7001-110-201
SOLID COVER	MEETS F-20	1500CGR	7001-110-201
PEDESTRIAN SLOPE	N/A	1500CGR	7001-110-211
DRIP IN GRATE	LIGHT DUTY	1501GR	7001-110-211

TRAFFIC LOADS: CONCRETE SLAB DIMENSIONS ARE FOR GUIDELINE PURPOSES ONLY. ACTUAL CONCRETE SLAB MUST BE DESIGNED TAKING INTO CONSIDERATION LOCAL SOIL CONDITIONS, TRAFFIC LOADING, & OTHER APPLICABLE DESIGN FACTORS. SEE DRAWING NO. 7001-110-111 FOR NON TRAFFIC INSTALLATION.

THE BACKFILL MATERIAL SHALL BE CRUSHED STONE OR OTHER GRANULAR MATERIAL MEETING THE REQUIREMENTS OF CLASS I, CLASS II, OR CLASS III MATERIAL AS DEFINED IN ASTM D2221. BEDDING & BACKFILL FOR SURFACE DRAINAGE INLETS SHALL BE PLACED & COMPACTED UNIFORMLY IN ACCORDANCE WITH ASTM D2221.

1 - GRATES/SOLID COVER SHALL BE DUCTILE IRON PER ASTM A536 GRADE 70-60-15, WITH THE EXCEPTION OF THE BRONZE GRATE.

2 - FRAMES SHALL BE DUCTILE IRON PER ASTM A536 GRADE 70-60-15.

3 - DRAIN BASIN TO BE CUSTOM MANUFACTURED ACCORDING TO PLAN DETAILS. REINFORCING IS REQUIRED FOR BASINS OVER 8" DUE TO SHIPPING RESTRICTIONS. SEE DRAWING NO. 7001-110-100.

4 - DRAINAGE CONNECTION STUB JOINT THICKNESS SHALL CONFORM TO ASTM D2221 FOR CORRUGATED HDPE (ADS N-12/HANCOR DUAL WALL, N-12 HP, & PVC SEWER EX. SDR 35).

5 - ADAPTERS CAN BE MOUNTED ON ANY ANGLE 0° TO 90°. TO DETERMINE MINIMUM ANGLE BETWEEN ADAPTERS SEE DRAWING NO. 7001-110-111.

THIS PRINT DISCLOSES SUBJECT MATTER IN WHICH NYLOPLAST HAS PROPRIETARY RIGHTS. THE RECIPT OR POSSESSION OF THIS PRINT DOES NOT CONFER, TRANSFER, OR LICENSE THE USE OF THE DESIGN OR TECHNICAL INFORMATION SHOWN HEREIN. REPRODUCTION OF THIS PRINT OR ANY INFORMATION CONTAINED HEREIN, OR MANUFACTURE OF ANY ARTICLE HEREFROM FOR THE DISCLOSURE TO OTHERS, IS FORBIDDEN, EXCEPT BY SPECIFIC WRITTEN PERMISSION FROM NYLOPLAST.

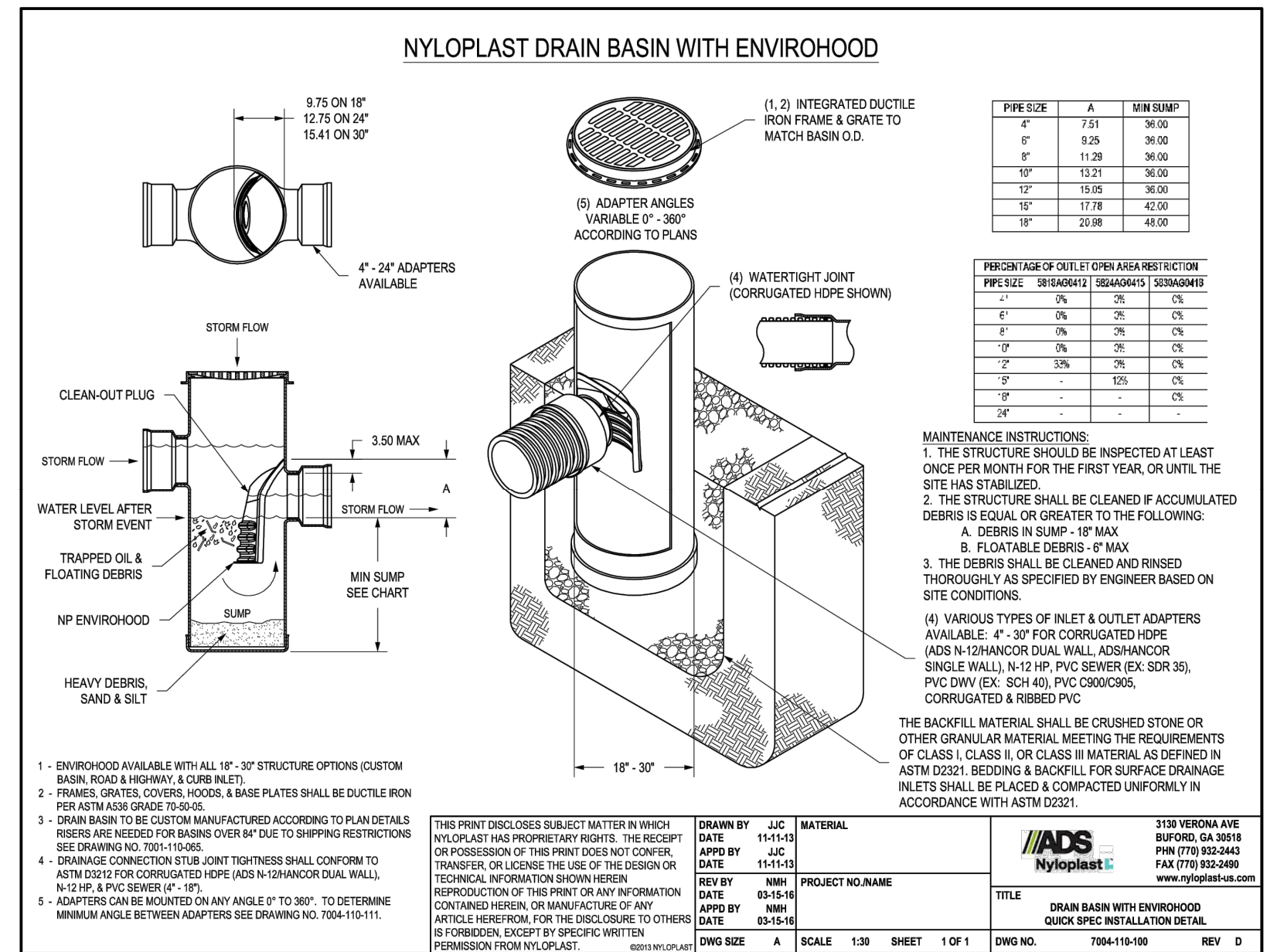
DRAWN BY: EBC DATE: 03-24-24 MATERIAL: NYLOPLAST

REVISED BY: MNH PROJECT NO: NAME

DATE: 03-14-24

DWG SIZE: A SCALE: 1:20 SHEET: 1 OF 1 DWG NO.: 7001-110-100 REV: E

TITLE: 15 IN DRAIN BASIN QUICK SPEC INSTALLATION DETAIL



PPE SIZE	A	MIN RAMP
4"	1.51	36.00
6"	2.29	36.00
8"	3.17	36.00
10"	4.05	36.00
12"	4.93	36.00
14"	5.81	42.00
16"	6.69	42.00
18"	7.57	42.00

PERCENTAGE OF OUTLET OVER AREA RESTRICTION

PPE SIZE	DESIGNER	DESIGNER	DESIGNER
4"	0%	25	0%
6"	0%	25	0%
8"	0%	25	0%
10"	0%	25	0%
12"	0%	25	0%
14"	0%	25	0%
16"	0%	25	0%
18"	0%	25	0%

MAINTENANCE INSTRUCTIONS:

- THE STRUCTURE SHOULD BE INSPECTED AT LEAST ONCE PER MONTH FOR THE FIRST YEAR, OR UNTIL THE SITE HAS STABILIZED.
- THE STRUCTURE SHALL BE CLEANED IF ACCUMULATED DEBRIS IS EQUAL OR GREATER TO THE FOLLOWING:
 - DEBRIS IN SLUMP - 18" MAX
 - FLATABLE DEBRIS - 8" MAX
 - THE DEBRIS SHALL BE CLEANED AND RINSED THOROUGHLY AS SPECIFIED BY ENGINEER BASED ON SITE CONDITIONS.
- VARIOUS TYPES OF INLET & OUTLET ADAPTERS AVAILABLE: 4" - 30" FOR CORRUGATED HDPE (ADS N-12/HANCOR DUAL WALL, ADS N-12 HP, & PVC SEWER EX. SDR 35), CORRUGATED & RIBBED PVC.

THE BACKFILL MATERIAL SHALL BE CRUSHED STONE OR OTHER GRANULAR MATERIAL MEETING THE REQUIREMENTS OF CLASS I, CLASS II, OR CLASS III MATERIAL AS DEFINED IN ASTM D2221. BEDDING & BACKFILL FOR SURFACE DRAINAGE INLETS SHALL BE PLACED & COMPACTED UNIFORMLY IN ACCORDANCE WITH ASTM D2221.

1 - ENVIROHOOD AVAILABLE WITH ALL 18" - 30" STRUCTURE OPTIONS (CUSTOM BASIN, ROAD, LANDSCAPE, & CONCRETE).

2 - FRAMES SHALL BE DUCTILE IRON PER ASTM A536 GRADE 70-60-15.

3 - DRAIN BASIN TO BE CUSTOM MANUFACTURED ACCORDING TO PLAN DETAILS. REINFORCING IS REQUIRED FOR BASINS OVER 8" DUE TO SHIPPING RESTRICTIONS. SEE DRAWING NO. 7001-110-100.

4 - DRAINAGE CONNECTION STUB JOINT THICKNESS SHALL CONFORM TO ASTM D2221 FOR CORRUGATED HDPE (ADS N-12/HANCOR DUAL WALL, N-12 HP, & PVC SEWER EX. SDR 35).

5 - ADAPTERS CAN BE MOUNTED ON ANY ANGLE 0° TO 90°. TO DETERMINE MINIMUM ANGLE BETWEEN ADAPTERS SEE DRAWING NO. 7001-110-111.

THIS PRINT DISCLOSES SUBJECT MATTER IN WHICH NYLOPLAST HAS PROPRIETARY RIGHTS. THE RECIPT OR POSSESSION OF THIS PRINT DOES NOT CONFER, TRANSFER, OR LICENSE THE USE OF THE DESIGN OR TECHNICAL INFORMATION SHOWN HEREIN. REPRODUCTION OF THIS PRINT OR ANY INFORMATION CONTAINED HEREIN, OR MANUFACTURE OF ANY ARTICLE HEREFROM FOR THE DISCLOSURE TO OTHERS, IS FORBIDDEN, EXCEPT BY SPECIFIC WRITTEN PERMISSION FROM NYLOPLAST.

DRAWN BY: JAC DATE: 11-11-24 MATERIAL: NYLOPLAST

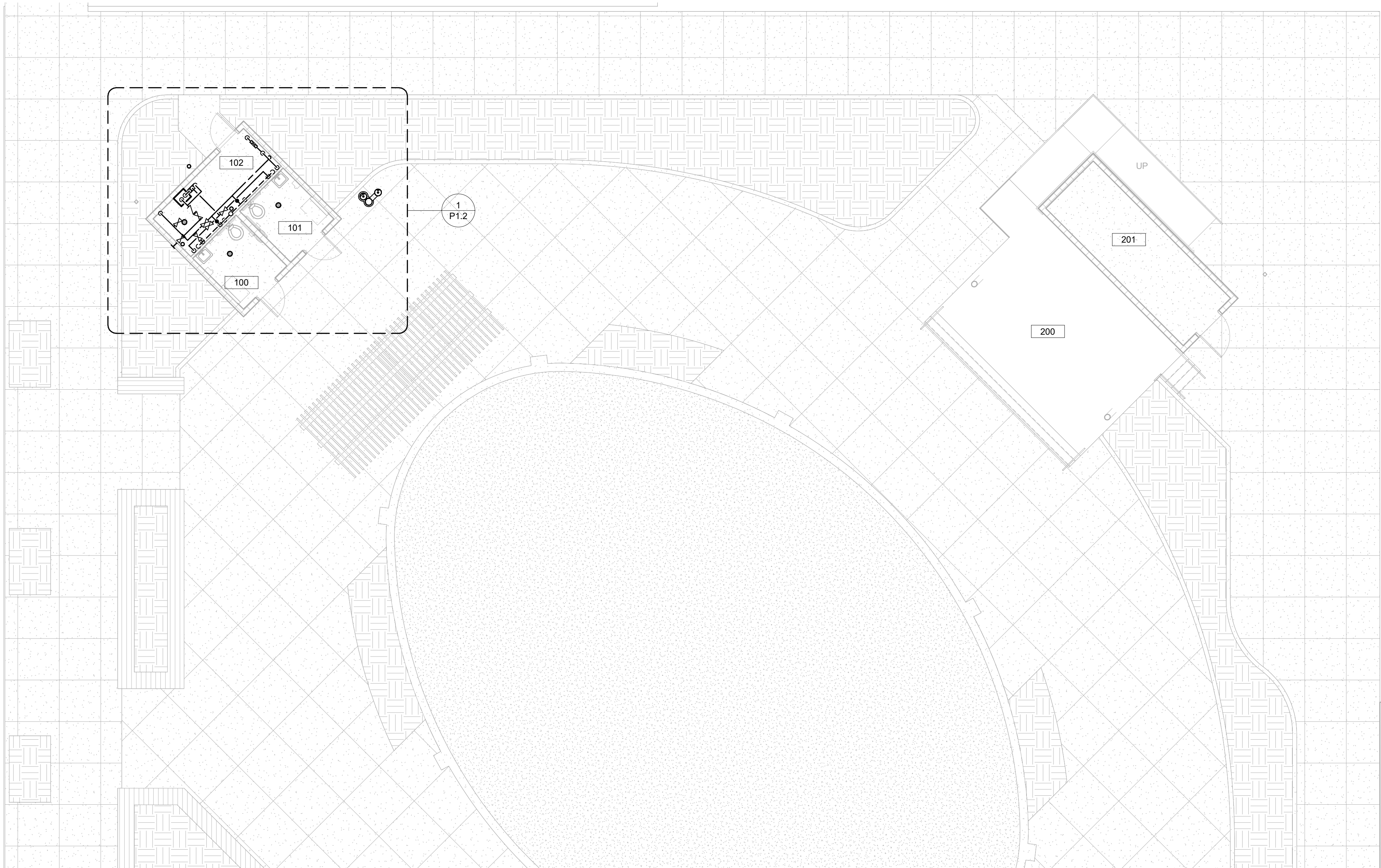
APPROVED BY: JAC DATE: 11-11-24

REVISED BY: MNH PROJECT NO: NAME

DATE: 03-14-24

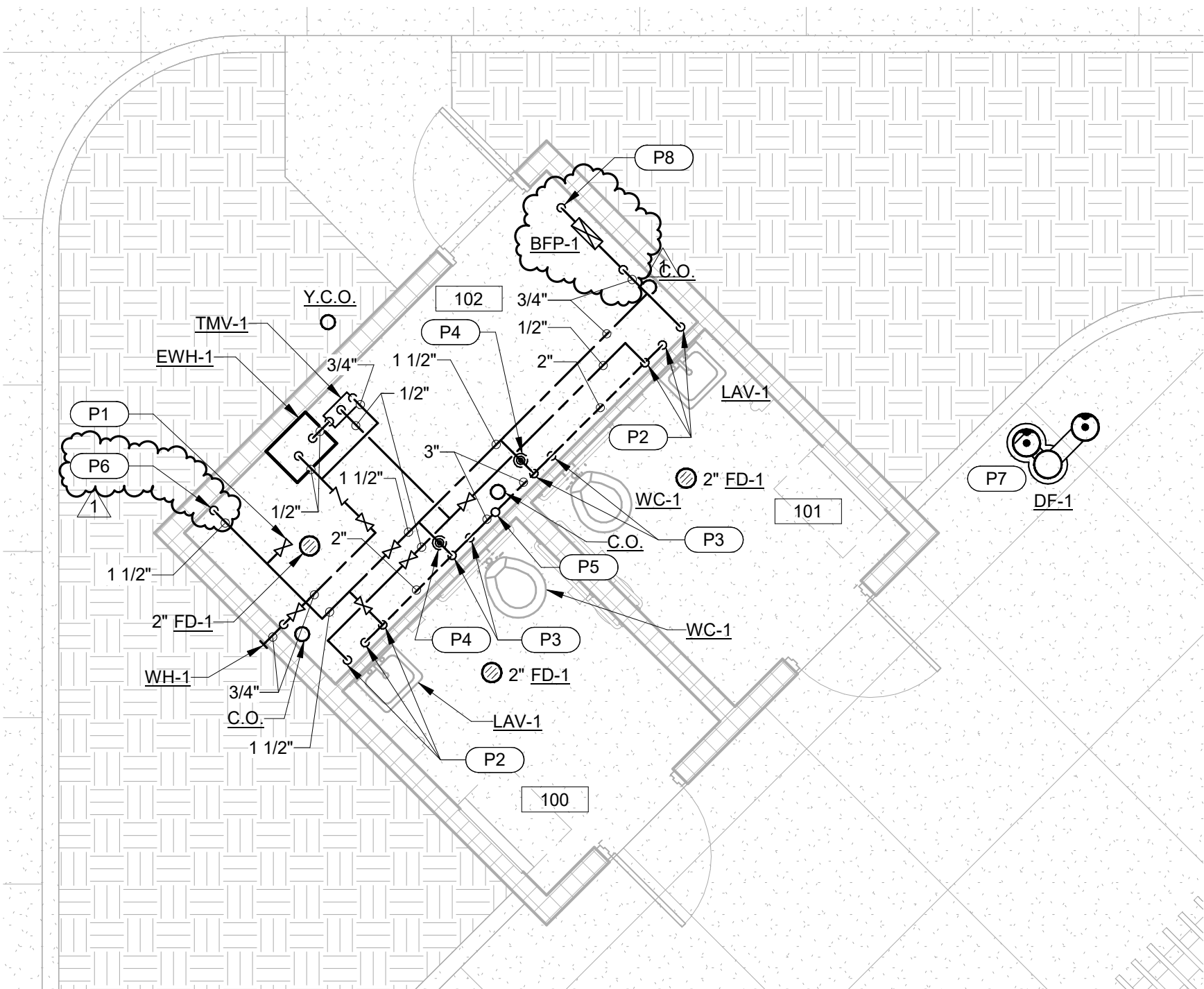
DWG SIZE: A SCALE: 1:20 SHEET: 1 OF 1 DWG NO.: 7001-110-100 REV: D

TITLE: DRAIN BASIN WITH ENVIROHOOD QUICK SPEC INSTALLATION DETAIL



FIRST FLOOR PLUMBING PLAN

1/8" = 1'-0"



1 RESTROOM BUILDING ENLARGED PLUMBING PLAN

1/4" = 1'-0"

GENERAL NOTES:

A. INSTALL DRAIN VALVES AT LOW POINTS IN DOMESTIC PIPING AS REQUIRED TO FULLY DRAIN DOMESTIC WATER SYSTEM FOR WINTERIZATION. SLOPE PIPING TO LOW POINTS AS REQUIRED.

PLAN NOTES:

- P1 PROVIDE A 1/2" VENT VALVE. SLOPE ALL WATER PIPING TO DRAIN BACK TO THE BUILDING SHUTOFF VALVE.
- P2 1/2" CW, 1/2" HW, & 1-1/2" VENT DROP TO FIXTURE.
- P3 1-1/2" CW & 2" VENT DROP TO FIXTURE.
- P4 PROVIDE WATER HAMMER ARRESTOR "A" IN ACCESSIBLE LOCATION IN CHASE.
- P5 3" VENT UP THROUGH ROOF.
- P6 1-1/2" CW DOWN. PROVIDE SHUTOFF VALVE 6" A.F.F. PROVIDE DRAIN DOWN VALVE DIRECTLY ABOVE SHUTOFF VALVE.
- P7 REFER TO CIVIL SITE PLANS FOR PIPE ROUTING TO DF-1.
- P8 3/4" CW DOWN.

4TH & MAIN PARK



4TH & MAIN STREET
DOWNTOWN
EVANSVILLE, INDIANA

HAFER

architects • designers • engineers

21 SE Third Street,
Suite 800
Evansville, IN 47708
T: 812.422.4187
F: 812.421.6776
www.hafersdesign.com

In association with:

URBAN PLANNING/LANDSCAPE ARCHITECTURE/CIVIL ENGINEERING

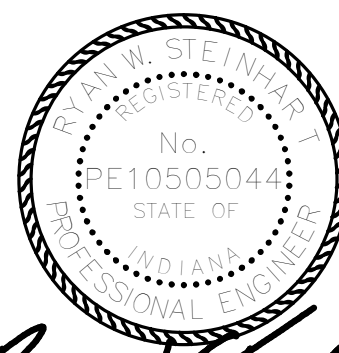
REA RUNDELL
ERNSTBERGER
ASSOCIATES

618 E. Market St. Indianapolis, IN. 46202

STRUCTURAL ENGINEERING

JQOL
QUALITY OF LIFE

8440 Allison Pointe Blvd Suite 425 Indianapolis, IN. 46250



Ryan W. Steinhart
08/28/2025

Revisions:

#	Description	Date
1	ADD - 002	09/24/2025

Designed By: CLB
Drawn By: CLB
Checked By: RWS

The drawings, specifications and other documents, including those in electronic form prepared by Hafer for this project are instruments of Service, and may be used solely with respect to this project. The documents may not be reproduced or modified by a third party without first obtaining the express written consent of Hafer. Authorized use of electronic media or file does not guarantee that these files contain complete and accurate information. In order to insure the accuracy of the information contained and that no changes or modifications have been made, these files must be compared to the project's contract documents with stamped and sealed certification and applicable approved modifications.

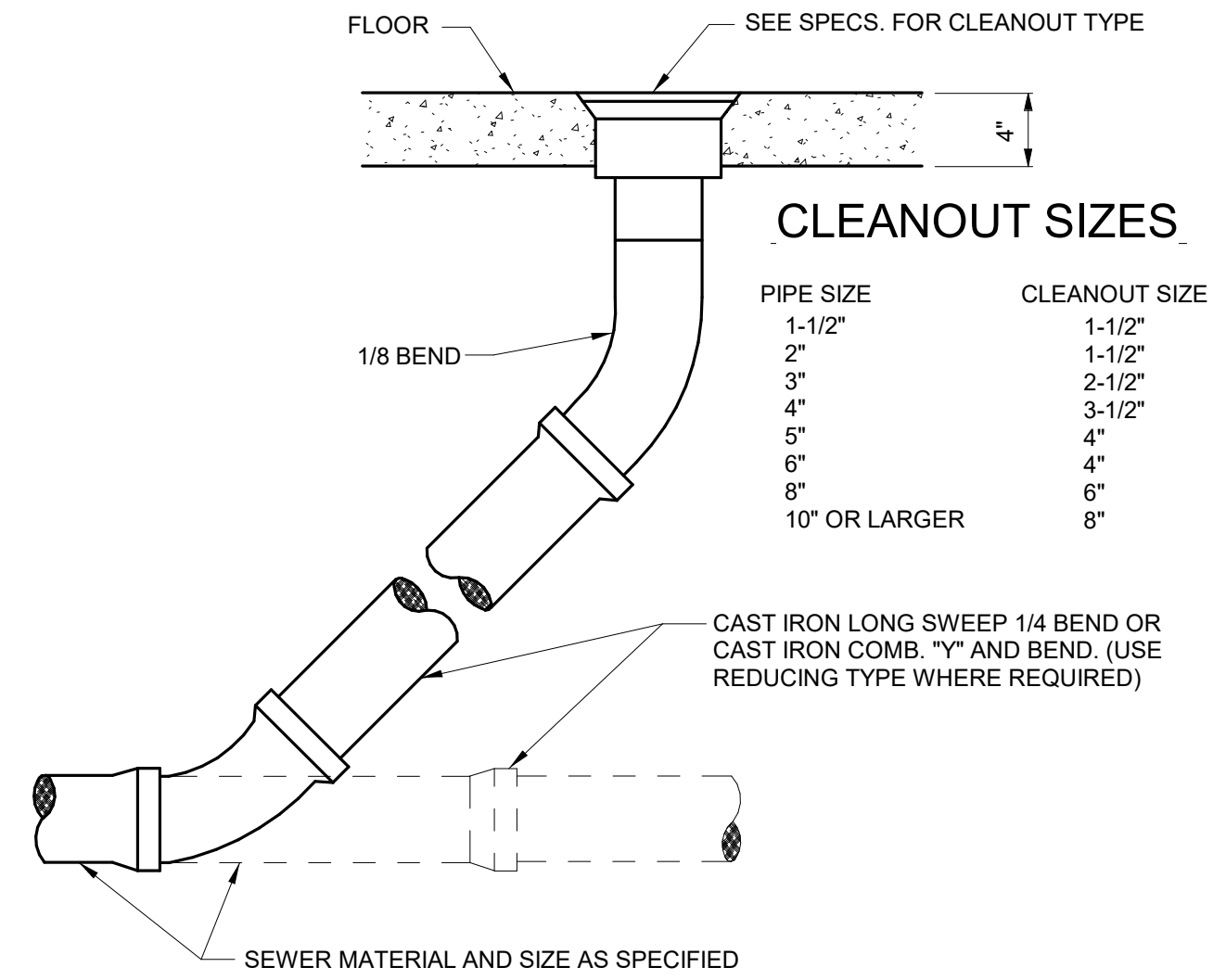
Sheet title:

FIRST FLOOR PLUMBING
PLAN

Architect's Project No: 2404-183
Date: August, 2025

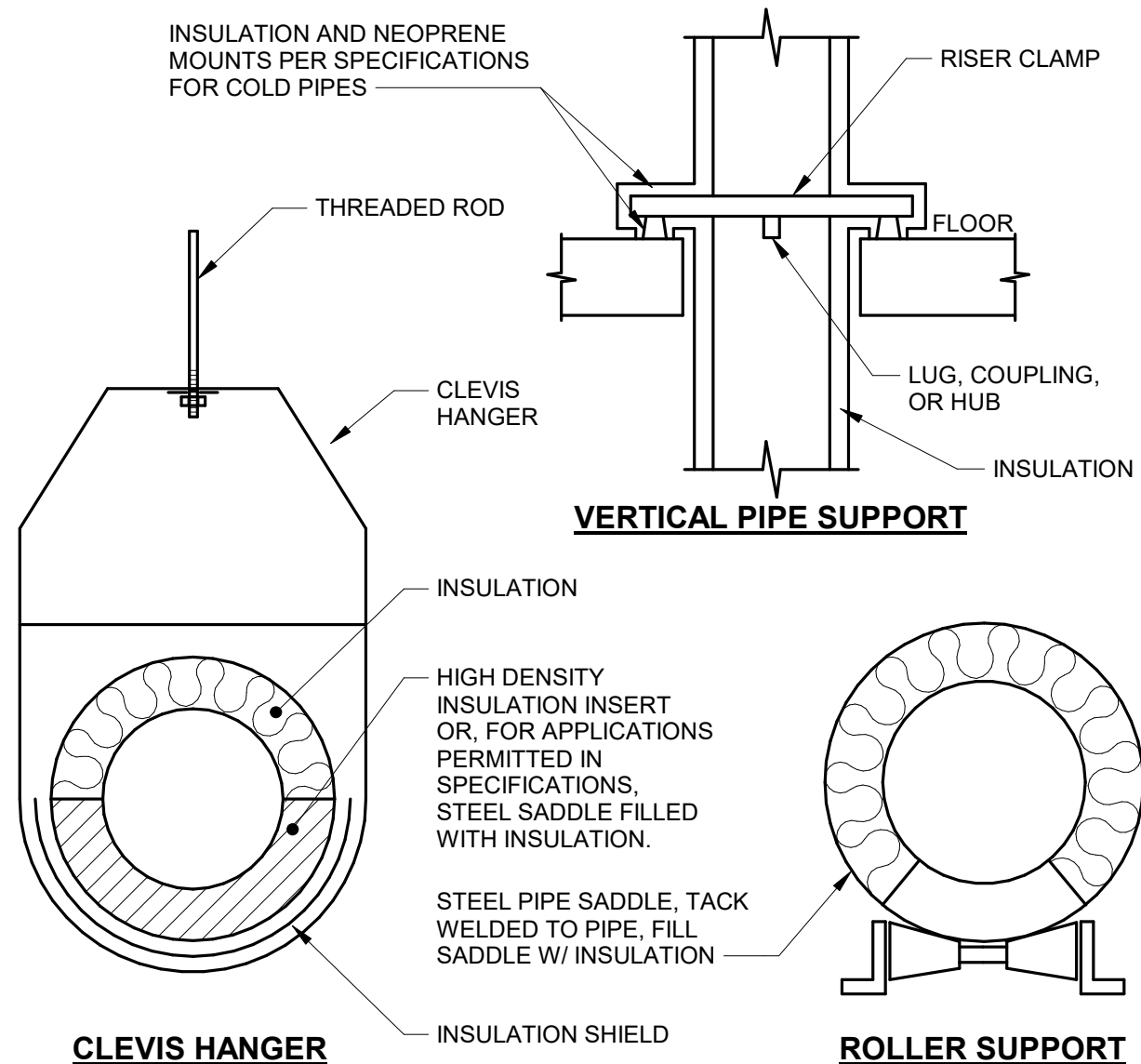
Drawing No:

P1.2



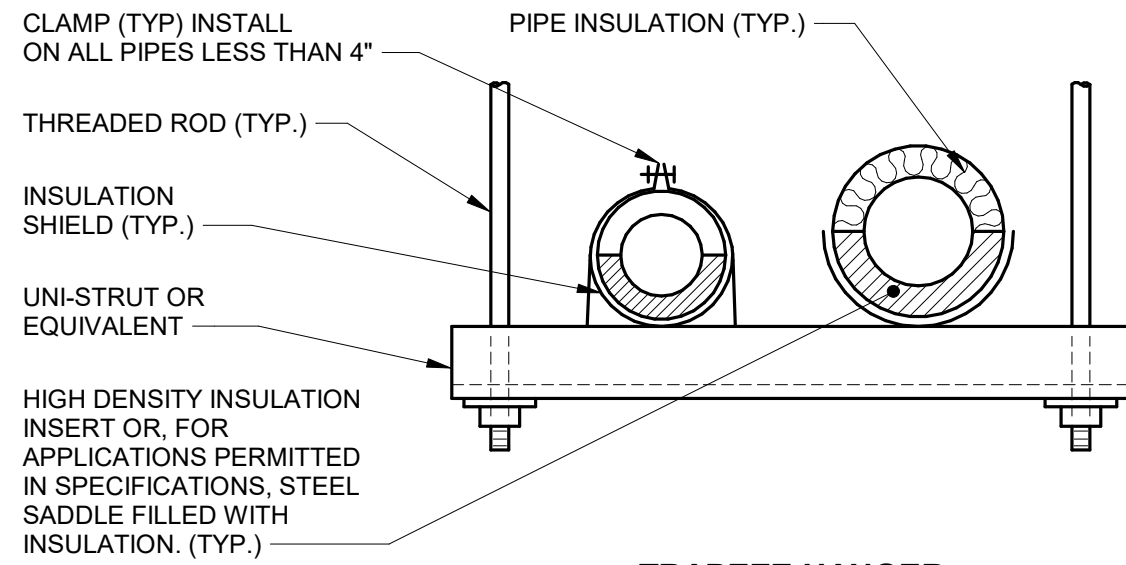
TYPICAL CLEANOUT DETAIL

NO SCALE

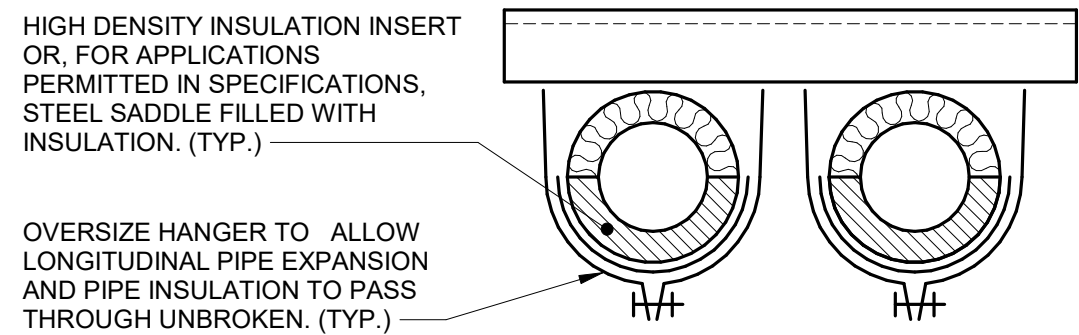


CLEVIS HANGER

ROLLER SUPPORT



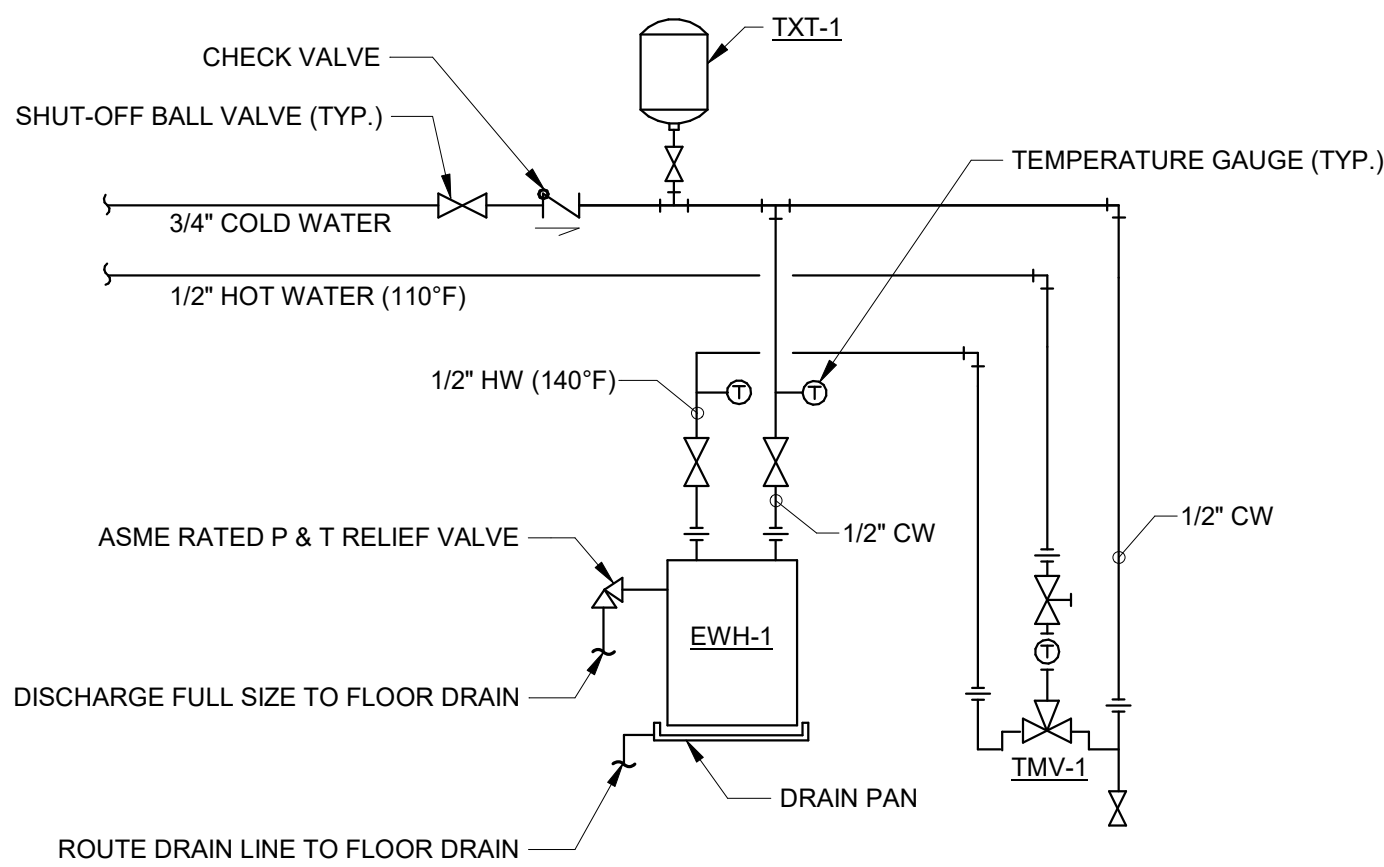
TRAPEZE HANGER



STRUT CLAMP HANGERS

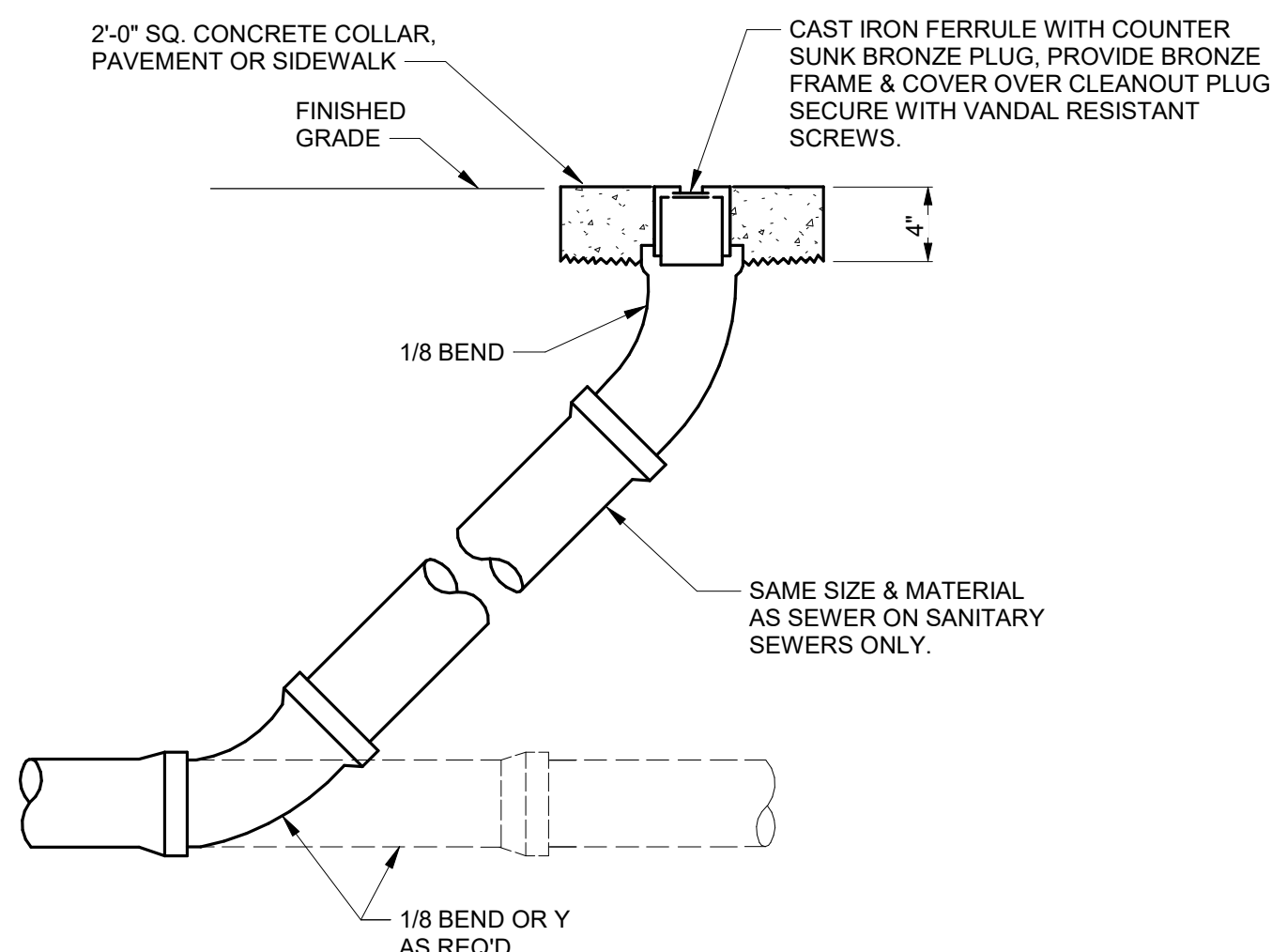
PIPE SUPPORT DETAILS

NO SCALE



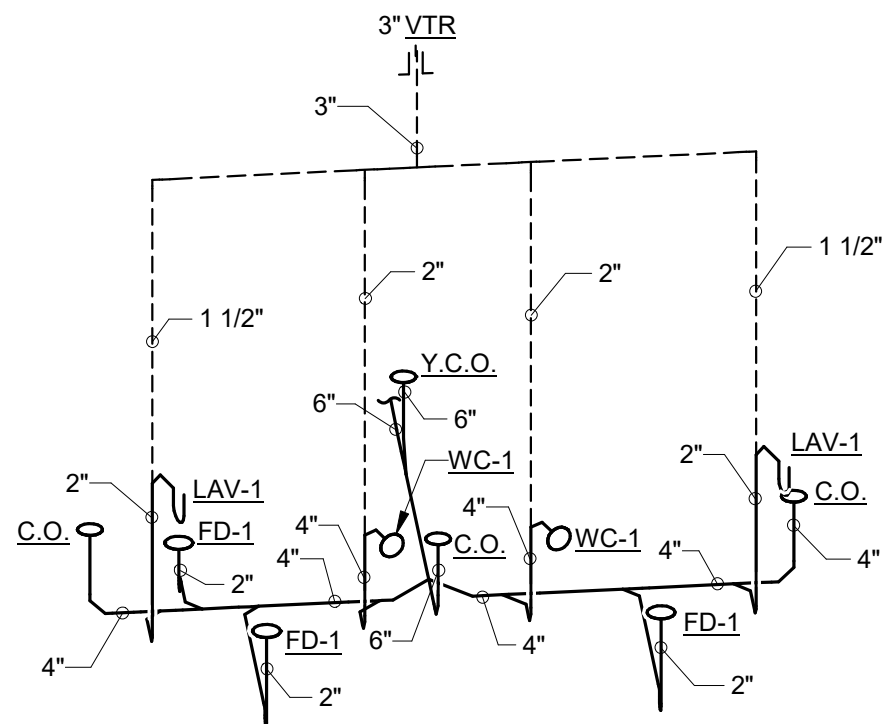
ELECTRIC WATER HEATER PIPING DETAIL

NO SCALE



TYPICAL YARD CLEANOUT DETAIL

NO SCALE



SANITARY RISER DIAGRAM

NO SCALE

MISCELLANEOUS EQUIPMENT SCHEDULE		
SYMBOL	DESCRIPTION	REMARKS
BFP-1	BACKFLOW PREVENTER - 3/4" REDUCED PRESSURE PRINCIPLE BACKFLOW PREVENTER, PROVIDE WITH TWO SHUTOFF BALL VALVES, TEST COCKS, AND A "Y" STRAINER. MOUNT BACKFLOW PREVENTER AT 24" A.F.F. PROVIDE AIR GAP FITTINGS AND ROUTE DRAIN TO FLOOR DRAIN.	BASED ON ZURN WILKINS MODEL 975XLUS
EWH-1	ELECTRIC WATER HEATER - 40 GPM @ 140°F, 90°F RISE, 120/1, 12 AMP, 1.44 KW. MOUNT THE WATER HEATER ON WALL SHELF AND PROVIDE ALL BRACKETS AND HARDWARE REQUIRED FOR A COMPLETE INSTALLATION. SET THE WATER HEATER FOR 140°F.	BASED ON AO SMITH MODEL EPU-4
TMV-1	THERMOSTATIC MIXING VALVE - 7 GPM @ 5 PSI PRESSURE DROP, MEETS ASSE 1017, SET AT 110° F. DIAL THERMOMETER ON DISCHARGE, SHUTOFF VALVES. SECURE TO WALL NEXT TO EWH-1. 1/2" INLETS, 1/2" OUTLET.	BASED ON LEONARD MODEL TA-LF-F
TXT-1	THERMAL EXPANSION TANK - NON-ASME REPLACEABLE BLADDER TYPE, PRECHARGED, 150 PSI MAXIMUM DESIGN PRESSURE, 3/4" STAINLESS STEEL SYSTEM CONNECTION, STANDARD TIRE VALVE CHARGING CONNECTION, 2.1 GALLON ACCEPTABLE VOLUME, SET TANK PRESSURE TO 50 PSI.	BASED ON WESSELS MODEL 5TX

FIXTURE FINAL CONNECTION SCHEDULE								
FIXTURE	COLD WATER	HOT WATER	WASTE	VENT	IPC 2006			REMARKS
					DFU	CWFU	HWFU	
2" FLOOR DRAIN	-	-	2"	-	2	-	-	
LAVATORY	1/2"	1/2"	2"	1 1/2"	1	1.5	1.5	
WALL HYDRANT	3/4"	-	-	-	-	2.5	-	
WATER CLOSET - FLUSH VALVE	1 1/2"	-	4"	2"	4	10	-	
NOTES:								
1. SANITARY RISER UP IN WALL TO FIXTURE SHALL BE A MINIMUM OF 2".								
2. SIZES SHOWN ARE MINIMUMS. SIZES SHOWN ON THE DRAWING THAT ARE LARGER THAN THE SIZES LISTED IN THE SCHEDULE SHALL DICTATE THE ROUGH-IN SIZE.								

WATER HAMMER ARRESTOR SCHEDULE					
MARK	I.P.S.	F.U. RATING	J.R. SMITH	JOSAM	ZURN
A	3/4"	1 - 11	5005	75001	100

PLUMBING MATERIAL LIST

THE SYMBOLS AND THE MATERIAL LIST ARE FOR THE CONVENIENCE OF THE CONTRACTOR. CONTRACTOR SHALL VERIFY QUANTITIES AND FURNISH ALL MATERIALS REQUIRED FOR FULLY OPERATIONAL SYSTEMS, WHETHER SPECIFIED OR NOT.

CATALOG NUMBERS SHALL NOT BE CONSIDERED COMPLETE, BUT ARE GIVEN AS AN AID TO THE CONTRACTOR AND TO INDICATE THE QUALITY REQUIRED. CONTRACTOR IS RESPONSIBLE FOR COMPLETE DESCRIPTION OF MATERIAL ON THESE DRAWINGS AND IN THE SPECIFICATIONS BEFORE ORDERING. THE DESCRIPTION OF THE MATERIAL TAKES PRECEDENCE OVER THE CATALOG NUMBER. THE FIRST MANUFACTURER IS THE BASIS OF DESIGN.

CO

DESCRIPTION: FLOOR CLEANOUT - CAST IRON THREADED ADJUSTABLE HOUSING, FLANGED FERRULE WITH PLUG AND ROUND SECURED NICKEL BRONZE SCORiated TOP.

MANUFACTURER & CATALOG NO.: ZURN Z-1400, SMITH 4000, WADE 6000, JOSAM 56000, WATTS CO-200, MIFAB C1100

DF-1

DESCRIPTION: DRINKING FOUNTAIN - OUTDOOR, GROUND MOUNT, FULLY EXPOSED FREEZE-RESISTANT, BARRIER-FREE ACCESSIBLE DRINKING FOUNTAIN WITH BOTTLE FILLER, BI-LEVEL PEDESTAL WITH PET FOUNTAIN, VANDAL RESISTANT BUBBLER, ONE-PIECE CONSTRUCTION, HEAVY DUTY STEEL POWDER COATED CONSTRUCTION. PROVIDE A DIRECT BURY 4400 FOUNTAIN ADAPTER, BURY DEPTH 24". PROVIDE WITH SUPPLY STOP AND DRAIN VALVE FOR WINTERIZING. PROVIDE WASTE P-TRAP. INSTALL PER MANUFACTURER RECOMMENDATION. COLOR AS SELECTED BY ARCHITECT.

MANUFACTURER & CATALOG NO.: ELKAY LK4420BF1UDBFK

FD-1

DESCRIPTION: FLOOR DRAIN - 6" DIAMETER NICKEL BRONZE ADJUSTABLE TOP, CAST IRON BODY, 3" OUTLET AND FLASHING COLLAR, DEEP SEAL P-TRAP AND TRAP PRIMER CONNECTION.

MANUFACTURER & CATALOG NO.: ZURN Z-415, SMITH 2005, WADE 1100, JOSAM 30000, WATTS FD-100, MIFAB F1100

LAV-1

DESCRIPTION: LAVATORY - WALL MOUNTED, WHITE VITREOUS CHINA, 4" HIGH CONTOURED BACKSPASH, 20" X 18", FAUCET HOLES ON 4" CENTERS, 1-1/4" 17 GAUGE CAST BRASS "P" TRAP WITH CLEANOUT AND ESCUTCHEON. PROVIDE FLOOR MOUNTED LAVATORY CARRIER. MOUNT 34" FLOOR TO RIM.

MANUFACTURER & CATALOG NO.: AMERICAN STANDARD 0355.012, CRANE, ELJER, KOHLER

DESCRIPTION: LAVATORY TRIM - MANUAL METERING FAUCET WITH 0.5 GPM AERATOR AND OPEN GRID STRAINER W/ NO LIFT ROD. LOOSE KEY STOP VALVES WITH COMPRESSION FITTINGS AND WATER SUPPLIES AND RISERS; TRUEBRO HANDILAV GUARD INSULATION KIT.

MANUFACTURER & CATALOG NO.: AMERICAN STANDARD 1340.227

WC-1

DESCRIPTION: ACCESSIBLE WATER CLOSET - WALL HUNG, FLUSH VALVE TYPE, WHITE VITREOUS CHINA, SIPHON JET, WATER SAVING, ELONGATED BOWL, 1-1/2" BACK SPUD. FURNISH WITH ZURN 500 POUND HEAVY DUTY FLOOR MOUNTED COMBINATION CARRIER FITTING SUPPORT. MOUNT 17" FLOOR TO RIM.

MANUFACTURER & CATALOG NO.: AMERICAN STANDARD "AFWALL" 3353101.020, CRANE, KOHLER, ELJER

DESCRIPTION: SEAT - WHITE EXTRA HEAVY OPEN FRONT INJECTION MOLDED SOLID ANTI-MICROBIAL PLASTIC SELF-SUSTAINING SEAT WITH CHECK HINGE AND STAINLESS STEEL OR PLATED STEEL POSTS AND NUTS.

MANUFACTURER & CATALOG NO.: BEMIS 3155C, CHURCH 3155C, BENEKE 533PC, OLSONITE 95CCAM

DESCRIPTION: FLUSH VALVE - REAR SPUD, SINGLE FLUSH, CONCEALED, MANUAL SPECIALTY HYDRAULIC, CHEMICAL RESISTANT MATERIAL, VACUUM BREAKER, VENT AND SPUD FLANGES.

1.6 GALLONS PER FLUSH. 3 YEAR WARRANTY. CONTRACTOR TO VERIFY EQUIPMENT REQUIREMENTS, MANUFACTURER RECOMMENDATIONS AND ROUGH-IN LOCATIONS.

MANUFACTURER & CATALOG NO.: SLOAN ROYAL 952-1.6

WH-1

DESCRIPTION: WALL HYDRANT - FREEZELESS WALL HYDRANT, VACUUM BREAKER, 3/4" MALE HOSE THREAD, BRASS VALVE BODY AND SEAT, STAINLESS STEEL STEM, CHROME FINISH DOOR AND BOX. FURNISH TWO TEE KEY OPERATORS FOR LOCKABLE DOOR. ASSE 1011 APPROVED AND LISTED. MOUNT AT 18" ABOVE GRADE.

MANUFACTURER & CATALOG NO.: WOODFORD B65, ZURN

4TH & MAIN PARK



4TH & MAIN STREET
DOWNTOWN
EVANSVILLE, INDIANA

HAFER
architects • designers • engineers

21 SE Third Street,
Suite 800
Evansville, IN 47708
T: 812.422.4187
F: 812.421.6776
www.hafersdesign.com

In association with:

URBAN PLANNING/LANDSCAPE ARCHITECTURE/CIVIL ENGINEERING

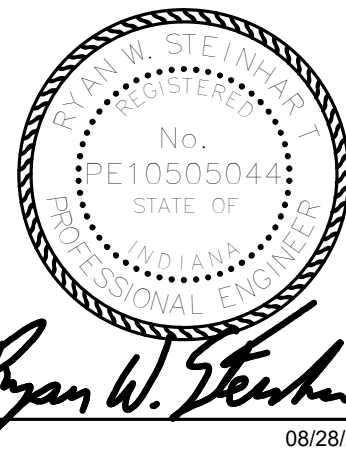
REA RUNDELL
ERNSTBERGER
ASSOCIATES

618 E. Market St. Indianapolis, IN. 46202

STRUCTURAL ENGINEERING

JQOL
QUALITY OF LIFE

8440 Allison Pointe Blvd Suite 425 Indianapolis, IN. 46250



Revisions:

#	Description	Date
1	ADD - 002	09/24/2025

Designed By: CLB
Drawn By: CLB
Checked By: RWS

The drawings, specifications and other documents, including those in electronic form prepared by Hafer for this project are instruments of Service, and may be used solely with respect to this project. The documents may not be reproduced or modified by a third party without first obtaining the express written consent of Hafer. Authorized use of electronic media or file does not guarantee that these files contain complete and accurate information. In order to insure the accuracy of the information contained and that no changes or modifications have been made, these files must be compared to the project's contract documents with stamped and sealed certification and applicable approved modifications.

Sheet title:

PLUMBING DETAILS AND SCHEDULES

Architect's Project No: Date:

2404-183

August, 2025

Drawing No:

P2.1