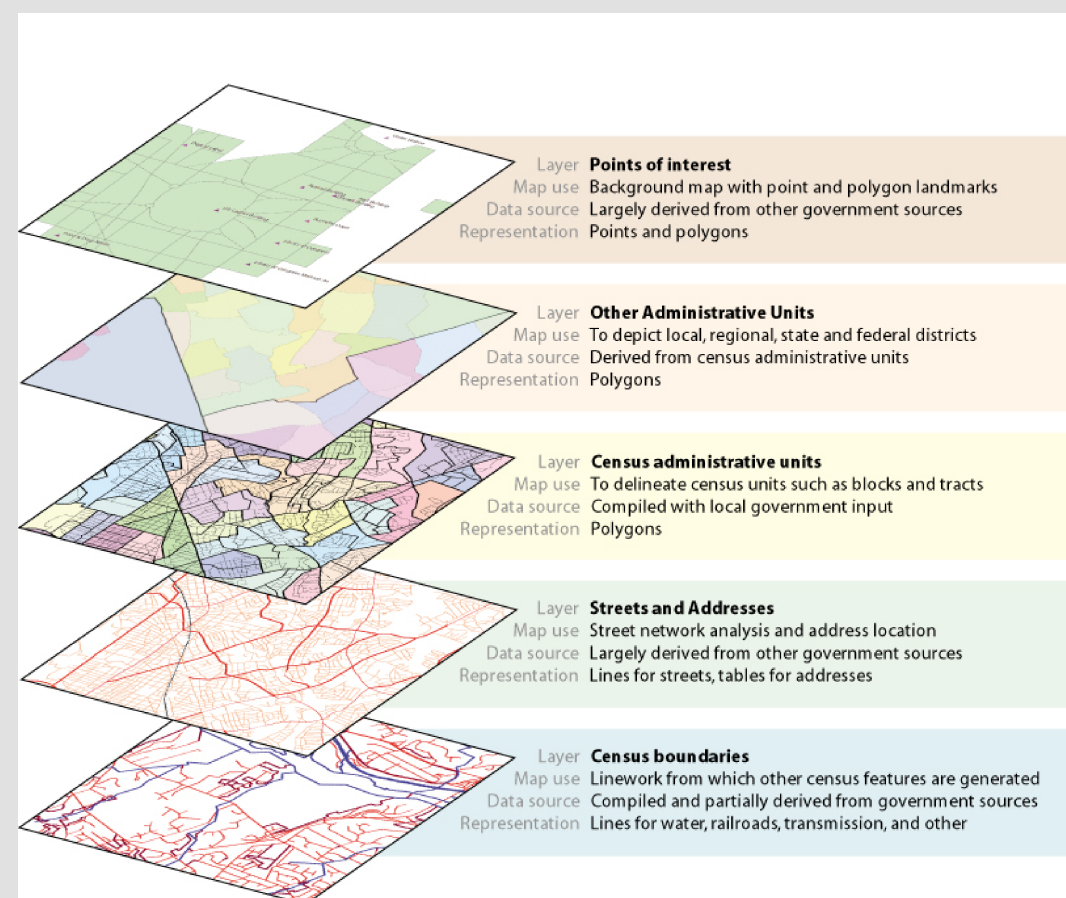


Spatial Data is the backbone of the GIS system

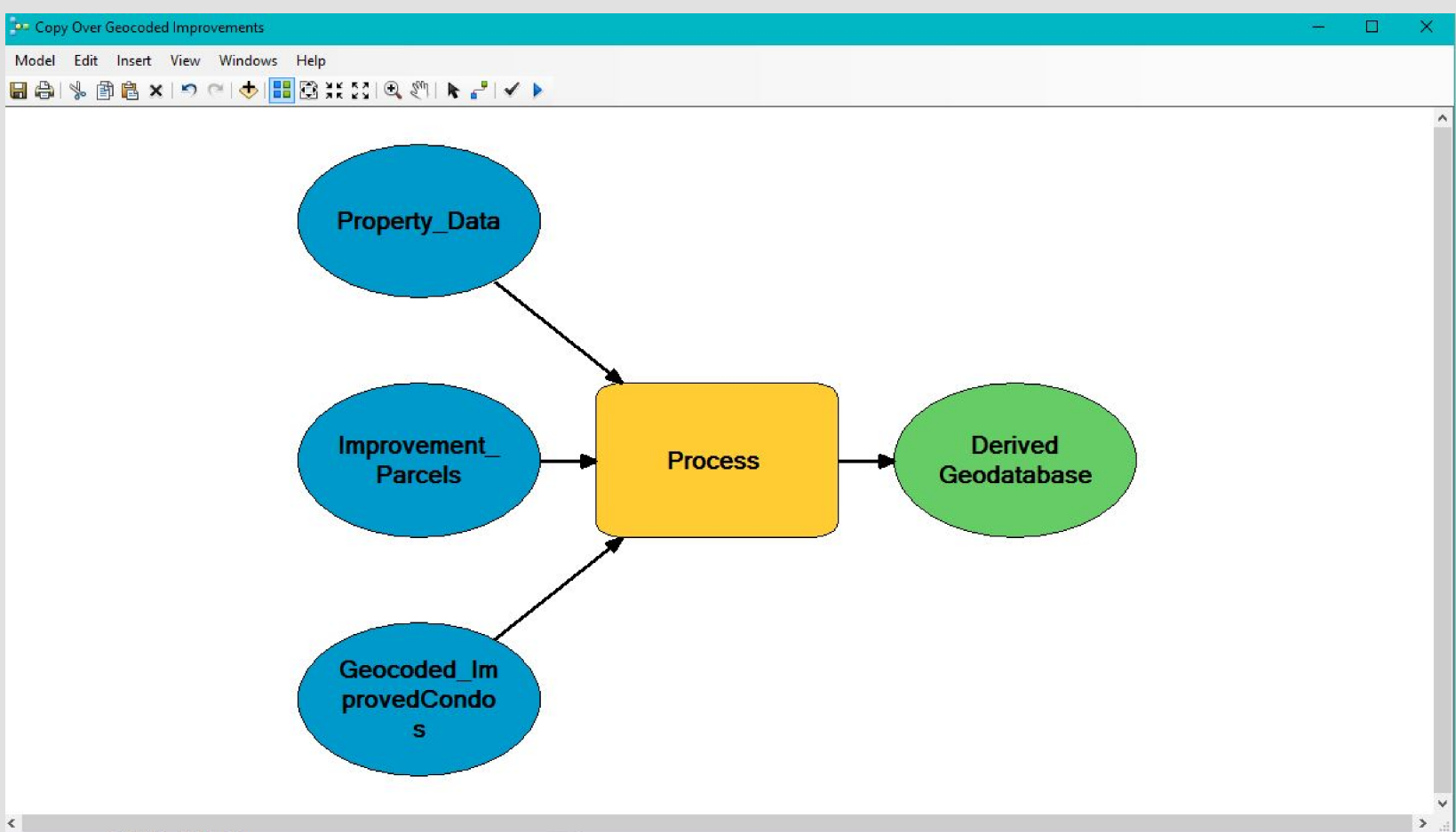
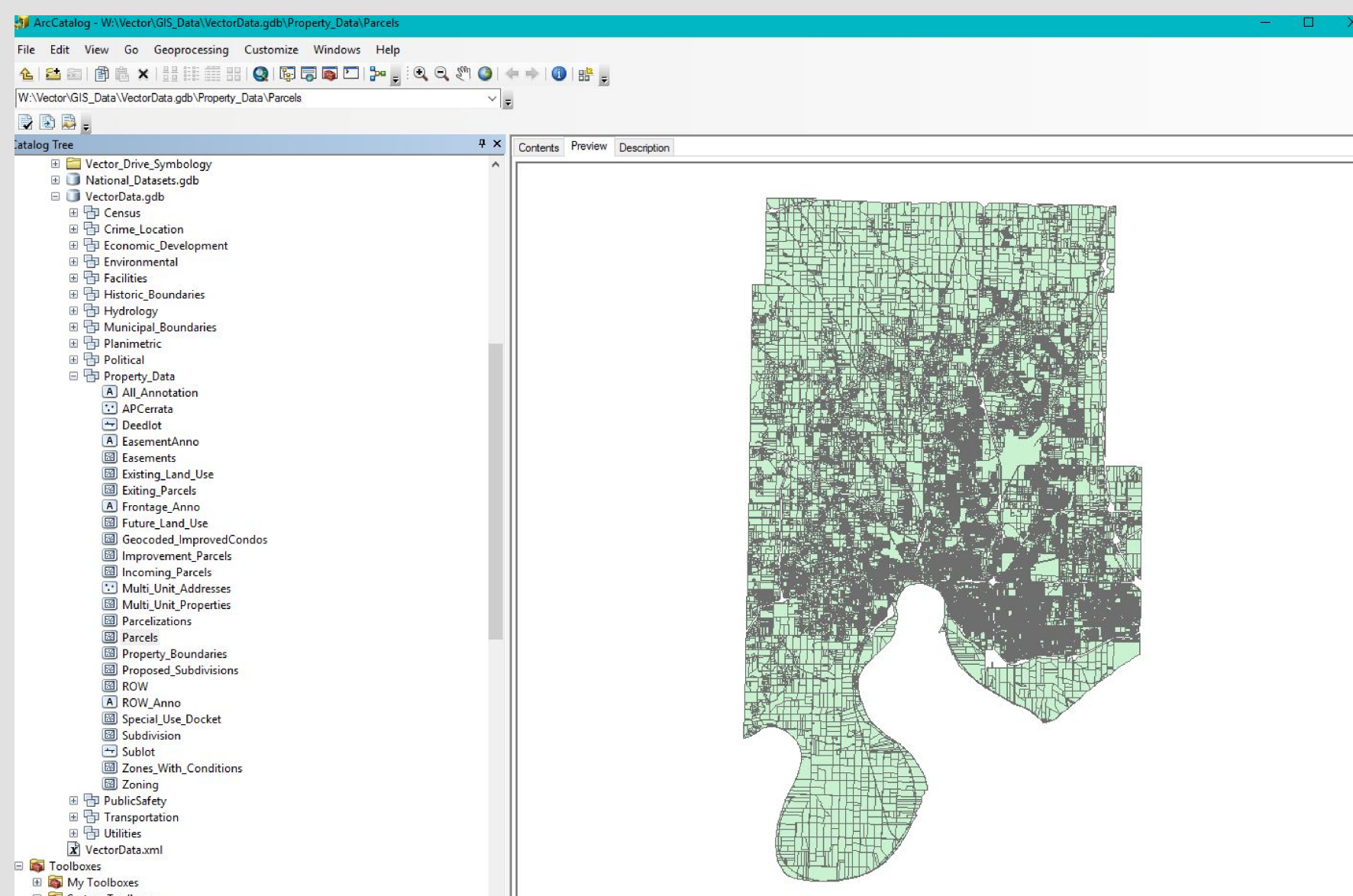
We have over 300 data layers available to the enterprise, including fire hydrants, crime points, and subdivision boundaries.



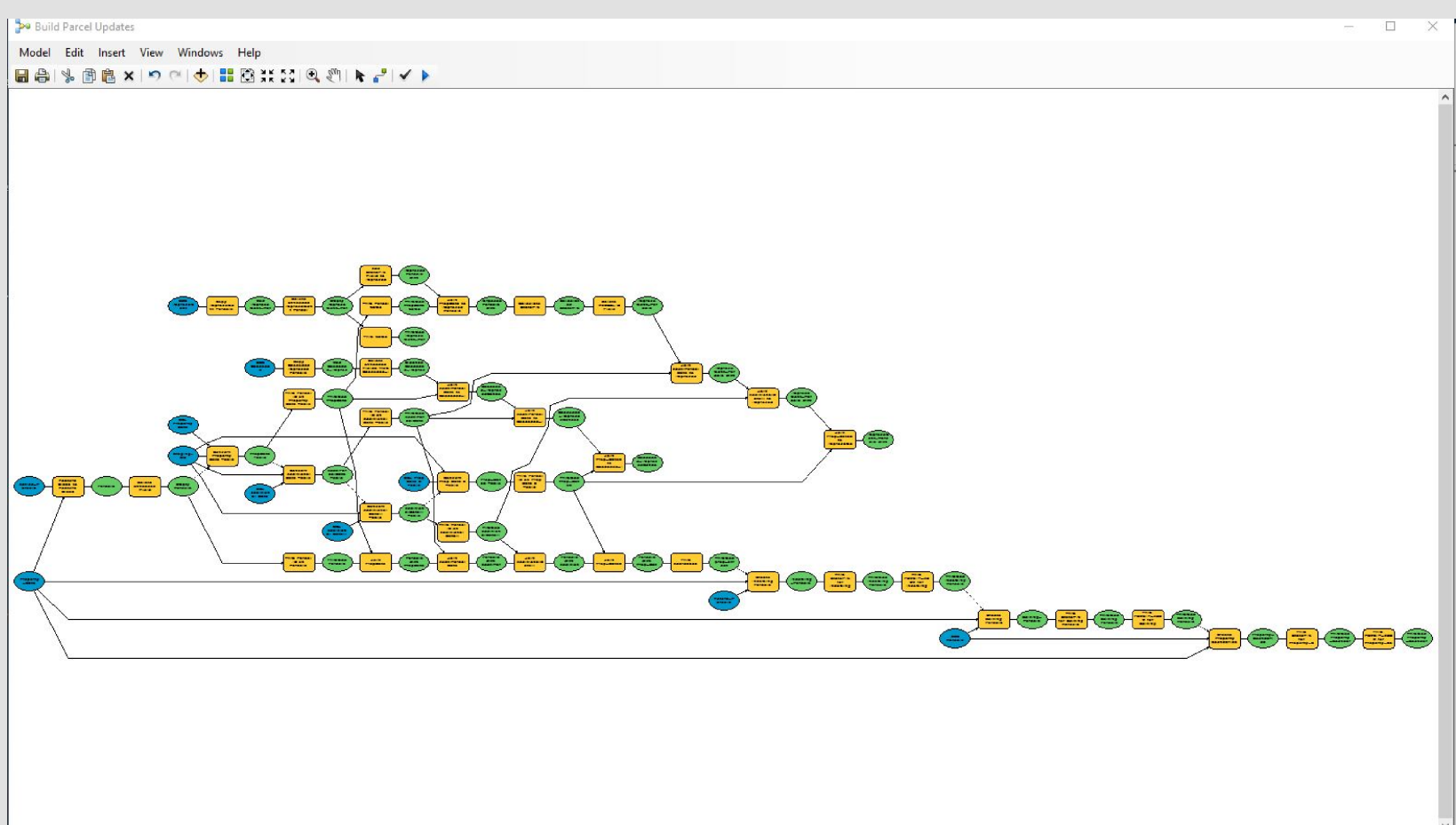
Below is an image our catalog of available data layers, showing the Property Dataset

GIS data can quickly provide answers to your geographic questions for example in Vanderburgh County there are:

***76480 Property Boundaries
1595 Miles of Streets
4485 Properties zoned C-4***

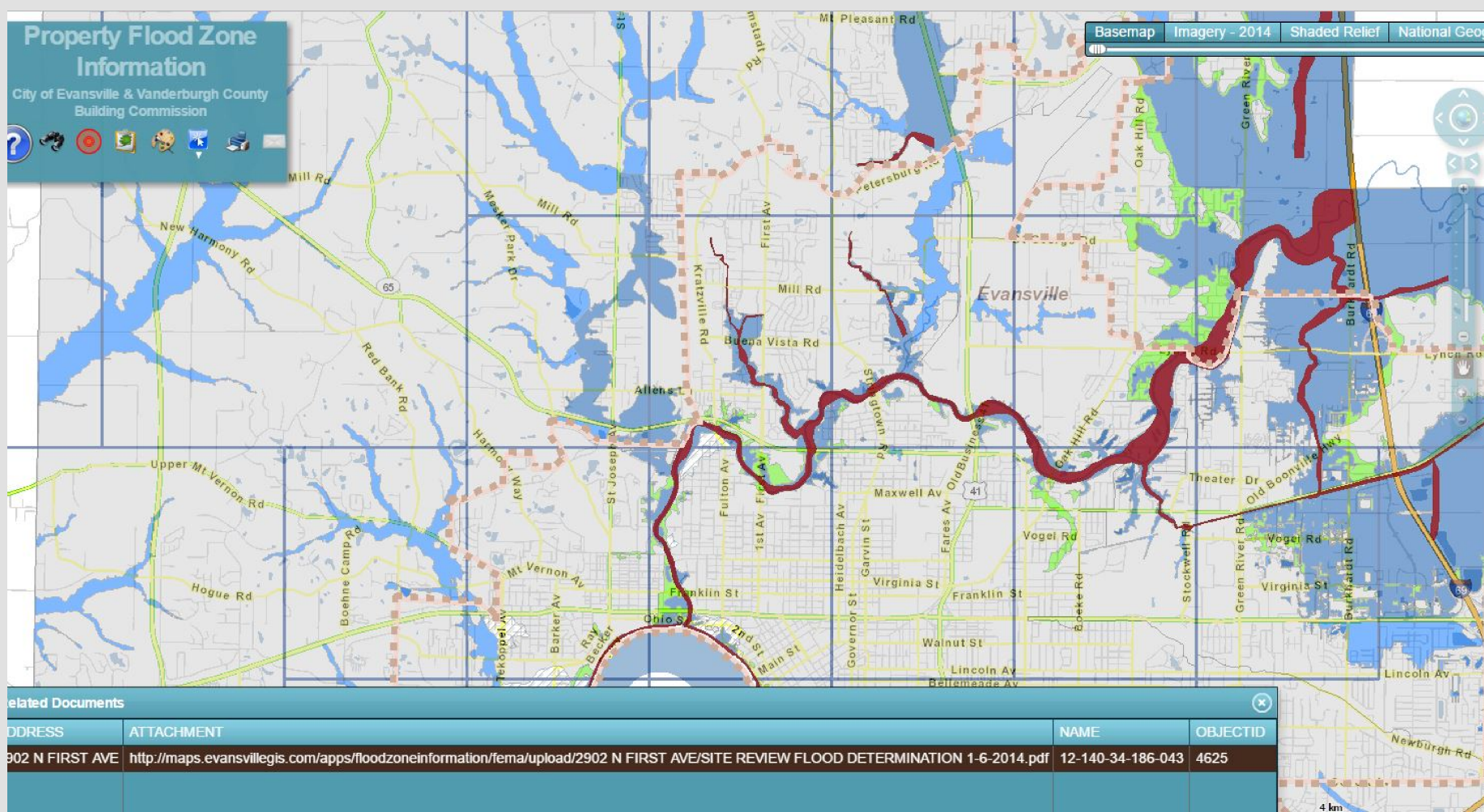


Data is edited by assigned departments and then updated throughout the enterprise using scripted models, ranging from very simple to complex multi-step models.



This GIS Data is then shared via GIS Maps and Web Services

Creating web maps and apps used by everyone.



Folder: /

Current Version: 10.21

View Footprints In: [ArcGIS.com Map](#)

Folders:

- [APARTMENTS](#)
- [APC](#)
- [ASSESSOR](#)
- [BASEMAPS](#)
- [BC](#)
- [BICENTENNIAL](#)
- [BOUNDARIES](#)
- [CENSUS](#)
- [CONCERN](#)
- [CRIMES](#)
- [ECONOMIC DEVELOPMENT](#)
- [EMPO](#)
- [ENVIRONMENTAL](#)
- [EWSU](#)
- [GEOCODERS](#)
- [GRANICUS](#)
- [HEAVYTRASH](#)
- [HYDROLOGY](#)
- [IDHS](#)
- [INSPECTORS](#)
- [ORTHOS](#)
- [PLANIMETRIC](#)
- [POLITICAL](#)
- [PROPERTY](#)
- [TEST](#)
- [TRANSPORTATION](#)
- [URBAN_FORESTRY](#)
- [Utilities](#)
- [UTILITY](#)

[JSON](#) | [SOAP](#)

Folder: **ASSESSOR**

Current Version: 10.21

View Footprints In: [ArcGIS.com Map](#)

Services:

- [ASSESSOR/FORECLOSURES](#) (MapServer)
- [ASSESSOR/NEIGHBORHOODS_ASSESSMENTS](#) (MapServer)
- [ASSESSOR/PARCEL_DATA](#) (MapServer)
- [ASSESSOR/POI](#) (MapServer)
- [ASSESSOR/PROPERTY_DIMENSIONS](#) (MapServer)
- [ASSESSOR/SALES_DATA](#) (MapServer)
- [ASSESSOR/TAX_SALES](#) (MapServer)

Supported Interfaces: [REST](#) [SOAP](#) [Sitemap](#) [Geo Sitemap](#)

