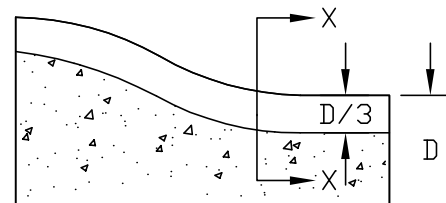
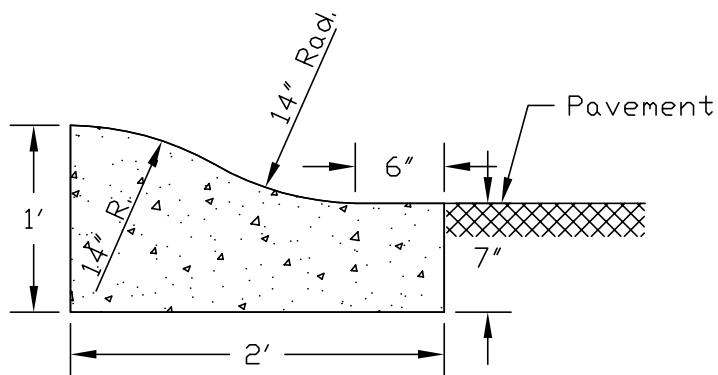


Sawed Contraction Joint

8" COMBINED CURB and GUTTER



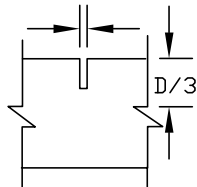
Sawed Contraction Joint

ROLL CURB and GUTTER

NOTES:

- 1.) Formed or sawed contraction joints will be placed on 10' centers (Max.).
- 2.) Where sidewalk and curb are adjacent, sawed contraction joints will be placed in the curb at every other sidewalk joint.
- 3.) All exposed edges shall be rounded with a 1/4" radius tool.
- 4.) For concrete pavements with integral curb & gutter, sawed construction joints shall be at the same location as pavement joints.
- 5.) Concrete for curb & gutter shall be 3500 psi concrete.

1/8" min., 1/4" max.



Section X-X

CONTRACTION JOINT

- 6.) Subgrade for curb & gutter shall be a minimum of 2" thick of either "B" Borrow or No. 53 crushed stone and mechanically compacted.
- 7.) The cost of the curb & gutter shall include all of the above items.

DETAIL D-2

8" Combined Curb & Gutter, Roll Curb & Gutter
and Contraction Joint
Scale 1"=1' (Rev. Date 10/31/97)