

PROJECT	DESIGNATION
1801726	1801726
CONTRACT	BRIDGE FILE
R-41599	N/A

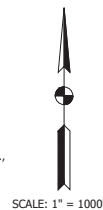
# INDIANA DEPARTMENT OF TRANSPORTATION



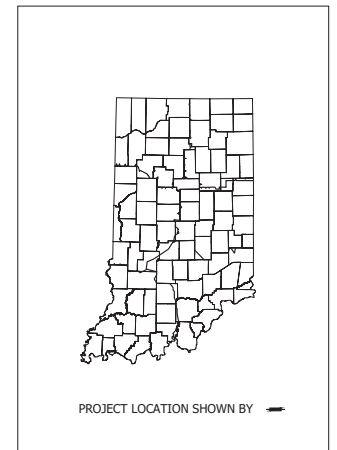
## ROAD PLANS

PROJECT NO. 1801726 P.E.  
1801726 R/W  
1801726 CONST.

Reconstruction of 1.26-mile of roadway and approximately 1.26 miles of a 10-foot multi-use trail. Road construction beginning at the intersection of Walnut Street and MLK Jr. Blvd., and ending at the intersection of Walnut Street and US 41. Trail construction beginning at the intersection of Walnut Street and MLK Jr. Blvd., and ending at the intersection of Walnut Street and US 41, in Sections 30-29 and 28, T6S, R10W in Knight Twp., City of Evansville, Vanderburgh County, Indiana.



TRAFFIC DATA	
A.A.D.T. (2020)	8,877
A.A.D.T. (2040)	9,766
D.H.V. (2040)	980
DIRECTIONAL DISTRIBUTION	56/44 %
TRUCKS	15% A.A.D.T.
	11% D.H.V.
DESIGN DATA	
DESIGN SPEED	30 M.P.H.
PROJECT DESIGN CRITERIA	3R (Non-Freeway)
FUNCTIONAL CLASSIFICATION	Minor Arterial
RURAL/URBAN	Urban
TERRAIN	Level
ACCESS CONTROL	None

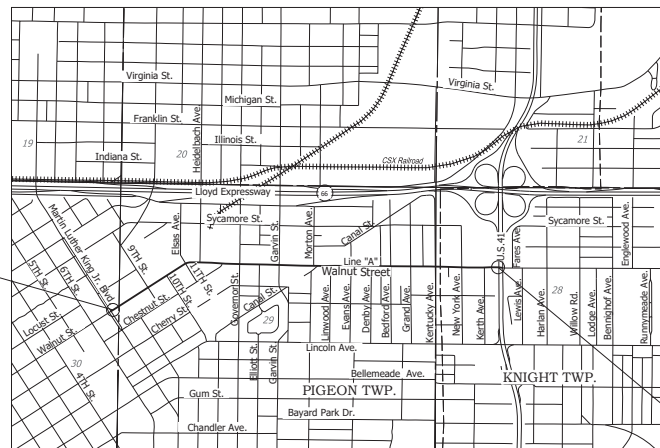


BRIDGE LENGTH:	N/A	MI.
ROADWAY LENGTH:	1.26	MI.
TOTAL LENGTH:	1.26	MI.
MAX. GRADE:	x	%
H.U.C. 14:	05140202010030	

BEGINNING	LATITUDE: 37° 58' 18"	LONGITUDE: 87° 33' 59"
ENDING	LATITUDE: 37° 58' 25"	LONGITUDE: 87° 32' 39"

BEGIN PROJECT DES 1801726  
Sta. 34+00.00 "A"

END PROJECT DES 1801726  
Sta. 100+53.28 "A"



### LOCATION MAP

SECTIONS 30-29-28, T-6-S, R-10-W  
CITY, EVANSVILLE  
TWP. KNIGHT & PIGEON  
COUNTY, VANDERBURGH  
STATE, INDIANA

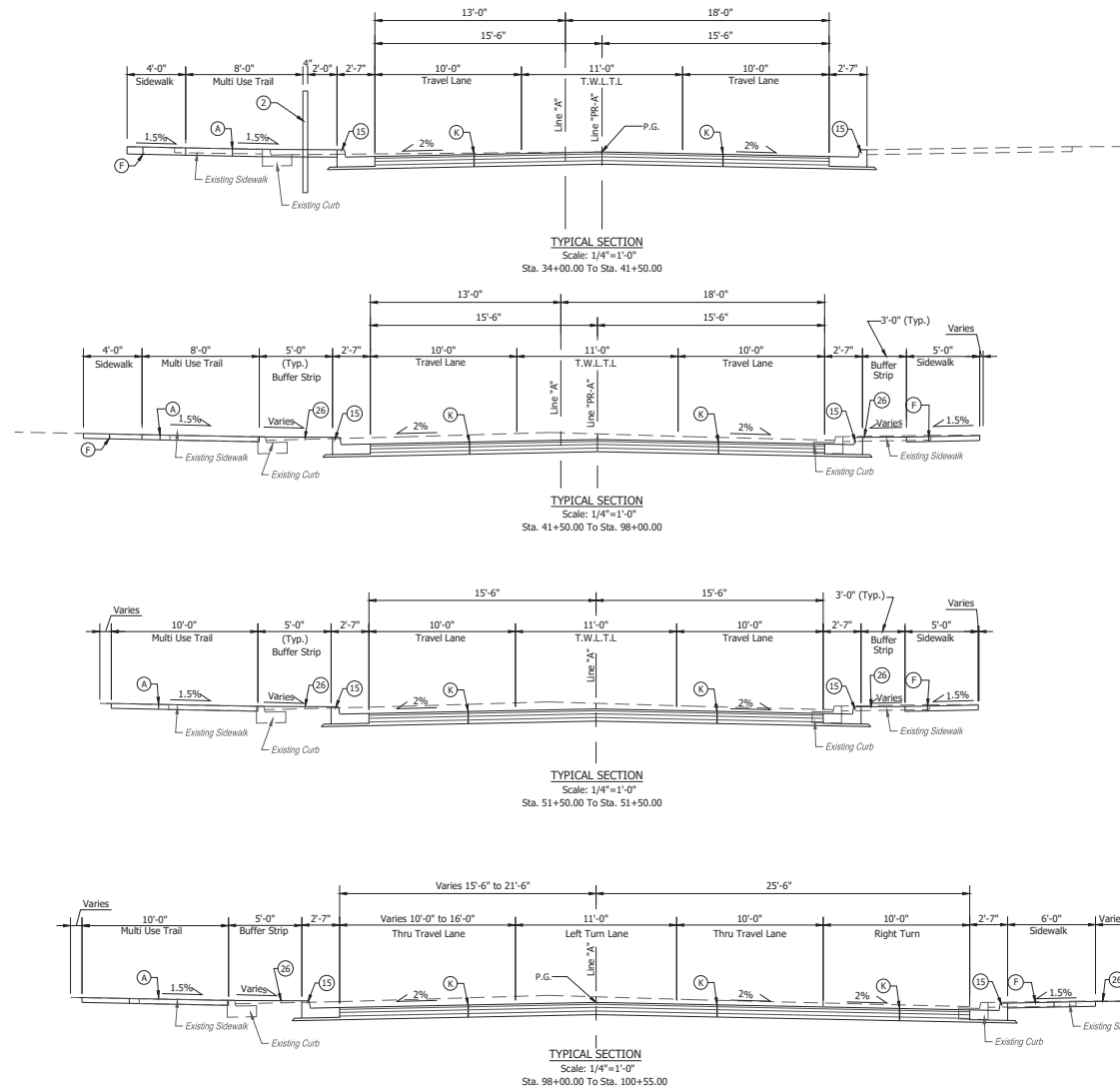
Preliminary



PLANS PREPARED BY:	LOCHMUELLER GROUP, INC.	(812) 479-6200
	6200 Vogel Road, Evansville, IN 47715	PHONE NUMBER
CERTIFIED BY:		DATE
APPROVED FOR LETTING:		DATE

INDIANA DEPARTMENT OF TRANSPORTATION  
STANDARD SPECIFICATIONS DATED 2020  
TO BE USED WITH THESE PLANS

BRIDGE FILE	
N/A	DESIGNATION
1801726	
SHEETS	
N/A	1 of 1
PROJECT	
R-41599	1801726



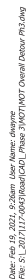
**NOTE:**  
1. See Construction Details For Edge Treatment Locations

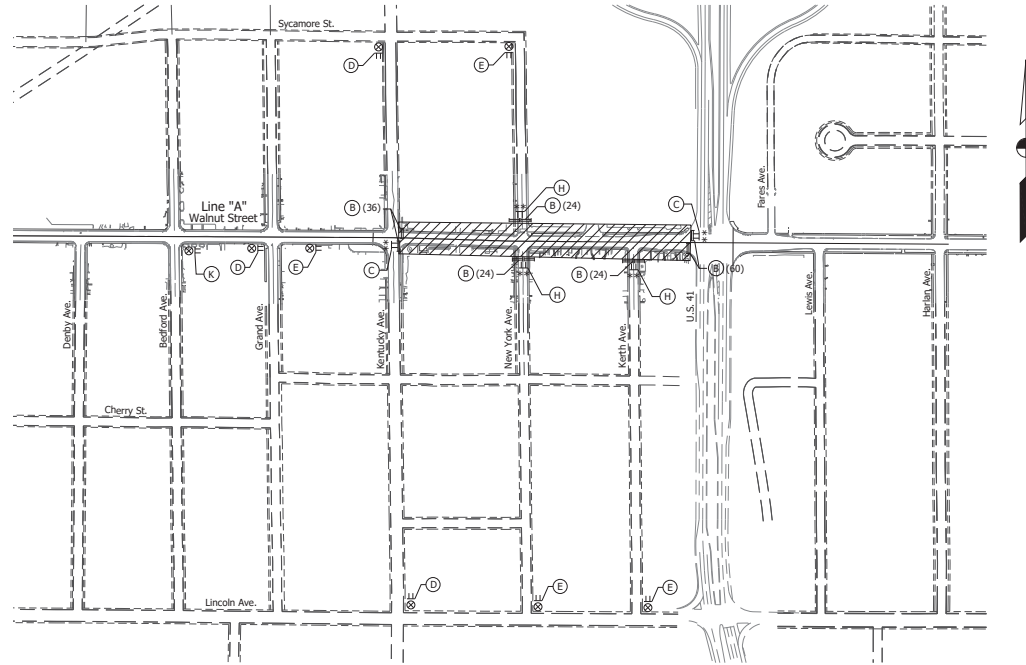
**LEGEND**

- (A) PCCP, 4" on Subgrade Treatment Type II
- (B) Sidewalk, Concrete, 4"
- (C) Full Depth HMA Pavement 165#/SY QC/QA-HMA 3, 76, Surface 9.5mm, on 275#/SY QC/QA-HMA 3, 76, Intermediate 19.0mm, on 330#/SY QC/QA-HMA 3, 64, Base 19.0mm, on 3" Compacted Aggregate, No. 53 on Subgrade Treatment Type II
- (D) Bicycle Safety Railing
- (E) Curb & Gutter, Concrete
- (F) Sodding, Nursery

Preliminary

RECOMMENDED FOR APPROVAL _____ DESIGN ENGINEER _____ DATE _____		INDIANA DEPARTMENT OF TRANSPORTATION	HORIZONTAL SCALE		BRIDGE FILE	
			As Shown		N/A	
DESIGNED: _____ DAS DRAWN: _____ LLF		PHASE III - TYPICAL SECTIONS LINE "A"	VERTICAL SCALE		DESIGNATION	
			-		R-41599	
CHECKED: _____ JAW CHECKED: _____ DAS			SURVEY BOOK		SHEETS	
			CONTRACT		PROJECT	
			R-41599		1801726	





**PHASE I Sta. 90+50 to Sta. 101+00 "A"**

1. Construct Walnut St. (half at a time) from East of Kentucky Ave. to West of US 41.
2. Construct New York St. half at a time.
3. Construct Kerth Ave. half at a time.
4. All sign locations are approximate and shall be verified by contractor.
5. Maintain access to all drives and business.

- LEGEND**
- (B) Std. Barricade, Type III-B (Feet Req'd.)
  - (C) Road Closure Sign Assembly; R11-3 (Road Closed To Thru Traffic)
  - (D) Construction Sign A, XW20-1 (Road Construction Ahead)
  - (E) Construction Sign A, XG20-3 (Road Closed Ahead)
  - (F) Construction Sign A, XG20-2 (End Construction)
  - (G) Construction Sign A, XW20-2 (Detour Ahead)
  - (H) Road Closure Sign Assembly; R11-2 (Road Closed)
  - (K) Construction Sign, A, XW2-6 (Worksite Penalty)
  - (P) Road Closure Sign Assembly; R11-3 (Road Closed To Thru Traffic) w/ XMM-10 (L or R) (Detour Arrow)

- LEGEND**
- Standard Drum
  - T Detour Route Marker
  - TT Construction Sign
  - ⊗ Construction Warning Light, A
  - \* \* Construction Warning Light, B
  - Std. Barricade
  - ▨ Work Area
  - Line, Remove

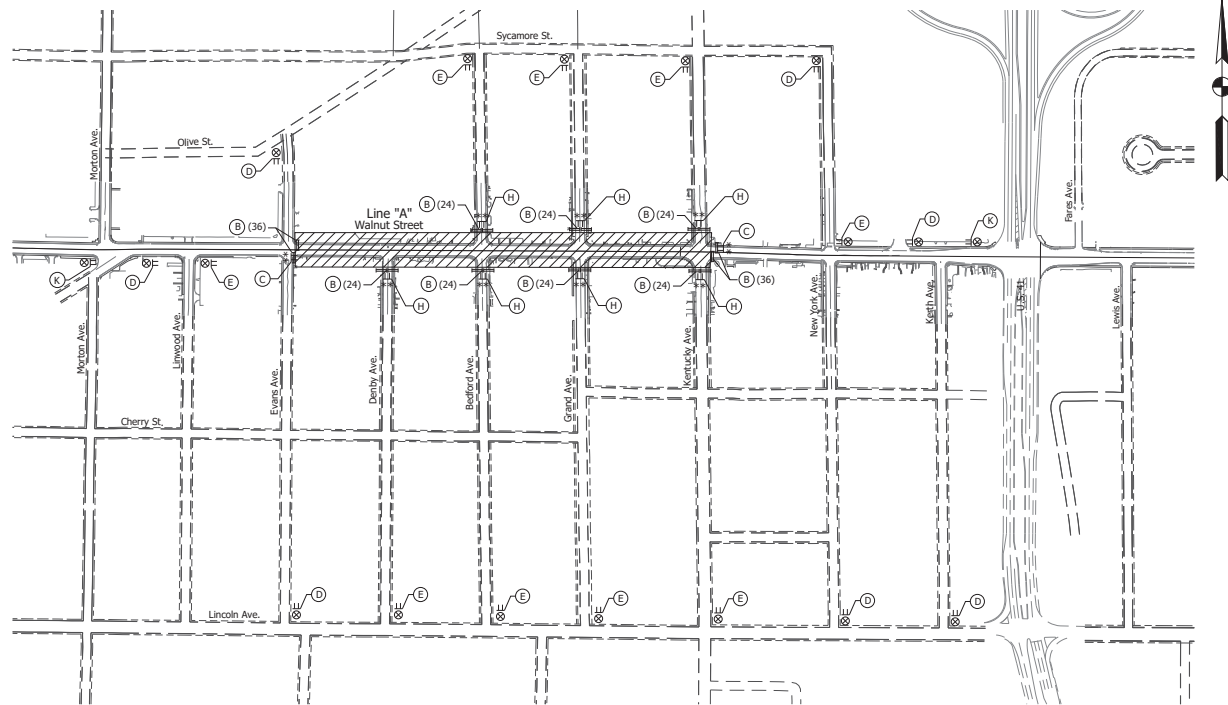
Preliminary

RECOMMENDED FOR APPROVAL _____		DATE _____
DESIGN ENGINEER		
DESIGNED: DAS	DRAWN: LLF	
CHECKED: JAW	CHECKED: DAS	

INDIANA  
DEPARTMENT OF TRANSPORTATION

MAINTENANCE OF TRAFFIC  
PHASE I

HORIZONTAL SCALE	BRIDGE FILE
1"=200'	N/A
VERTICAL SCALE	DESIGNATION
-	1801726
SURVEY BOOK	SHEETS
R-41599	14 of --
CONTRACT	PROJECT
R-41599	1801726



**PHASE II Sta. 76+40 to Sta. 90+50 "A"**

1. Construct Walnut St. (half at a time) from East of Evans St. to West of Kentucky Ave.
2. Construct Denby St. half at a time.
3. Construct Bedford Ave. half at a time.
4. Construct Grand Ave. half at a time.
5. All sign locations are approximate and shall be verified by contractor.
6. Maintain access to all drives and business.

- LEGEND**
- (B) Std. Barricade, Type III-B (Feet Req'd.)
  - (C) Road Closure Sign Assembly; R11-3 (Road Closed To Thru Traffic)
  - (D) Construction Sign A, XW20-1 (Road Construction Ahead)
  - (E) Construction Sign A, XG20-3 (Road Closed Ahead)
  - (F) Construction Sign A, XG20-2 (End Construction)
  - (G) Construction Sign A, XW20-2 (Detour Ahead)
  - (H) Road Closure Sign Assembly; R11-2 (Road Closed)
  - (K) Construction Sign, A, XW2-6 (Worksite Penalty)
  - (P) Road Closure Sign Assembly; R11-3 (Road Closed To Thru Traffic) w/ XM4-10 (L or R) (Detour Arrow)

- LEGEND**
- Standard Drum
  - T Detour Route Marker
  - TT Construction Sign
  - ⊗ Construction Warning Light, A
  - \* Construction Warning Light, B
  - Std. Barricade
  - Work Area
  - Line, Remove

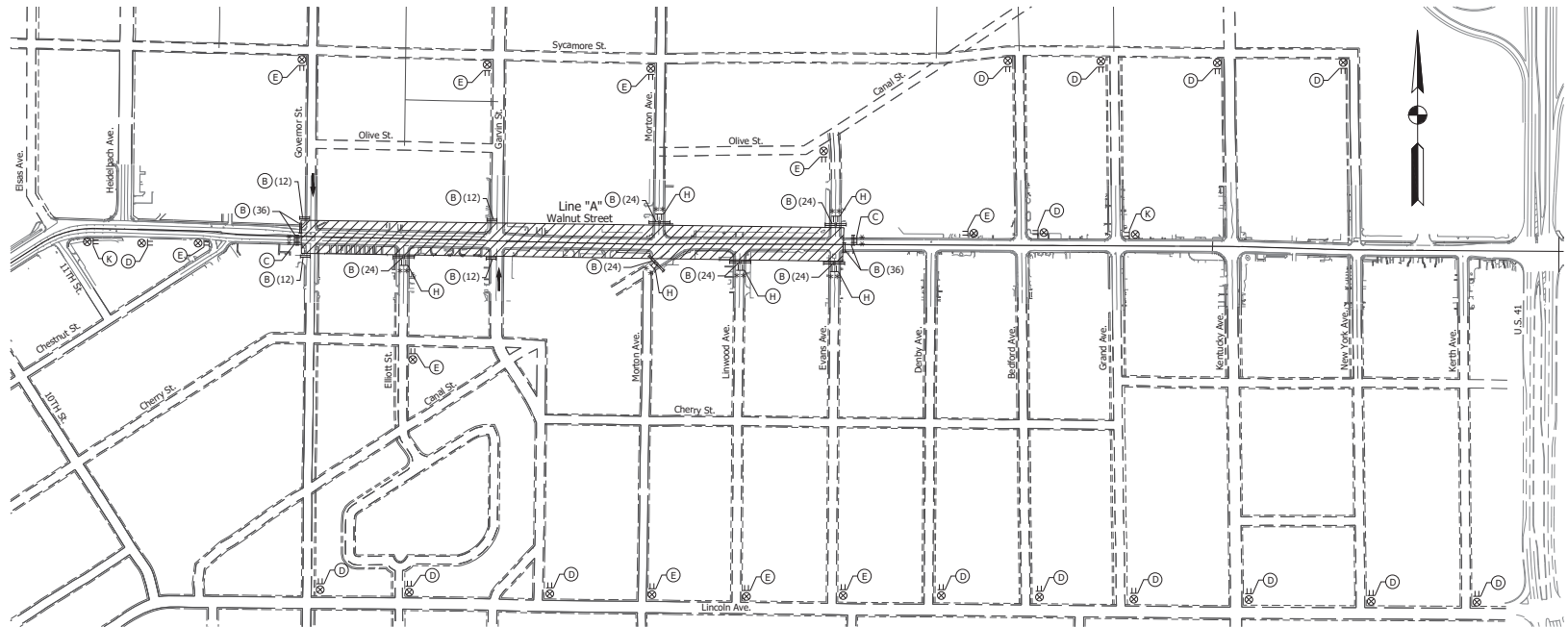
Preliminary

RECOMMENDED FOR APPROVAL		DESIGN ENGINEER	DATE
DESIGNED: DAS	DRAWN: LLF		
CHECKED: JAW	CHECKED: DAS		

INDIANA  
DEPARTMENT OF TRANSPORTATION

MAINTENANCE OF TRAFFIC  
PHASE II

HORIZONTAL SCALE	BRIDGE FILE	
1"=200'	N/A	
VERTICAL SCALE	DESIGNATION	
-	1801.726	
SURVEY BOOK	SHEETS	
R-41599	15	of 1
CONTRACT	PROJECT	
R-41599	1801.726	



#### PHASE III Sta. 57+75 to Sta. 76+40 "A"

1. Construct Walnut St. (half at a time) from West of Governor St. to East of Evans St.
2. Construct Elliott St. half at a time.
3. Construct Garvin St. half at a time.
4. Construct Morton Ave. half at a time.
5. Construct Linwood Ave. half at a time.
6. All sign locations are approximate and shall be verified by contractor.
7. Maintain access to all drives and business.

#### LEGEND

- (B) Std. Barricade, Type III-B (Feet Req'd.)
- (C) Road Closure Sign Assembly; R11-3 (Road Closed To Thru Traffic)
- (D) Construction Sign A, XW20-1 (Road Construction Ahead)
- (E) Construction Sign A, XG20-2 (End Construction)
- (F) Construction Sign A, XW20-2 (Detour Ahead)
- (H) Road Closure Sign Assembly; R11-2 (Road Closed)
- (X) Construction Sign, A, XW2-6 (Worksite Penalty)
- (P) Road Closure Sign Assembly; R11-3 (Road Closed To Thru Traffic) w/ XM4-10 (L or R) (Detour Arrow)

#### LEGEND

- Standard Drum
- TT Detour Route Marker
- TT Construction Sign
- ⊗ Construction Warning Light, A
- \*\* Construction Warning Light, B
- == Std. Barricade
- ▨ Work Area
- Detour Route
- Line, Remove

Preliminary

Order Date: 10/10/2023 9:27am User Name: design  
File: S:\2023\117\0045\Road\CAI\_Phase 3\CONTRACT Phases 1-4.dwg

RECOMMENDED FOR APPROVAL	DESIGN ENGINEER	DATE
DESIGNED: DAS	DRAWN: LLF	
CHECKED: JAW	CHECKED: DAS	

INDIANA  
DEPARTMENT OF TRANSPORTATION

MAINTENANCE OF TRAFFIC  
PHASE III

HORIZONTAL SCALE	BRIDGE FILE
1"=200'	N/A
VERTICAL SCALE	DESIGNATION
-	1801.726
SURVEY BOOK	SHEETS
R-41599	16 of --
CONTRACT	PROJECT
R-41599	1801.726



1. Construct Walnut St. (half at a time) from East of MLK Jr. Blvd. to West of Governor St.
2. Construct 9th St. half at a time.
3. Construct 10th St. half at a time.
4. Construct 11th St. half at a time.
5. Construct Elsas Ave. half at a time.
6. Construct Heidelberg Ave. half at a time.
7. All sign locations are approximate and shall be verified by contractor.
8. Maintain access to all drives and business.

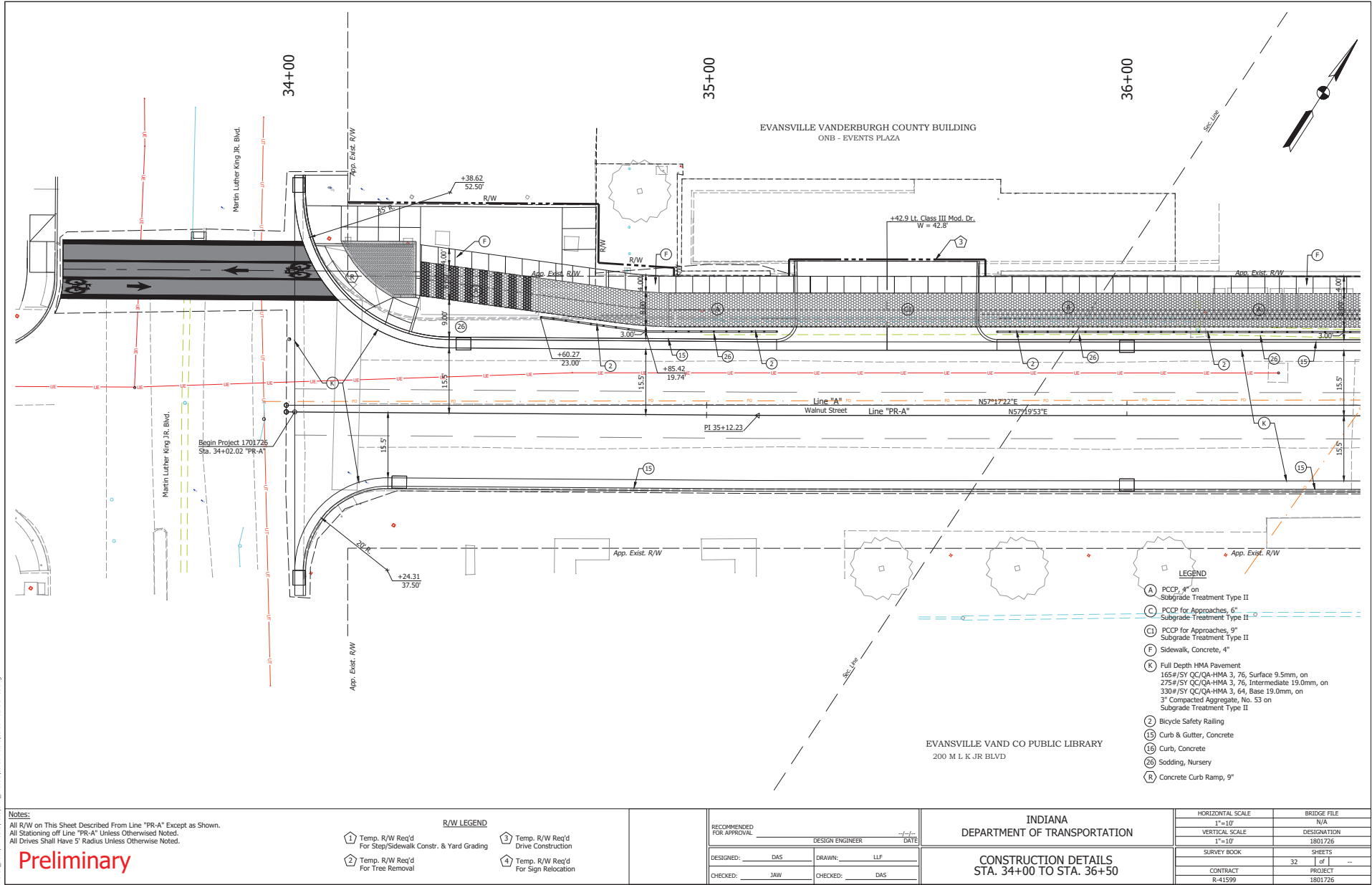
B Std. Barricade, Type III-B (Feet Req'd.)  
C Road Closure Sign Assembly; R11-3 (Road Closed To Thru Traffic)  
D Construction Sign A, WX20-1 (Road Construction Ahead)  
E Construction Sign A, XG20-3 (Road Closed Ahead)  
F Construction Sign A, XG20-2 (End Construction)  
G Construction Sign A, WX20-2 (Detour Ahead)  
H Road Closure Sign Assembly; R11-2 (Road Closed)  
K Construction Sign A, WX2-6 (Worksite Penalty)  
P Road Closure Sign Assembly; R11-3 (Road Closed To Thru Traffic)  
w/ XM4-10 (L or R) (Detour Arrow)

- Standard Drum
- T Detour Route Marker
- TT Construction Sign
- ⊗ Construction Warning Light, A
- \*\* Construction Warning Light, B
- ▬ Std. Barricade
- ▭ Work Area
- Detour Route
- Line, Remove

RECOMMENDED FOR APPROVAL	DESIGN ENGINEER	DATE
DESIGNED: DAS	DRAWN: LLF	
CHECKED: JAW	CHECKED: DAS	

MAINTENANCE OF TRAFFIC  
PHASE IV

	HORIZONTAL SCALE	BRIDGE FILE		
	1"=200'	N/A		
	VERTICAL SCALE	DESIGNATION		
	-	1801726		
	SURVEY BOOK	SHEETS		
	R-41599	17	of	--
	CONTRACT	PROJECT		
	R-41590	1801736		



**Notes:**  
All R/W on this Sheet Described From Line "PR-A" Except as Shown.  
All Stationing off Line "PR-A" Unless Otherwise Noted.  
All Drives Shall Have 5' Radius Unless Otherwise Noted.

**Preliminary**

**R/W LEGEND**

- ① Temp. R/W Req'd For Step/Sidewalk Constr. & Yard Grading
- ② Temp. R/W Req'd For Tree Removal
- ③ Temp. R/W Req'd Drive Construction
- ④ Temp. R/W Req'd For Sign Relocation

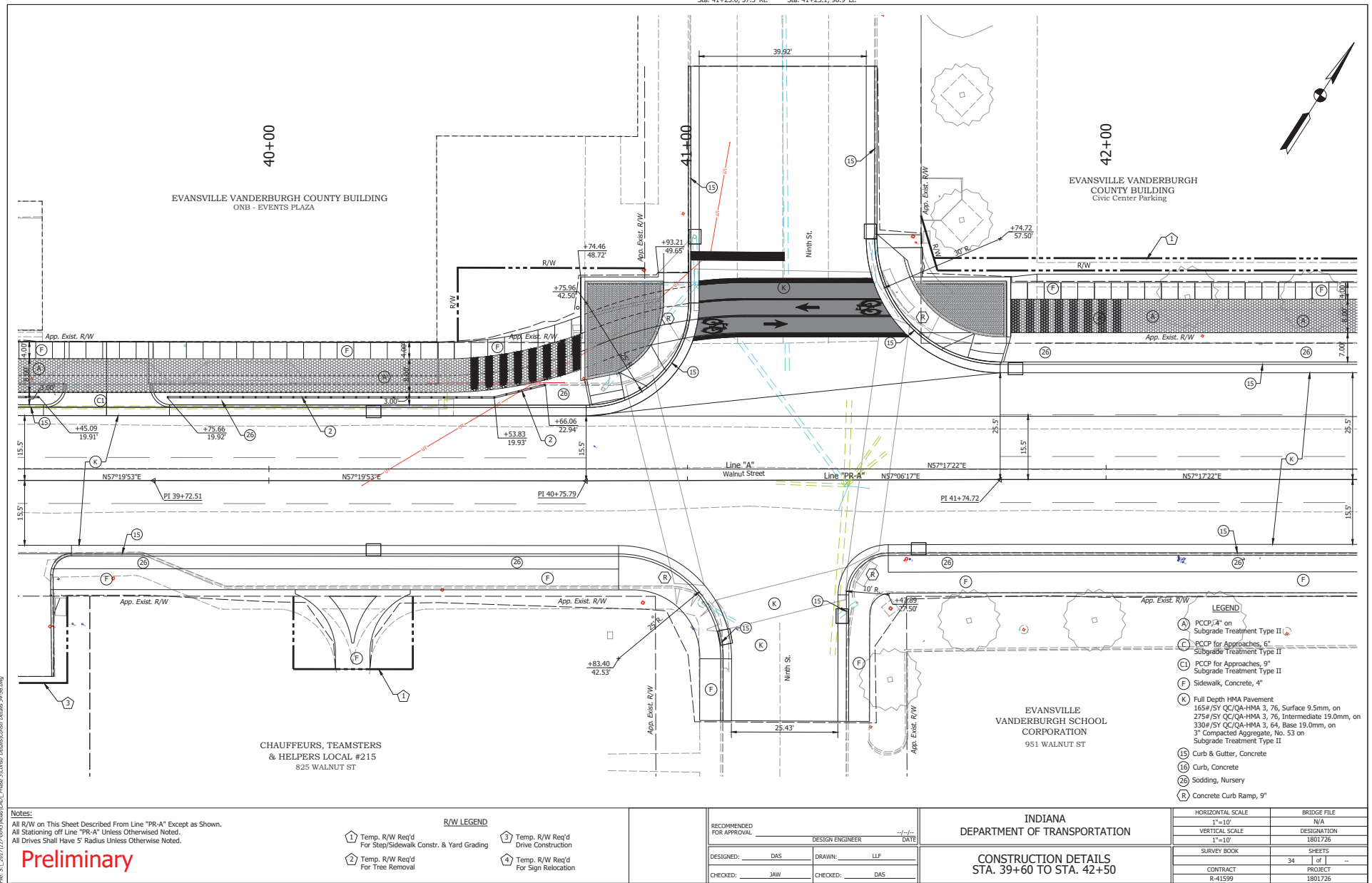
RECOMMENDED FOR APPROVAL	DESIGN ENGINEER	DATE
DESIGNED: DAS	DRAWN: LLF	
CHECKED: JAW	CHECKED: DAS	

INDIANA  
DEPARTMENT OF TRANSPORTATION  
  
CONSTRUCTION DETAILS  
STA. 34+00 TO STA. 36+50

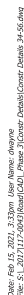
HORIZONTAL SCALE	BRIDGE FILE
1"=10'	TVA
VERTICAL SCALE	DESIGNATION
1"=10'	1801726
SURVEY BOOK	SHEETS
CONTRACT	32 of 1801726
R-41599	PROJECT

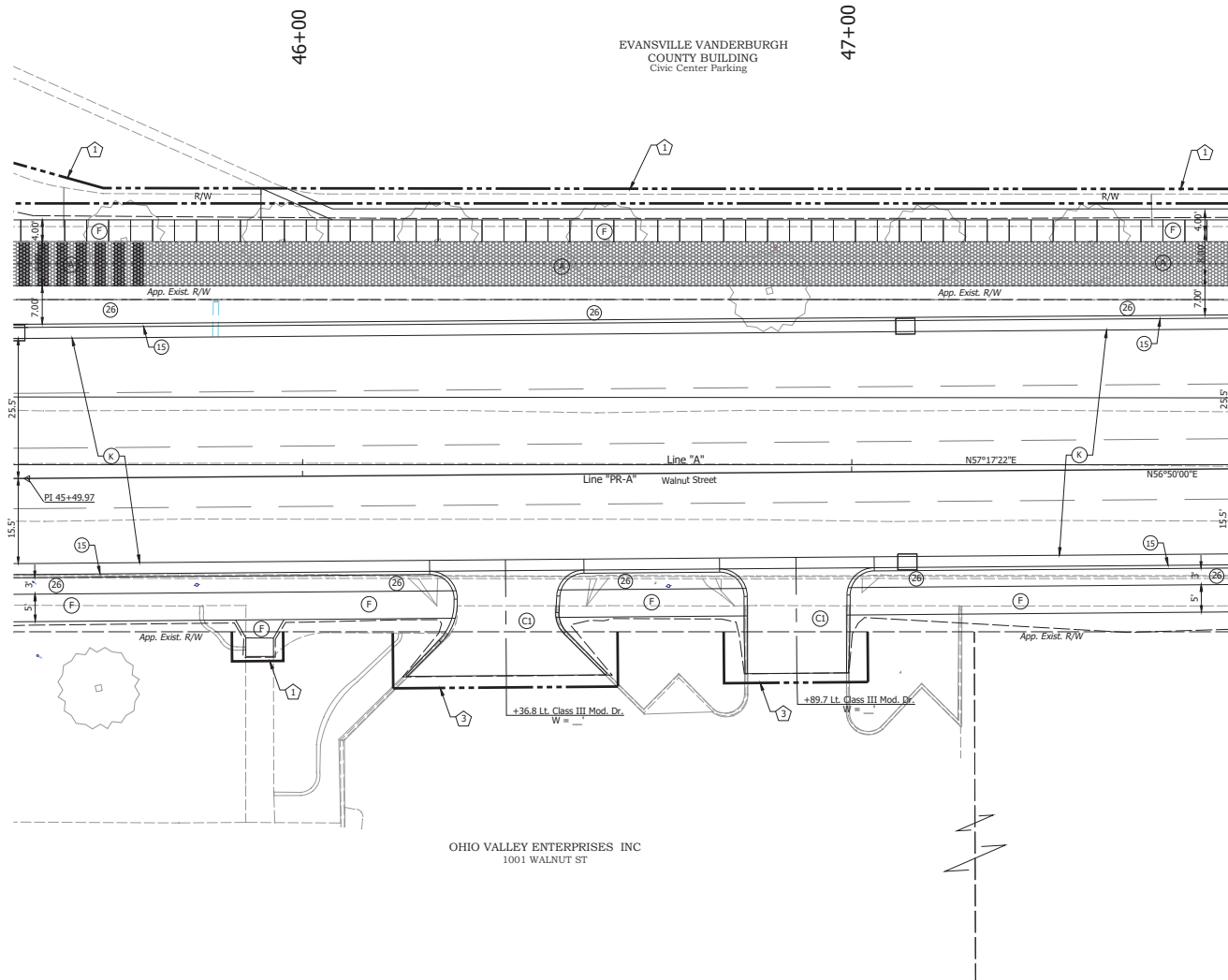


Spl. Public Road Approach Sta. 41+23.0, 57.5' Rt.  
Spl. Public Road Approach Sta. 41+23.1, 98.9' Lt.



Order Date 12/15/2021 3:23pm User Name: design  
File: S:\2021\17\1801726\1801726\_CAD\_Phase 3\Center Detail\Constr Details 34-58.dwg





- LEGEND**
- (A) PCCP, 4" on Subgrade Treatment Type II
  - (C) PCCP for Approaches, 6" Subgrade Treatment Type II
  - (C) PCCP for Approaches, 9" Subgrade Treatment Type II
  - (F) Sidewalk, Concrete, 4"
  - (K) Full Depth HMA Pavement 165#/SY QC/QA-HMA 3, 76, Surface 9.5mm, on 275#/SY QC/QA-HMA 3, 76, Intermediate 19.0mm, on 330#/SY QC/QA-HMA 3, 64, Base 19.0mm, on 3" Compacted Aggregate, No. 53 on Subgrade Treatment Type II
  - (15) Curb & Gutter, Concrete
  - (16) Curb, Concrete
  - (26) Sodding, Nursery
  - (R) Concrete Curb Ramp, 9"

SIEMERS, JACK C TRUSTEE  
1021 WALNUT ST

**Notes:**  
All R/W on this Sheet Described From Line "PR-A" Except as Shown.  
All Stationing off Line "PR-A" Unless Otherwise Noted.  
All Drives Shall Have 5' Radius Unless Otherwise Noted.

**Preliminary**

- R/W LEGEND**
- (1) Temp. R/W Req'd For Step/Sidewalk Constr. & Yard Grading
  - (2) Temp. R/W Req'd For Tree Removal
  - (3) Temp. R/W Req'd Drive Construction
  - (4) Temp. R/W Req'd For Sign Relocation

RECOMMENDED FOR APPROVAL		DATE
DESIGN ENGINEER		
DESIGNED: DAS	DRAWN: LLF	
CHECKED: JAW	CHECKED: DAS	

INDIANA  
DEPARTMENT OF TRANSPORTATION

CONSTRUCTION DETAILS  
STA. 45+40 TO STA. 47+80

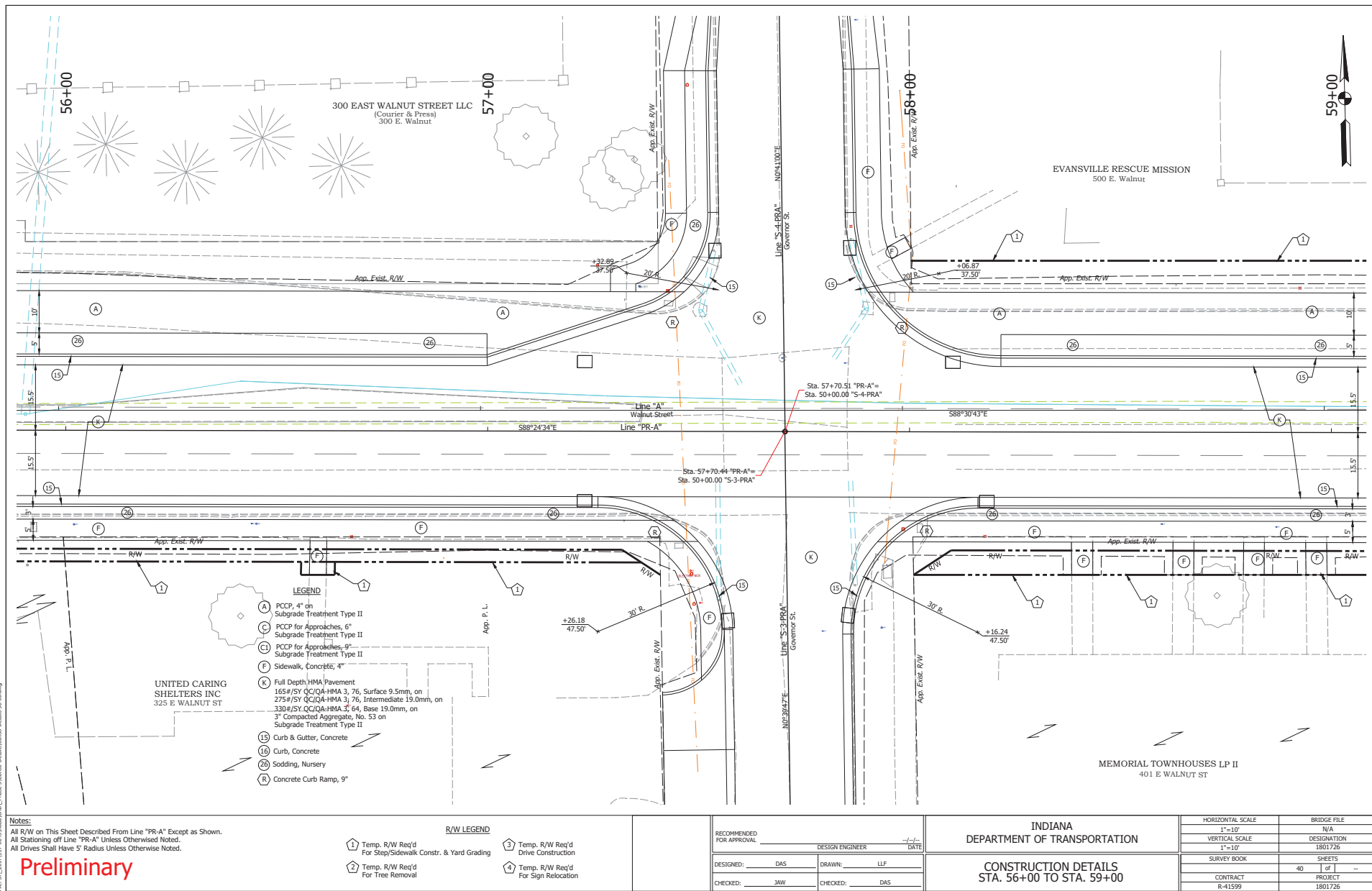
HORIZONTAL SCALE	BRIDGE FILE
1"=10'	N/A
VERTICAL SCALE	DESIGNATION
1"=10'	1801726
SURVEY BOOK	SHEETS
CONTRACT	36 of ---
R-41599	PROJECT
	1801726



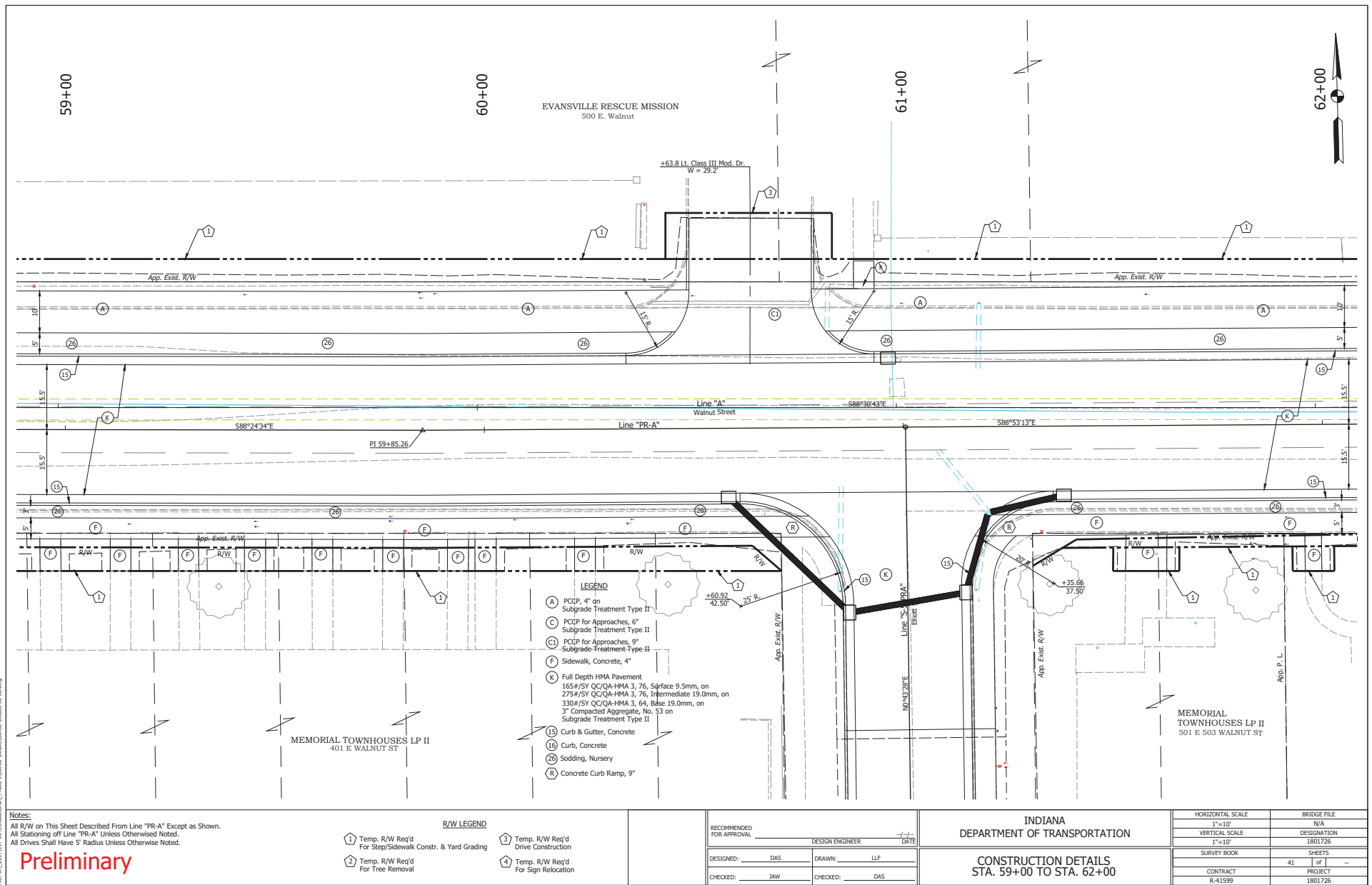




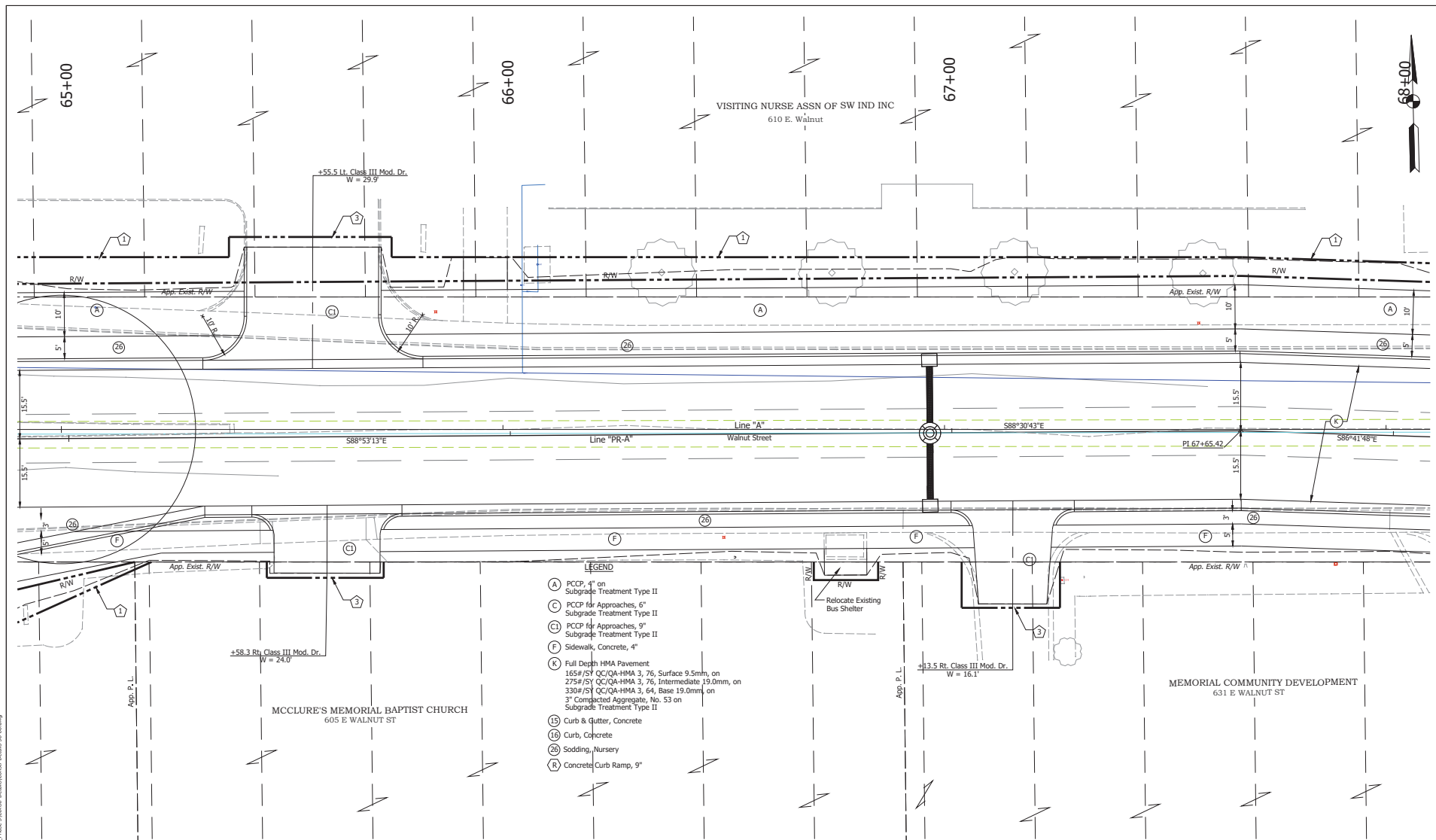
Order Date: 12/15/2021 3:27pm User Name: Designer  
File: S:\2021\117\K057\Road\CAO\_Phase 3\Center Detail\Center Detail\_S6-80.dwg



Quater File 15, 2021, 3:27pm User Name: design  
File: S:\2021\11\11\K057\Road\CACT Phase 3\Center Detail\Constr Details 56-68.dwg







**Notes:**  
 All R/W on this Sheet Described From Line "PR-A" Except as Shown.  
 All Stationing off Line "PR-A" Unless Otherwise Noted.  
 All Drives Shall Have 5' Radius Unless Otherwise Noted.

**Preliminary**

#### R/W LEGEND

- 1 Temp. R/W Req'd  
For Step/Sidewalk Constr. & Yard Grading
- 2 Temp. R/W Req'd  
For Tree Removal
- 3 Temp. R/W Req'd  
Drive Construction
- 4 Temp. R/W Req'd  
For Sign Relocation

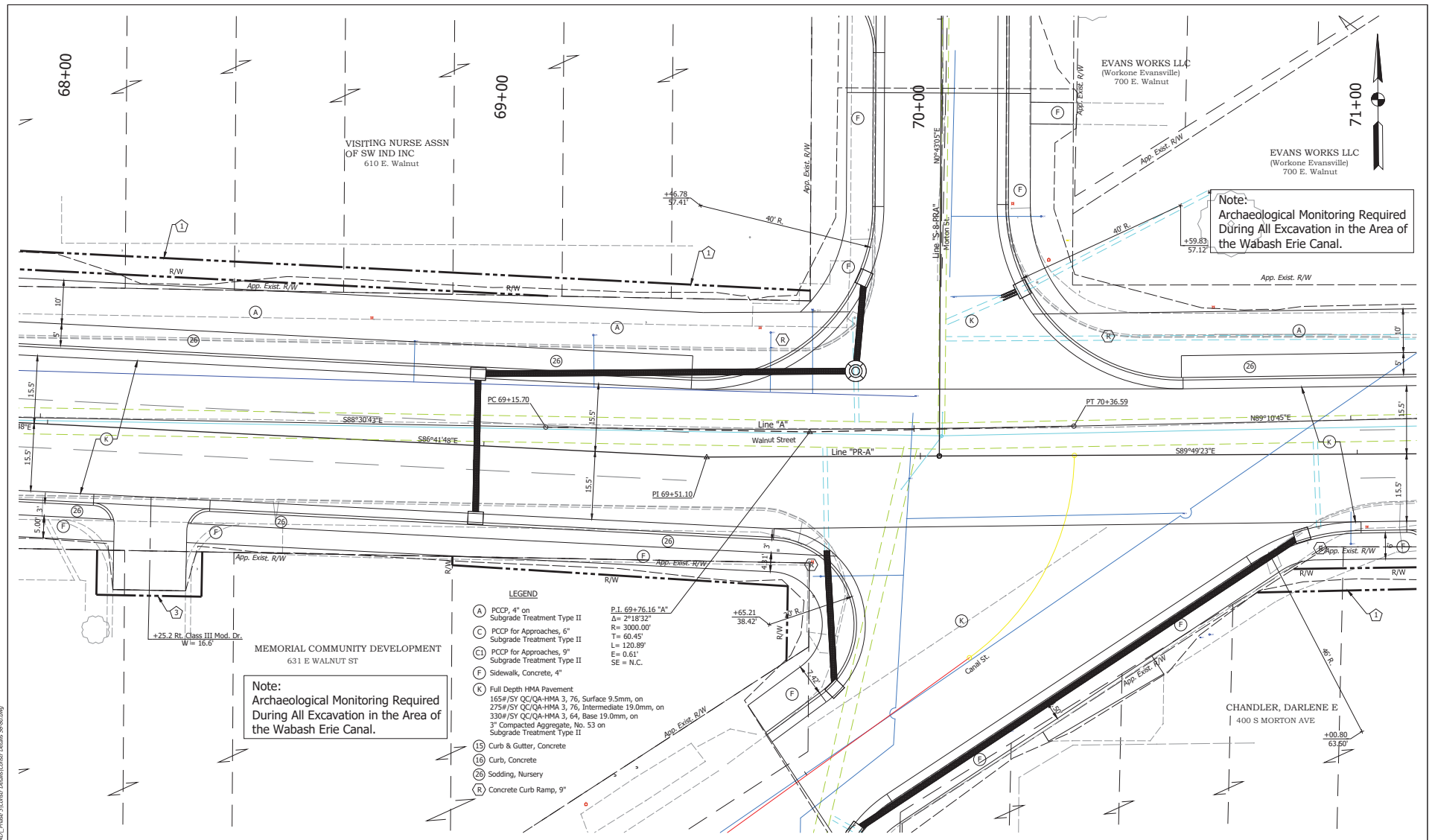
RECOMMENDED FOR APPROVAL	
DESIGNED: DAS	DRAWN: LLF
CHECKED: JAW	CHECKED: DAS

INDIANA  
DEPARTMENT OF TRANSPORTATION

CONSTRUCTION DETAILS  
STA. 65+00 TO STA. 68+00

HORIZONTAL SCALE	BRIDGE FILE
1"=10'	N/A
VERTICAL SCALE	DESIGNATION
1"=10'	1801725
SURVEY BOOK	SHEETS
CONTRACT	43 of 43
R-41599	PROJECT
	1801725

15' 15' 15'



Note:  
Archaeological Monitoring Required  
During All Excavation in the Area of  
the Wabash Erie Canal.

- LEGEND**
- (A) PCCP, 4" on Subgrade Treatment Type II
  - (C) PCCP for Approaches, 6" Subgrade Treatment Type II
  - (D) PCCP for Approaches, 9" Subgrade Treatment Type II
  - (F) Sidewalk, Concrete, 4"
  - (K) Full Depth HMA Pavement 165# / SY QC/QA-HMA 3, 76, Surface 9.5mm, on 275# / SY QC/QA-HMA 3, 76, Intermediate 19.0mm, on 330# / SY QC/QA-HMA 3, 64, Base 19.0mm, on 3" Compacted Aggregate, No. 53 on Subgrade Treatment Type II
  - (15) Curb & Gutter, Concrete
  - (16) Curb, Concrete
  - (26) Sodding, Nursery
  - (R) Concrete Curb Ramp, 9"
- P.I. 69+76.16 "A"  
L= 2918.32'  
R= 3000.00'  
T= 60.45'  
L= 120.89'  
E= 0.61'  
SE = N.C.

**Notes:**  
All R/W on This Sheet Described From Line "PR-A" Except as Shown.  
All Stationing off Line "PR-A" Unless Otherwise Noted.  
All Drives Shall Have 5' Radius Unless Otherwise Noted.

Preliminary

- R/W LEGEND**
- 1 Temp. R/W Req'd For Step/Sidewalk Constr. & Yard Grading
  - 2 Temp. R/W Req'd For Tree Removal
  - 3 Temp. R/W Req'd Drive Construction
  - 4 Temp. R/W Req'd For Sign Relocation

RECOMMENDED FOR APPROVAL	
DESIGN ENGINEER	DATE
DESIGNED: DAS	DRAWN: LLF
CHECKED: JAW	CHECKED: DAS

INDIANA  
DEPARTMENT OF TRANSPORTATION

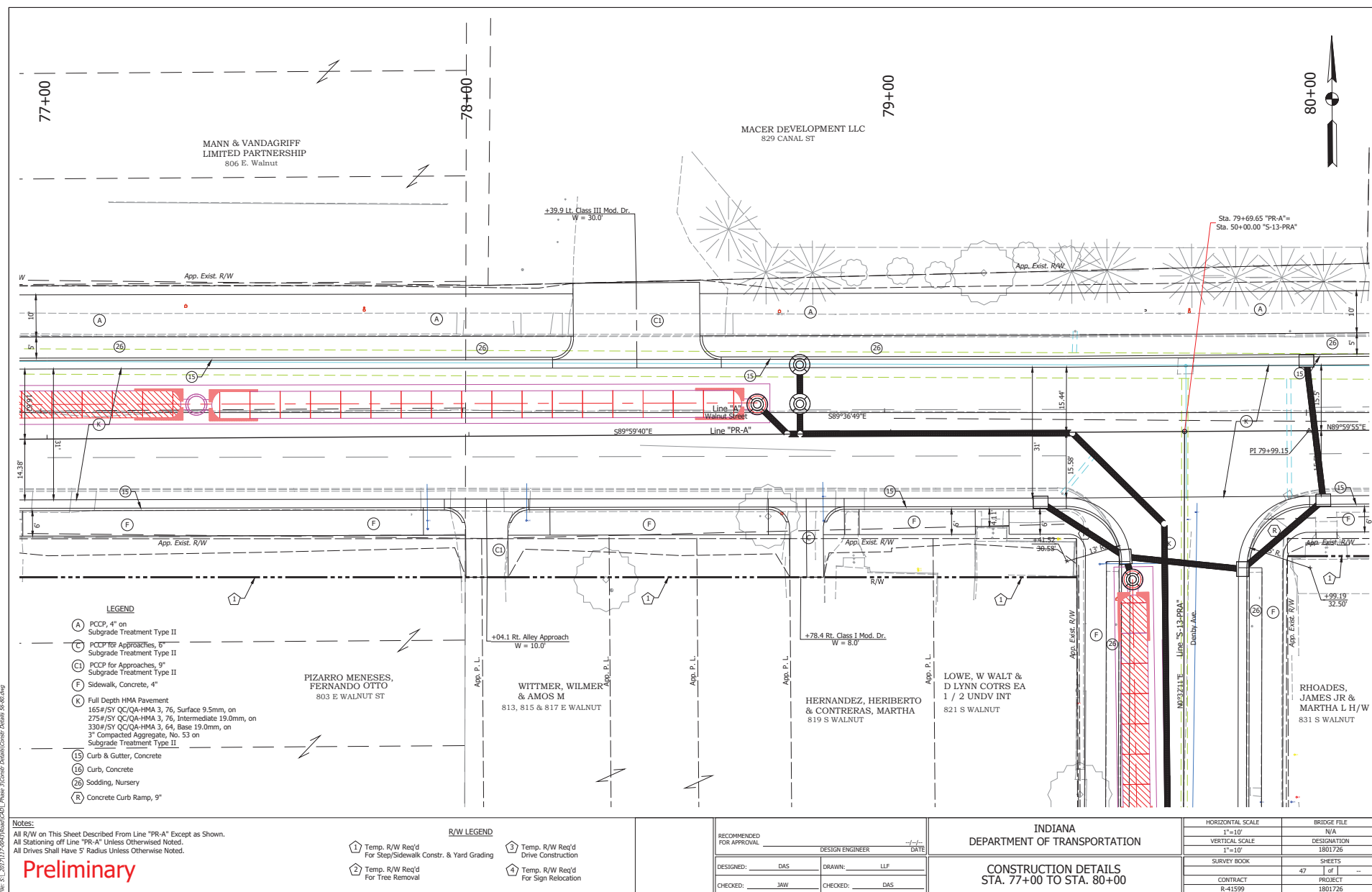
CONSTRUCTION DETAILS  
STA. 68+00 TO STA. 71+00

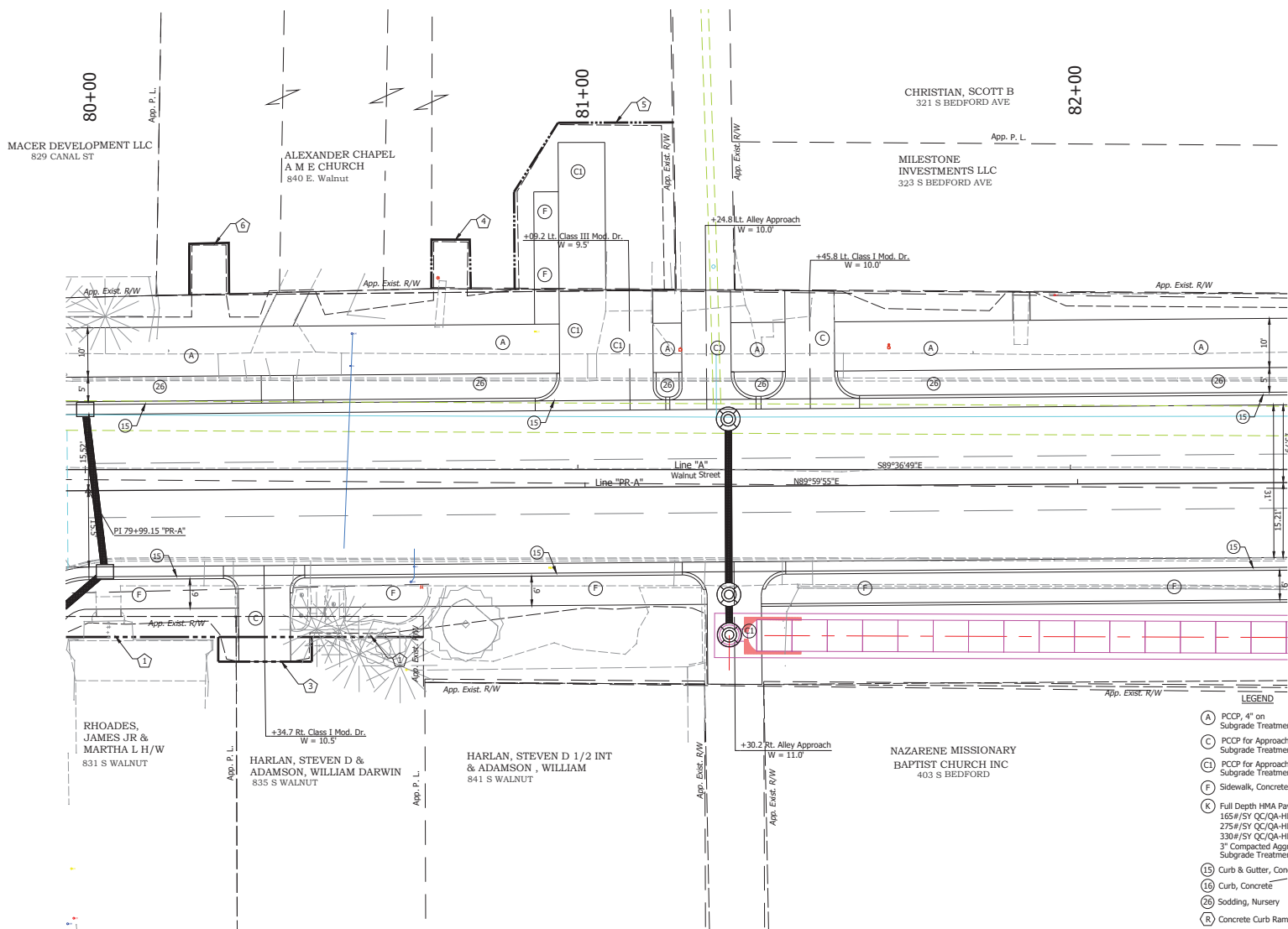
HORIZONTAL SCALE	BRIDGE FILE
1"=10'	N/A
VERTICAL SCALE	DESIGNATION
1"=10'	1801726
SURVEY BOOK	SHEETS
CONTRACT	44 of 1
R-41599	PROJECT
	1801726

Quater Date 12-15-2021 3:28pm User: jhansen Designer: jhansen  
File: S:\1801717\1801717\Drawings\CD\Phase 3\Center Detail\Center Details 56-68.dwg









- LEGEND**
- (A) PCCP, 4" on Subgrade Treatment Type II
  - (C) PCCP for Approaches, 6" Subgrade Treatment Type II
  - (C) PCCP for Approaches, 9" Subgrade Treatment Type II
  - (F) Sidewalk, Concrete, 4"
  - (K) Full Depth HMA Pavement  
165#/SY QC/QA-HMA 3, 76, Surface 9.5mm, on  
275#/SY QC/QA-HMA 3, 76, Intermediate 19.0mm, on  
330#/SY QC/QA-HMA 3, 64, Base 19.0mm, on  
3" Compacted Aggregate, No. 53 on  
Subgrade Treatment Type II
  - (15) Curb & Gutter, Concrete
  - (16) Curb, Concrete
  - (26) Sodding, Nursery
  - (R) Concrete Curb Ramp, 9"

**Notes:**  
 All R/W on this Sheet Described From Line "PR-A" Except as Shown.  
 All Stationing off Line "PR-A" Unless Otherwise Noted.  
 All Drives Shall Have 5' Radius Unless Otherwise Noted.

**Preliminary**

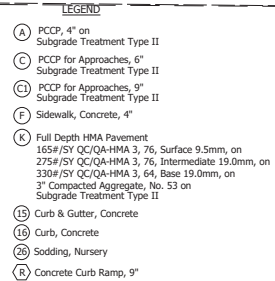
R/W LEGEND			
(1) Temp. R/W Req'd For Step/Sidewalk Constr. & Yard Grading	(3) Temp. R/W Req'd Drive Construction	(5) Temp. R/W Req'd For Drive and Sidewalk Construction	
(2) Temp. R/W Req'd For Tree Removal	(4) Temp. R/W Req'd For Sign Removal	(6) Temp. R/W Req'd For Sign Relocation	

RECOMMENDED FOR APPROVAL		DESIGN ENGINEER	DATE
DESIGNED:	DAS	DRAWN:	LLF
CHECKED:	JAW	CHECKED:	DAS

INDIANA  
 DEPARTMENT OF TRANSPORTATION  
 CONSTRUCTION DETAILS  
 STA. 80+00 TO STA. 82+40

HORIZONTAL SCALE	BRIDGE FILE
1"=10'	N/A
VERTICAL SCALE	DESIGNATION
1"=10'	1801725
SURVEY BOOK	SHEETS
CONTRACT	48 of 1
R-41599	PROJECT
	1801725





## Preliminary

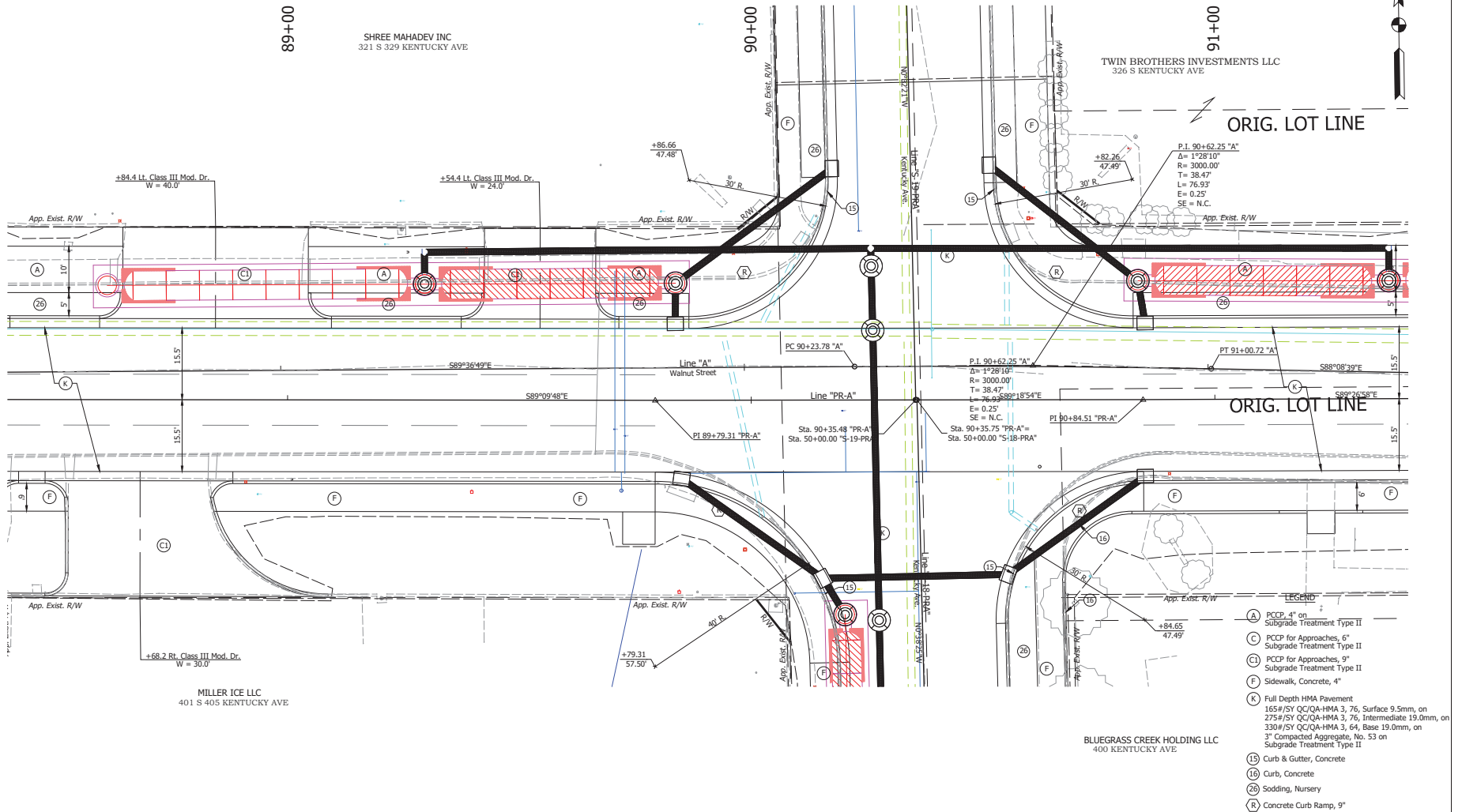
1 Temp. R/W Req'd For Step/Sidewalk Constr. & Yard Grading	3 Temp. R/W Req'd Drive Construction
2 Temp. R/W Req'd For Tree Removal	4 Temp. R/W Req'd For Sign Relocation

INDIANA  
DEPARTMENT OF TRANSPORTATION

---

CONSTRUCTION DETAILS  
STA. 85+40 TO STA. 88+40

HORIZONTAL SCALE	BRIDGE FILE		
1"=10'	N/A		
VERTICAL SCALE	DESIGNATION		
1"=10'	1801726		
SURVEY BOOK	SHEETS		
	50	of	--
CONTRACT	PROJECT		
R-41509	1801726		



**Notes:**  
 All R/W on this Sheet Described From Line "PR-A" Except as Shown.  
 All Stationing off Line "PR-A" Unless Otherwise Noted.  
 All Drives Shall Have 5' Radius Unless Otherwise Noted.

**Preliminary**

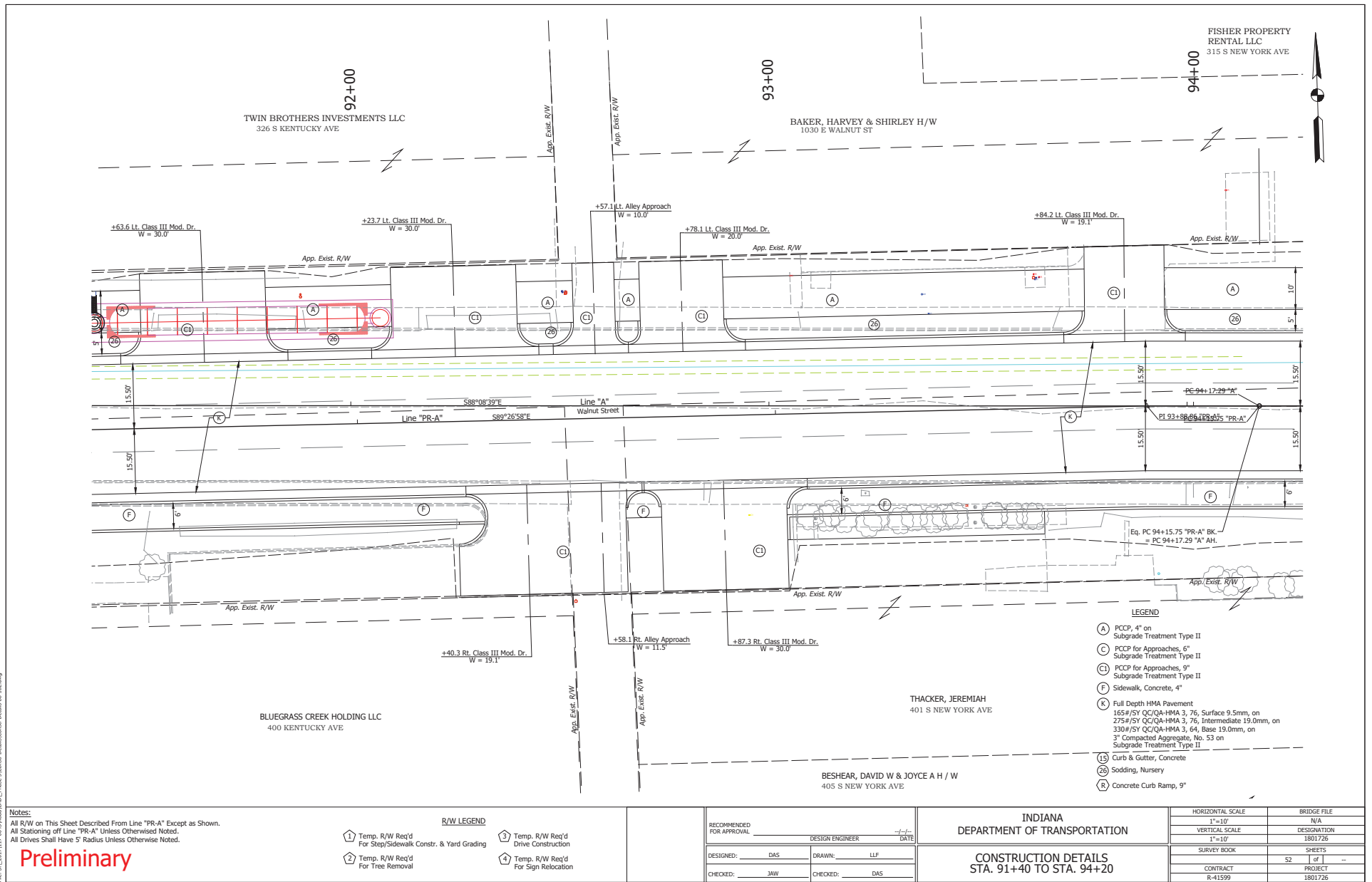
R/W LEGEND			
1	Temp. R/W Req'd For Step/Sidewalk Constr. & Yard Grading	3	Temp. R/W Req'd Drive Construction
2	Temp. R/W Req'd For Tree Removal	4	Temp. R/W Req'd For Sign Relocation

RECOMMENDED FOR APPROVAL	DESIGN ENGINEER	DATE
DESIGNED: DAS	DRAWN: LLF	
CHECKED: JAW	CHECKED: DAS	

INDIANA  
 DEPARTMENT OF TRANSPORTATION  
 CONSTRUCTION DETAILS  
 STA. 88+40 TO STA. 91+40

HORIZONTAL SCALE	BRIDGE FILE
1"=10'	TWA
VERTICAL SCALE	DESIGNATION
1"=10'	1801726
SURVEY BOOK	SHEETS
CONTRACT	51 of 1801726
R-41599	PROJECT

Order Date: 12/15/2021 3:45pm User: jhansen Designer: jhansen  
File: S:\2021\117\K057\Road\CACT Phase 3\Center Detail\Center Detail 80-102.dwg



Spl. Public Road Approach Sta. 94+76.5, 71.6' LT. Spl. Public Road Approach Sta. 94+79.6, 73.0' RT.

FISHER PROPERTY  
RENTAL LLC  
315 S NEW YORK AVE

BAKER, HARVEY  
& SHIRLEY H/W  
1030 E WALNUT ST

NEW ODYSSEY  
INVESTMENTS LLC  
1100 E WALNUT ST

ORIG

ORIG

LEGEND

- (A) PCP, 4" on Subgrade Treatment Type II
- (C) PCP for Approaches, 6" Subgrade Treatment Type II
- (L) PCP for Approaches, 9" Subgrade Treatment Type II
- (F) Sidewalk, Concrete, 4"
- (K) Full Depth HMA Pavement 165#/SY QC/QA-HMA 3, 76, Surface 9.5mm, on 275#/SY QC/QA-HMA 3, 76, Intermediate 19.0mm, on 330#/SY QC/QA-HMA 3, 64, Base 19.0mm, on 3" Compacted Aggregate, No. 53 on Subgrade Treatment Type II
- (15) Curb & Gutter, Concrete
- (26) Sodding, Nursery
- (R) Concrete Curb Ramp, 9"

Notes:  
All R/W on this Sheet Described From Line "A" Except as Shown.  
All Stationing off Line "A" Unless Otherwise Noted.  
All Drives Shall Have 5' Radius Unless Otherwise Noted.

Preliminary

R/W LEGEND

- (1) Temp. R/W Req'd For Step/Sidewalk Constr. & Yard Grading
- (2) Temp. R/W Req'd For Tree Removal
- (3) Temp. R/W Req'd Drive Construction
- (4) Temp. R/W Req'd For Sign Relocation

RECOMMENDED FOR APPROVAL	DESIGN ENGINEER	DATE
DESIGNED: DAS	DRAWN: LLF	
CHECKED: JAW	CHECKED: DAS	

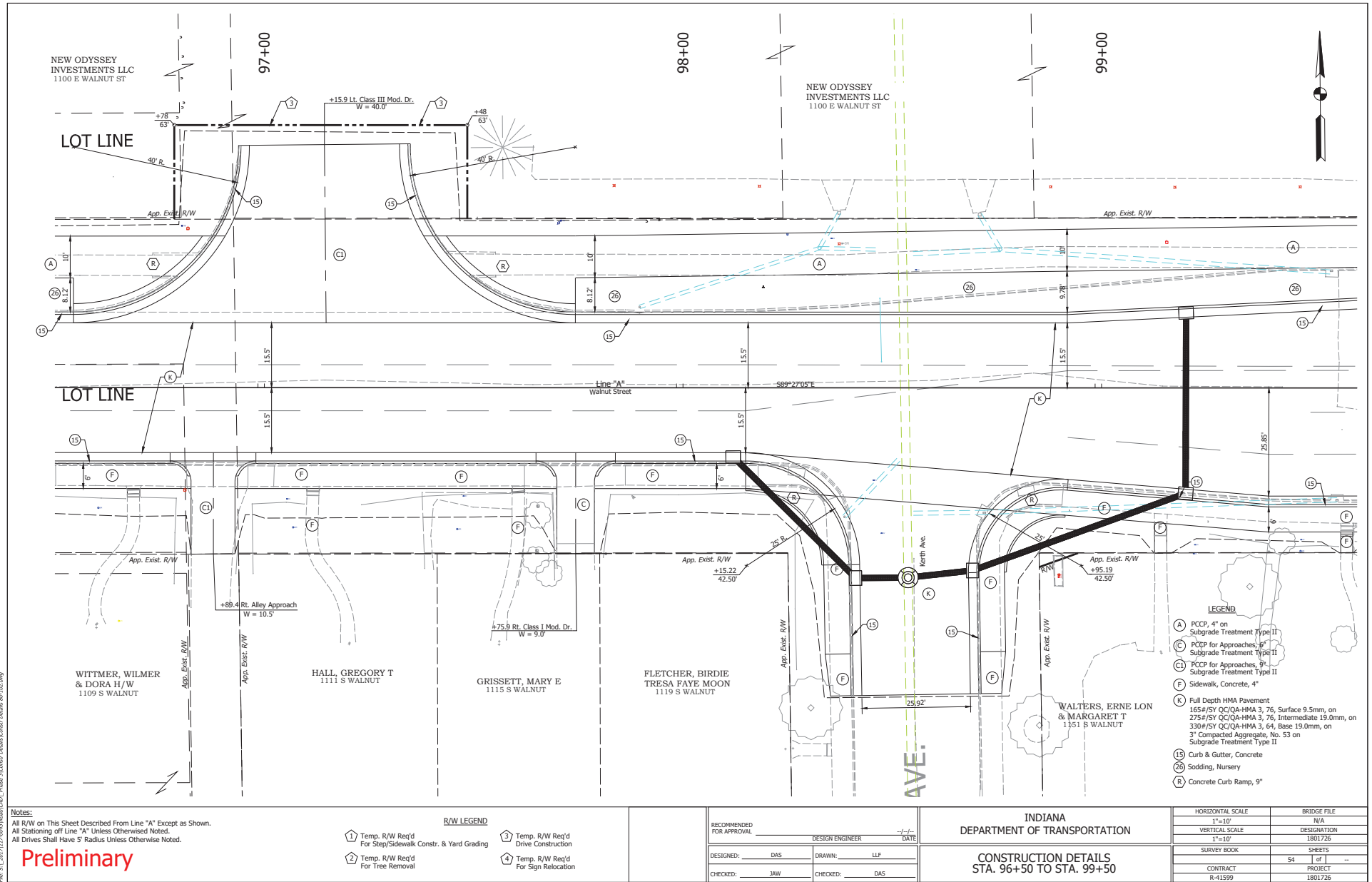
INDIANA  
DEPARTMENT OF TRANSPORTATION

CONSTRUCTION DETAILS  
STA. 94+20 TO STA. 96+50

HORIZONTAL SCALE	BRIDGE FILE
1"=10'	N/A
VERTICAL SCALE	DESIGNATION
1"=10'	1801726
SURVEY BOOK	SHEETS
CONTRACT	53 of 1
R-41599	PROJECT
	1801726

Spl. Public Road Approach  
Sta. 97+15.9, 58.1 Lt.

Spl. Public Road Approach  
Sta. 98+57.3, 73.3 Rt.



Order File: 12\_2021\_3-Phase\_Letter\_Planet\_designs  
File: S:\2021\12\_2021\_3-Phase\_Letter\_Planet\_designs\2021\_Phase\_3\Center\_Drill\Center\_Details\_R-4102.dwg

