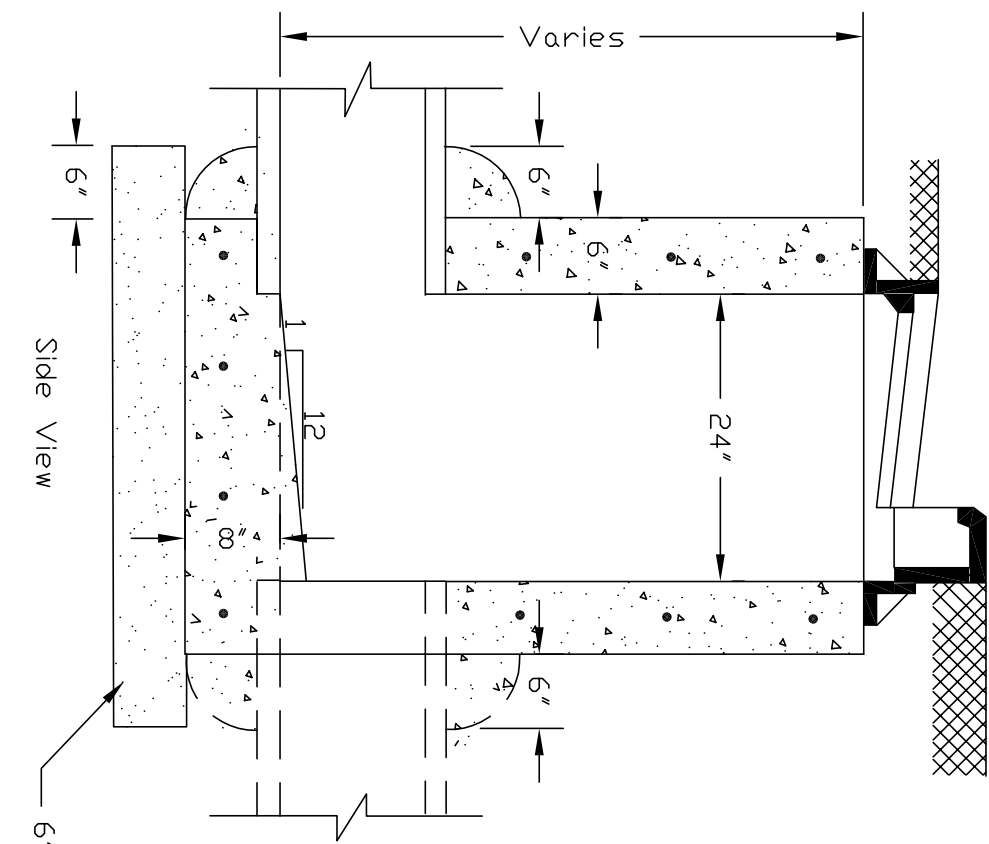
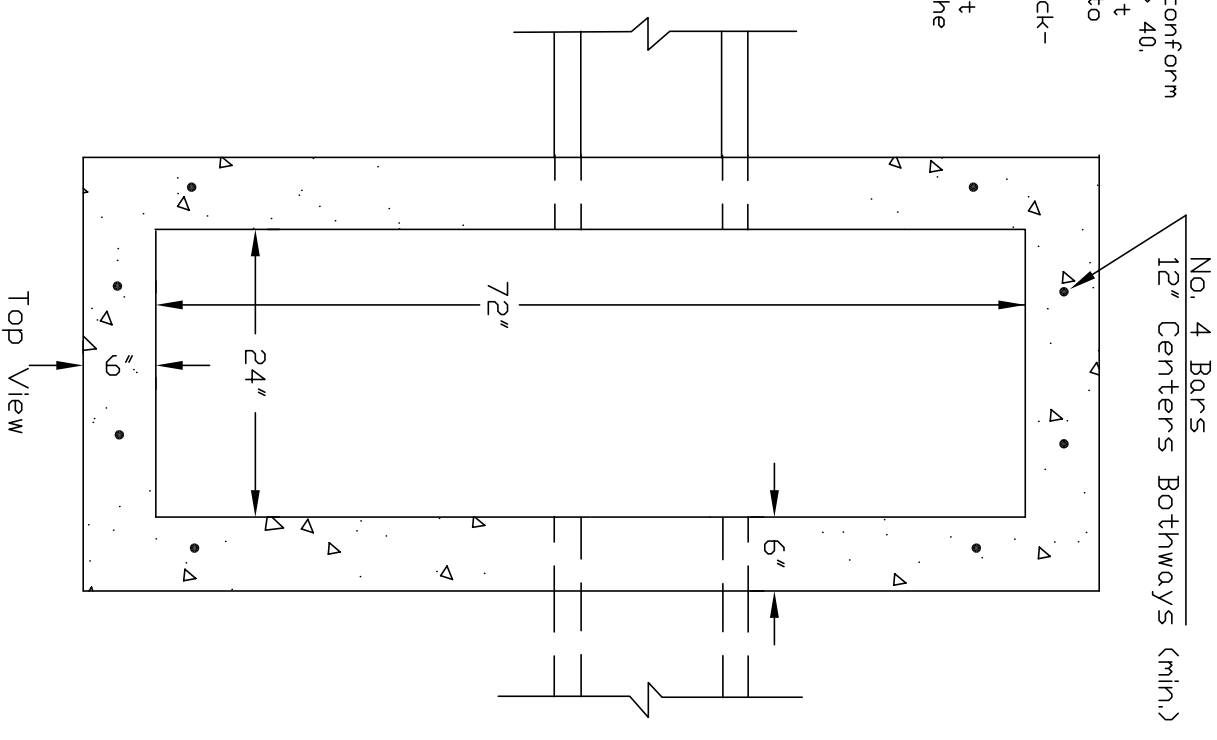


- ## NOTES:
- 1.) See Plans for casting size and type.
 - 2.) All connecting pipes shall be grouted with a 6" concrete collar with 3500 psi concrete.
 - 3.) Reinforcement shall conform to ASTM A-615, Grade 40. Concrete for precast units shall conform to ASTM C-478.
 - 4.) The inlet shall be back-filled per plans and specifications.
 - 5.) The cost of the inlet shall include all of the above items.



No. 53 Stone
or "B" Borrow



A vertical sequence of 15 geometric symbols, each a variation of a hexagon or octagon with different internal line patterns. The symbols are arranged in a single column, with some having horizontal lines, some having vertical lines, and some having diagonal lines or no internal lines at all.

Precast Rectangular Curb Inlet
Scale: None (Rev. Date 05/30/06)