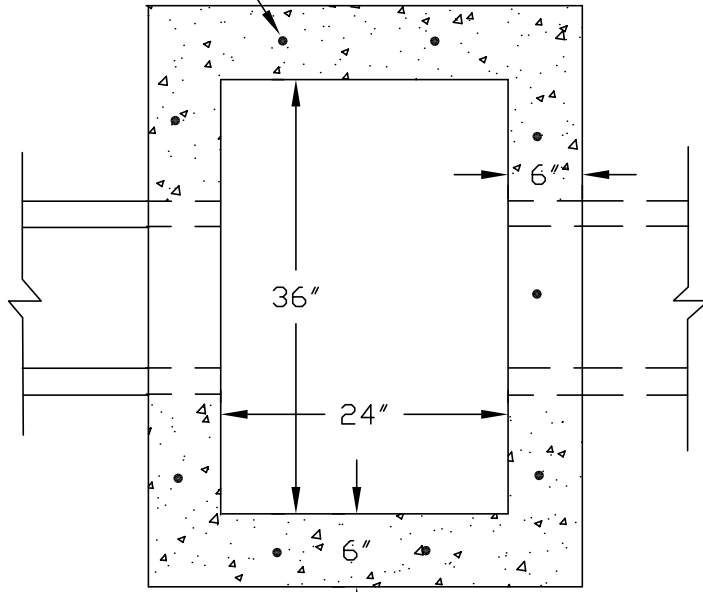


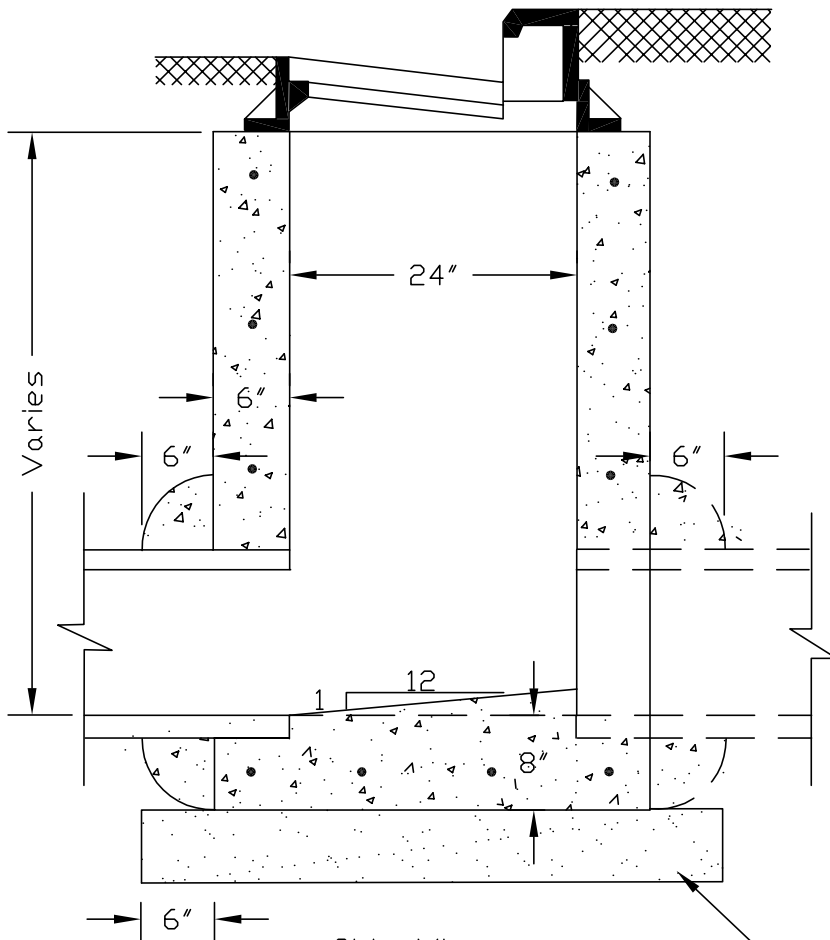
No. 4 Bars  
12" Centers Bothways (min.)



Top View

NOTES:

- 1.) See Plans for casting size and type.
- 2.) All connecting pipes shall be grouted with a 6" concrete collar with 3500 psi concrete.
- 3.) Reinforcement shall conform to ASTM A-615, Grade 40. Concrete for precast units shall conform to ASTM C-478.
- 4.) The inlet shall be back-filled per plans and specifications.
- 5.) The cost of the inlet shall include all of the above items.



Side View

6" - No. 53 Stone or "B" Borrow

# Detail A-6

Precast Rectangular Curb Inlet  
Scale 3/4"=1' (Rev. Date 09/01/04)