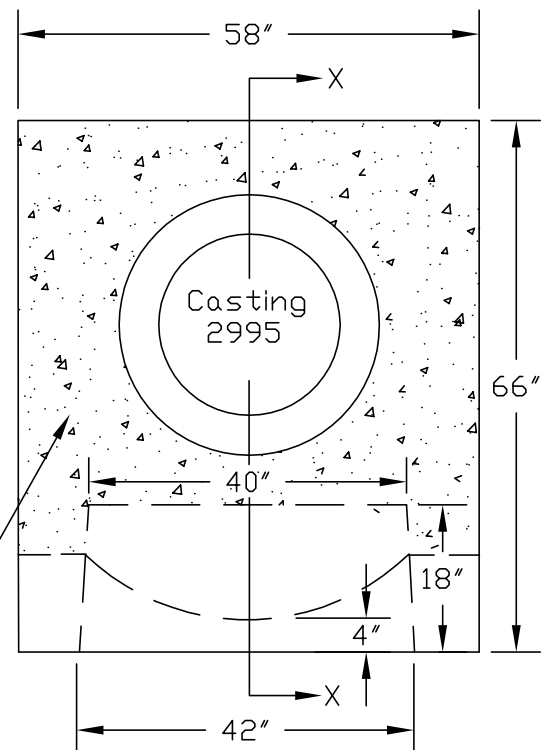
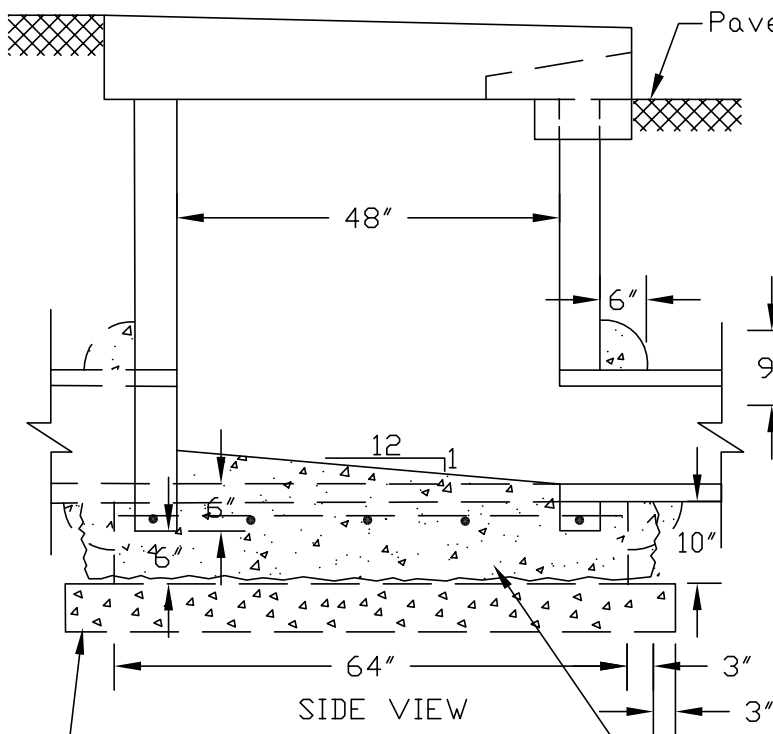


TOP VIEW

Precast Inlet Top
5000 psi Conc. Req'd
No. 4 Bars Welded
on 6" Centers



INLET TOP

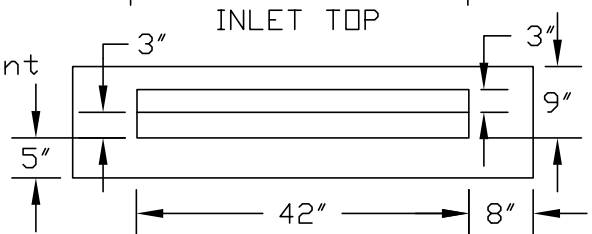


SIDE VIEW

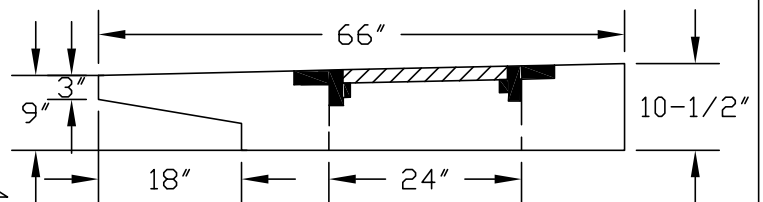
6" No. 53 Crushed Stone
(For Precast Bottom Only)

Precast Bottom (10"x64") with
No. 4 Bars 6" Centers
Bothways.

Poured Bottom (12"x70")



FRONT VIEW



SECTION X-X

NOTES:

- 1.) Use Casting Type 2995 (East Jordan).
- 2.) Concrete for poured base and concrete collars shall be 3500 psi concrete. Precast concrete shall conform to ASTM C-478.
- 3.) Base may be precast or poured in place concrete. When precast base is used, a 6" base of #53 crushed stone will be required. All connecting pipes shall be grouted with a 6" concrete collar.
- 4.) The inlet shall be backfilled per plans and specifications.
- 5.) The cost of the inlet shall include all of the above items.

DETAIL B-1

Special Curb Inlet

Scale 1/2"=1' (Rev. Date 09/01/04)