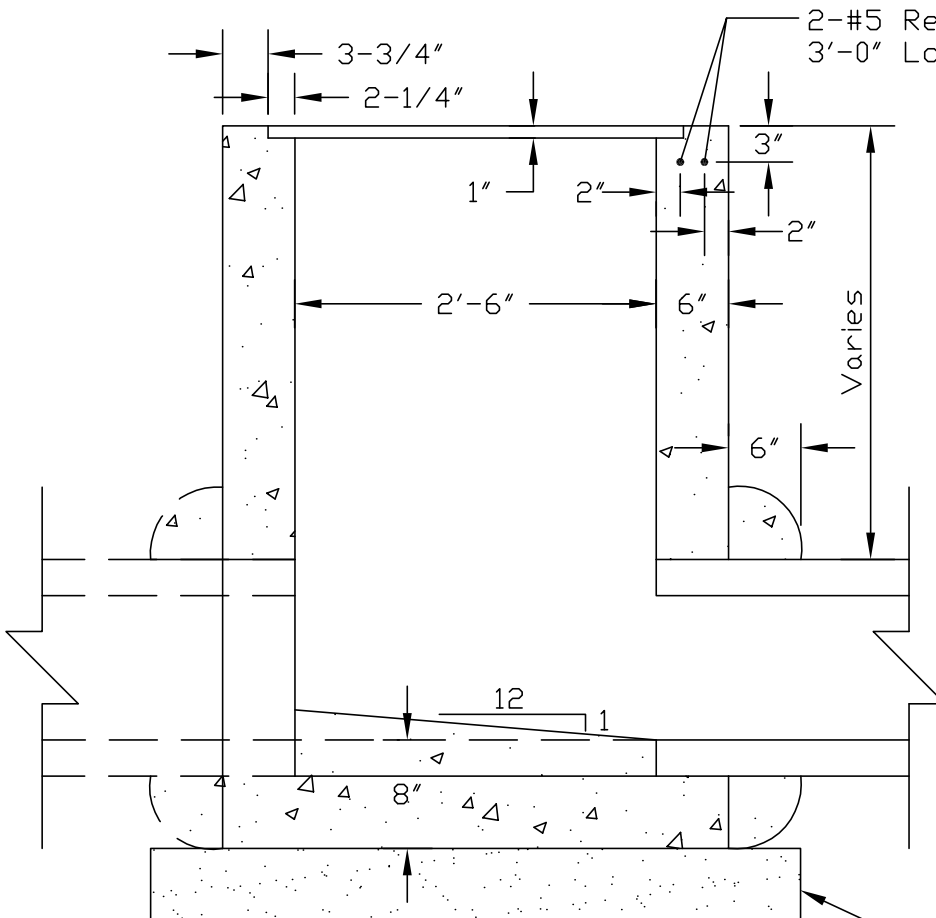


TOP VIEW



SIDE VIEW

NOTES:

- 1.) See Plans for casting size and type.
- 2.) All connecting pipes shall be grouted with a 6" concrete collar with 3500psi concrete.
- 3.) Reinforcement shall conform to ASTM-615, Grade 40. Concrete for precast units shall conform to ASTM C-478.
- 4.) The inlet shall be backfilled per plans and specifications.
- 5.) The cost of the inlet shall include all of the above items.

DETAIL B-7

Precast 2'-6" Square Inlet
 Scale 3/4"=1' (Rev. Date 09/01/04)