

VANDERBURGH COUNTY JAIL

FEASIBILITY STUDY

JAIL UPDATE MEETING



June 27, 2018

VANDERBURGH COUNTY

1. Update to questions raised at the May 31, 2018 Meeting
2. Anticipated Project Schedule
3. Project Funding Options
4. Project Schedule Impact
5. Single Story Jail Design Option
6. Classification Breakdown Scenario
7. Next Steps

VANDERBURGH COUNTY

1. If the Court System added more judges, courtrooms or prosecutors would it provide an increased “throughput” and thus limit the jail inmate headcount?
 - A. **RQAW, as part of their Study, asked the question; “Is there anything the Vanderburgh County Court System could do differently to reduce the number of people in Jail?”, and their summation was that the Court System was doing everything possible.**
 - B. **Average Daily Population (ADP) is minimal – average is 19 days (one of the lowest in the State.)**
 - C. **Many Counties only hold Court Sessions 2 times a week; Vanderburgh holds Court Sessions Daily.**
 - D. **Vanderburgh County is using ALL Programs and Processes available to impact the number of people incarcerated.**
 - E. **Feedback from the Public Defender’s Office indicated there was a deliberate effort (on their part) to move people through the “system” as quickly as possible.**
 - F. **Judges set bonds as low as possible to minimize Jail stay.**

VANDERBURGH COUNTY

2. A spike in inmate population may occur when more beds are available. Data available does not clearly validate a spike in 2006 when the existing jail was opened.

AVERAGE DAILY POPULATION BY MONTH

Year	JAN	FEB	MAR	APR	MAY	JUNE	JUL	AUG	SEPT	OCT	NOV	DEC	AVG
2005					450	476	501	521	512	492	492	482	
2006	480	484	500	492	518	514	513	529	534	526	511	572	
2007	567	516	510	485									

3. Is it constitutionally acceptable to house level 6 inmates in a county jail?
 - A. **Yes – Confirmed by the County Attorney.**

VANDERBURGH COUNTY

4. Need to identify costs to renovate the existing jail to correct issues.

A. \$3mm included in the Project Cost.

Included are costs for the following:

- Showers
- Sprinklers
- Light Fixtures
- HVAC
- Security Upgrades
- General Maintenance Upgrade
- Storage Addition
- Intake & Booking/Juvenile/Medical Expansion

VANDERBURGH COUNTY

5. It was accepted that the four story jail addition was conceptual and other options could be considered. It was confirmed there is plenty of land available for expansion.
6. Estimate possible increased bond issuance costs. - Attached
7. Develop a timeline for the project. - Attached
8. Determine what size addition we can actually afford to construct and operate with the county portion of LOIT.
 - A. **There is dedicated tax money (LOIT) available – as much as \$4mm a year that could be applied towards a Bond.**
 - B. **If it takes 3-4 years to complete this Project \$8-12mm could be “in the bank” already.**
 - C. **\$2.5mm will support a \$40mm Project**
 - D. **\$2.7mm will support a \$45mm Project**
 - E. **\$3.0mm will support a \$49 mm Project**
9. The State has authorized counties to implement and raise tax funds for jails.
 - A. **Local Officials to determine if they want to raise Taxes if more funds are necessary.**
 - B. **Up to 0.2% tax may be implemented for construction of a jail.**
 - C. **This equates to a maximum of \$8mm annually.**

VANDERBURGH COUNTY

Project Schedule

9/1/18 - Start Design

3/1/19 - Construction Estimate to start Bond Process

6/1/19 - Let Bonds

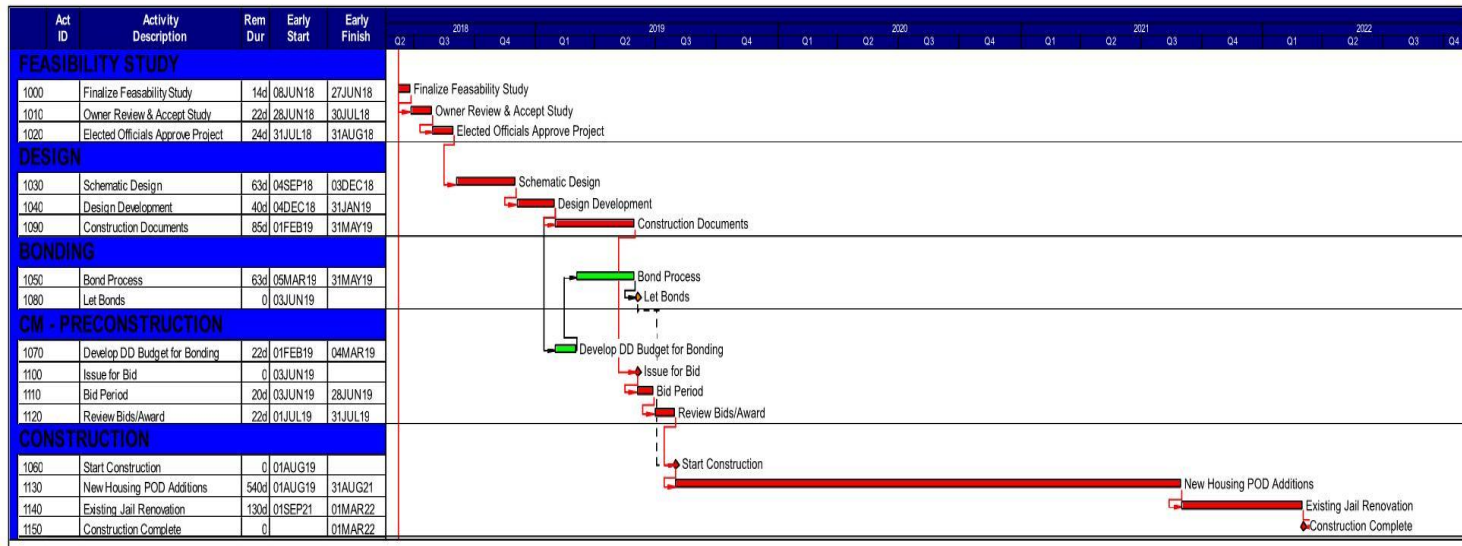
6/1/19 - Bid Project

8/1/19 - Start Construction

8/1/21 - Construction Complete

9/1/21 - Start Renovation

3/1/22 - Renovation Complete



VANDERBURGH COUNTY

Current Jail Population (June 25, 2018)

Inmates Detained by Vanderburgh County
(In county 651/Out of county 146) = 797

20% Classification

Beds Required to Properly Classify = $797 / .8$ = 997

Rated Detention Housing Beds Available = 512

Deficiency = 485

VANDERBURGH COUNTY

Vanderburgh County Jail – Expansion Options & Funding Requirements

\$3.9 million annual LOIT Funds available – Additional Tax of up to 0.2% (\$8 million annually) available

Option #	Expansion # of Beds	Project Description	Project Costs (Median)	Project Cost Annual Payment (30 years)	Additional Operational Cost (Annual)	Total Project Cost (Annual)	Additional Funding Required (Annual)	Additional Tax Required
A*	900	3 housing pods of up to 300 beds each + 1 future pod expansion shell	\$60.8 million	\$3.8 million	\$4.1 million	\$7.9 million	\$4 million	0.1%
B	600	2 housing pods of up to 300 beds each	\$38.9 million	\$2.4 million	\$2.7 million	\$5.1 million	\$1.2 million	0.03%
C	450	1 1/2 housing pods of up to 300 beds each + 1/2 future pod expansion shell	\$34.6 million	\$2.1 million	\$2.7 million	\$4.8 million	\$0.9 million	0.02%
D	300	1 housing pod of up to 300 beds + shell	\$29.5 million	\$1.9 million	\$1.5 million	\$3.4 million	-\$0.5 million	
E	300	1 housing pod of up to 300 beds	\$23.7 million	\$1.4 million	\$1.5 million	\$2.9 million	-\$1 million	

*Option A is the recommendation that resulted from the recently completed (2018) RQAW Study

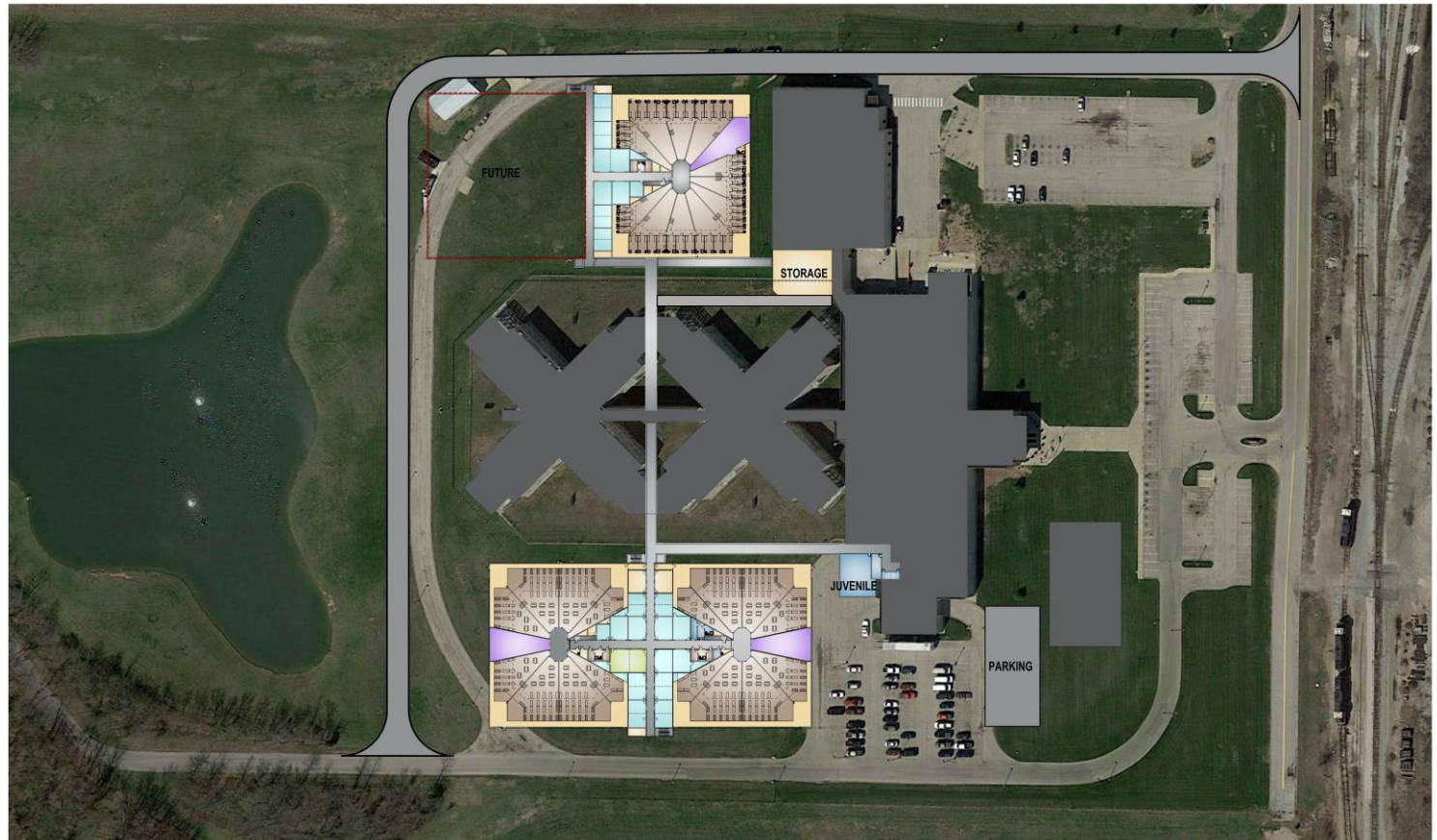
** ALL OPTIONS INCLUDE \$3 million for Existing Facility Upgrades, Storage Addition and Intake/Juvenile/Medical Expansion

VANDERBURGH COUNTY

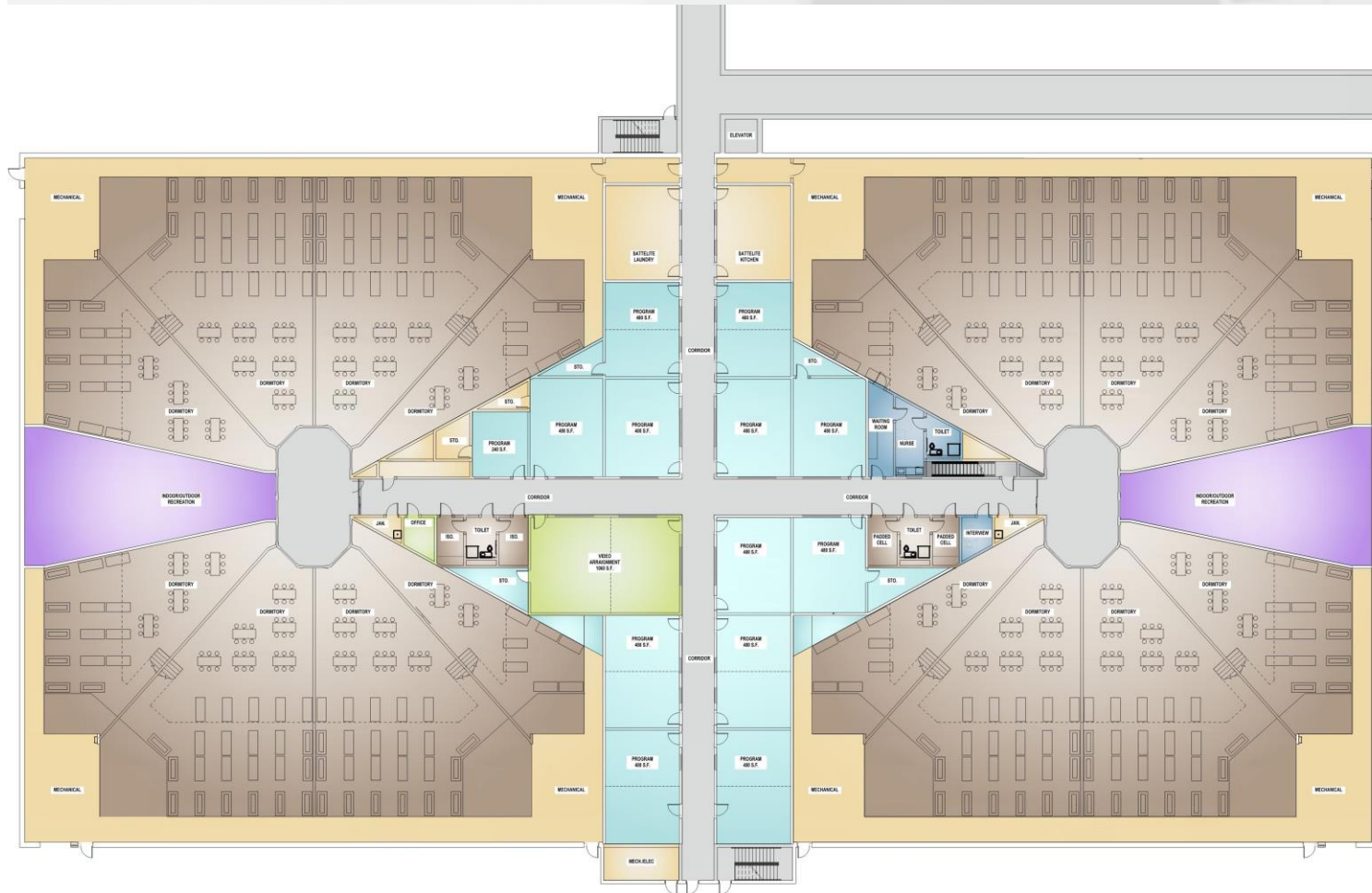
Impact of Delays in Project Schedule:

1. Continue to House Inmates Out of County
 - A. >\$150,000 Per Month=>\$1.9mm per year
 - i. Based on 150 inmates @ \$35/day
 - B. Additional Transportation costs (Staff & Vehicles)
2. Construction Cost Increase
 - A. 4-7% Annually
 - i. Median Increase of \$1.65mm Annually on a \$30mm Project
3. Interest Rate Increase
 - A. \$100,000 Per Month=\$1.2mm per year
 - i. Based on 1% increase on \$30mm over 30 years
4. House Bill 1263
 - A. Interlocal Agreement for a Regional Jail
 - B. New Feasibility Study/Public Hearing

VANDERBURGH COUNTY

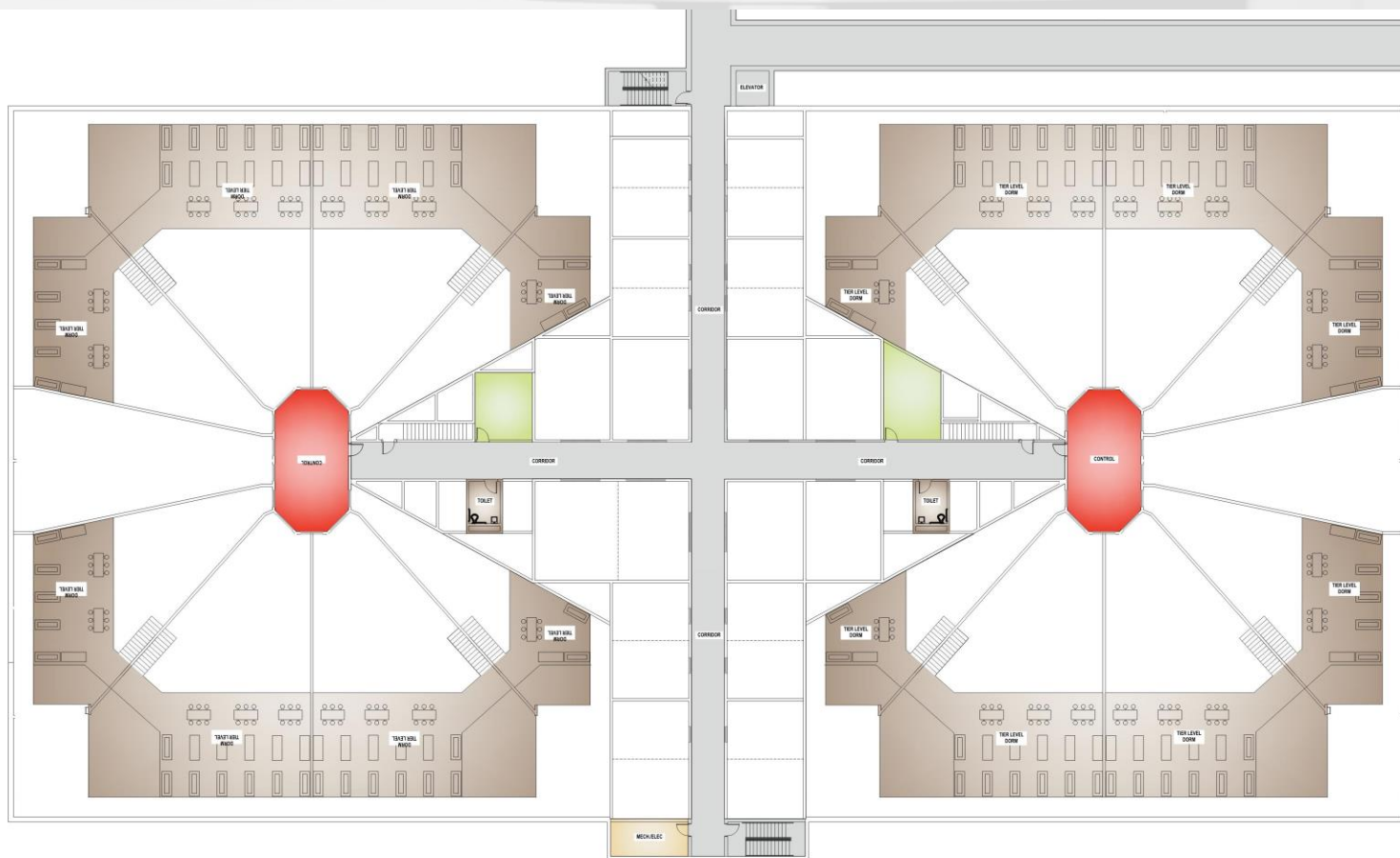


VANDBURGH COUNTY JAIL – EXPANSION 1ST FLOOR



VANDERBURGH COUNTY

VANDERBURGH COUNTY JAIL – EXPANSION 1ST FLOOR MEZZANINE



VANDERBURGH COUNTY

- One Day Snapshot - Classification

Vanderburgh County Sheriff's Office and Jail Feasibility Study

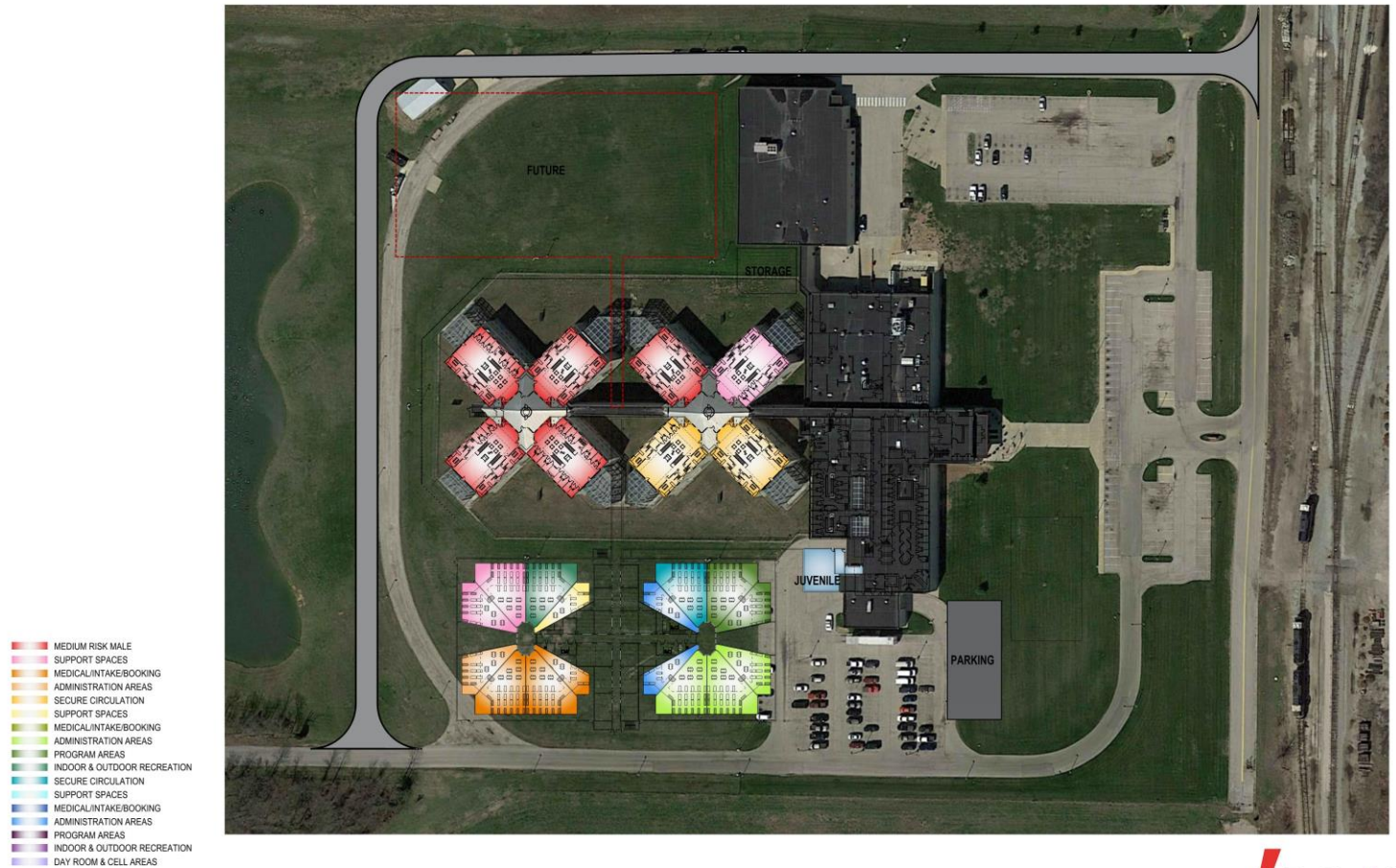
Types of Housing Unit Classifications and Population on 1/31/18

	Types of Housing Unit Classification	Numbe of Inmates
	Medium Risk Male Existing Housing (MRM)	240
	Medium Risk Female Existing Housing (MRF)	64
	Honor Dorm Male (HDM)	69
	Honor Dorm Female (HDF)	18
	L6 DOC Ineligible Male (DIM)	63
	L6 DOC Ineligible Female (DIF)	11
	Suicide - Mental Health	18
	High Risk Existing Housing Male (HRM)	75
	B1 Problem Unit (cooling off) (B1)	20
	Inmate Worker (IW)	36
	Special Management (ChoMO-Weak) (SM)	38
	Booking/Holding (H)	63
	Segregation Male (SGM)	16
	Segregation Female (SGF)	1
	Medical (M)	10
	Juvenile Male (JM)	4
	Juvenile Female (JF)	0
	Total Inmates	746

Rated Existing Detention Housing Bed Capacity = 512

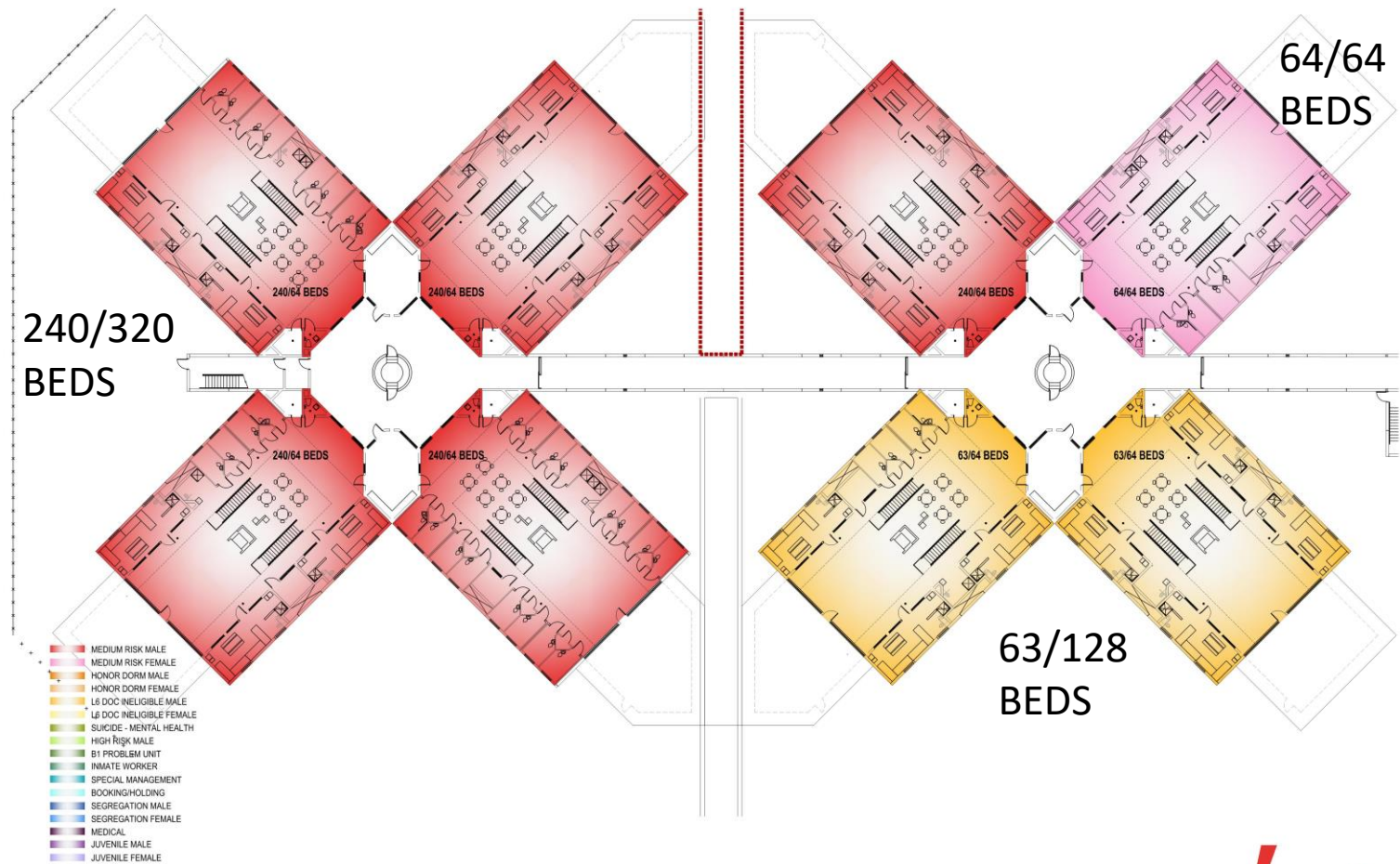
VANDERBURGH COUNTY

One Day Snapshot - Classification



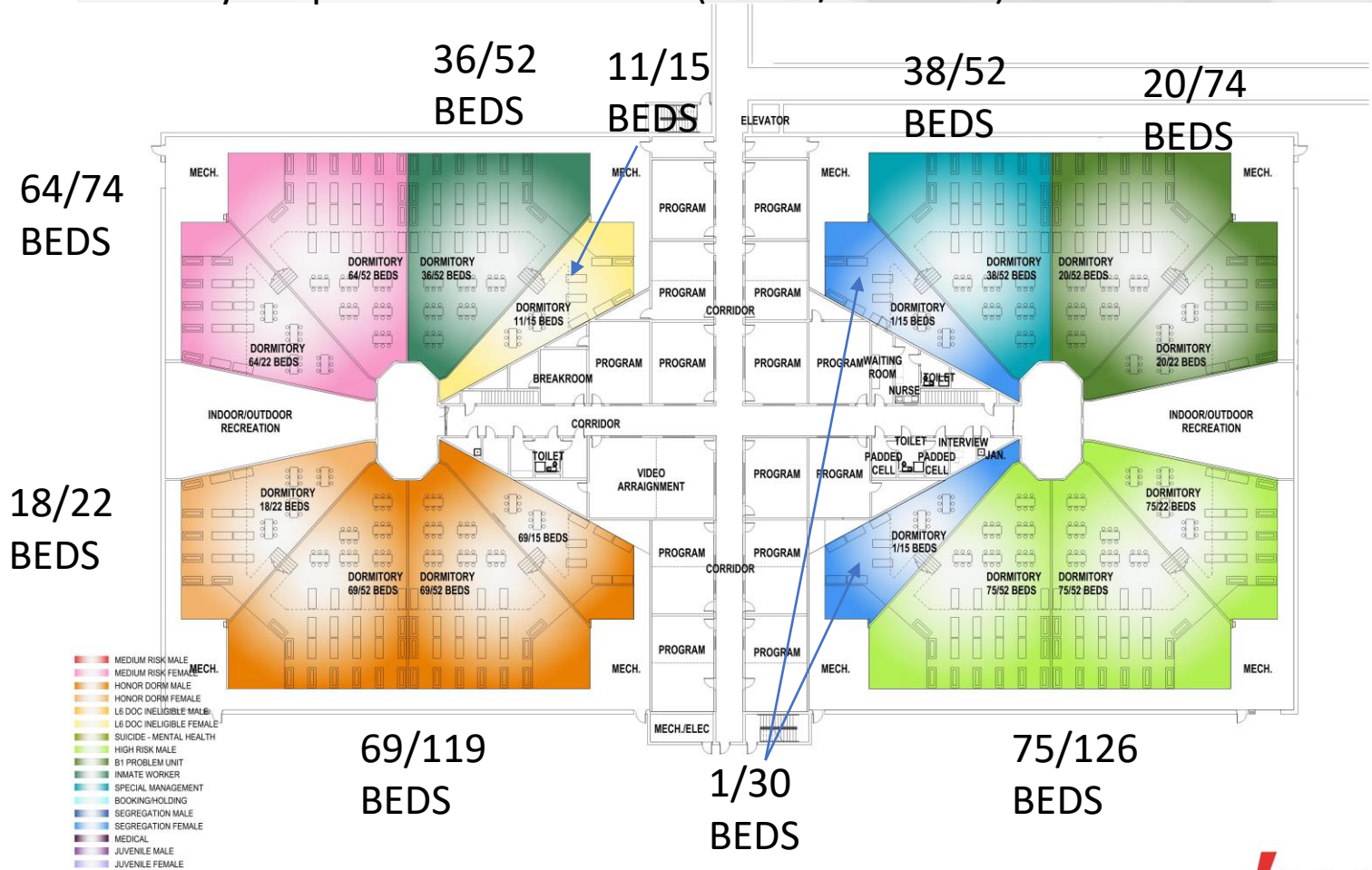
VANDERBURGH COUNTY

One Day Snapshot – Classification (Actual/Available)



VANDERBURGH COUNTY

One Day Snapshot – Classification (Actual/Available)



VANDERBURGH COUNTY

Next Steps (prior or Sept. 1, 2018)

1. Close/finalize the Blue Ribbon Committee
 - A. BRC Resolution
2. Follow-up on DOC Response
3. Commissioner Approval
4. Council Approval
5. A/E Selection
6. CM Selection