



Contractor Outreach

FEBRUARY 13, 2019

Agenda

Welcome and Background

Introductions

REFRESH Evansville

Water Plant Projects

RENEW Evansville

Non-IOCP Projects

Minority/Women Business Enterprise Program Overview

Purchasing and Local Requirements

Open Question and Answer

Welcome and Background

OUR MISSION

The Evansville Water & Sewer Utility will provide the Evansville metro area with high quality, safe, dependable water and sewer service at rates which encourage economic development. The Utility will manage land and water resources to ensure quality for future generations.

Welcome and Background

ASSETS

60 MGD Water Treatment Plant serving 60,000 customers

1,000 miles of water main; 6,000 fire hydrants; 7 booster stations; 8 storage tanks

60% cast iron pipes with an average age of over 90 years

504 miles of sanitary sewer; 318 miles of combined sewer; 92 lift stations

18 MGD east & 21.7 MGD west wastewater treatment plants

Introductions

Evansville Water & Sewer Utility

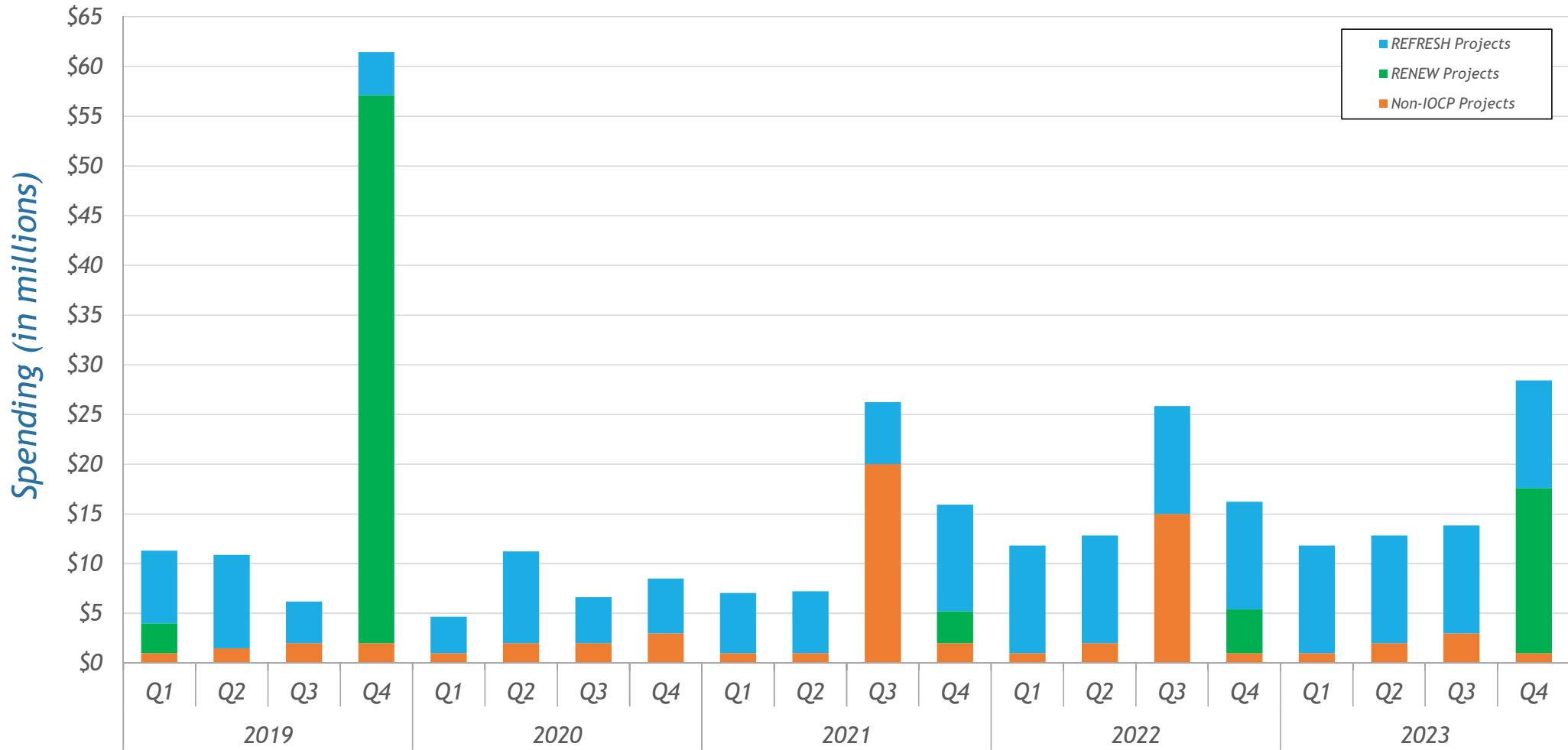
- Allen Mounts – Director
- Mike Labitzke – Deputy Director of Program Management Office
- J.D. Sloan – Deputy Director of Engineering Services
- Daniel Claspell – Deputy Director of CS, DP, and AMR
- Ed Ziemer – Deputy Director of Utilities – Operations
- Cris Cottom – Water Capital Projects Manager
- Matt Montgomery – Sewer Capital Projects Manager
- Pat Keepes – Water Superintendent
- Harry Lawson – Wastewater Superintendent
- Duane Gilles – Water Distribution Manager
- Travis Hildebrandt – Collection Systems Manager
- Steve Capin – Construction Manager

City of Evansville

- Talmadge Vick – Contract Compliance/MBE Liaison
- Matt Maxwell – Purchasing Coordinator
- Debra Spalding – Purchasing Director

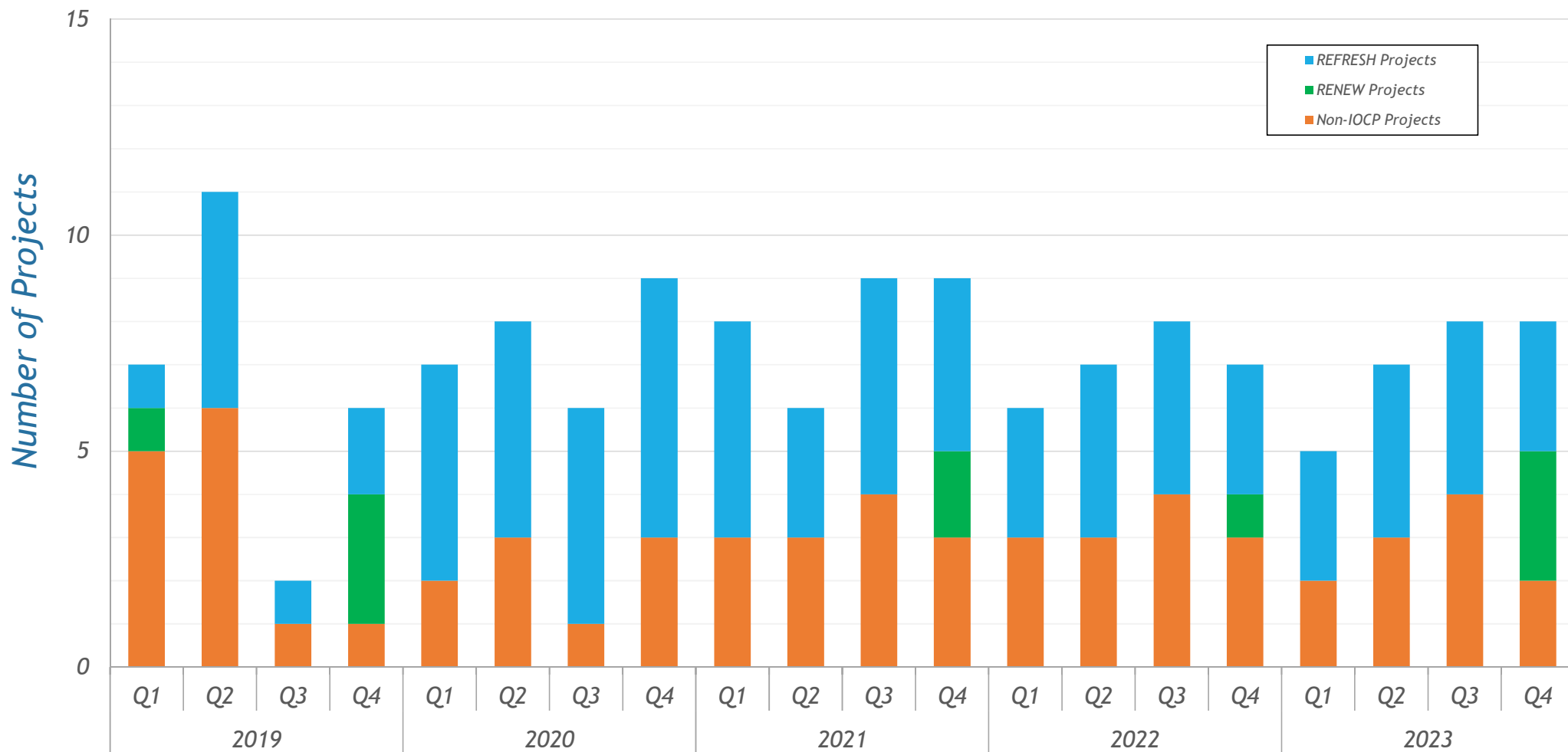


Total Spending - 5-Year Look Ahead by Quarter





Total Projects Bidding - 5-Year Look Ahead by Quarter



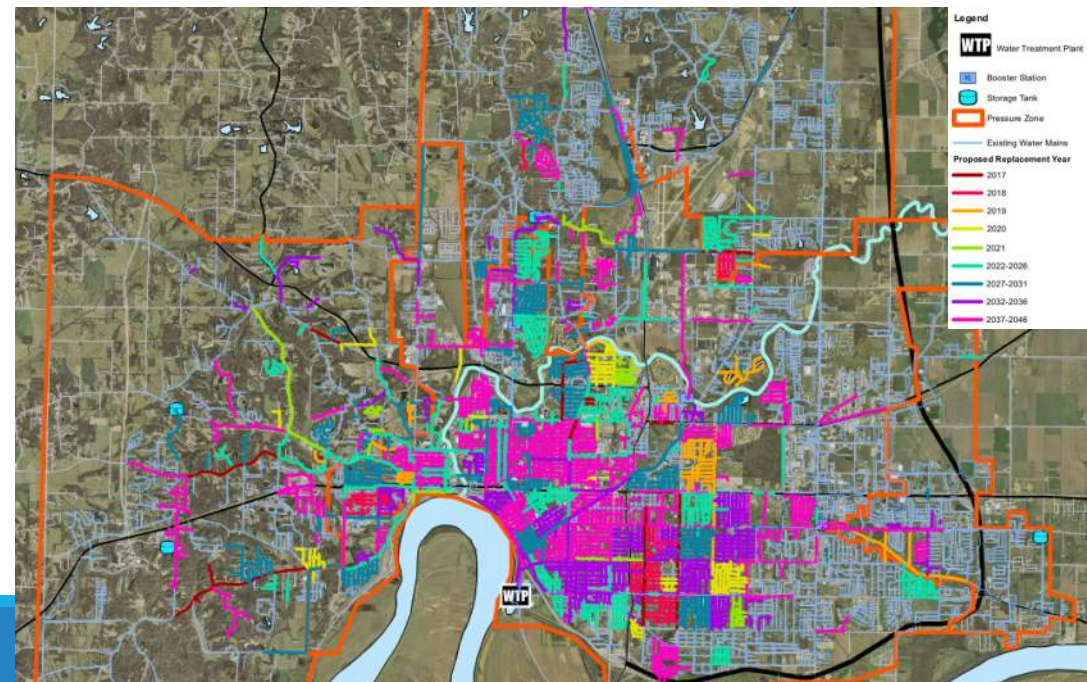


Overview

What is it? A decades-long program to replace our aging water mains and supporting infrastructure started in 2017

REFRESH Evansville will include:

- Replacement of aging water mains
- Water main extensions
- Improvements to booster stations
- Construction of new infrastructure



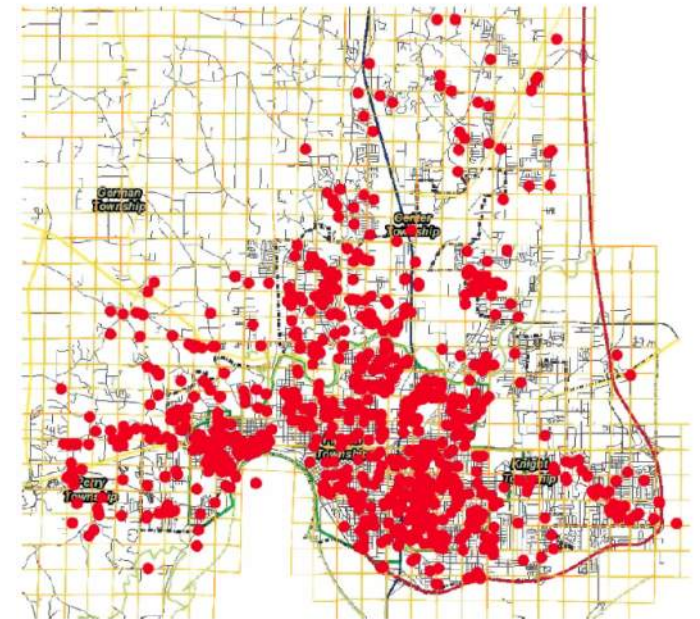
AWWA Benchmarking Survey for Fiscal Year 2016:

The number of breaks per 100 miles of pipe ranged from **3 to 24** and the mean was **9**.

Explanation of Need:

Year	# of Breaks	Rate (breaks/100 mi)
2014	481	47.9
2015	384	38.2
2016	257	25.6
2017	232	23.1
2018	296	29.5

Water Main Breaks Occurring From 2012 to 2014



refresh EVANSVILLE Background (continued)

Historical rate of water main replacement $\leq 0.5\%$

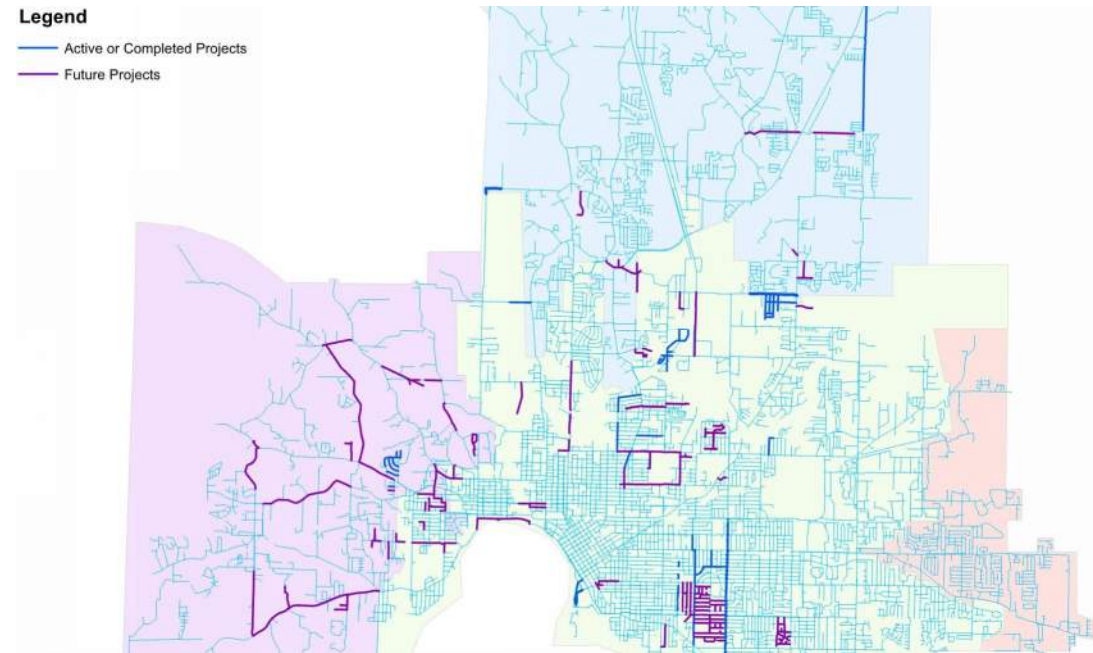
- To replace 1,000 miles >>> 200+ years

REFRESH targets rate of replacement = 1.5%

- To replace 1,000 miles >>> 67 years

Legend

- Active or Completed Projects
- Future Projects





Progress to Date

By the Numbers:

- 8 Projects completed totaling nearly 25,000 LF
- 10 Projects currently under construction totaling nearly 67,000 LF
- 40 Projects currently scheduled for REFRESH totaling nearly 216,000 LF
 - 9 Projects Bidding in 2019 totaling over 72,000 LF
 - 19 Projects Bidding in 2020 totaling over 72,000 LF
 - 16 Projects Bidding in 2021 totaling over 70,000 LF



2017-2018 Construction

Project Name	Length (ft)	Size (in)	Status
Stringtown Road	1,450	16	Complete
Hi-Rail Pedestrian Trail	2,640	16	Complete
Western Terrace Phase II	6,270	8	Complete
Lant Circle / Bayard Park	4,380	8	Complete
Keck Avenue	2,330	12	Complete
Heidelbach & Olmstead	6,130	12	Complete
St. James Ave & Keck Ave	1,670	8	Complete
Walcott	500	8	Complete
St. George Road and Melody Hill	14,440	8	Punchlist

CONTINUED ON NEXT SLIDE



2017-2018 Construction

Project Name	Length (ft)	Size (in)	Status
Weinbach Aveue	11,160	12	Closeout
Chestnut Street	760	12	Closeout
Mt. Auburn Road	2,450	8	Closeout
West Mill and Mohr Roads	3,480	12	Construction
Green River Road Phases VI & VII	10,180	12	Construction
Vanderburgh Neighborhood Phase I	6,300	8	Construction
Vanderburgh Neighborhood Phase II	2,780	8	Construction
Lodge Avenue	9,430	12	Construction
Waterworks Road	5,500	36	Construction
TOTAL	91,850		



Design Update



Project Name	Length (ft)	Size (in)	Status	Bid Opening
Washington and Second	2,300	8 / 12 / 16	Design	March 2019
Eichel, US 41 to Fares	1,170	8	Design	April 2019
President's Neighborhood	20,400	8	Design	April 2019
Baseline Road, Fenway to Korff	1,500	12	Design	April 2019
Kansas Road, Peterburg to Baldwin	7,890	12	Design	May 2019
First Avenue, Pigeon Creek to Booster	7,660	36	Design	June 2019
Broadway, Red Bank to Schutte, & Frey Road	14,100	12	Design	July 2019
Walnut Street	TBD	TBD	Planning	Mid 2019
Inglefield Road, US 41 to Princeton	1,320	12	Planning	Oct. 2019
Sweetser Rotherwood Area	15,800	8	Design	Nov. 2019
Dexter Avenue and Jackson Avenue	1,100	8	Planning	Jan. 2020
Wall Street	440	8	Planning	Jan. 2020

CONTINUED ON NEXT SLIDE



Design Update



Project Name	Length (ft)	Size (in)	Status	Bid Opening
Fendrich Neighborhood	5,990	8	Planning	Feb. 2020
Rosewood Drive and Karch Drive	2,260	8	Planning	March 2020
Bellaire Road, Oak Hill to Weinbach	820	8	Planning	March 2020
Virginia Avenue, Kelsey to Boeke	1,600	8	Planning	April 2020
Lake Drive, east of Oak Hill	3,700	8	Planning	May 2020
Hogue Rd, New Harmony Rd, Harmony Way	22,900	8 / 12	Planning	June 2020
Kerth Ave, St. George to Christ	1,380	8	Planning	June 2020
Christ Rd, Kerth to Fares	340	8	Planning	June 2020
Columbia Phase I & Fares	9,400	12	Planning	July 2020
Campground Booster Station Improvements	--	--	Planning	Aug. 2020
Bartels Lane, Evergreen Road south	2,400	8	Planning	Aug. 2020
Washington Avenue, west of Martins Lane	1,100	8	Planning	Sept. 2020

CONTINUED ON NEXT SLIDE



Design Update

Project Name	Length (ft)	Size (in)	Status	Bid Opening
Helfrich Avenue	1,100	8	Planning	Sept. 2020
Claremont, Bosse, and Craig Avenues	8,620	8	Planning	Oct. 2020
Campground Booster VFD	--	--	Planning	Oct. 2020
Tupman Road, north of Upper Mt Vernon	2,000	8	Planning	Nov. 2020
Ingle Ave, Forest to Marion	1,100	8	Planning	Nov. 2020
Cardinal Drive	1,200	8	Planning	Nov. 2020
Schmidt Ln, Whetstone Ln, Bexley Ct	4,600	8	Planning	Dec. 2020
Covert Avenue - Phase II and Wedge Avenue	3,900	8	Planning	Q1 2021
Ohio Street, Pigeon Creek to St Joseph	5,560	12	Planning	Q1 2021
Charlotte and Russell Avenues	2,400	8	Planning	Q1 2021
Speaker Rd, James Ave, & Nolan Ave	2,900	8	Planning	Q1 2021
Stanley Ave, Governor to Kerth	3,400	8	Planning	Q1 2021

CONTINUED ON NEXT SLIDE



Design Update

Project Name	Length (ft)	Size (in)	Status	Bid Opening
Schutte Road, Broadway to USI Tank	5,300	12	Planning	Q2 2021
Lincoln Booster Station Replacement	--	--	Planning	Q2 2021
US 41, St. George to Lynch Road	5,340	16	Planning	Q2 2021
Kathleen Avenue	320	8	Planning	Q3 2021
Schroeder Road	5,200	16	Planning	Q3 2021
Morgan Avenue - Phase III	5,200	12	Planning	Q3 2021
Senate Avenue, Petersburg Road, Feltman Drive, and Campground Road	6,960	12	Planning	Q3 2021
Maryland Avenue, Harmony to Wessel	2,300	8	Planning	Q3 2021
Stallings Booster Station Replacement	--	--	Planning	Q4 2021
Mesker Park - Phase I	2,520	8	Planning	Q4 2021
Booster Pump Replacement	--	--	Planning	Q4 2021
Upper Mt Vernon - Phase 1, Red Bank Road and New Harmony Road	16,950	12 / 16	Planning	Q4 2021
70,820 LF CURRENTLY IN DESIGN; 171,990 LF CURRENTLY PLANNED				



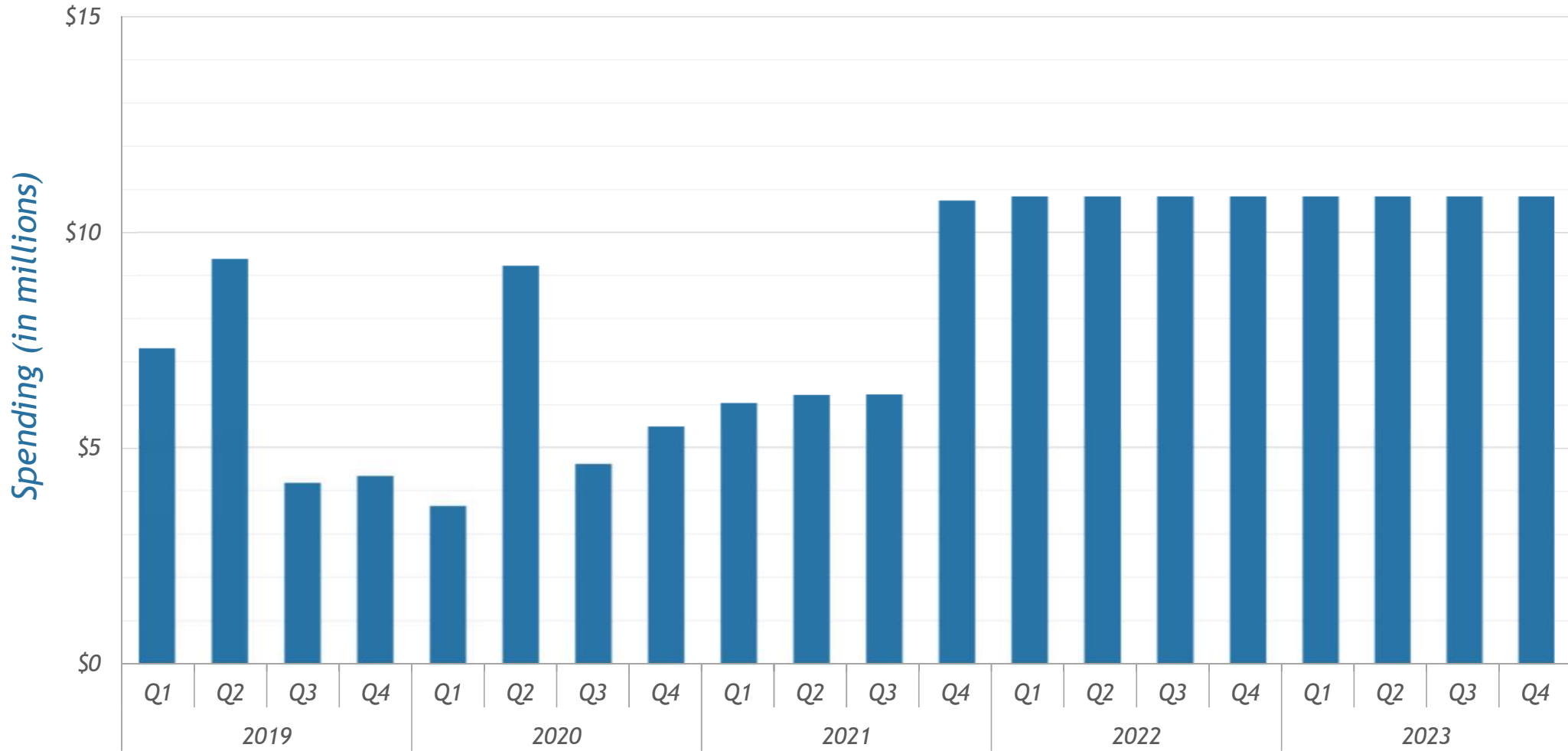
Looking to 2022 and Beyond

By the Numbers:

- Over 40 projects proposed for REFRESH totaling over 290,000 LF
- Proposed REFRESH program costs of \$130,000,000+ for 2022+

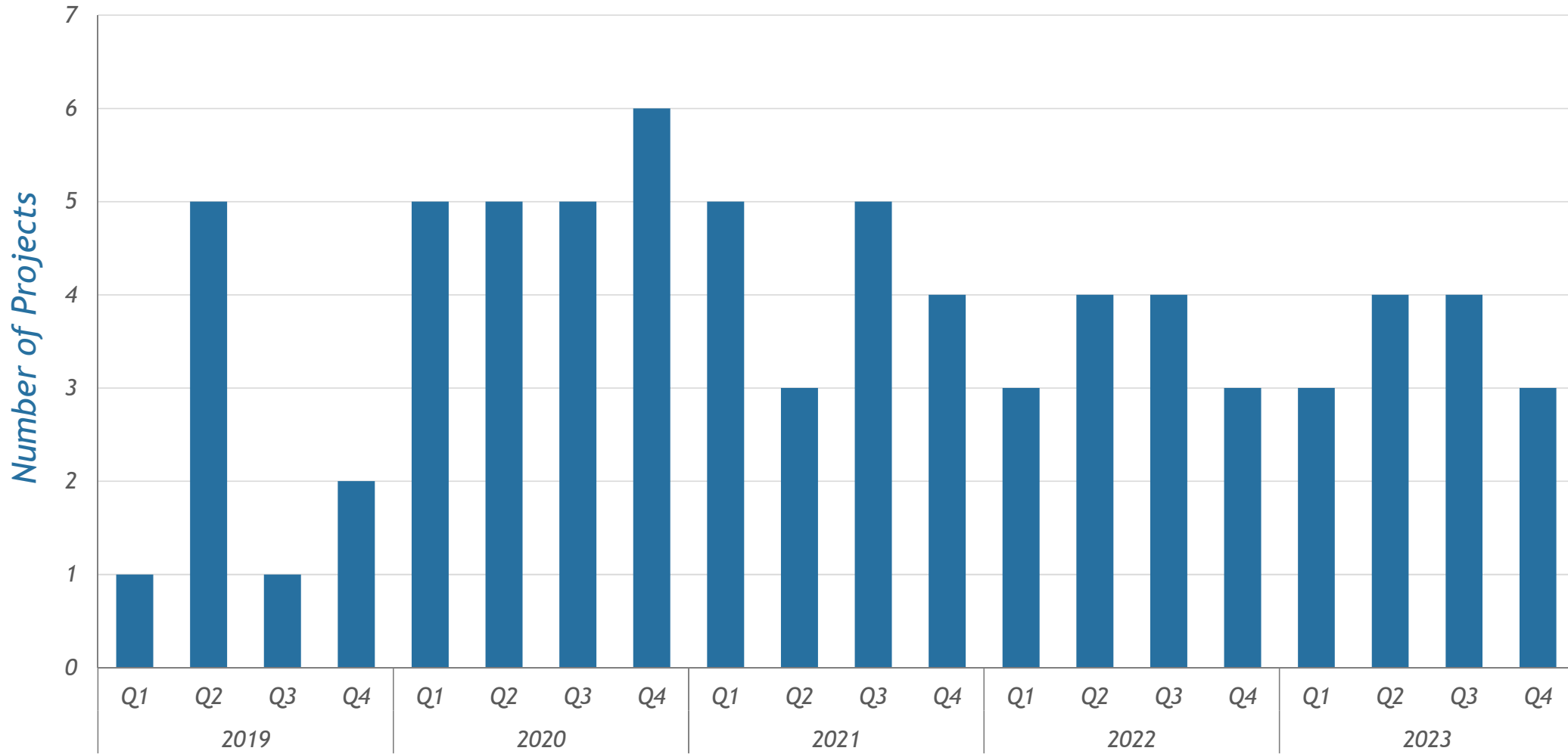


Water Spending - 5-Year Look Ahead by Quarter





Projects Bidding - 5-Year Look Ahead by Quarter



Water Plant Projects

What is it? On-going maintenance and improvement projects at the existing water treatment plant

***Water Plant Projects* will include:**

- Maintenance of existing water treatment equipment
 - Significant electrical improvements
 - Rehabilitation of existing buried piping and concrete structures
 - Construction of new infrastructure

Water Plant Projects

By the Numbers:

- 11 projects proposed for Water Plant Projects
- Proposed Water Plant costs of over \$6M



Background

- Evansville is a combined sewer system community
 - Approximately 2 billion gallons of combined sanitary and storm water can escape the system in a year through 22 combined sewer outfalls into the Ohio River and Pigeon Creek
- 2010 – Evansville and the EPA and IDEM enter into an agreement to address the issue
- 2011 – Evansville initiates development of Integrated Overflow Control Plan (IOCP)
- 2013 – Evansville submits IOCP to the EPA and IDEM
- 2014 – The initial IOCP is rejected and the parties enter into negotiations
- 2016 – All parties come to a final agreement for design, construction, and monitoring improvements to the sewer system to reduce the frequency and volume of combined sewer overflows in Evansville
- 2016-2040 – Implementation of the IOCP program of projects, collectively called Renew Evansville
- 2018-Present – Renegotiation of the IOCP



Overview

What is it? Evansville’s largest investment in clean water infrastructure that will significantly improve the sewer system with a 24-½ year, \$729 M plan

RENEW Evansville will include:

- Upgrades to Existing Wastewater Treatment Facilities
 - Construction of New In-System Storage Facilities
- Sewer Separation Projects
 - Combined Sewer Overflow Treatment Facilities
 - Inflow and Infiltration Reduction Projects
 - Sanitary Sewer Capacity Projects





Progress to Date

4 projects scheduled in 2019-2020

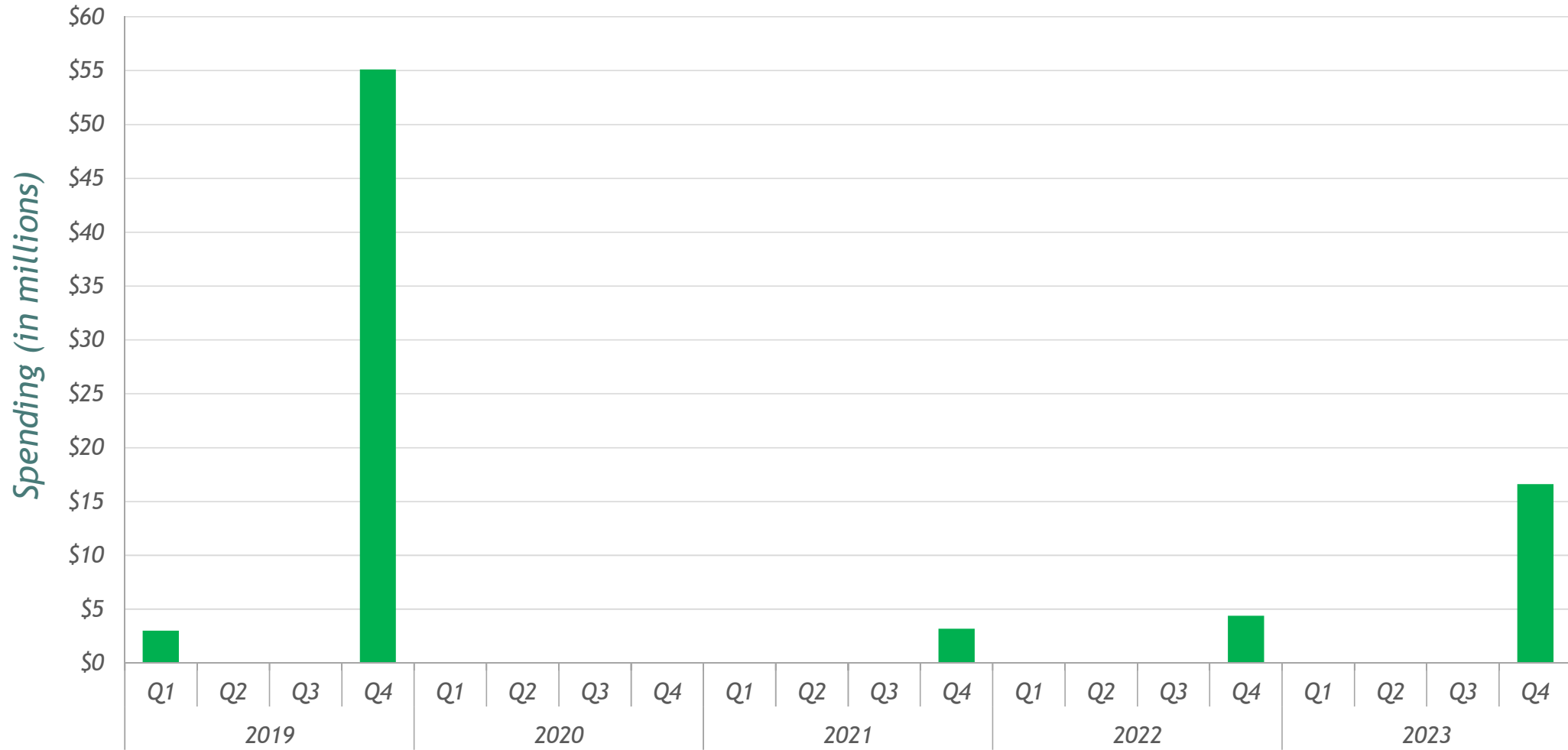
4 upcoming Bid Advertisements before 2019 year end

On-going Projects

Under Construction	In Design
Sunrise Pump Station A and C	East Plant Improvements
Waterworks Road Relocation	Akin Park Storm Sewer
Howell Storage Basin	Sunrise Pump Station B,D and E
West Plant Improvements	

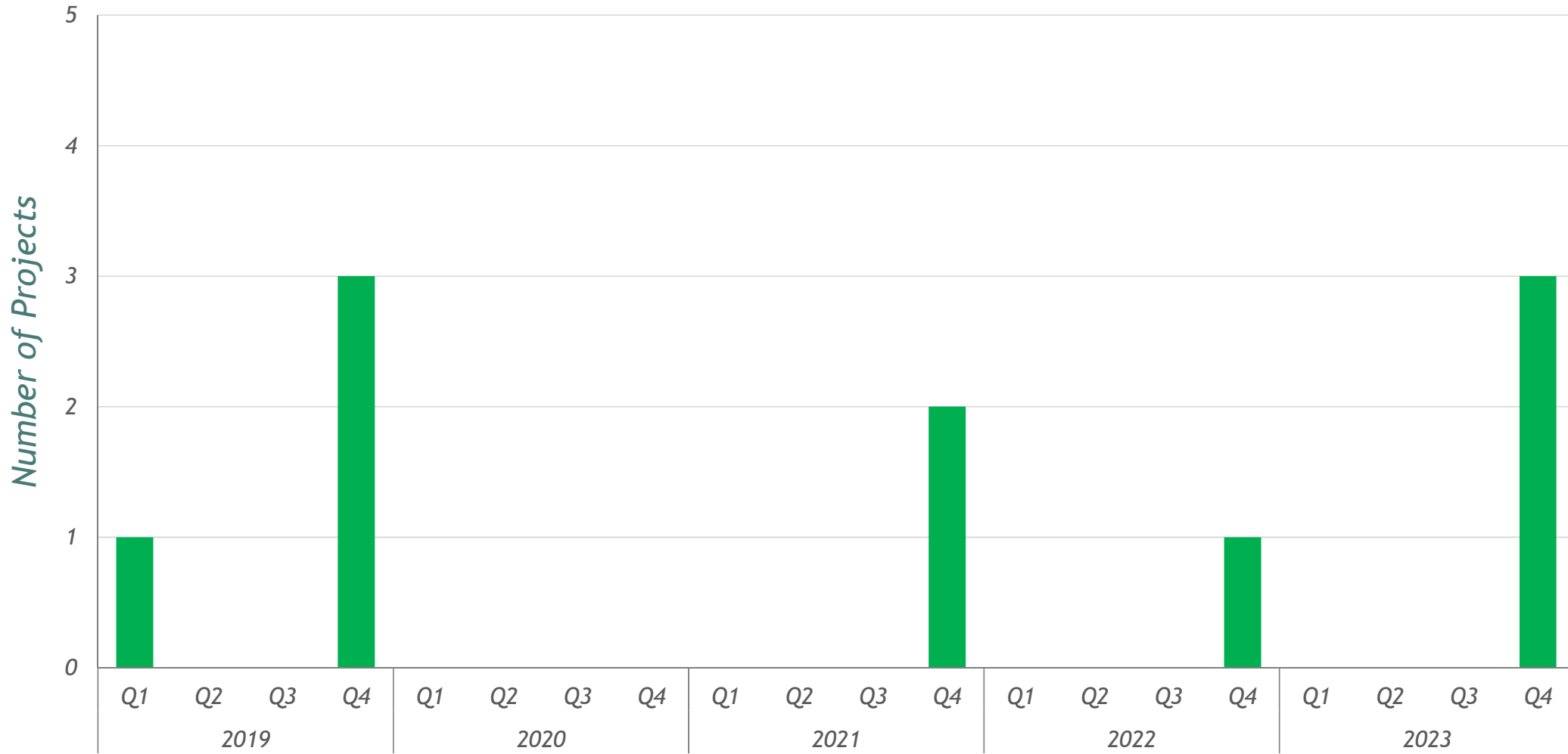


IOCP Sewer Spending - 5-Year Look Ahead by Quarter






IOCP Projects Bidding - 5-Year Look Ahead by Quarter





Upcoming Projects

	Estimated Cost	Bid Date
◦ West Collection Real Time Controls	\$ 1.1 M	Q4 2019
◦ Akin Park Storm Sewer	\$ 3.0 M	Q1 2019
◦ East WWTP Effluent Sunrise Station B,D,E	\$ 14.0 M	Q4 2019
◦ East WWTP Capacity Upgrades	\$ 40.0 M	Q4 2019
◦ Millersburg/Hwy 41 Rehab	\$ 0.6 M	Q4 2021
◦ Lloyd Basin Rehab	\$ 2.6 M	Q4 2021
◦ E11 Basin Rehab	\$ 4.4 M	Q4 2022
◦ Diamond Weinbach & Keck	\$ 1.7 M	Q4 2023
◦ NW Trunk West Terrace PS	\$ 5.1 M	Q4 2023
◦ State Hospital Lake PS	\$ 9.8 M	Q4 2023





Non-IOCP Projects

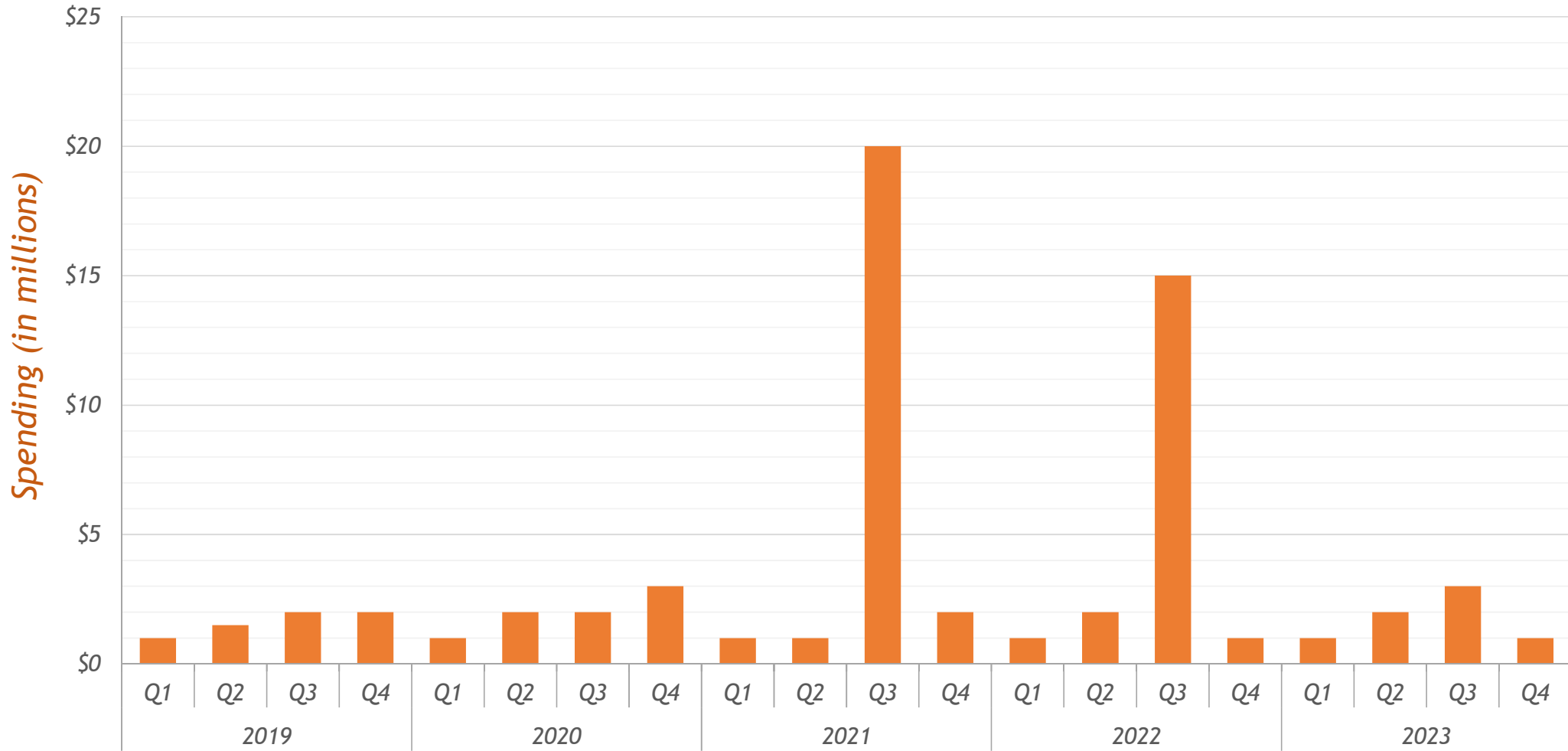
What is it? Collection System and Wastewater Treatment Projects not included in *Renew Evansville*

Non-IOCP Projects will include:

- 15 Lift Stations
 - 5 Gravity Extensions / Upgrades
 - Annual Sewer Lining and Sewer Repair
 - Miscellaneous Plant Work
 - Miscellaneous Collection System Projects, Vortex, and STEP
 - New Testing Lab

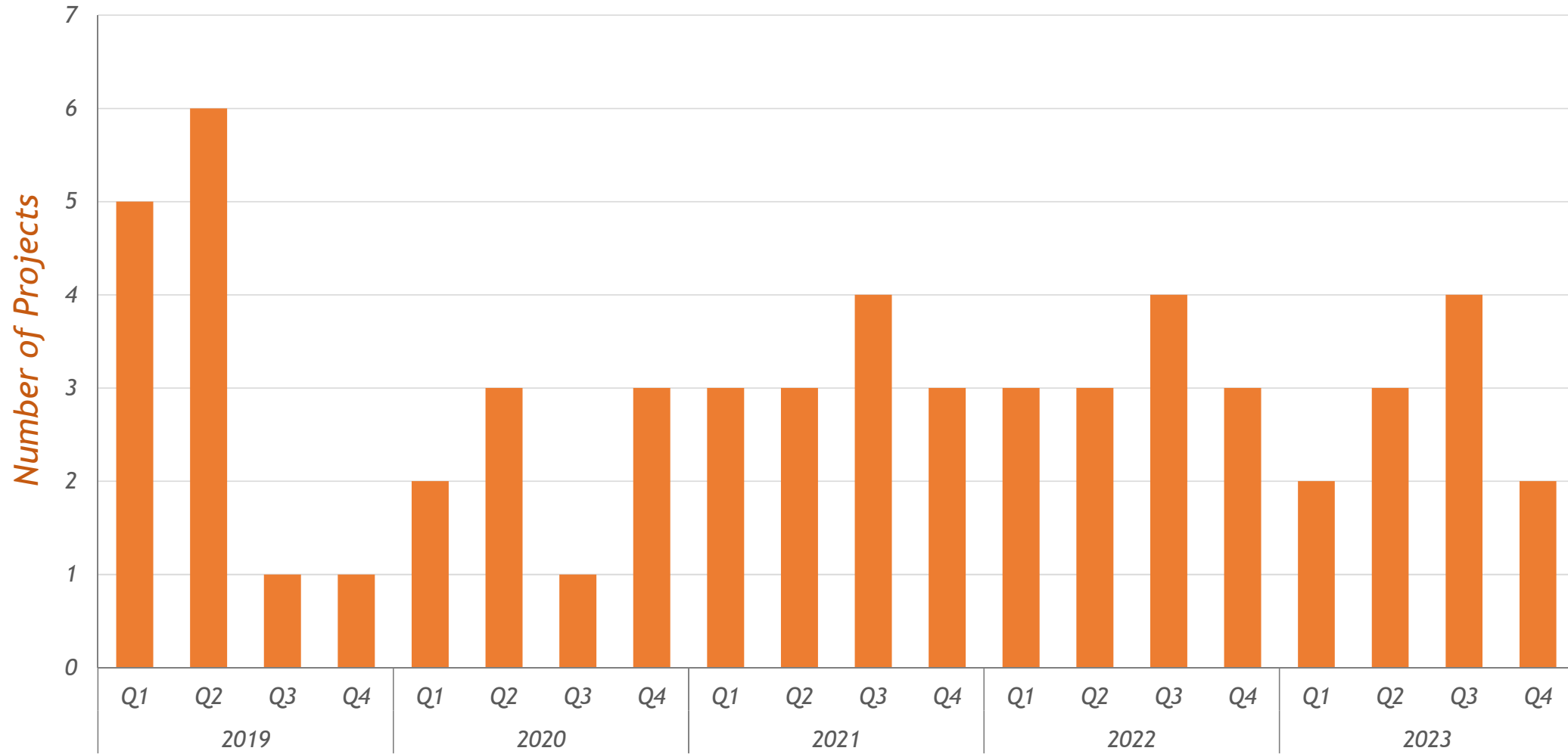


Non-IOCP Projects Spending - 5-Year Look Ahead by Quarter





Non-IOCP Projects Bidding - 5-Year Look Ahead by Quarter



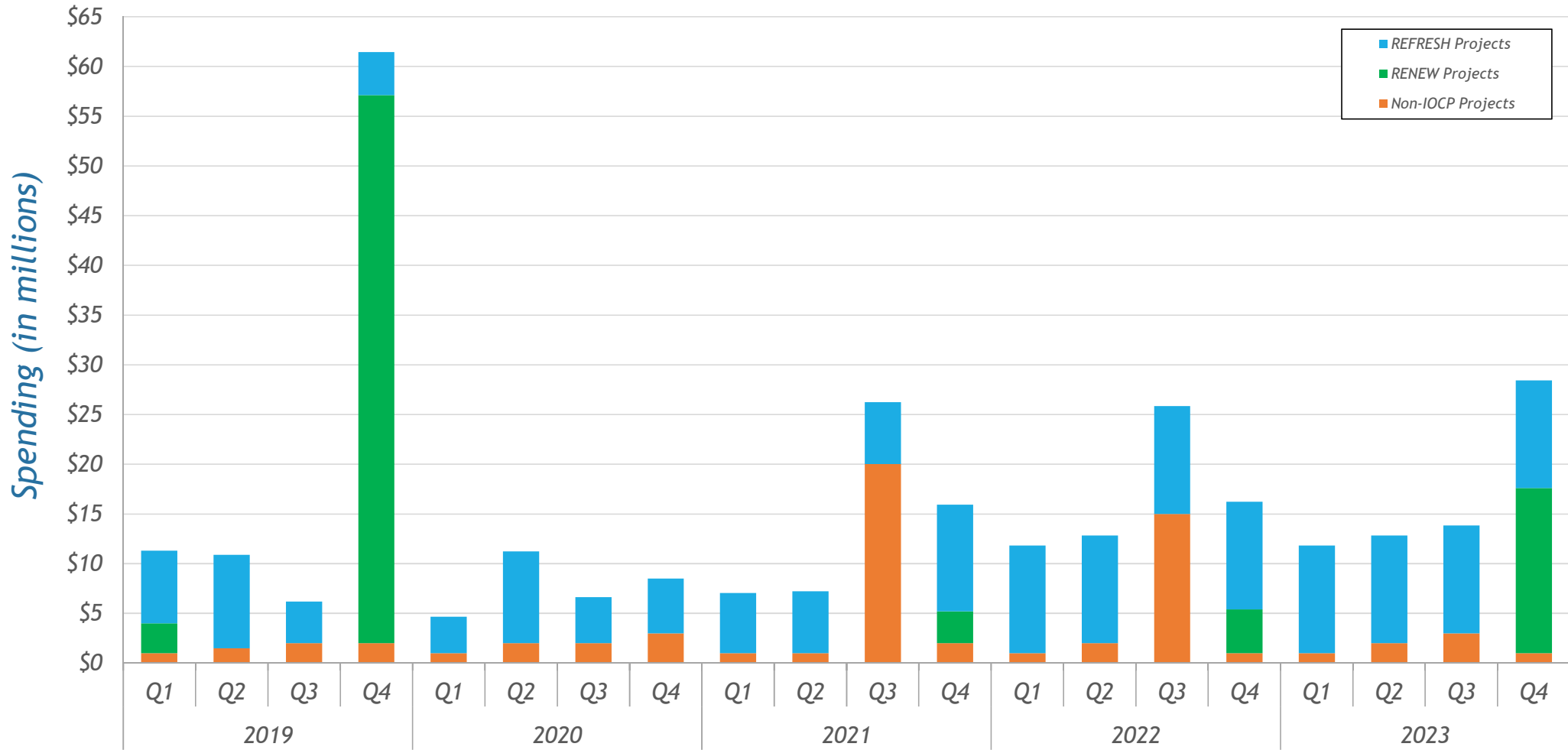


Non-IOCP Upcoming Projects

	Estimated Cost	Bid Date
◦ Valley Downs Interceptor	\$ 3 M	Q2 2020
◦ Wansford Lift Station	\$ 40 M	Q3 2021
◦ East Sludge Storage Building	\$ 800k	Q4 2019
◦ Bonnieview and Oak Lift Station	\$ 2 M	Q4 2019
◦ Key West Relief Sewer	\$ 2 M	Q4 2019
◦ Misc. Relief Sewers and Lift Stations	\$ 1.5 M	Q1-Q4 2019

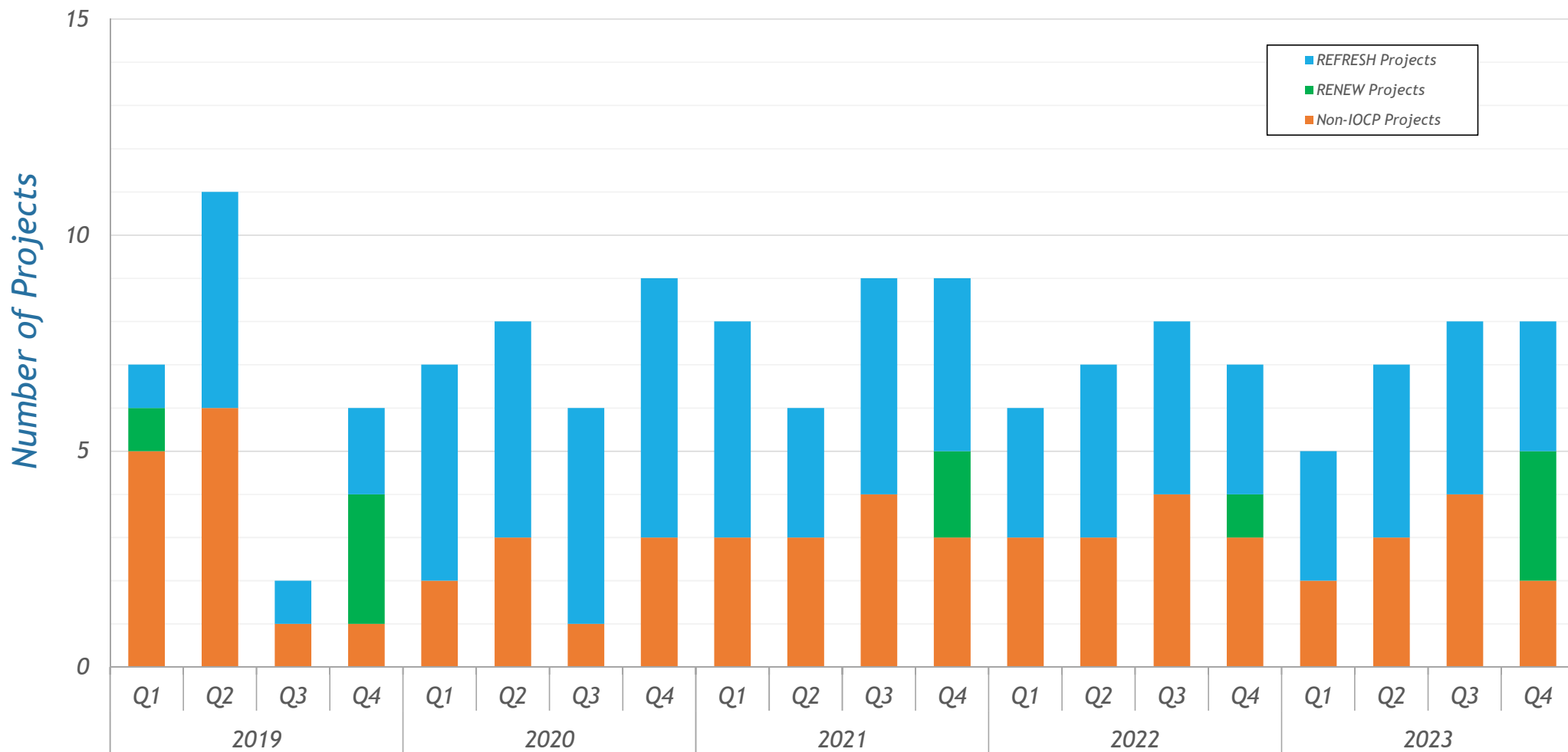


Total Spending - 5-Year Look Ahead by Quarter





Total Projects Bidding - 5-Year Look Ahead by Quarter



Minority / Women Business Enterprise Program Overview

- Participation Goals: **12% MBE** and **7% WBE** participation
- Bid requirements: Contact sub-contractors **10 days or ASAP**, Meet with Compliance Officer **3 days** prior to Bid Opening if unable to meet goals
- Review Program Requirements and Forms A through E provided with Bid Documents
- How to develop bid packages that provide meaningful MBE / WBE participation
- City of Evansville will engage MBE/WBE participation of all phases of every project that is bid (Design, Professional Services, Construction)
- What is Good Faith Effort – It's all about "Results"
- Prime Contractor's Unbundling scopes to insure or build MBE / WBE participation
- Questions / Discussion Regarding MBE / WBE Program
- Talmadge Vick – 812 492 4400

Purchasing and Local Requirements

Responsible Bidding Ordinance

- EMC 3.95.040 Responsible bidding practices and submission requirements



City of Evansville, Indiana
RESPONSIBLE BIDDING ORDINANCE FORM
Municipal Code 3.95.040

City-County Purchasing

Contacts

- Matt Maxwell – 812 436 4917; mmaxwell@evansville.in.gov
- Debra Spalding – 812 436 4961; dspalding@evansville.in.gov

General Overview

- Public Works projects > \$150,000
- Certification from Purchasing Department
- Certification term is calendar year
- Certification is required for prime/general contractors at the time of bid opening

General Overview


- Not a publicly available list of certified companies
- Per EMC 3.95.030, prime/general contractors must be properly licensed by the Building Commission at Bid Opening – 812 436 7885

Subcontractors

- Certification requirement applies regardless of their cost
- Certification is required by contract signing
- Contractor's license issued by Building Commission may be required, dependent on scope of work – 812 436 7885

Caveats

- Exclusion from contractor's license does not necessarily absolve RBO certification
- Some scopes of work are exempt: professional services, supplier, trucking
- Rule of thumb: if employee doing on-site, physical/manual labor, RBO is required

-
- City and Utility will hold prime to original bid amount if subcontractor unable to acquire contractor's license and/or RBO certification
 - Some exemptions from specific questions or entire RBO, based on scope of work and/or makeup of company
- 
- A solid blue horizontal bar spanning the width of the slide at the bottom.

Additional Items to Note

EWSU Engineering office has moved!

- Now located in the ETFCU Plaza building at 1 SE 9th Street, Suite 200, Evansville, IN, 47708
- All pre-bid meetings (except for plant projects) will now be held at new location

EWSU has adopted e-Builder as their management software

- All EWSU projects will now be managed through e-Builder
- Invoicing, Planning, Design, Construction, etc. will all be through e-Builder
- EWSU will setup accounts as needed for each project

Open Question and Answer





Thank you for your time

A solid blue horizontal bar spans the width of the slide at the bottom.