

ANNUAL FALL LEAF PICKUP BEGINS OCTOBER 21

Fall leaf pickup begins **Monday, October 21**, and runs through **Friday, December 13**.

- Put leaves in biodegradable plastic or paper leaf bags or in a container
- Place leaves in manageable, organized piles separate from normal trash to be collected
- Leaf pickup occurs on the same day as normal trash service, and should only be placed at the pickup location on the normal day of trash collection

For more information, please visit:

WWW.EWSU.COM/FALL-LEAF-COLLECTION

Clear the FOG this Holiday Season

Eggnog. Mashed potatoes. Turkey. Macaroni and cheese. Rich, delicious holiday dishes may contain fat, oil and grease (FOG). When put down the drain or into the dishwasher, FOG flows into our sewer pipes, forming destructive clogs that block sewers.

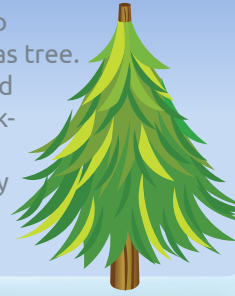
Cooking oils, meat fat and greasy pizza are common sources of FOG. Lesser known guilty foods include milk and yogurt (containing fat), cheese, peanut butter, mayonnaise and salad dressings.



Visit EWSU.com/FOG to learn more.

Plan Ahead: Christmas Tree Disposal

Post-holiday season, remember to properly dispose of your Christmas tree. Christmas tree disposal is included with trash collection services. Pick-up will occur during the **first full week of January** on the same day as your trash collection.



Welcome to Construction Corner

Water Main Replacement Projects

Presidents Neighborhood

Began: 7/2019. ≈21,000' of new water main pipe between Washington Ave., Weinbach Ave., S. Harlan Ave. and Ravenswood Drive. Est. completion: 4/2020.

First Avenue

Began 8/2019. Work area: First Ave. between W. Morgan Ave. and Colonial Ave. Est. completion: 6/2020.

Washington Avenue and SE Second Street

Began 5/2019. ≈1,950' of new water main pipe in the Haynie's Corner Arts District. Est. completion: 11/2019.

Broadway Avenue

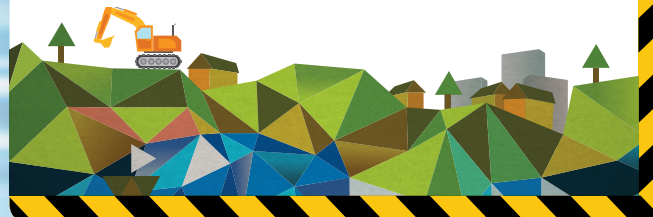
Began 9/2019. 11,000+ feet of new water main pipe along Broadway Ave. from Schutte Road to Red Bank Road, and along Frey Road from Broadway Ave. to the end of the public roadway.

Learn more about these projects:

www.refreshEvansville.com

Twitter: [@RefreshEville](https://twitter.com/RefreshEville)

CONSTRUCTION CORNER



GET THE DROP!



A quarterly newsletter for giving your life a splash of insight.

Fall 2019

BE PREPARED: WINTERIZE OUTDOOR PLUMBING

With cooler weather upon us, it's time to winterize outdoor plumbing to **avoid frozen pipes and costly damage**. Follow these easy steps to winterize your outdoor plumbing.

Hoses on Exterior Faucets

Disconnect any hoses and drain them for winter storage. Remove splitters or any other items from outdoor faucets.

Shut-off Valves

Locate shut-off valves for outdoor faucets and shut the water off in a clockwise direction.

Drain Exterior Faucets

Turn on all faucets to drain any water left in them. If water continues to flow, check the shut-off valve to make sure it's off. Leave the faucet handle turned on throughout the winter.

Add Protection

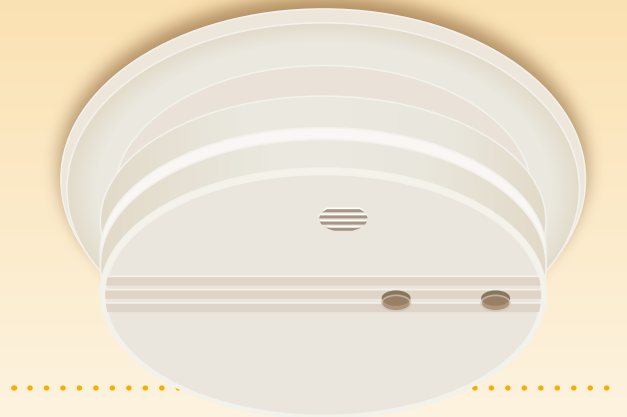
Further protect your home's plumbing by insulating exterior pipes with insulation sleeves. Also winterize outdoor faucets with an insulated faucet cover to give added protection.

For source: ewsu.com/Get-the-drop



SMOKE ALARM SAFETY TIPS

Smoke alarms save lives! The National Fire Protection Associates (NFPA) states that almost three of every five home fire deaths resulted from fires in homes with no smoke alarms (40%) or no working smoke alarms (17%). When properly installed and maintained, smoke alarms play a vital role in reducing fire deaths and injuries.



FOLLOW THE TIPS BELOW TO ENSURE YOUR SMOKE ALARMS ARE WORKING PROPERLY.

Choosing a Smoke Alarm

Choose a smoke alarm listed with Underwriters Laboratories (UL). If a member of your household has difficulty hearing, consider a smoke alarm with features such as flashing lights or vibrations in addition to a loud noise to signal an emergency.

Maintaining Smoke Alarms

Smoke alarms only help with fire safety when properly maintained. Follow these tips to ensure your smoke alarms are working properly.

- Test all units monthly.
- As soon as the low-battery warning alarm sounds, install new batteries. Even if the low-battery warning alarm does not sound, replace batteries once per year.
- Regularly clean smoke alarms by vacuuming them with a brush attachments.
- Replace smoke alarms every 10 years.

Installing Smoke Alarms

According to the NFPA, half of home fire deaths occur between 11 p.m. and 7 a.m., when most people are sleeping and more likely to be overcome by smoke before they can escape. Because of this, where you install your smoke alarms is incredibly important.

- Smoke alarms should be placed outside of each sleeping area or inside of any bedroom where the door is typically shut. They should also be installed on every story of the house, including the basement.
- Wall-mounted smoke alarms should be mounted 4 to 12 inches from the ceiling. Ceiling-mounted smoke alarms must be at least 4 inches from the nearest wall.

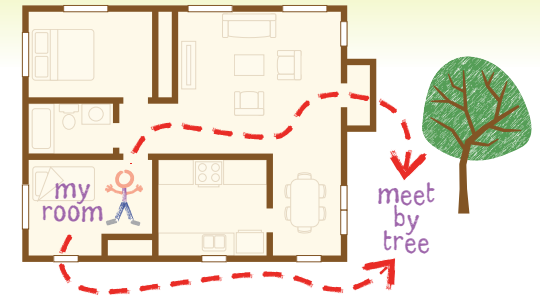
Learn more about smoke alarms by visiting nfpa.org/education

*For sources for articles on this spread:
ewsu.com/Get-the-drop*

Fire Safety Tips for Kids

Use these tips to help children understand the importance of fire safety.

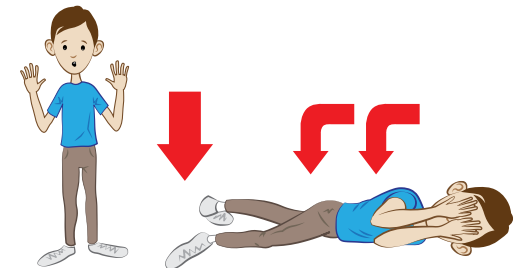
1. Know **two ways** from every room to a family meeting place outside.



2. Go **low** in smoke.



3. **Stop, drop and roll** if your clothes catch on fire.



4. **Don't touch** matches, candles, lighters or the stove.



5. **Smoke alarms save lives!** Never take the batteries out for your toys.