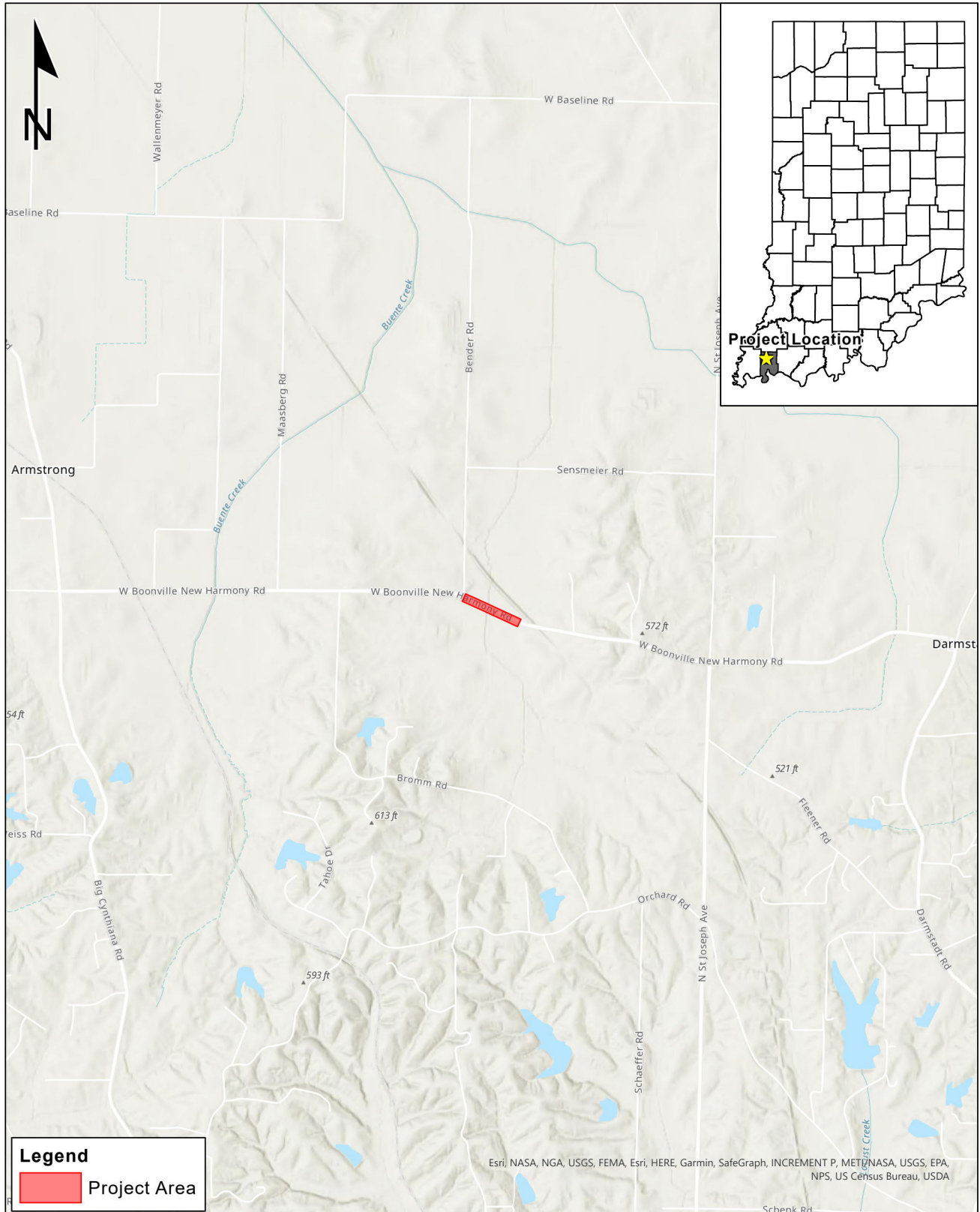


Figure 1 - Project Location Map;  
Des. No. 1902794, Bridge Replacement, Booneville New Harmony  
Road over Tributary of Big Creek in Vanderburgh County, Indiana

Date: 10/15/2020



Sources:  
Basemap - Esri  
Map Projection: UTM Zone 16 N  
Map Datum: NAD83  
Created by: Jeffrey A. Plunkett

2,000 0 2,000  
Feet

**FIGURE 1 - PROJECT LOCATION MAP;  
DES. NO. 1902794, BRIDGE  
REPLACEMENT, VANDERBURGH  
COUNTY, INDIANA**



Figure 2 - Topographic Map;  
Des. No. 1902794, Bridge Replacement, Booneville New Harmony  
Road over Tributary of Big Creek in Vanderburgh County, Indiana

Date: 10/15/2020



Sources:  
USGS Topographic  
Quadrangle Data  
- Obtained from the State of Indiana Geographic Information Office Library  
([https://imagery.gis.in.gov/arcgis/services/Imagery/Quad\\_24K/ImageServer](https://imagery.gis.in.gov/arcgis/services/Imagery/Quad_24K/ImageServer))  
Map Projection: UTM Zone 16 N Map Datum: NAD83  
Created by: Jeffrey A. Plunkett

EVANSVILLE NORTH, INDIANA  
QUADRANGLE; 7.5 MINUTE SERIES  
(TOPOGRAPHIC)  
SECTION 11, TOWNSHIP 5S, RANGE  
11W



Figure 3 - Aerial Map;  
Des. No. 1902794, Bridge Replacement, Booneville New Harmony  
Road over Tributary of Big Creek in Vanderburgh County, Indiana

Date: 10/15/2020



Sources:  
**Orthophotography**  
- Obtained from the State of  
Indiana Geographic Information Office Library  
(<https://imagery.gis.in.gov/arcgis/services/Imagery/BestAvailable/ImageServer>)  
Map Projection: UTM Zone 16 N Map Datum: NAD83  
Created by: Jeffrey A. Plunkett

200 0 200 Feet

FIGURE 3 - AERIAL MAP;  
DES. NO. 1902794, BRIDGE  
REPLACEMENT, VANDERBURGH  
COUNTY, INDIANA

This map is intended to serve as an aid in graphic representation only.  
This information is not warranted for accuracy or other purposes.