



## MS4/Storm Water Program

### Instructions:

If an illicit discharge is observed to a storm sewer or waterway, contact the County Engineer to report the issue.

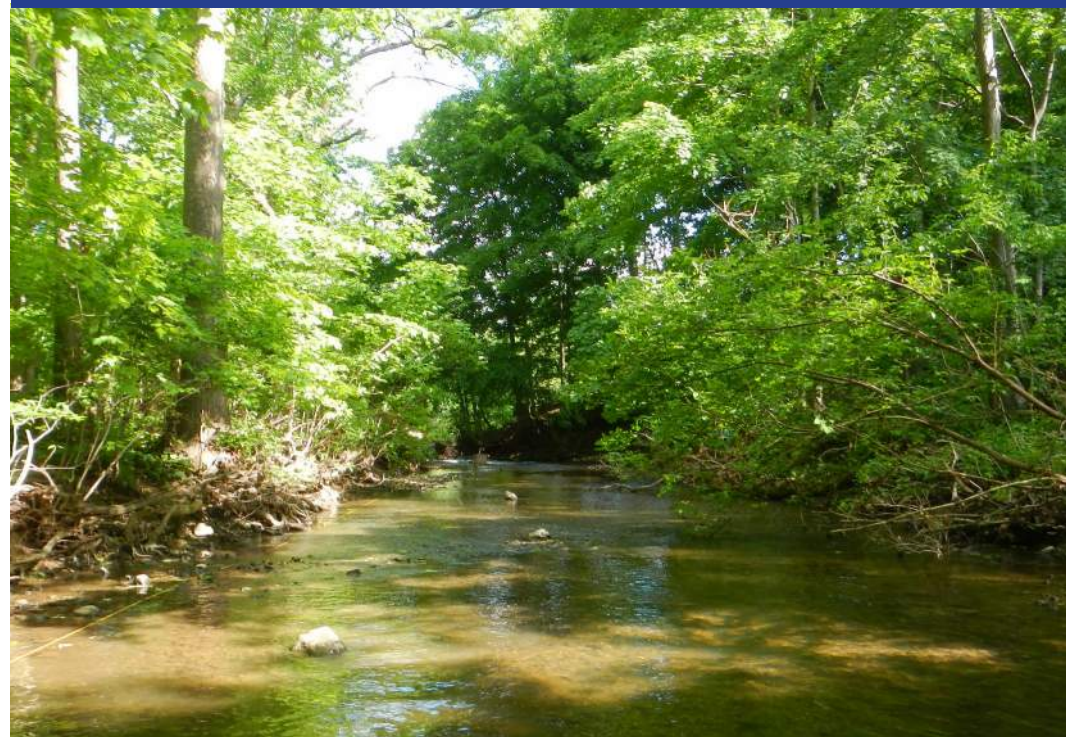
## REPORT POLLUTION IMMEDIATELY!

County Engineer (812) 435-5773



## Spotting Illicit Discharges

Pollution detection of sediment, nutrients, oil and bacteria that can drain to lakes and streams through storm drains.



### REPORT THESE ITEMS:

- Spills and contamination to lakes, rivers and streams
- Suspicious dumping to waterways
- Unusual discharges from pipes
- Sewage on the ground or draining to water bodies
- Large number of dead fish in waterways
- Failing or leaky septic systems
- Polluted runoff from storage piles or dumpsters into waterways
- Sewage, detergent, chemical, petroleum or rotten egg odors
- Soil erosion from construction sites



## Sanitary/Septic Sewer Discharges

### Observations:

- Sanitary debris/paper
- Staining on pipe
- Soap suds
- Gray or colored water
- Strange odors



## Industrial Discharges

### Observations:

- Loose debris
- White foam
- Odor
- Color



## Illegal Dumping & Spills

### Observations:

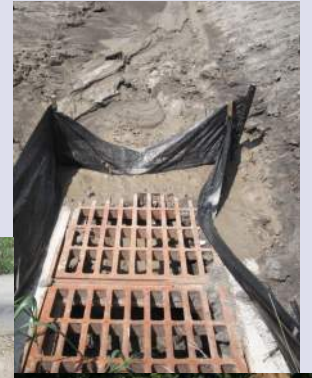
- Oil sheen
- Stained rocks or vegetation
- Odor: petroleum or chemical
- Odor or color
- Many dead fish
- Trash in ditch or stream



## Construction Site Runoff

### Observations:

- Soil leaving site
- Sediment flow to storm drain inlet



## Nutrients /Fertilizer

### Observations:

- Excessive algae growth



**CALL IMMEDIATELY**  
**County Engineer 812-435-5773**