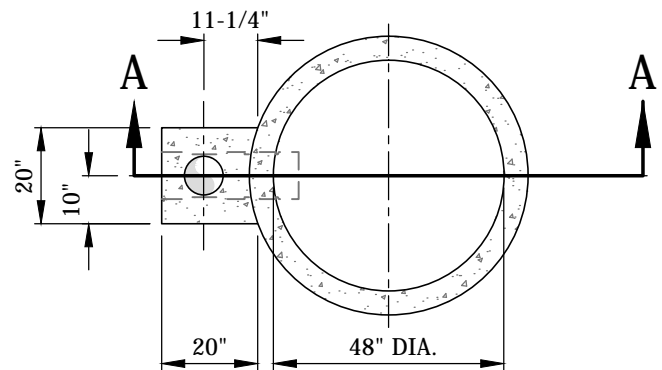
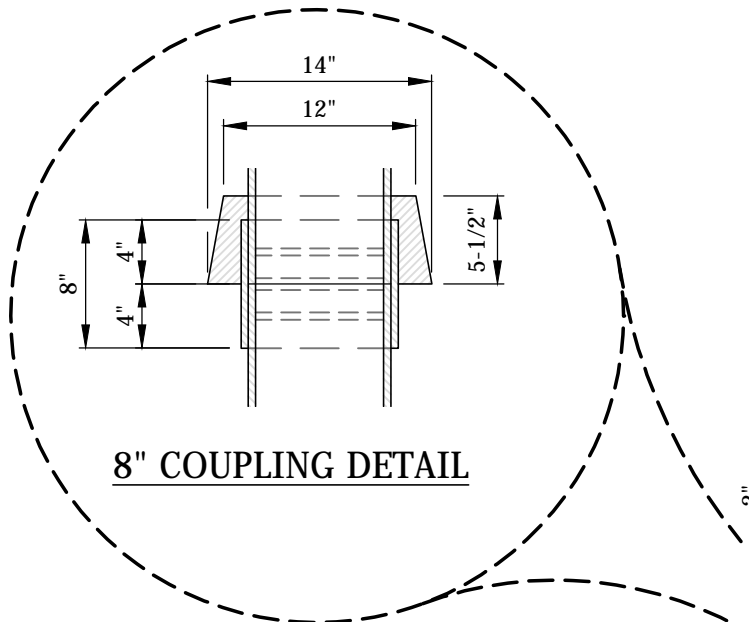


PIPE END ELEVATION



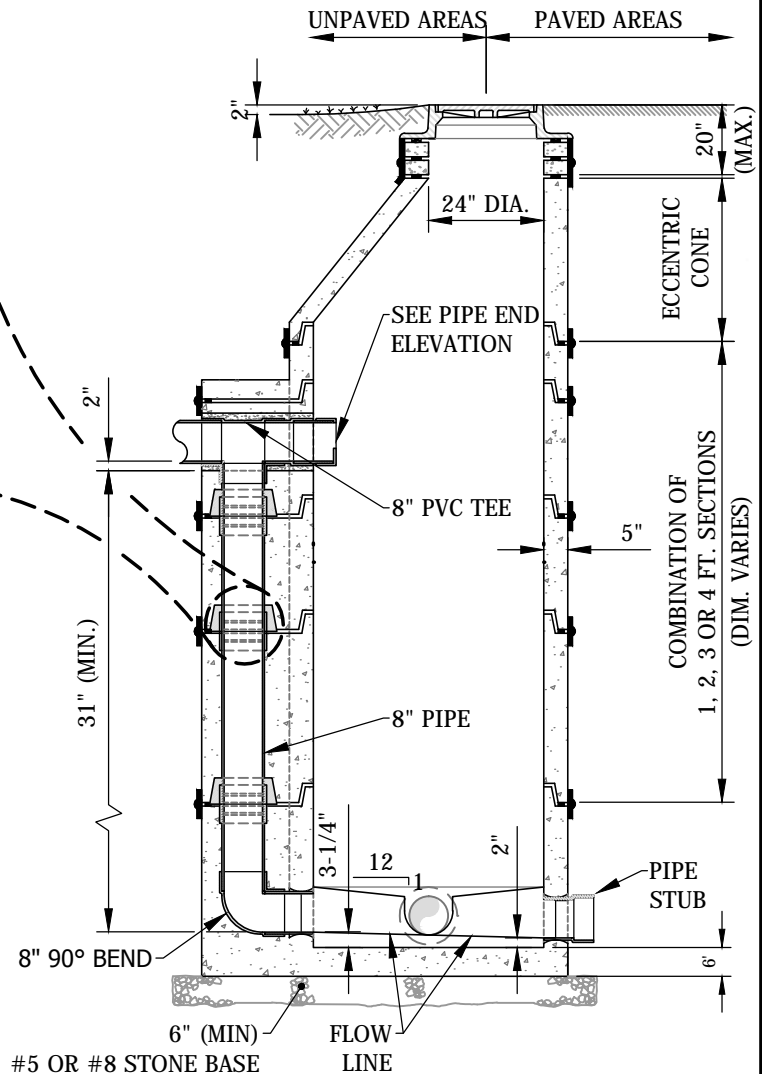
MANHOLE BASE/RISER PLAN



8" COUPLING DETAIL

NOTES:

1. ALL MATERIAL, DESIGN, MANUFACTURE, PHYSICAL TEST REQUIREMENTS, FINISH MARKING, INSPECTION, REJECTION AND REPAIRS TO MEET / OR EXCEED "SPECIFICATIONS FOR PRECAST-REINFORCED CONCRETE MANHOLE SECTIONS". PER ASTM C-478 (LATEST REVISION).
2. RESILIENT CONNECTORS MEET "SPECIFICATIONS FOR RESILIENT CONNECTORS BETWEEN REINFORCED CONCRETE MANHOLE STRUCTURES, PIPES AND LATERALS". PER ASTM C-923 (LATEST REVISION). RESILIENT CONNECTORS SHALL MEET AND/OR EXCEED ASTM C-478 GASKET REQUIREMENTS. 1" MASTIC BUTYL WILL BE ADDED BETWEEN THE JOINTS OF THE PRECAST DROP AND SHALL BE TIED INTO THE BARREL SECTION SEALANT. ALL ANGLES AND FALL SHALL BE ACCORDING TO PLANS.
3. 33" DROP MINIMUM REQUIRED. DROP IS 8" PIPE ONLY. IF DROP REQUIRES GREATER THAN 8" PIPE, A SPECIAL DETAIL WILL BE REQUIRED FOR APPROVAL.



SECTION "A-A"

File: J:\ENGINEER\AUTOCAD Standards Detail Drawings Sewer\WW-04 External Drop Manhole.dwg



**PRECAST EXTERNAL DROP MANHOLE
(REQUIRED ON ALL DROPS GREATER THAN 24")**

Approved: 11/10/15

Approved By: Michael D. Labitzke, P.E.

Adopted: 11/10/15

Scale: N.T.S.

Figure

WW-04