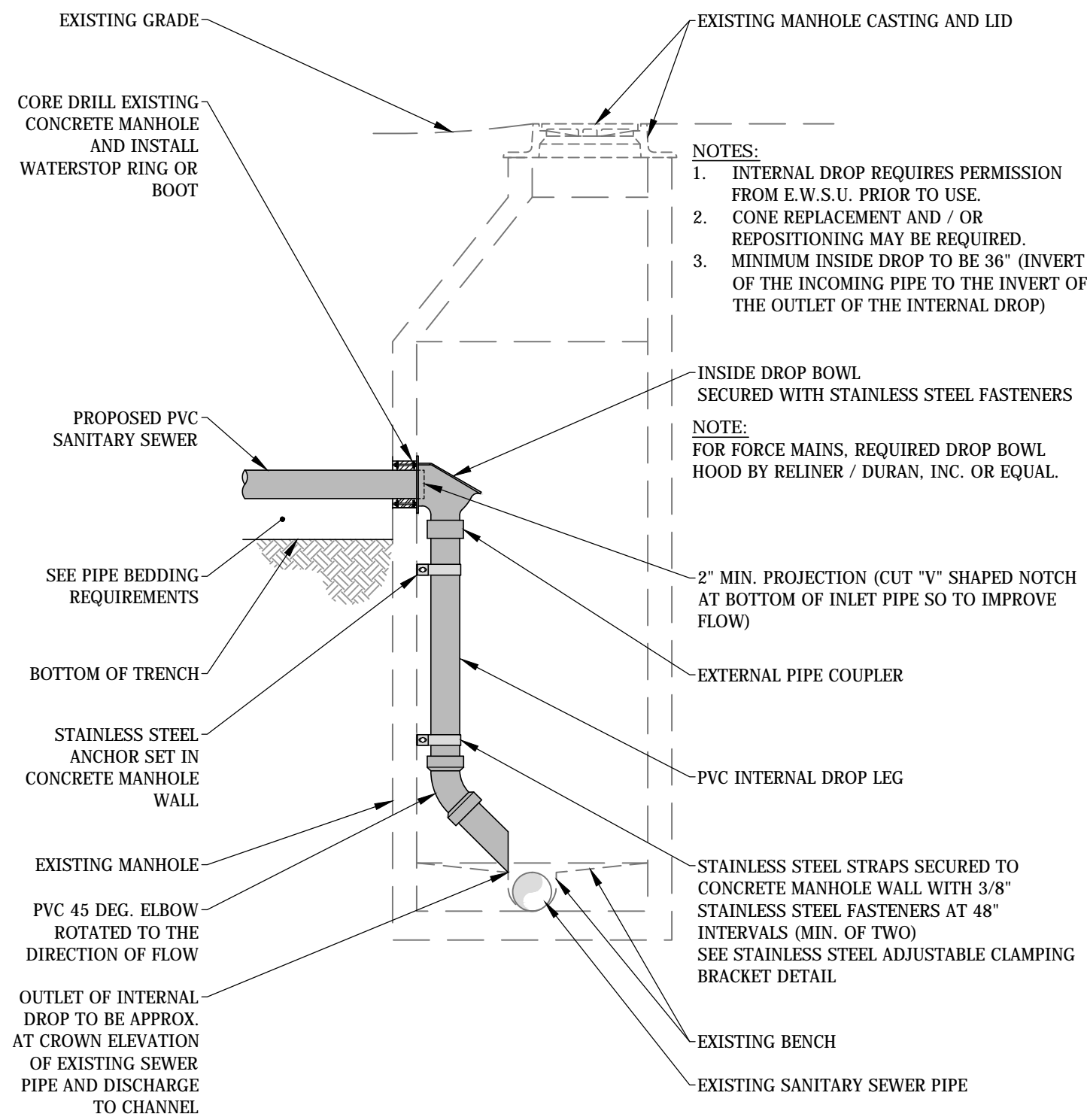
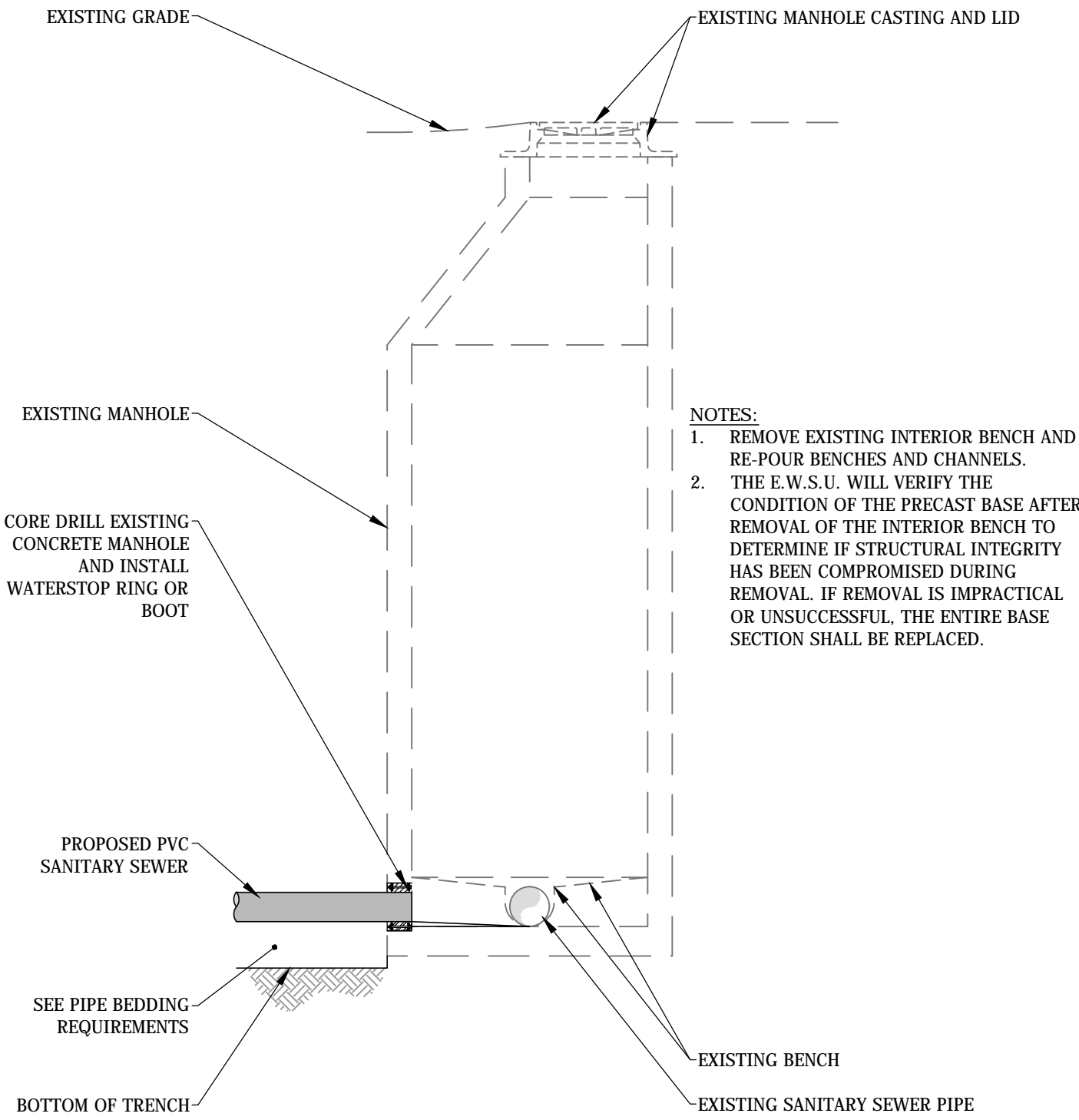


File: J:\ENGINEER\AUTOCAD Standards\Detail Drawings\Sewer\02-DETAILS - WW-09 through WW-16.dwg



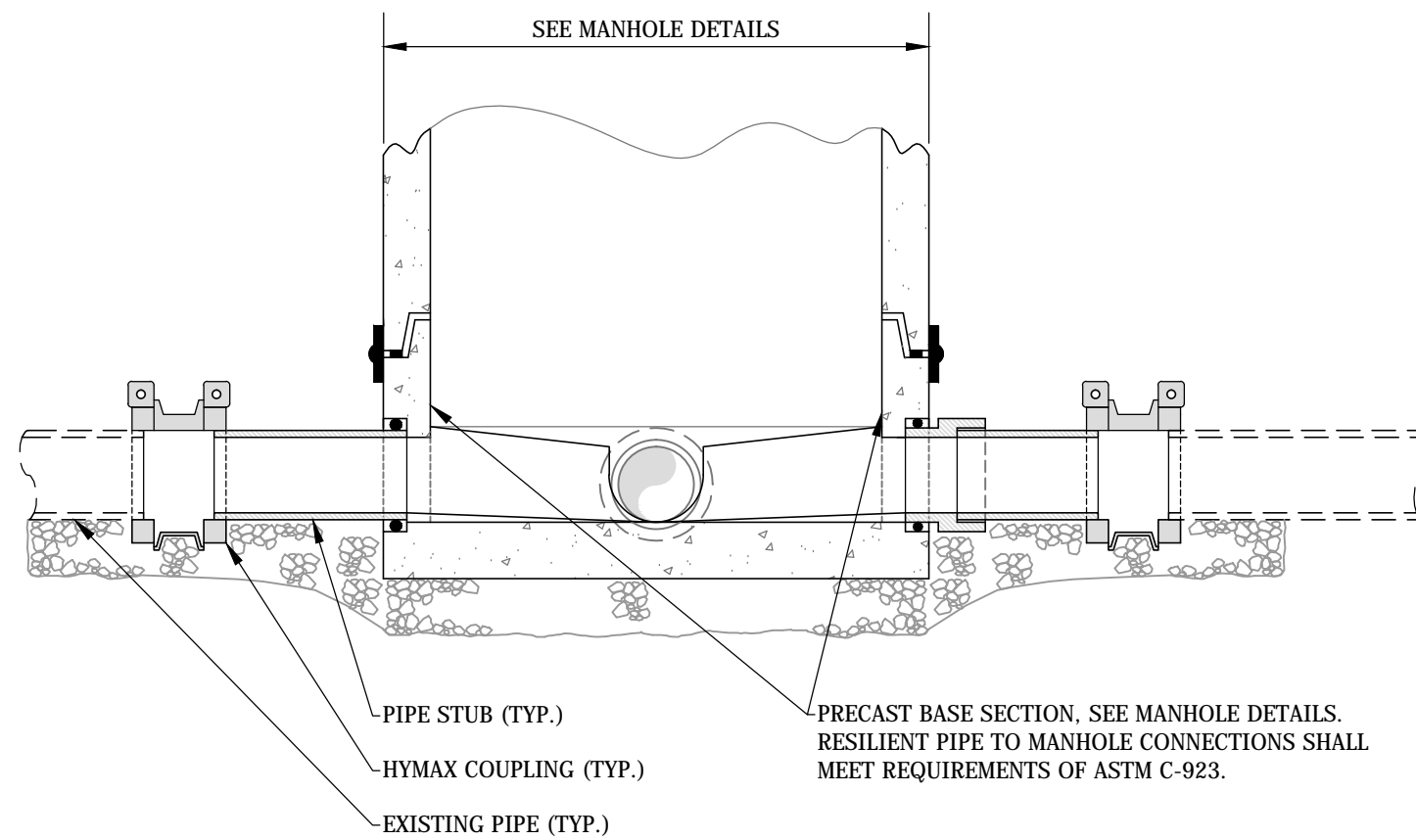
WW-09 - INTERNAL DROP CONNECTION TO EXISTING MANHOLE

SCALE: N.T.S.



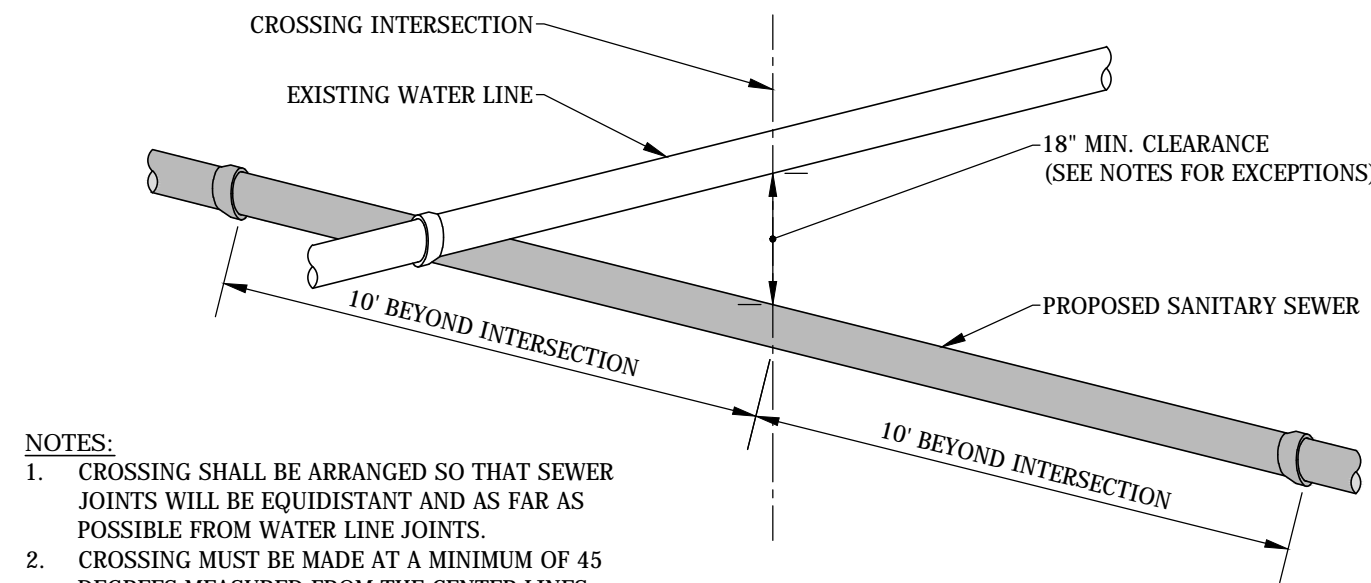
WW-10 - NEW PIPE CONNECTION TO EXISTING MANHOLE

SCALE: N.T.S.



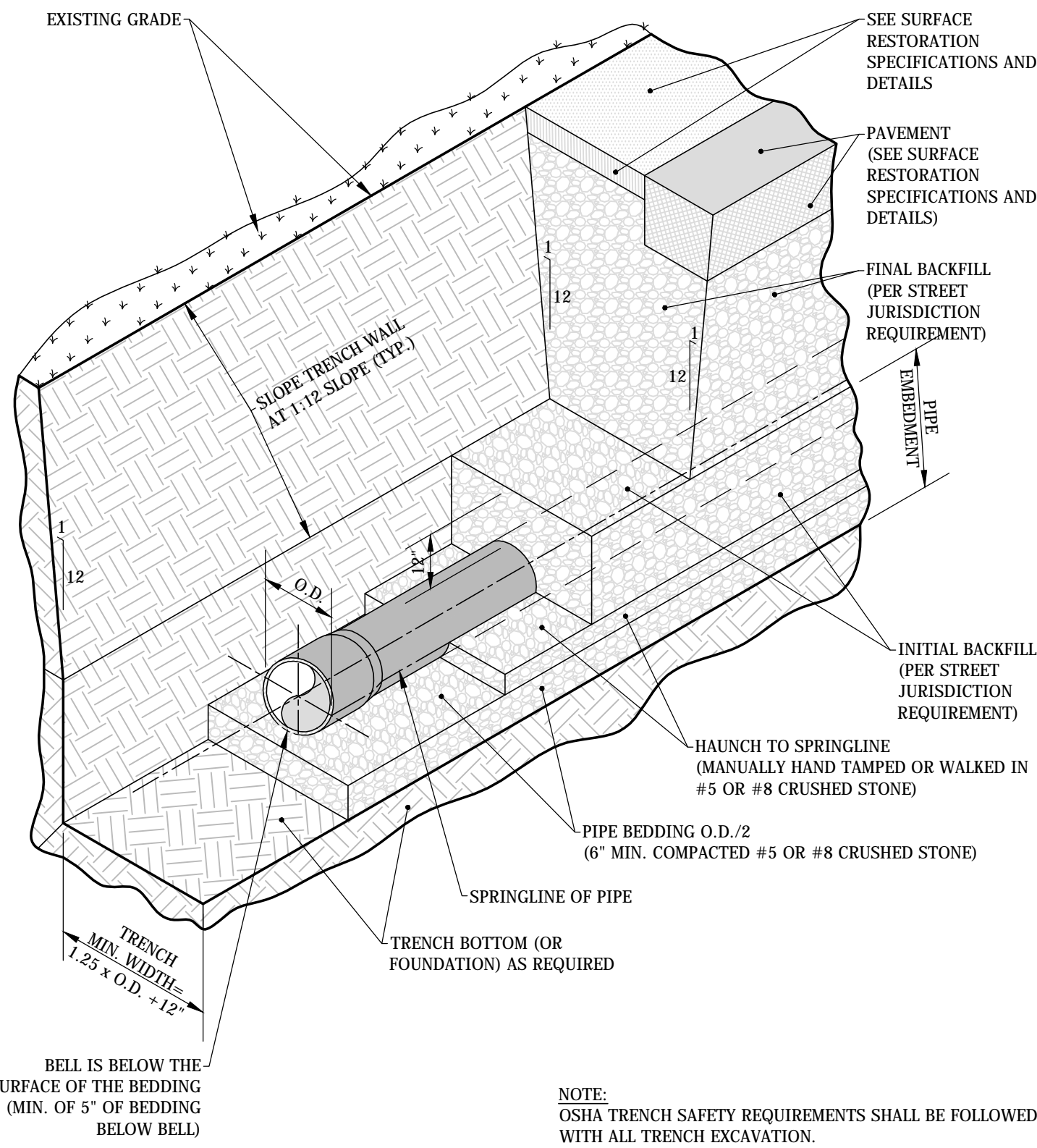
WW-11 - NEW MANHOLE ON EXISTING PIPE

SCALE: N.T.S.



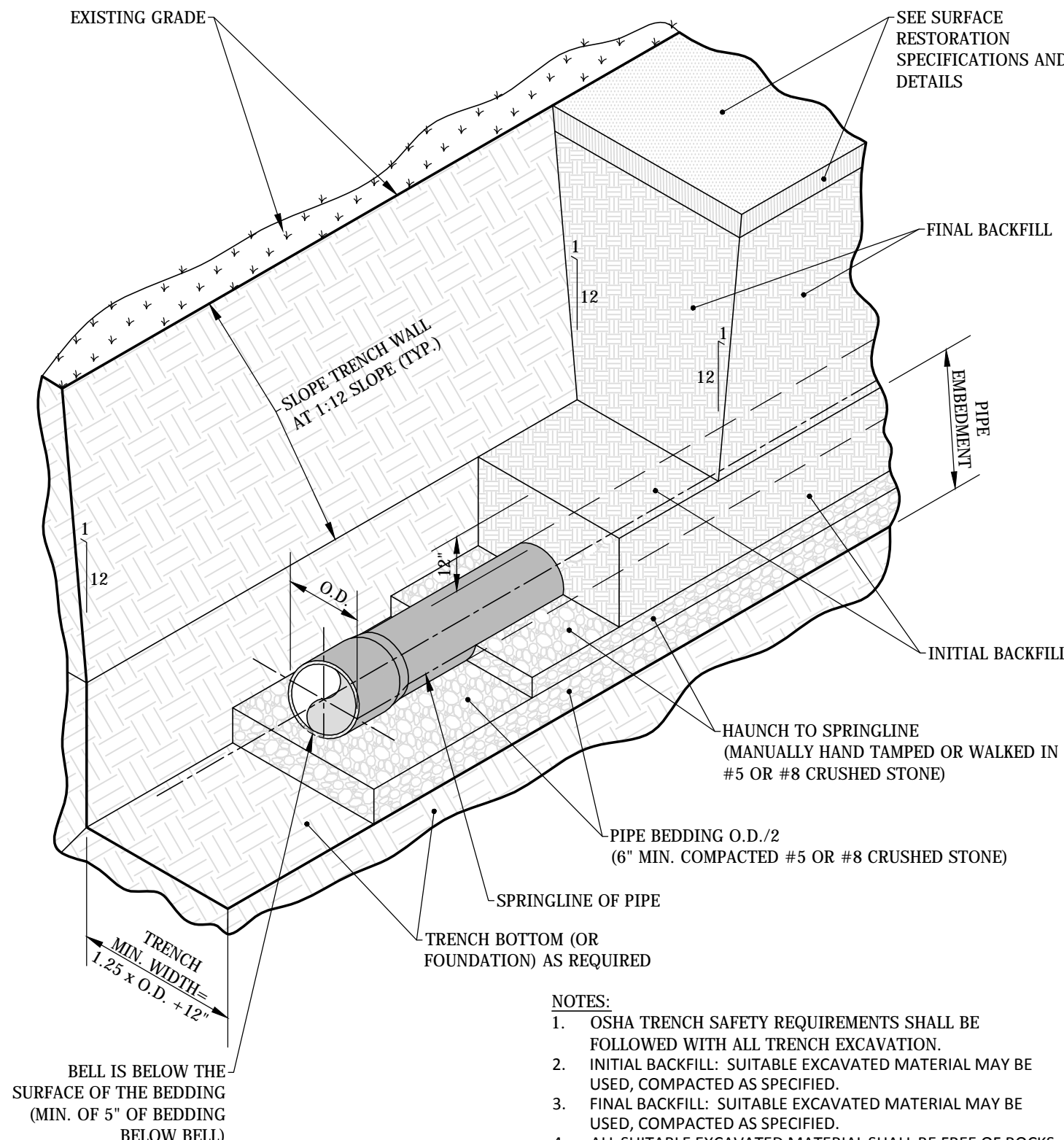
WW-12 - PROPOSED SANITARY SEWER AND EXISTING WATER LINE CROSSING

SCALE: N.T.S.



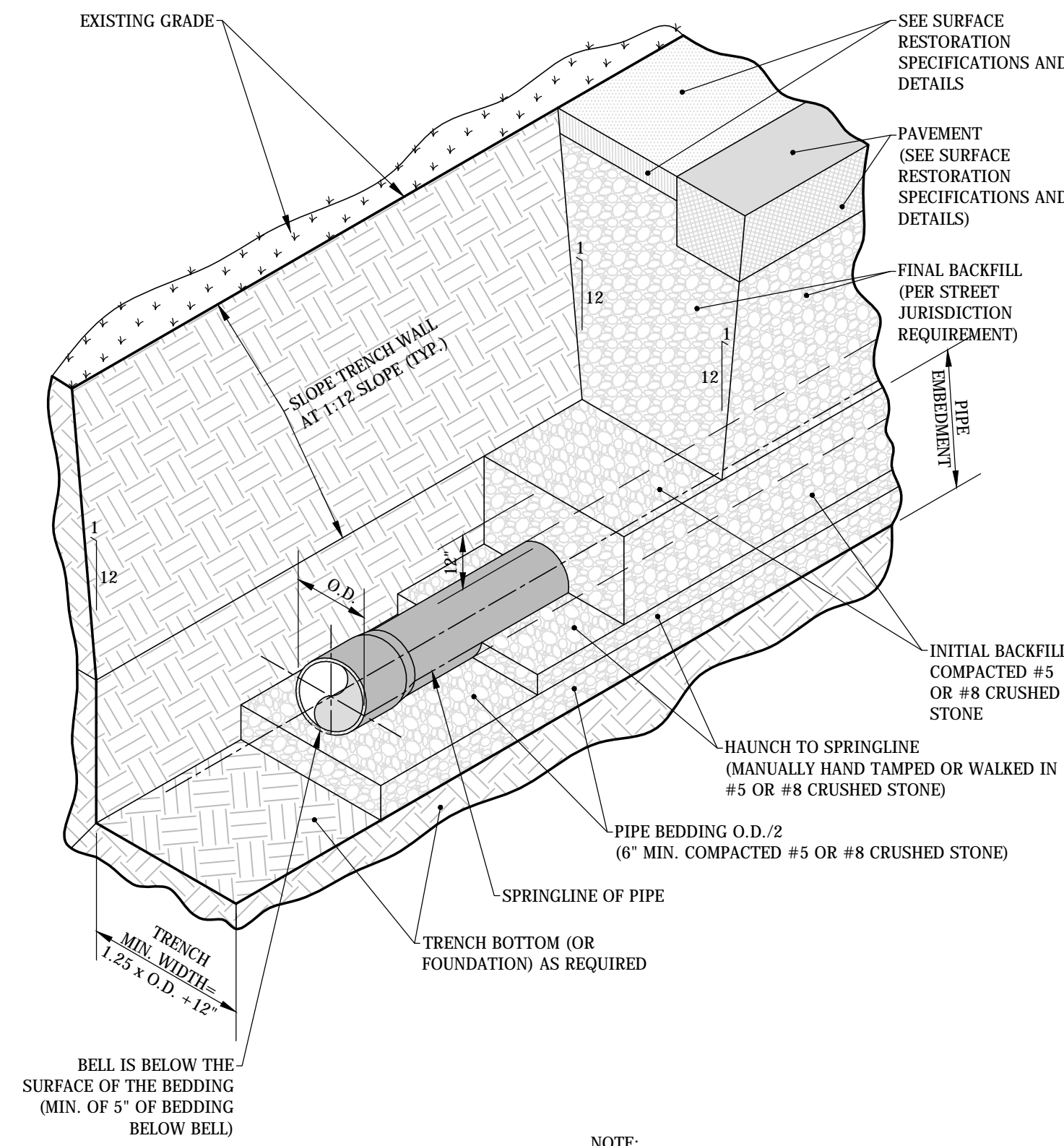
WW-13 - RIGID SANITARY SEWER PIPE BEDDING AND BACKFILL WITHIN 5' OF, OR UNDER PAVEMENT

SCALE: N.T.S.



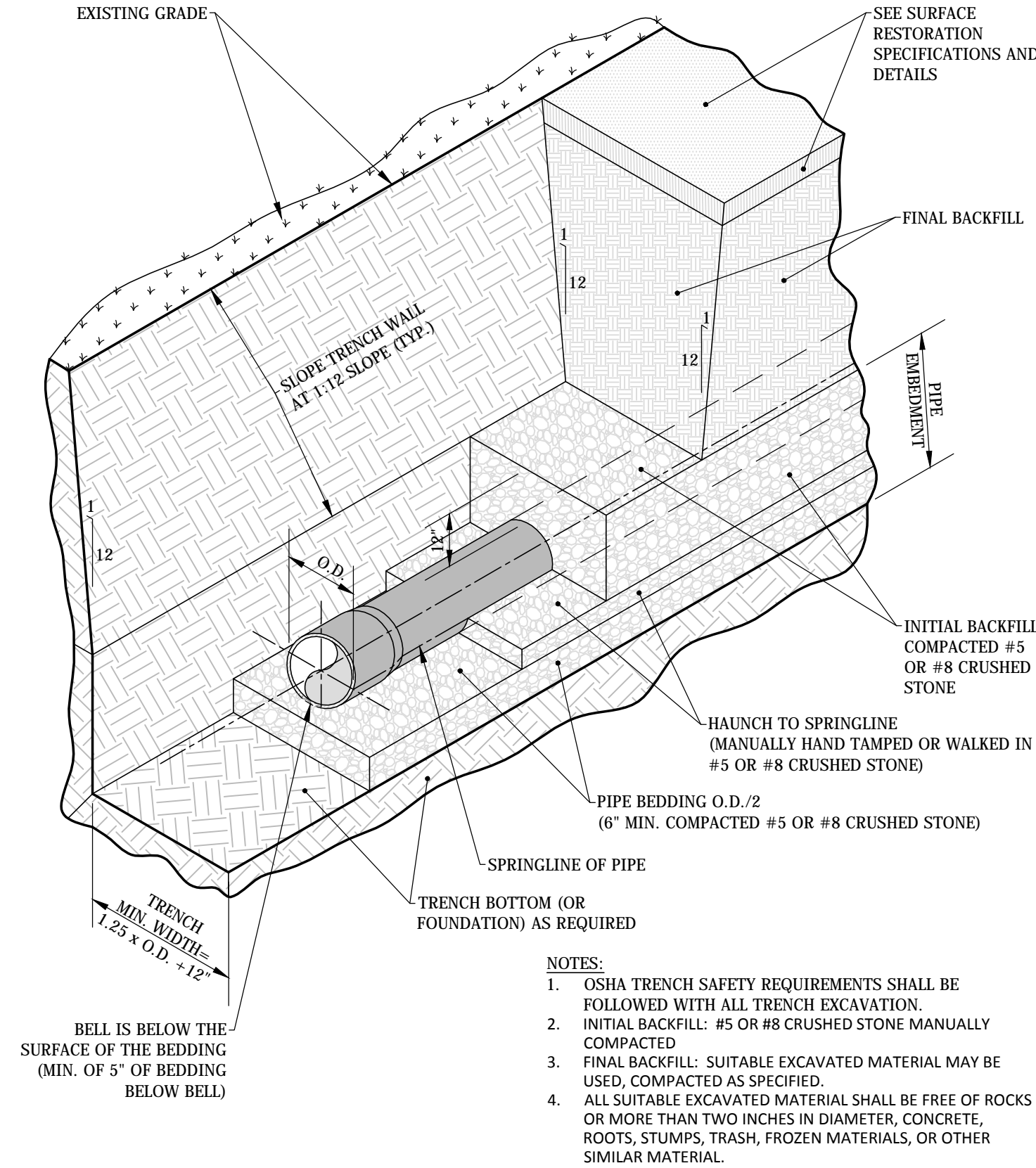
WW-14 - RIGID SANITARY SEWER PIPE BEDDING AND BACKFILL MORE THAN 5' FROM PAVEMENT

SCALE: N.T.S.




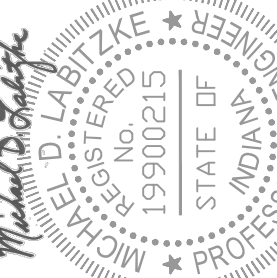
WW-15 - NON-RIGID SANITARY SEWER PIPE BEDDING AND BACKFILL WITHIN 5' OF, OR UNDER PAVEMENT

SCALE: N.T.S.



WW-16 - NON-RIGID SANITARY SEWER PIPE BEDDING AND BACKFILL MORE THAN 5' FROM PAVEMENT

SCALE: N.T.S.

APPROVED: 11/10/15		ADOPTED: 11/10/15	
APPROVED BY: M.D.L.		SCALE: N.T.S.	
FIGURES: WW-09 THROUGH WW-16		TITILE: _____ DATE: _____	
EVANSVILLE WATER AND SEWER UTILITY 1931 Allens Lane - Evansville, IN 47720 (812) 421-2126			
STANDARD SANITARY SEWER DETAILS			
 Evansville WATER AND SEWER UTILITY			
			
REVISIONS		APPROVED	
DATE	DESCRIPTION		
DRAWING NO: _____			
SHEET NO: _____			
2 of 4			