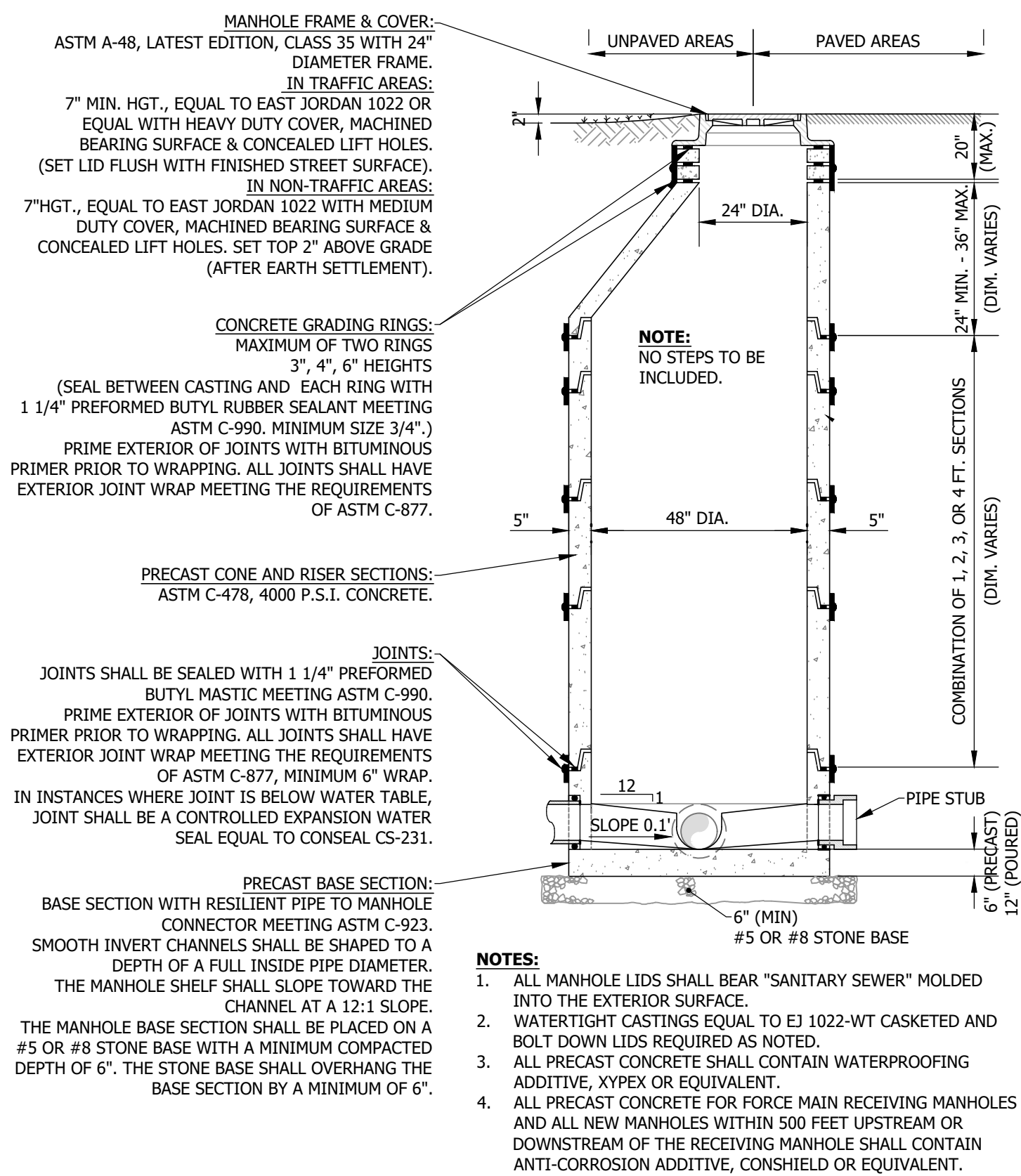
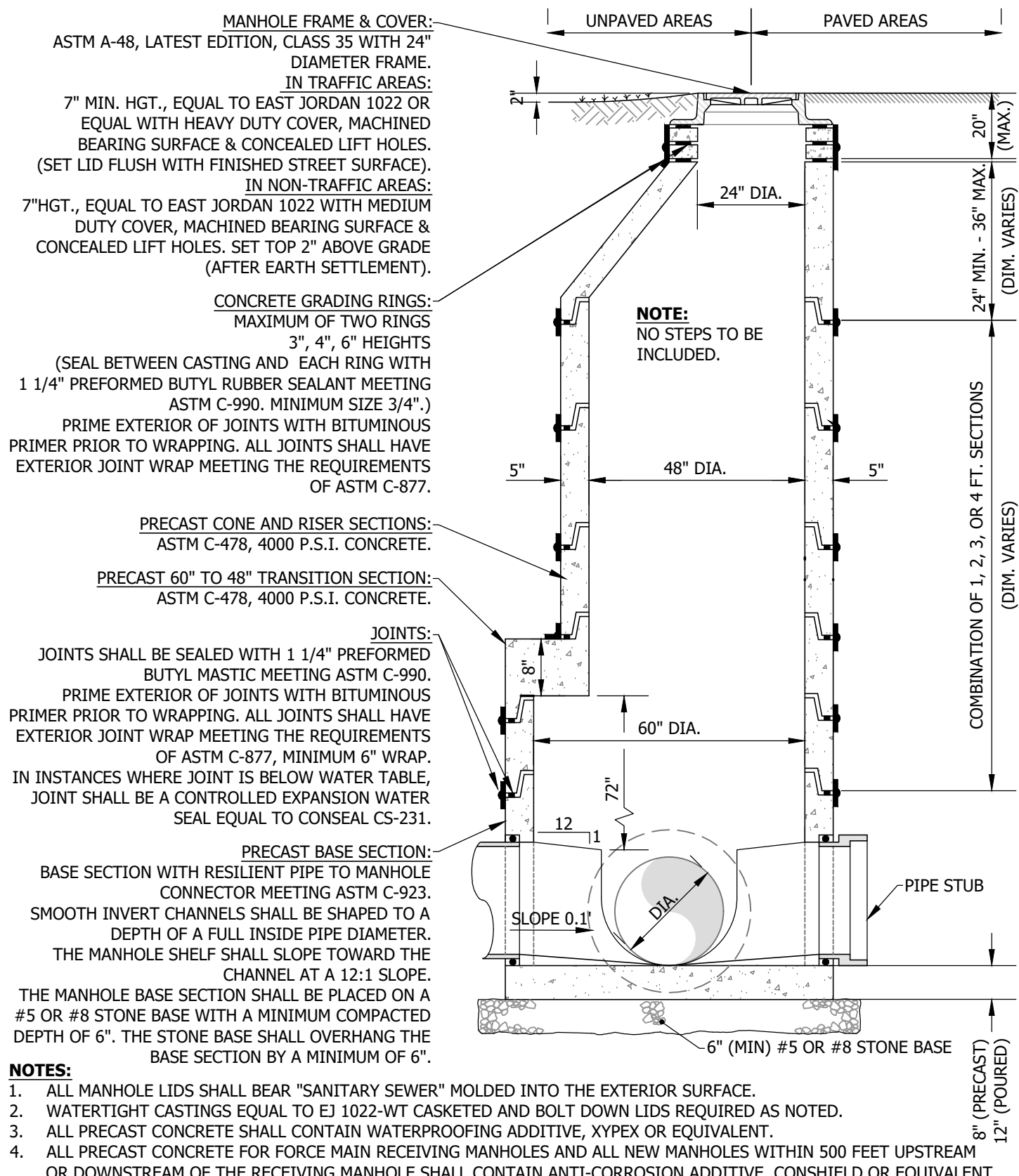


File: J:\ENGINEER\AUTOCAD Standards\Detail Drawings\Sewer\01-DETAILS - WW-01 through WW-08.dwg



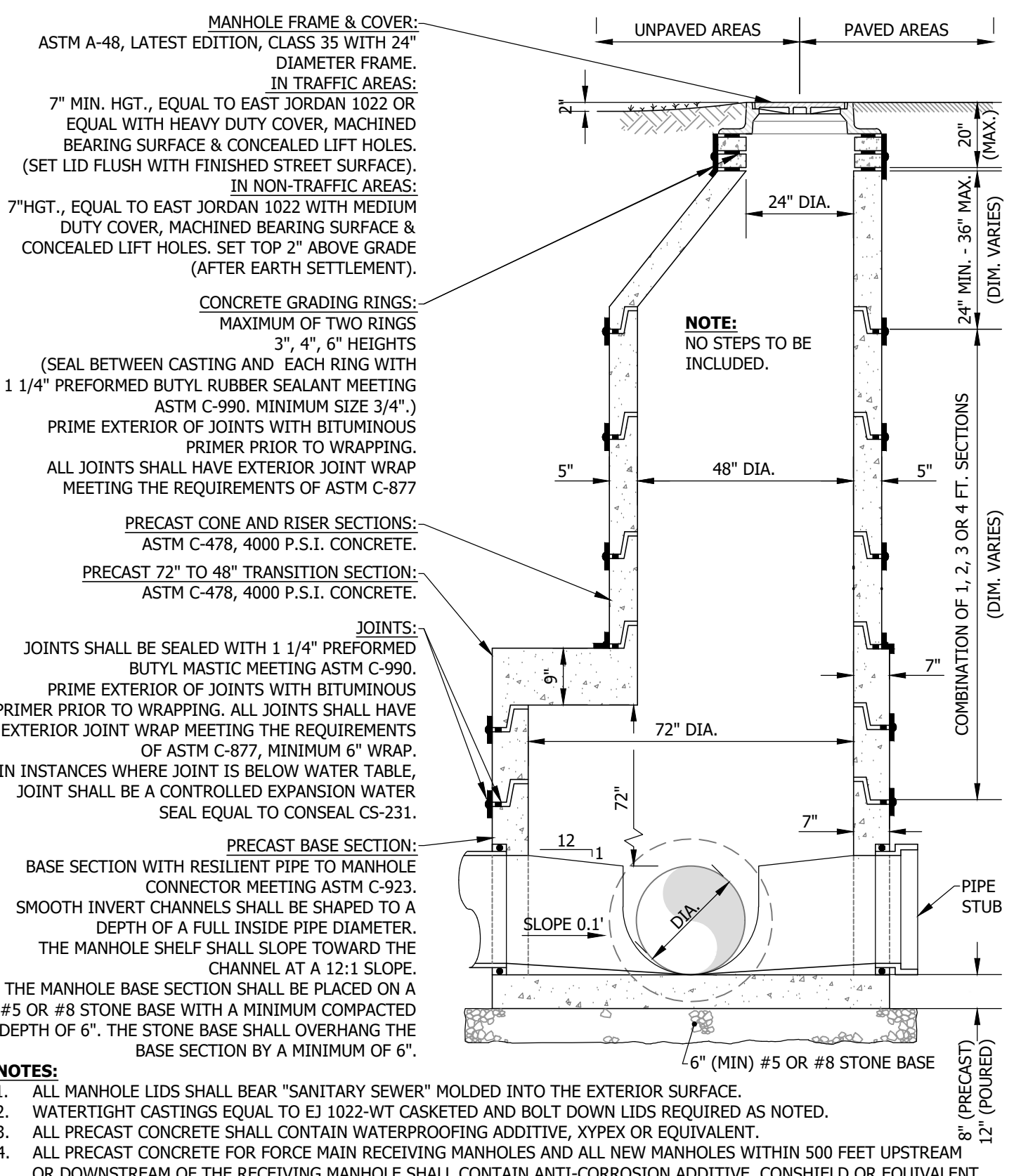
WW-01 - STANDARD PRECAST 48" MANHOLE

SCALE: N.T.S.



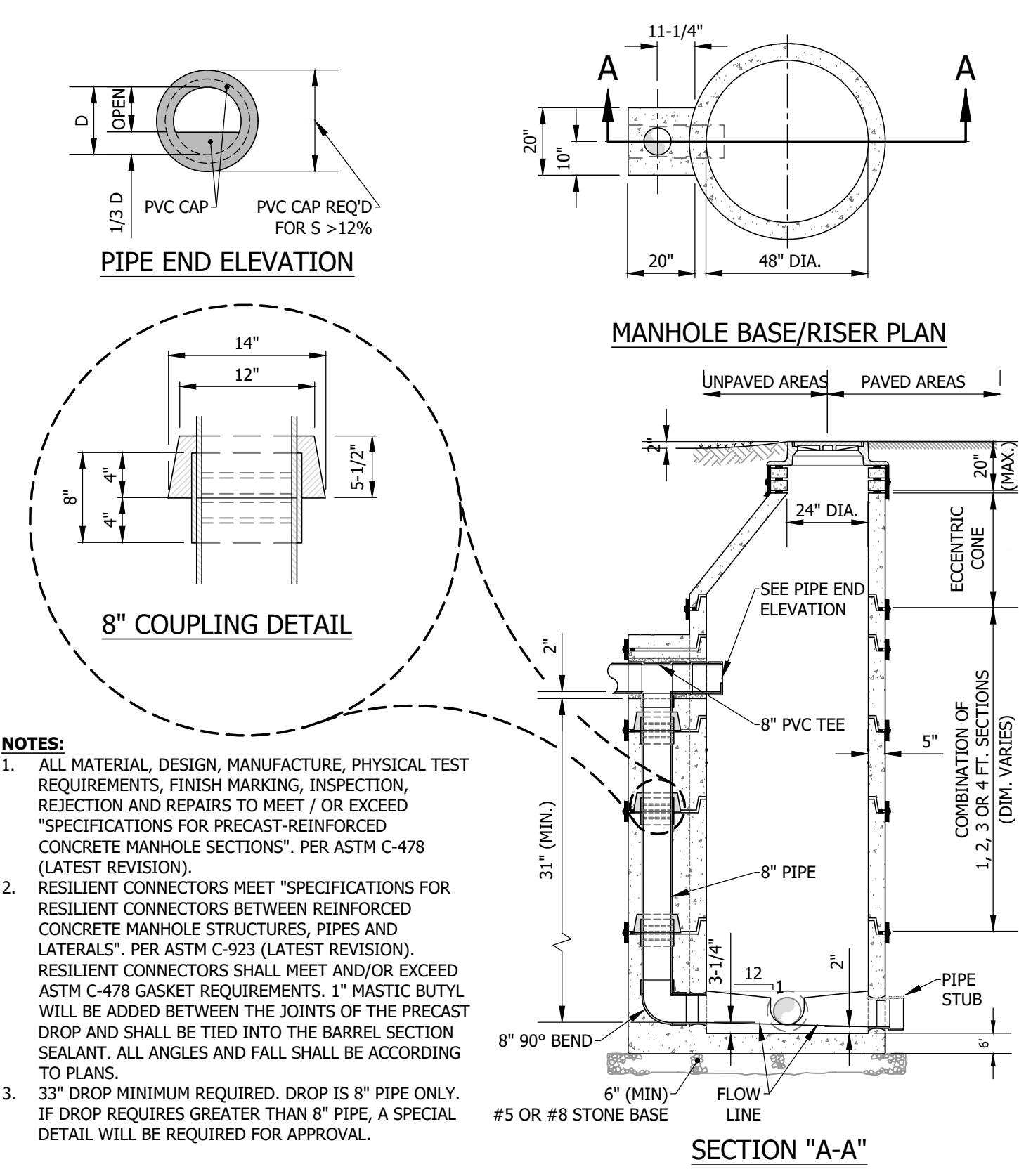
WW-02 - STANDARD PRECAST CONCRETE 60" MANHOLE

SCALE: N.T.S.



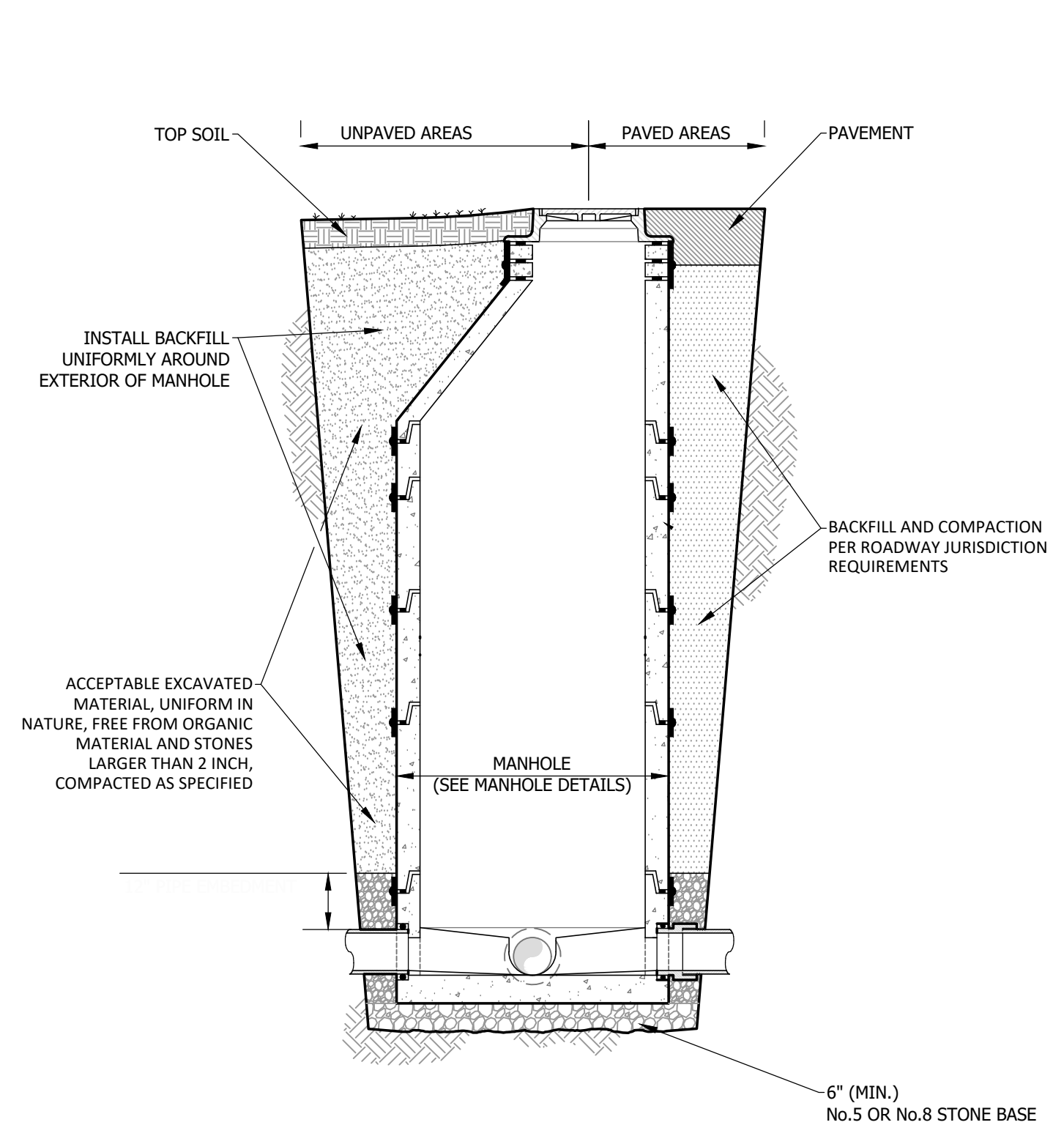
WW-03 - STANDARD PRECAST CONCRETE 72" MANHOLE

SCALE: N.T.S.



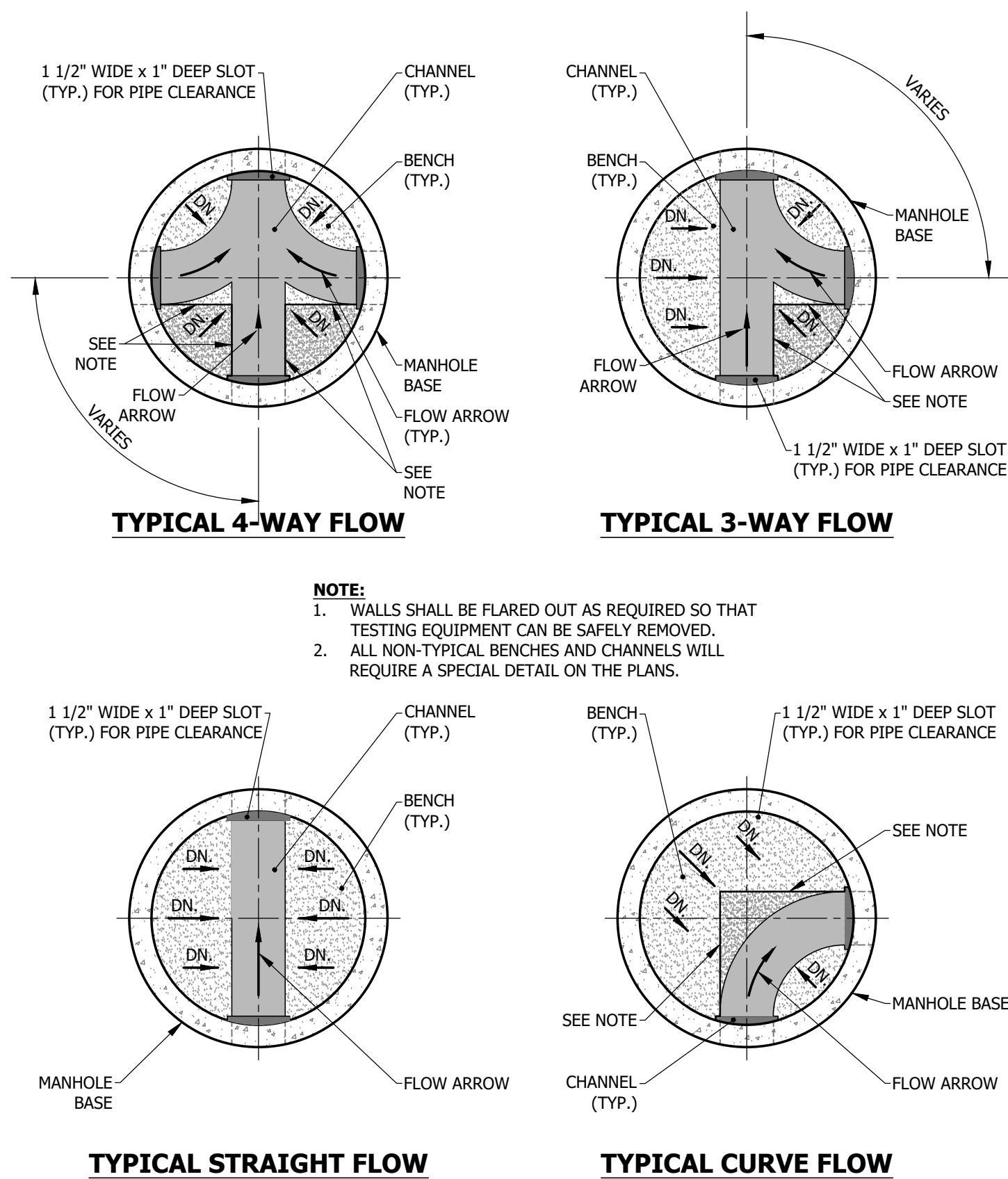
WW-04 - PRECAST EXTERNAL DROP MANHOLE
(REQUIRED ON ALL DROPS GREATER THAN 24")

SCALE: N.T.S.



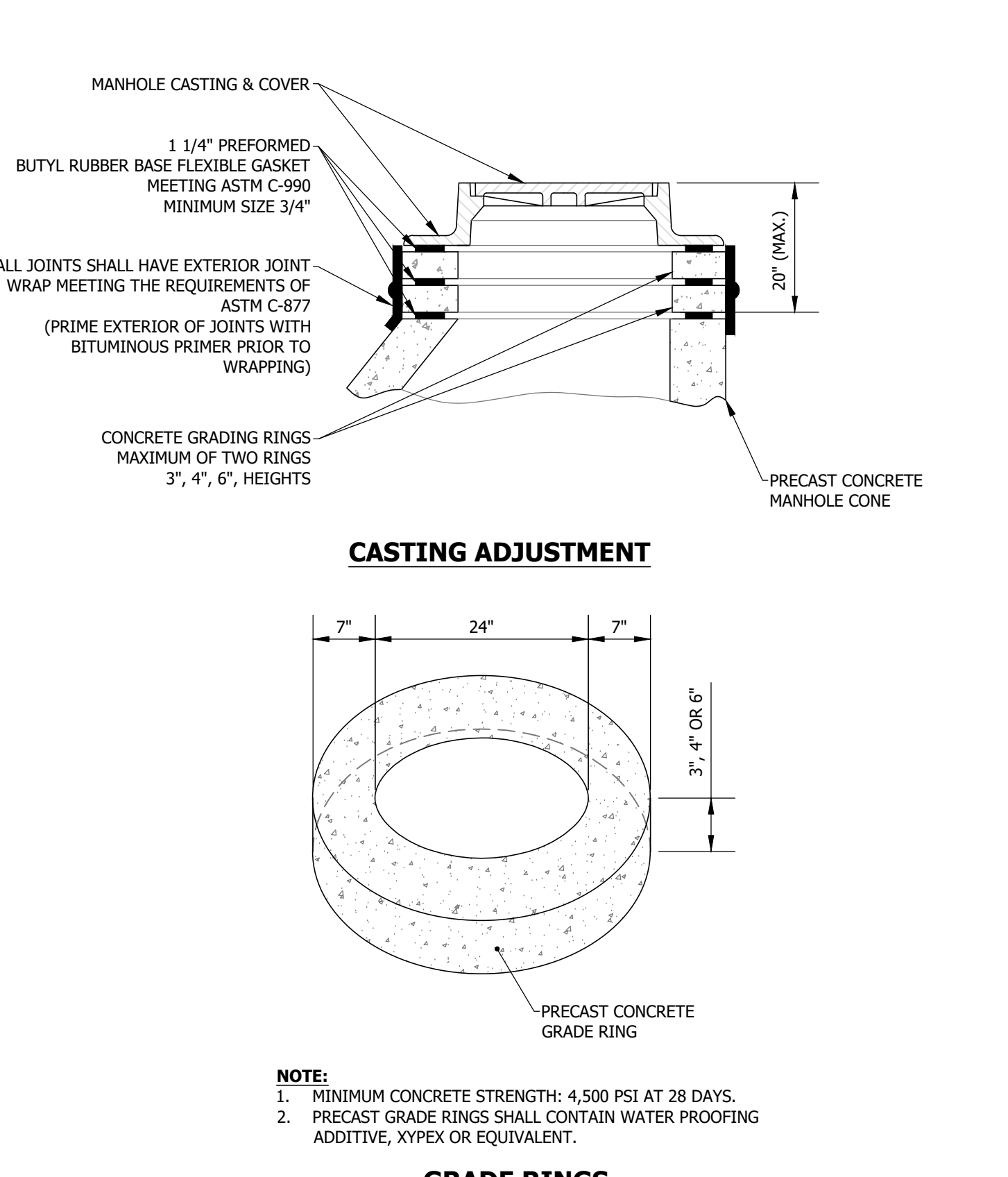
WW-05 - STANDARD MANHOLE BACKFILL

SCALE: N.T.S.



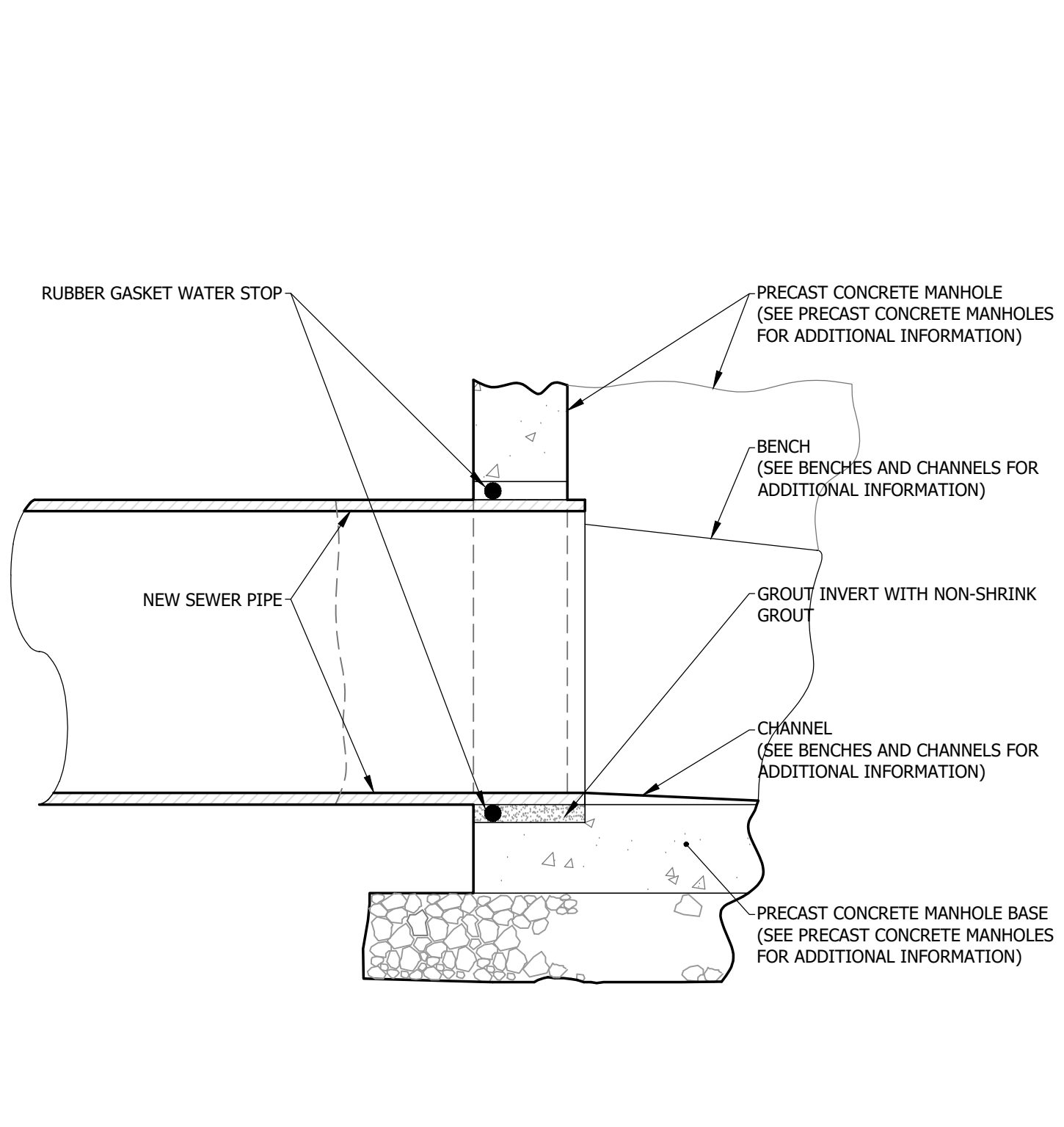
WW-06 - STANDARD MANHOLE BENCHES AND CHANNELS

SCALE: N.T.S.



WW-07 - STANDARD CASTING ADJUSTMENT AND GRADE RINGS

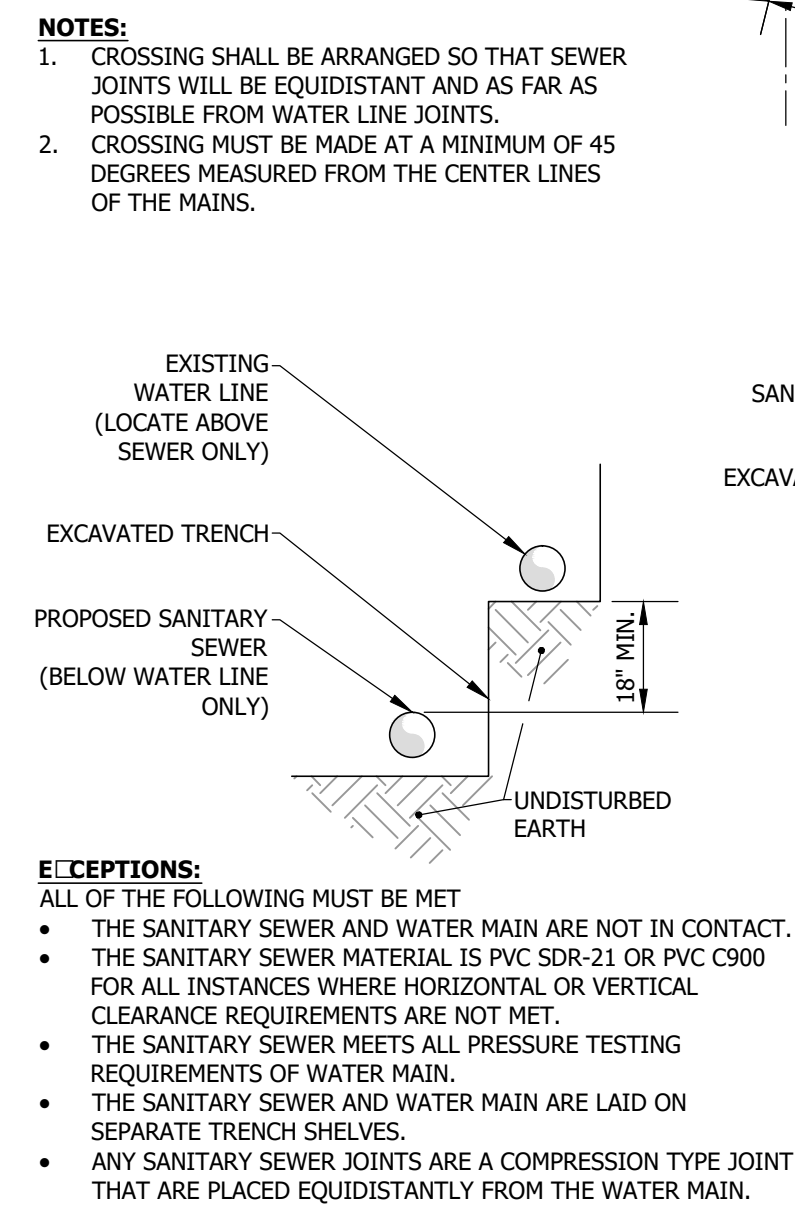
SCALE: N.T.S.






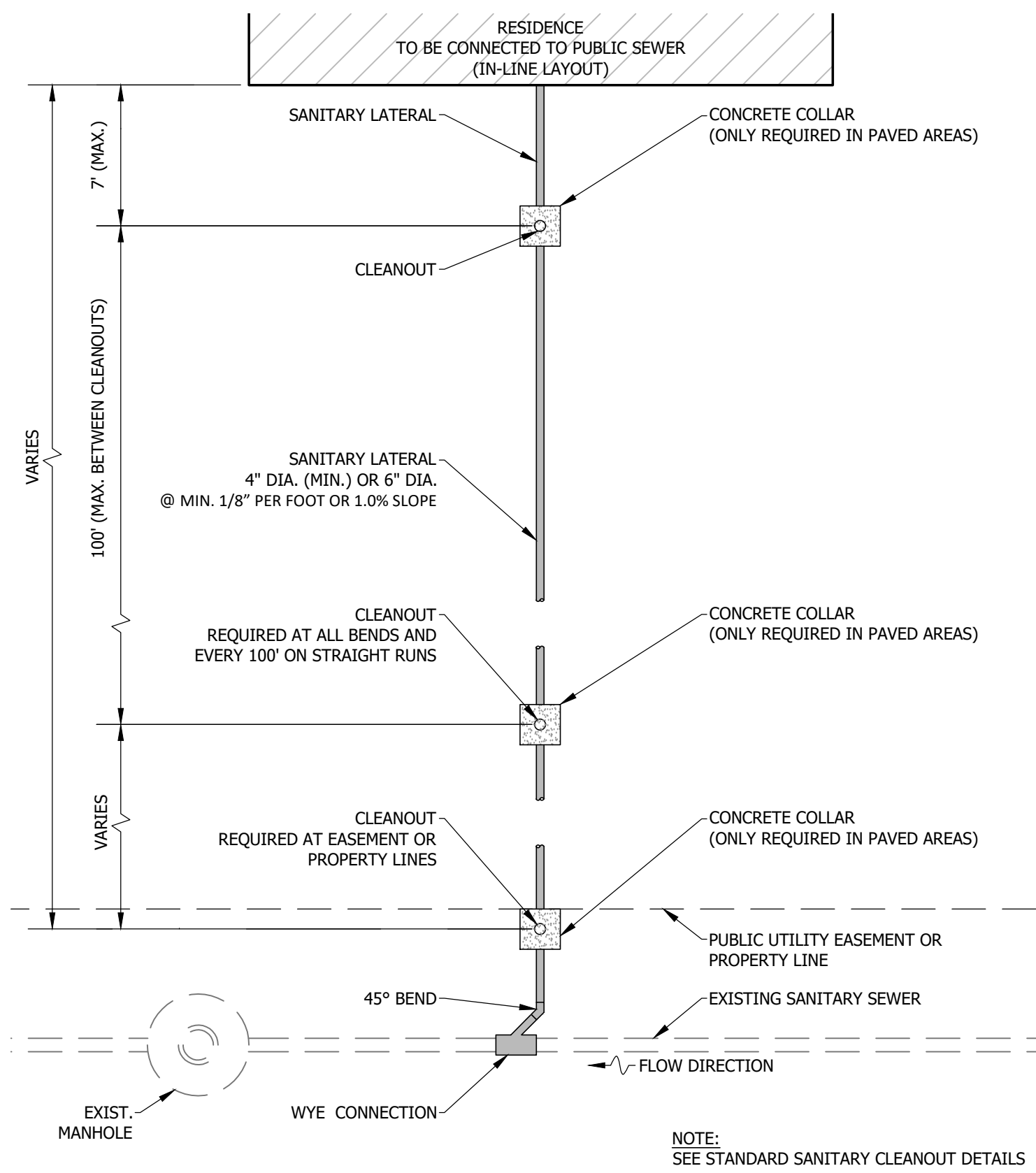
WW-08 - STUB-OUT AT MANHOLE

SCALE: N.T.S.

EVANSVILLE WATER AND SEWER UTILITY 1931 Aliens Lane - Evansville, IN 47720 (812) 421-2126			APPROVED: 02/28/17	ADOPTED: 02/28/17
			APPROVED BY: M.D.L.	SCALE: N.T.S.
			FIGURES: WW-01 THROUGH WW-08	
STANDARD SANITARY SEWER DETAILS			APPROVED: _____	DATE: _____
			SHEET NO: 1	
			DRAWING NO: _____	
			REVISIONS	
			DATE	
			DESCRIPTION	
			APPROVED	

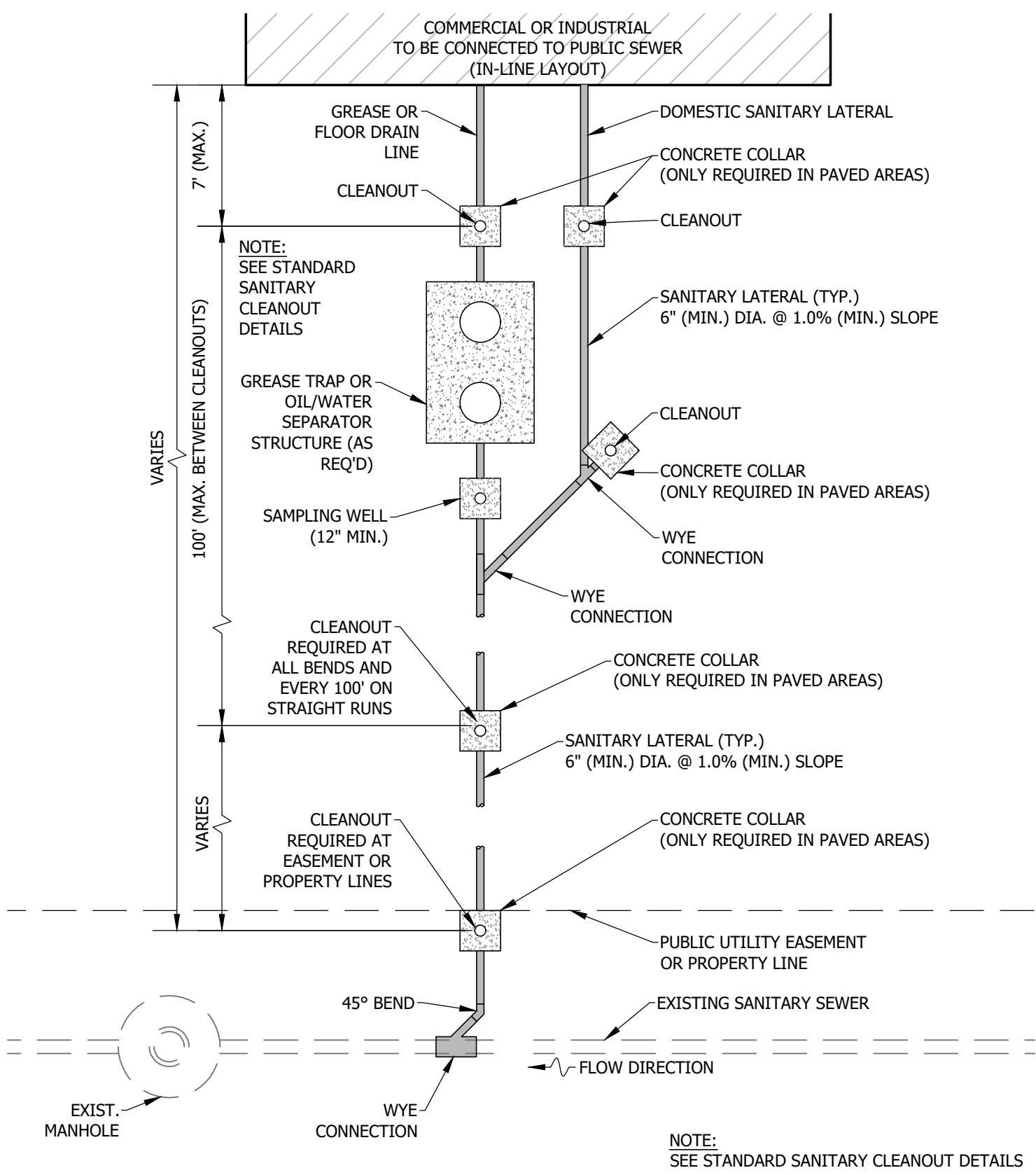


DRAWING NO: _____		SHEET NO: 2 of 4		REVISIONS								EVANSVILLE WATER AND SEWER UTILITY 1931 Allens Lane - Evansville, IN 47720 (812) 421-2126		APPROVED: _____ APPROVED BY: _____ M.D.L.: _____ FIGURES: WW-09 THROUGH WW-16		APPROVED: _____ TITLE: _____ DATE: _____	
										STANDARD SANITARY SEWER DETAILS				APPROVED: _____ TITLE: _____ DATE: _____			



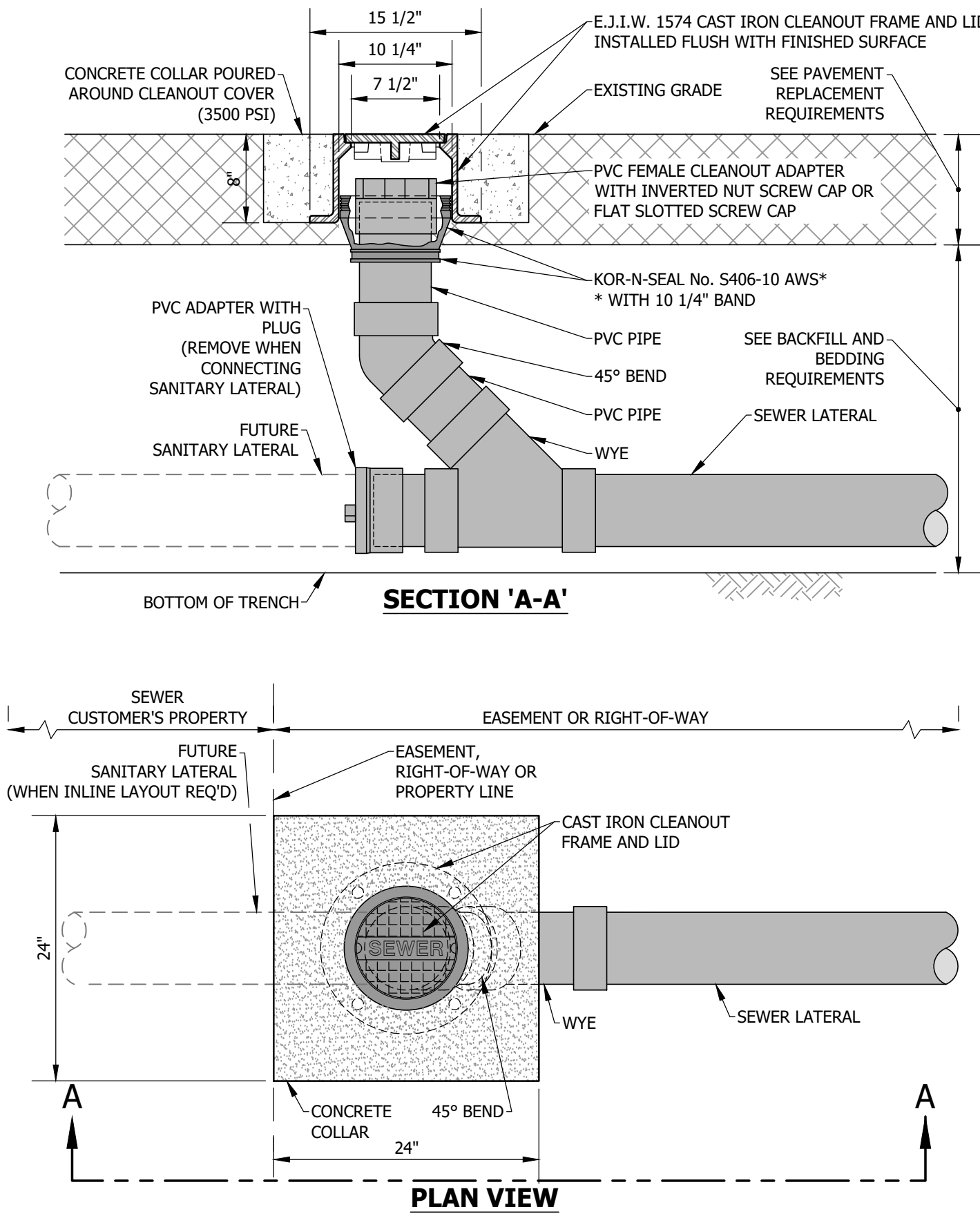
WW-17 - LATERAL SEWER CONNECTION LAYOUT
(RESIDENTIAL)

SCALE: N.T.S.



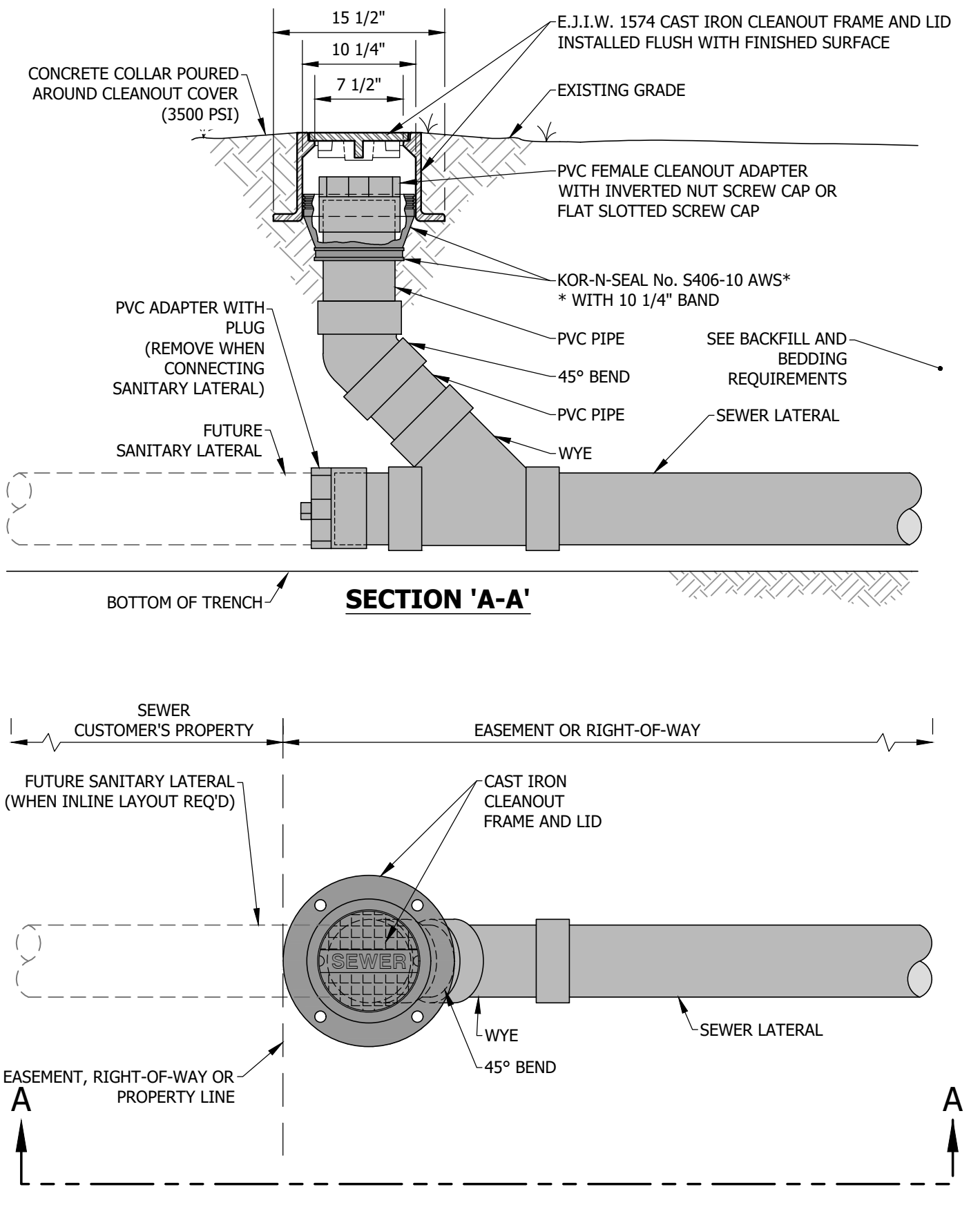
WW-18 - LATERAL SEWER CONNECTION LAYOUT
(COMMERCIAL)

SCALE: N.T.S.



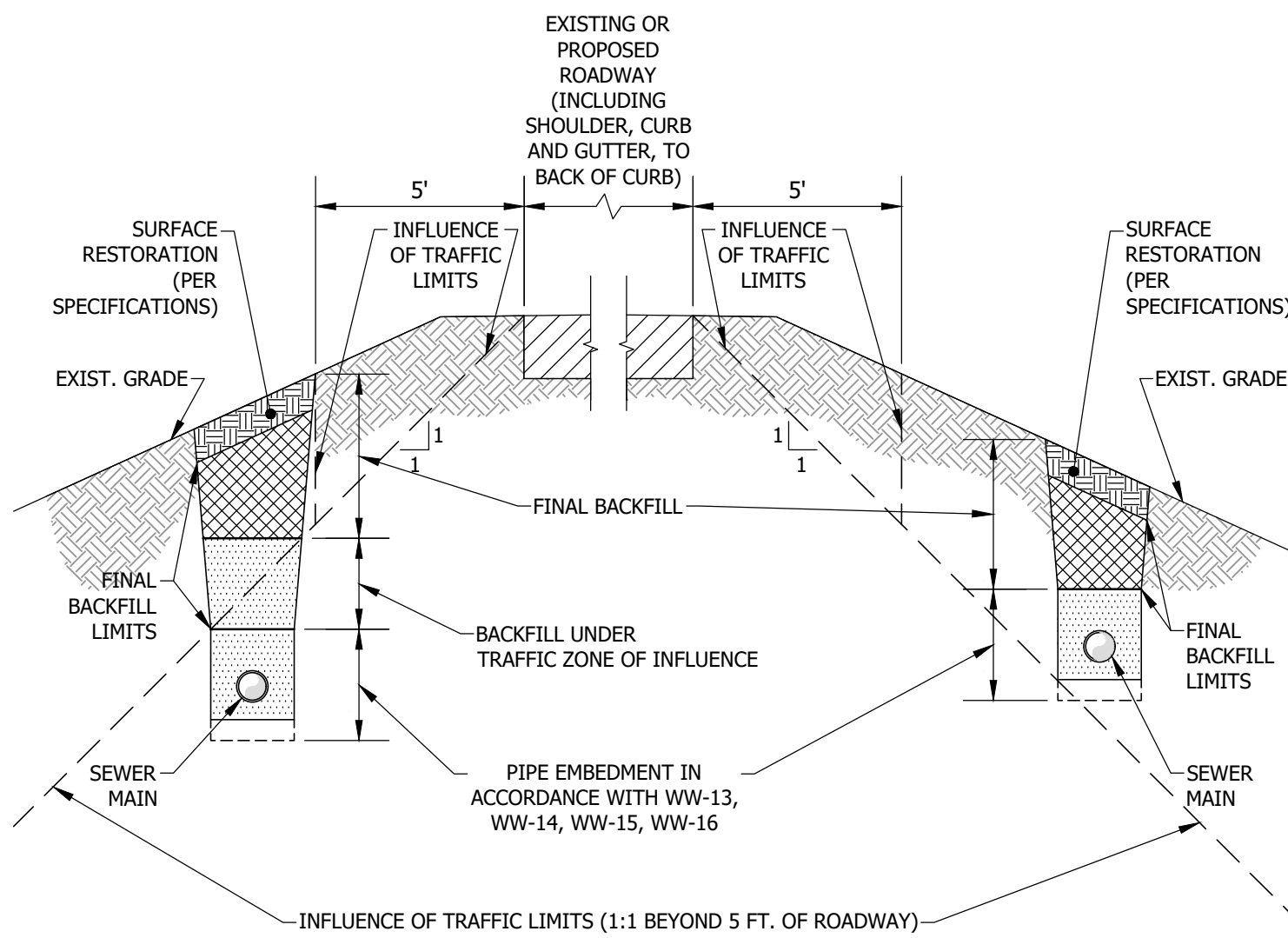
WW-19 - STANDARD SANITARY CLEANOUT IN PAVED AREAS

SCALE: N.T.S.



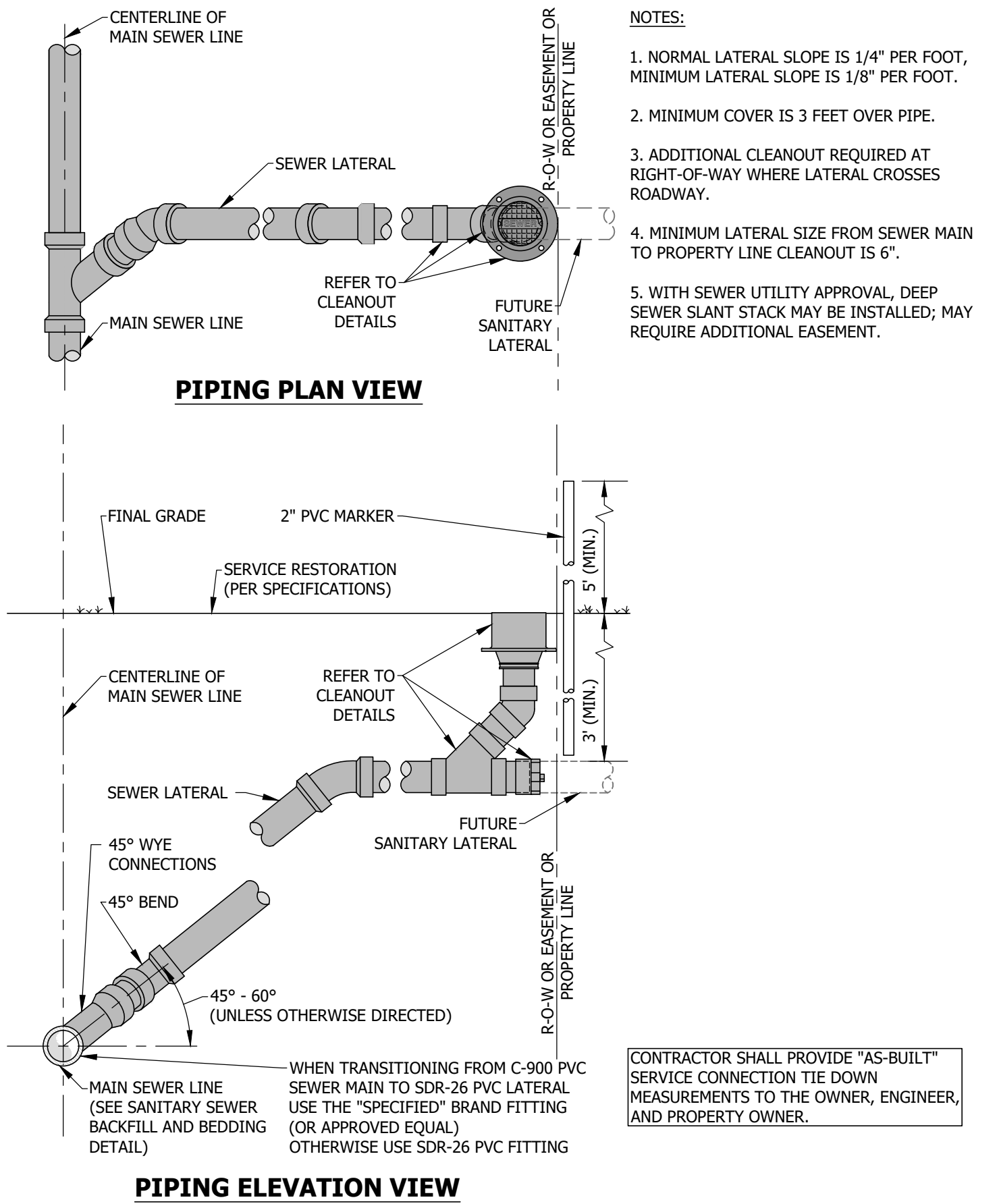
WW-20 - STANDARD SANITARY CLEANOUT IN
UN-PAVED AREAS

SCALE: N.T.S.



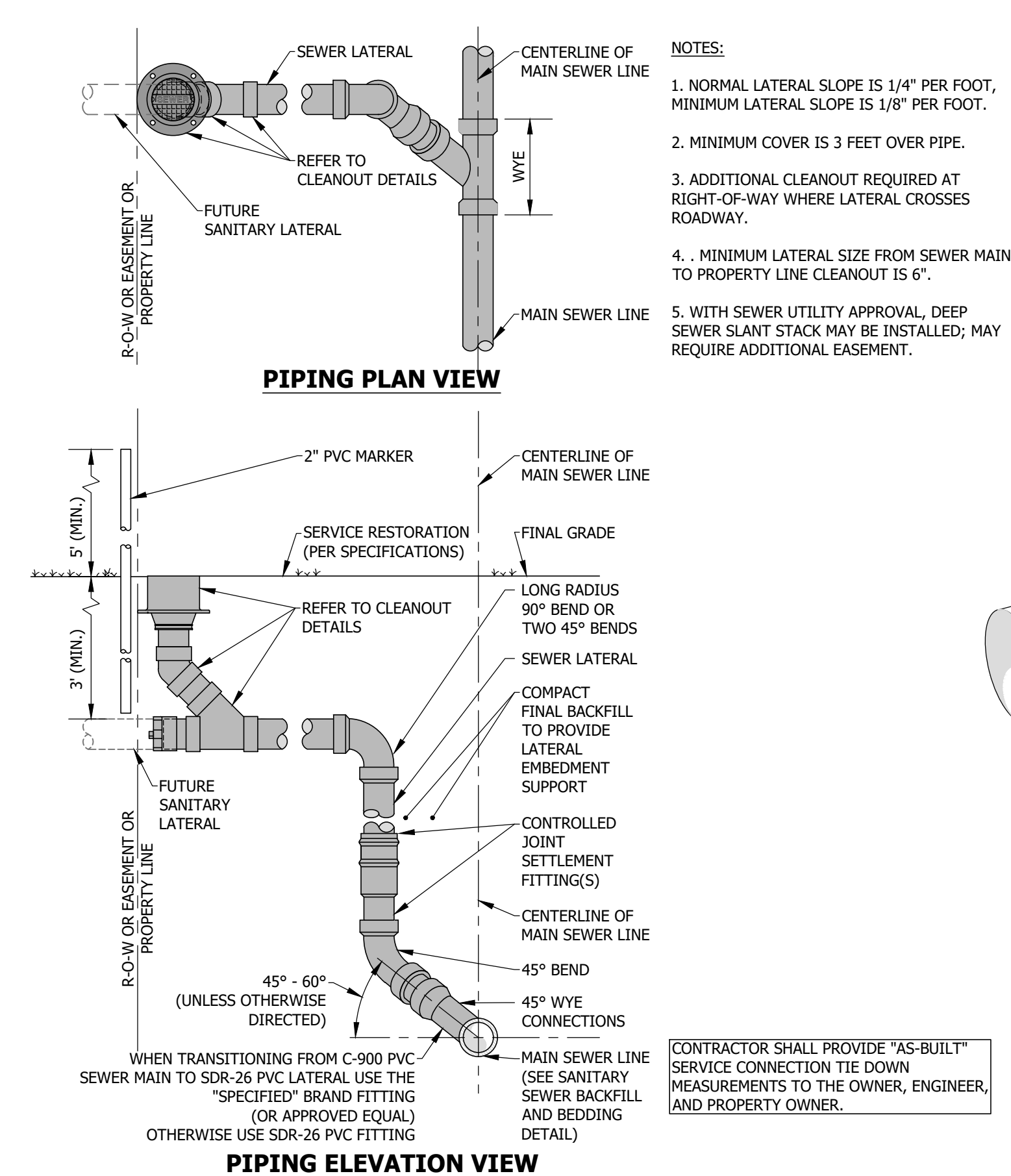
WW-21 - FINAL BACKFILL AND TRAFFIC INFLUENCE DETAIL

SCALE: N.T.S.



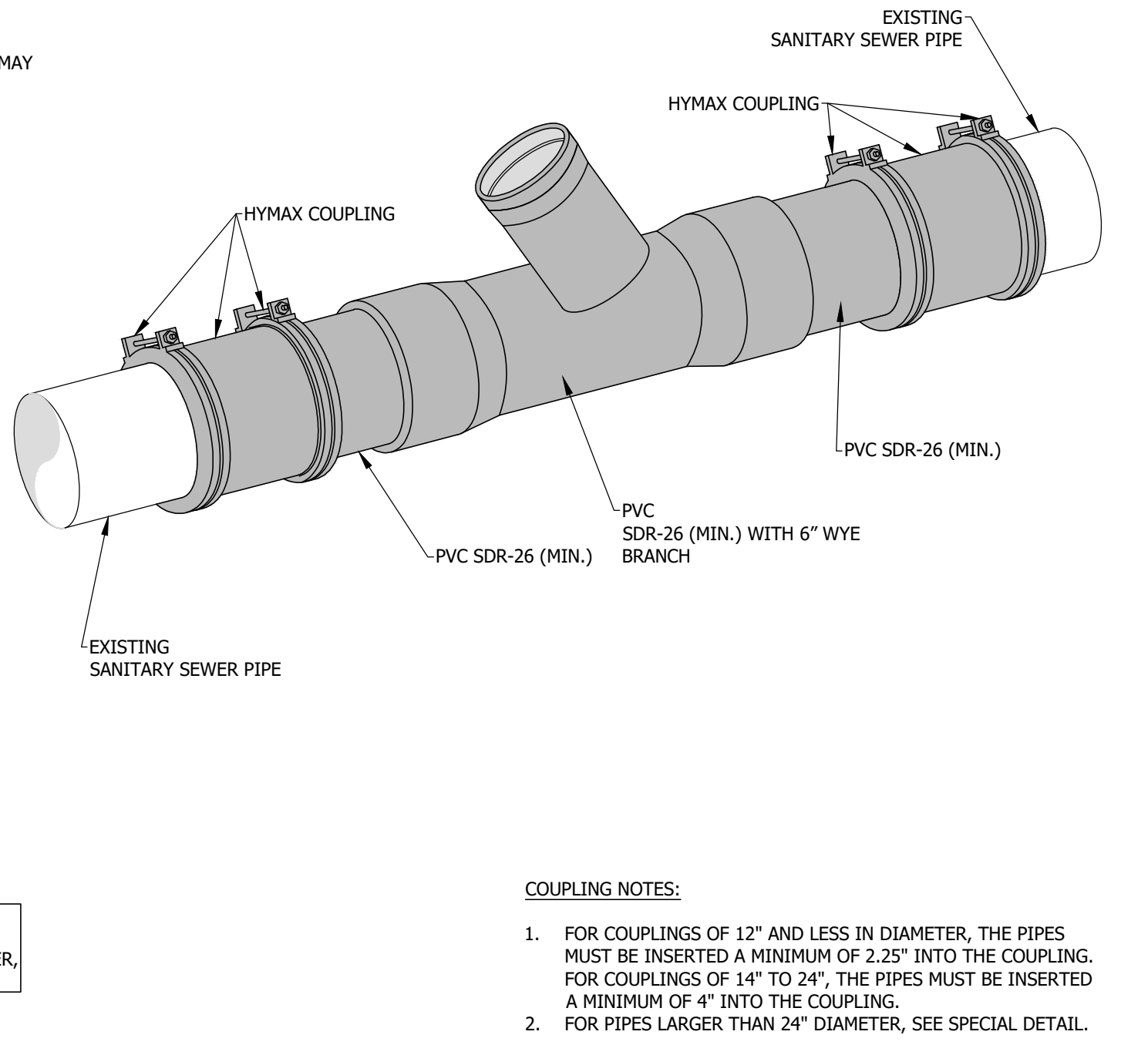
WW-22 - SHALLOW SANITARY SERVICE CONNECTION

SCALE: N.T.S.





WW-23 - DEEP SANITARY SERVICE CONNECTION

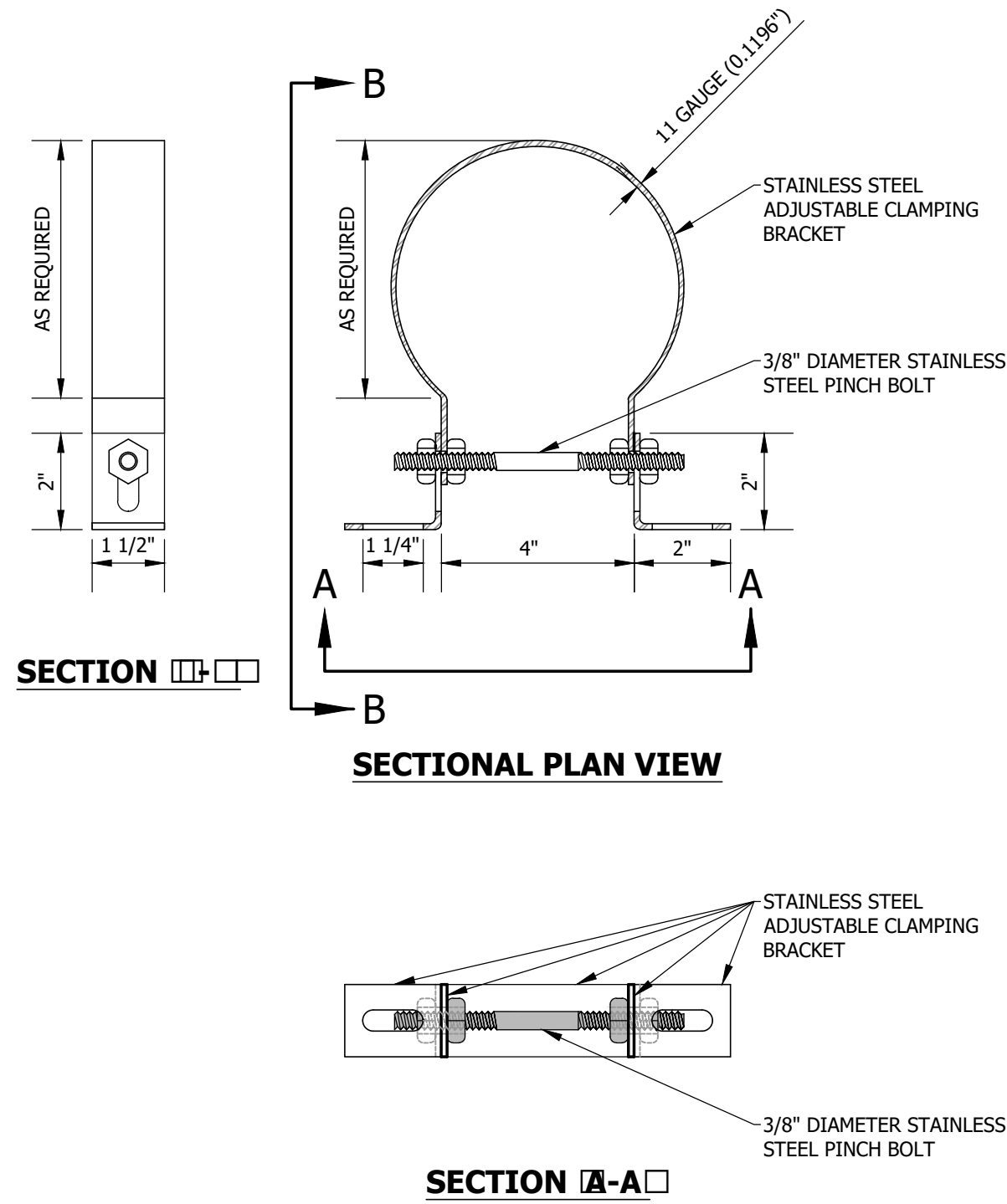
SCALE: N.T.S.



WW-24 - SANITARY SERVICE CONNECTION TO
EXISTING PIPE

SCALE: N.T.S.

<div>EVANSVILLE WATER AND SEWER UTILITY</div> <div>1931 Allens Lane - Evansville, IN 47720 (812) 421-2126</div>		APPROVED: 02/28/17		ADOPTED: 02/28/17	
		APPROVED BY: M.D.L.		SCALE: N.T.S.	
		FIGURES: WW- 17 THROUGH WW- 24			
		APPROVED: _____		DATE: _____	
<div><div>Evansville</div><div>WATER AND SEWER UTILITY</div></div> <div></div>		<div>STANDARD SANITARY SEWER DETAILS</div>			
<div>DRAWING NO: _____</div>		<div>REVISIONS</div>		<div>APPROVED</div>	
<div>SHEET NO: 3</div>		<div>DATE</div>		<div>DESCRIPTION</div>	
<div>3 of 4</div>					



SPECIFICATIONS:
1) CLAMP AND BRACKETS IS TYPE 304 STAINLESS STEEL, 11 GAUGE (.1196").
2) 3/8" Ø PINCH BOLT AND NUTS IS TYPE 18-8 STAINLESS STEEL.

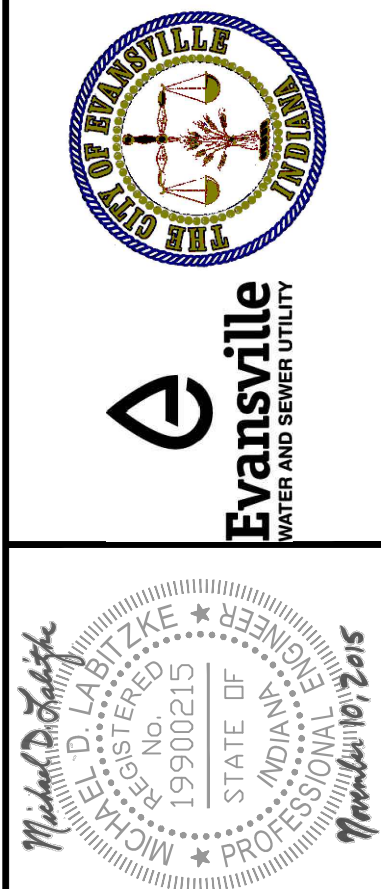
**WW-25 - INSIDE DROP STAINLESS STEEL
ADJUSTABLE CLAMPING BRACKET**

SCALE: N.T.S.

REVISIONS		APPROVED
DATE	DESCRIPTION	

DRAWING NO:
—

SHEET NO:
4
4 of 4



EVANSVILLE WATER AND SEWER UTILITY
1931 Allens Lane - Evansville, IN 47720 (812) 421-2126

STANDARD SANITARY SEWER DETAILS

APPROVED:	11/10/15	ADOPTED:	11/10/15
APPROVED BY:	M.D.L.	SCALE:	N.T.S.
FIGURES:	WW-25		
APPROVED:		DATE:	